

Concealed flexi type unit with low ESP Technical Data FWE-DATN5V3-L / FWE-DATN5V3-R / FWE-DATN5V3-S / FWE-DATN5V3-T

FWE03DATN5V3-L
FWE04DATN5V3-L
FWE05DATN5V3-L
FWE06DATN5V3-L
FWE07DATN5V3-L
FWE08DATN5V3-L
FWE10DATN5V3-L
FWE11DATN5V3-L
FWE03DATN5V3-R
FWE04DATN5V3-R
FWE05DATN5V3-R
FWE06DATN5V3-R
FWE07DATN5V3-R
FWE08DATN5V3-R
FWE10DATN5V3-R
FWE11DATN5V3-R
FWE03DATN5V3-S
FWE04DATN5V3-S
FWE05DATN5V3-S
FWE06DATN5V3-S
FWE07DATN5V3-S
FWE08DATN5V3-S
FWE10DATN5V3-S
FWE11DATN5V3-S
FWE03DATN5V3-T
FWE04DATN5V3-T
FWE05DATN5V3-T
FWE06DATN5V3-T
FWE07DATN5V3-T
FWE08DATN5V3-T
FWE10DATN5V3-T
FWE11DATN5V3-T



TABLE OF CONTENTS

FWE-DATN5V3-L / FWE-DATN5V3-R / FWE-DATN5V3-S / FWE-DATN5V3-T

1	Features	4
	FWE-DATN5V3-L	4
	FWE-DATN5V3-R	5
	FWE-DATN5V3-S	6
	FWE-DATN5V3-T	7
2	Specifications	8
3	Nomenclature	28
4	Electrical data	29
5	Options	30
6	Capacity tables	31
	Cooling Capacity Tables	31
	Heating Capacity Tables	34
7	Dimensional drawings	35
8	Wiring diagrams	36
	Wiring Diagrams - Single Phase	36
9	Sound data	37
	Sound Power Spectrum	37
10	Fan characteristics	45

1 Features

1 - 1 FWE-DATN5V3-L

AC fan motor unit for horizontal or vertical concealed mounting

1

- › Opposite water and electric connection: Left water connection and right electric connection
- › Low unit casing height of 200mm
- › Sirocco Fan leading to low noise operation
- › Open control
- › Multiple factory mounted valve combinations
- › Increased flexibility of capacity setting in the field
- › The air filter can easily be removed for cleaning



1 Features

1 - 2 FWE-DATN5V3-R

AC fan motor unit for horizontal or vertical concealed mounting

- › Opposite water and electric connection: Right water connection and left electric connection
- › Low unit casing height of 200mm
- › Sirocco Fan leading to low noise operation
- › Open control
- › Multiple factory mounted valve combinations
- › Increased flexibility of capacity setting in the field
- › The air filter can easily be removed for cleaning

1



1 Features

1 - 3 FWE-DATN5V3-S

AC fan motor unit for horizontal or vertical concealed mounting

1

- › Same side water and electric connection: Left water connection and left electric connection
- › Low unit casing height of 200mm
- › Sirocco Fan leading to low noise operation
- › Open control
- › Multiple factory mounted valve combinations
- › Increased flexibility of capacity setting in the field
- › The air filter can easily be removed for cleaning



1 Features

1 - 4 FWE-DATN5V3-T

AC fan motor unit for horizontal or vertical concealed mounting

- › Same side water and electric connection: Right water connection and right electric connection
- › Low unit casing height of 200mm
- › Sirocco Fan leading to low noise operation
- › Open control
- › Multiple factory mounted valve combinations
- › Increased flexibility of capacity setting in the field
- › The air filter can easily be removed for cleaning

1



2 Specifications

Technical specifications				FWE03DATN5V3-L	FWE04DATN5V3-L	FWE05DATN5V3-L	FWE06DATN5V3-L		
Cooling capacity (standard conditions)	Latent capacity	High	kW	0.320	0.350	0.440	0.500		
		Super high	kW	0.350	0.370	0.470	0.560		
	Sensible capacity	2-pipe	Fan speed 1	kW	1.00	0.99	1.09	1.02	
			Fan speed 2	kW	1.16	1.15	1.35	1.29	
			Fan speed 3	kW	1.31	1.34	1.64		
			Fan speed 4	kW	1.46	1.55	2.02	1.97	
			Fan speed 5	kW	1.59	1.69	2.11	2.30	
			Fan speed 6	kW		-		2.56	
		Total capacity	Low	kW	1.00	1.15	1.35	1.64	
			Medium	kW	1.31	1.34	1.64	1.97	
			High	kW	1.59	1.69	2.11	2.56	
			2-pipe	Fan speed 1	kW	1.22	1.21	1.33	1.24
				Fan speed 2	kW	1.41	1.40	1.64	1.57
				Fan speed 3	kW	1.60	1.64	2.00	
	Heating capacity (standard conditions)	Capacity	2-pipe	Fan speed 4	kW	1.78	1.90	2.46	2.40
				Fan speed 5	kW	1.94	2.06	2.58	2.80
				Fan speed 6	kW		-		3.12
				Low	kW	1.22	1.40	1.64	2.00
				Medium	kW	1.60	1.64	2.00	2.40
				High	kW	1.94	2.06	2.58	3.12
2-pipe			Fan speed 1	kW	1.34	1.60	1.68	2.06	
			Fan speed 2	kW	1.51	1.78	1.98	2.39	
			Fan speed 3	kW	1.69	1.99	2.32	2.85	
			Fan speed 4	kW	1.84	2.21	2.71	3.25	
Power input	2-pipe	Fan speed 5	kW	2.00	2.38	2.89	3.58		
		Fan speed 6	kW		-		4.00		
		Low	kW	1.34	1.78	1.98	2.85		
		Medium	kW	1.69	1.99	2.32	3.25		
		High	kW	2.00	2.38	2.89	4.00		
		Fan speed 1	kW		0.026		0.039		
Power input	2-pipe	Fan speed 2	kW	0.027	0.028	0.029	0.040		
		Fan speed 3	kW		0.029	0.032	0.043		
		Fan speed 4	kW		0.031	0.035	0.045		
		Fan speed 5	kW	0.033	0.032	0.039	0.047		
		Fan speed 6	kW		-		0.062		
		Low	kW	0.026	0.028	0.029	0.043		
Power input	2-pipe	Med.	kW		0.029	0.032	0.045		
		High	kW	0.033	0.032	0.039	0.062		
Dimensions	Unit	Height	mm	200					
		Width	mm	795		995			
		Depth	mm	610					
	Packed unit	Height	mm	205					
		Width	mm	925		1,125			
		Depth	mm	745					
Weight	Unit	kg	17.5		18.5	22.0			
	Packed unit	kg	20.0		21.0	25.0			
Casing	Colour		Metal						
	Material		Galvanised sheet metal						
Heat exchanger	Length	mm	490				690		
	Rows	Quantity	2						
	Row step	Quantity	6				4		
	Fin	Type	ML fin (Multi louver)						
	Tube material		Seamless copper						
	Tube type		ø7 Smooth tube						
	Tube thickness	mm	0.32						
Air filter	Type		Plastic Frame / PP Filter Net (G1)						
	Quantity	pc	2				3		

2 Specifications

Technical specifications			FWE03DATN5V3-L	FWE04DATN5V3-L	FWE05DATN5V3-L	FWE06DATN5V3-L	
Fan	Type		Sirocco fan				
	Quantity		2			3	
	Air flow rate	Fan speed 1	m ³ /h	235	227	243	290
		Fan speed 2	m ³ /h	280	263	304	355
		Fan speed 3	m ³ /h	326	306	374	446
		Fan speed 4	m ³ /h	365	350	453	527
		Fan speed 5	m ³ /h	407	385	488	593
		Fan speed 6	m ³ /h		-		677
	Available static pressure	Low	m ³ /h	235	263	304	446
		Medium	m ³ /h	326	306	374	527
		High	m ³ /h	407	385	488	677
	Available static pressure	Fan speed 1	Pa		27		25
		Fan speed 2	Pa	34	33		32
		Fan speed 3	Pa		41	40	41
Fan speed 4		Pa	47	48	50	48	
Fan speed 5		Pa	55	57		55	
Available static pressure	Fan speed 6	Pa		-		60	
	Low	Pa	27	33	32	41	
	Medium	Pa		41	40	48	
	High	Pa	55	57	55	60	
Fan motor	Model		YF110-10-4S3		YF110-12-4S35	YF110-15-4S22	
	Type		AC Motor				
	Index of Protection		20				
	Insulation grade		B				
	Poles		4				
Insulation material		Class 0 (NBR Foam, Melamine Foam)					
Total sound power level	Fan speed 1	dB(A)	32.0			30.0	
	Fan speed 2	dB(A)	35.0	34.0	37.0	34.0	
	Fan speed 3	dB(A)	39.0	38.0	41.0	39.0	
	Fan speed 4	dB(A)		42.0	46.0	44.0	
	Fan speed 5	dB(A)	45.0	44.0	50.0	46.0	
	Fan speed 6	dB(A)		-		50.0	
	Low	dB(A)	32.0	34.0	37.0	39.0	
	Medium	dB(A)	39.0	38.0	41.0	44.0	
High	dB(A)	45.0	44.0		50.0		
Sound pressure level	Fan speed 1	dB(A)	21.0	22.0		20.0	
	Fan speed 2	dB(A)	25.0	23.0	27.0	24.0	
	Fan speed 3	dB(A)	28.0	27.0	31.0	29.0	
	Fan speed 4	dB(A)		31.0	36.0	34.0	
	Fan speed 5	dB(A)	35.0	34.0	40.0	36.0	
	Fan speed 6	dB(A)		-		40.0	
	Low	dB(A)	21.0	23.0	27.0	29.0	
	Medium	dB(A)	28.0	27.0	31.0	34.0	
High	dB(A)	35.0	34.0		40.0		
Water flow	Cooling	Fan speed 1	l/h	210	209	228	213
		Fan speed 2	l/h	243	241	282	268
		Fan speed 3	l/h	275	282	343	345
		Fan speed 4	l/h	303	321	413	412
		Fan speed 5	l/h	334	354	443	468
		Fan speed 6	l/h		-		536
	Available static pressure	Low	l/h	210	241	282	345
		Medium	l/h	275	282	343	412
		High	l/h	334	354	443	536

2 Specifications

2

Technical specifications				FWE03DATN5V3-L	FWE04DATN5V3-L	FWE05DATN5V3-L	FWE06DATN5V3-L	
Water flow	Heating	Fan speed 1	l/h	230	275	289	366	
		Fan speed 2	l/h	260	306	341	424	
		Fan speed 3	l/h	290	343	400	505	
		Fan speed 4	l/h	316	379	467	577	
		Fan speed 5	l/h	344	409	496	636	
		Fan speed 6	l/h		-		689	
		High	l/h	344	409	496	689	
		Low	l/h	230	306	341	505	
		Medium	l/h	290	343	400	577	
	Water pressure drop	Cooling	Fan speed 1	kPa	6.05	4.00	3.00	1.00
			Fan speed 2	kPa	8.00	5.00	5.53	2.00
			Fan speed 3	kPa	9.49	6.61	8.40	3.23
			Fan speed 4	kPa	11.00	9.00	13.00	4.90
			Fan speed 5	kPa	13.18	10.09	14.35	7.00
			Fan speed 6	kPa		-		8.85
		Low	kPa	6.05	5.00	5.53	3.23	
		Medium	kPa	9.49	6.61	8.40	4.90	
		High	kPa	13.18	10.09	14.35	8.85	
		Heating	Fan speed 1	kPa	8.52		7.00	
Fan speed 2	kPa		11.00	8.33		10.38	6.00	
Fan speed 3	kPa		13.36	10.49		14.34	8.65	
Fan speed 4	kPa		16.00	13.00		20.00	11.25	
Fan speed 5	kPa		18.59	15.05		22.22	14.00	
Fan speed 6	kPa			-			16.99	
Low	kPa		8.52	8.33		10.38	8.65	
Medium	kPa	13.36	10.49		14.34	11.25		
High	kPa	18.59	15.05		22.22	16.99		
Allowed water temperature	Cooling	Min.	°C	5				
		Max.	°C	90.0				
	Heating	Min.	°C	5.00				
		Max.	°C	90.000				
Piping connections	Water	Inlet		3/4"				
		Outlet		3/4"				
	Drain	OD	mm	17.3				

Technical specifications				FWE07DATN5V3-L	FWE08DATN5V3-L	FWE10DATN5V3-L	FWE11DATN5V3-L
Cooling capacity (standard conditions)	Latent capacity	High	kW	0.590	0.660	0.880	0.940
		Super high	kW	0.610	0.710	0.940	1.000
	Sensible capacity 2-pipe	Fan speed 1	kW	1.70	1.95	2.11	2.31
		Fan speed 2	kW	1.98	2.27	2.54	2.78
		Fan speed 3	kW	2.14	2.46	2.93	3.14
		Fan speed 4	kW	2.28	2.66	3.43	3.61
		Fan speed 5	kW	2.67	3.00	4.03	4.31
		Fan speed 6	kW	2.81	3.21	4.28	4.59
		Low	kW	1.98	2.27	2.54	2.78
		Medium	kW	2.28	3.00	3.43	3.61
		High	kW	2.81	3.21	4.28	4.59
		Total capacity 2-pipe	Fan speed 1	kW	2.07	2.38	2.57
	Fan speed 2		kW	2.42	2.77	3.10	3.39
	Fan speed 3		kW	2.61	3.00	3.57	3.83
	Fan speed 4		kW	2.79	3.24	4.19	4.40
	Fan speed 5		kW	3.26	3.66	4.91	5.25
	Fan speed 6		kW	3.42	3.92	5.22	5.59
	Low		kW	2.42	2.77	3.10	3.39
	High		kW	3.42	3.92	5.22	5.59
Heating capacity (standard conditions)	Capacity 2-pipe	Fan speed 1	kW	2.74	3.20	3.37	3.60
		Fan speed 2	kW	3.15	3.56	3.89	4.17
		Fan speed 3	kW	3.35	3.74	4.30	4.55
		Fan speed 4	kW	3.60	3.96	4.96	5.17
		Fan speed 5	kW	4.09	4.39	5.55	5.88
		Fan speed 6	kW	4.37	4.64	5.98	6.35
		Low	kW	3.15	3.56	3.89	4.17
		Medium	kW	3.60	4.39	4.96	5.17
		High	kW	4.37	4.64	5.98	6.35

2 Specifications

Technical specifications			FWE07DATN5V3-L	FWE08DATN5V3-L	FWE10DATN5V3-L	FWE11DATN5V3-L	
Power input	Fan speed 1	kW	0.029		0.026	0.028	
	Fan speed 2	kW	0.037		0.036	0.039	
	Fan speed 3	kW	0.041		0.045	0.047	
	Fan speed 4	kW	0.046		0.061	0.064	
	Fan speed 5	kW	0.057		0.081	0.086	
	Fan speed 6	kW	0.067		0.104	0.110	
	Low	kW	0.037		0.036	0.039	
Power input	Med.	kW	0.046	0.057	0.061	0.064	
	High	kW	0.067		0.104	0.110	
Dimensions	Unit	Height	mm				200
		Width	mm				1,195
		Depth	mm				610
	Packed unit	Height	mm				205
		Width	mm				1,325
		Depth	mm				745
Weight	Unit	kg		25.5			
	Packed unit	kg		29.0			
Casing	Colour	Metal					
	Material	Galvanised sheet metal					
Heat exchanger	Length	mm		890			
	Rows	Quantity		2			
	Row step	Quantity		4			
	Fin	Type		ML fin (Multi louver)			
	Tube material	Seamless copper					
	Tube type	ø7 Smooth tube					
	Tube thickness	mm		0.32			
Air filter	Type	Plastic Frame / PP Filter Net (G1)					
	Quantity	pc		3			
Fan	Type	Sirocco fan					
	Quantity	4					
Air flow rate	Fan speed 1	m ³ /h		397	436	489	
		m ³ /h		481	555	619	
	Fan speed 2	m ³ /h		521	648	705	
		m ³ /h		570	798	846	
	Fan speed 3	m ³ /h		669	934	1,008	
		m ³ /h		725	1,032	1,116	
	Fan speed 4	m ³ /h		481	555	619	
		m ³ /h		570	669	798	
	Medium	m ³ /h		570	669	798	
		m ³ /h		725	1,032	1,116	
	Available static pressure	Fan speed 1	Pa		28	22	25
Pa			34	32	34		
Fan speed 2		Pa		40		41	
		Pa		46	49		
Fan speed 3		Pa		55	59	58	
		Pa		60	63	65	
Fan	Low	Pa		34	32	34	
		Pa		46	55	49	
	High	Pa		60	63	65	
Fan motor	Model	YF110-18-4S44		YF110-52-4S40	YF110-56-4S14		
	Type	AC Motor					
	Index of Protection	20					
	Insulation grade	B					
	Poles	4					
Insulation material	Class 0 (NBR Foam, Melamine Foam)						
Total sound power level	Fan speed 1	dBA		31.0	38.0	40.0	
		dBA		34.0	43.0	44.0	
	Fan speed 2	dBA		38.0	47.0		
		dBA		42.0	51.0	52.0	
	Fan speed 3	dBA		46.0	54.0	56.0	
		dBA		50.0	57.0	59.0	
	Low	dBA		34.0	43.0	44.0	
		dBA		42.0	46.0	51.0	
	Medium	dBA		50.0	57.0	59.0	
		dBA		50.0	57.0	59.0	
	Sound pressure level	Fan speed 1	dBA		21.0	27.0	29.0
dBA			24.0	33.0	34.0		
Fan speed 2		dBA		27.0	37.0		
		dBA		32.0	41.0	42.0	
Fan speed 3		dBA		36.0	44.0	46.0	
		dBA		40.0	47.0	49.0	
Low		dBA		24.0	33.0	34.0	
		dBA		32.0	41.0	42.0	
Medium		dBA		32.0	36.0	41.0	
		dBA		40.0	47.0	49.0	
High		dBA		40.0	47.0	49.0	

2 Specifications

2

Technical specifications				FWE07DATN5V3-L	FWE08DATN5V3-L	FWE10DATN5V3-L	FWE11DATN5V3-L	
Water flow	Cooling	Fan speed 1	l/h	354	409	442	483	
		Fan speed 2	l/h	415	477	534	583	
		Fan speed 3	l/h	444	509	605	650	
		Fan speed 4	l/h	479	549	720	757	
		Fan speed 5	l/h	551	630	824	881	
		Fan speed 6	l/h	589	674	897	962	
		Low	l/h	415	477	534	583	
		Medium	l/h	479	630	720	757	
		High	l/h	589	674	897	962	
		Water flow	Heating	Fan speed 1	l/h	471	550	579
Fan speed 2	l/h			542	613	669	717	
Fan speed 3	l/h			577	643	739	782	
Fan speed 4	l/h			618	680	852	888	
Fan speed 5	l/h			703	755	955	1,011	
Fan speed 6	l/h			751	797	1,029	1,092	
High	l/h			751	797	1,029	1,092	
Low	l/h			542	613	669	717	
Medium	l/h			618	755	852	888	
Water pressure drop	Cooling		Fan speed 1	kPa	4.00	9.00	8.00	9.00
			Fan speed 2	kPa	5.96	10.90	11.07	13.00
			Fan speed 3	kPa	7.00	12.00	14.00	16.00
			Fan speed 4	kPa	8.36	14.00	19.23	21.12
			Fan speed 5	kPa	12.00	16.74	26.00	29.00
			Fan speed 6	kPa	13.48	18.67	29.00	33.09
			Low	kPa	5.96	10.90	11.07	13.00
			Medium	kPa	8.36	16.74	19.23	21.12
			High	kPa	13.48	18.67	29.00	33.09
	Heating	Fan speed 1	kPa		15.00	17.00	19.00	
		Fan speed 2	kPa	19.91	18.19	21.14	23.85	
		Fan speed 3	kPa	22.00	20.00	25.00	28.00	
		Fan speed 4	kPa	25.50	22.00	32.27	34.73	
		Fan speed 5	kPa	33.00	26.10	39.00	44.00	
		Fan speed 6	kPa	36.92	28.69	45.14	50.28	
		Low	kPa	19.91	18.19	21.14	23.85	
		Medium	kPa	25.50	26.10	32.27	34.73	
		High	kPa	36.92	28.69	45.14	50.28	
Allowed water temperature	Cooling	Min.	°C	5				
		Max.	°C	90.0				
	Heating	Min.	°C	5.00				
		Max.	°C	90.000				
Piping connections	Water	Inlet		3/4"				
		Outlet		3/4"				
	Drain	OD	mm	17.3				

Standard accessories: Installation manual; Quantity: 1;

Electrical specifications				FWE03DATN5V3-L	FWE04DATN5V3-L	FWE05DATN5V3-L	FWE06DATN5V3-L
Power supply	Type			230 / 1 / 50			
	Phase			1~			
	Frequency	Hz		50			
	Voltage	V		230			

Electrical specifications				FWE07DATN5V3-L	FWE08DATN5V3-L	FWE10DATN5V3-L	FWE11DATN5V3-L
Power supply	Type			230 / 1 / 50			
	Phase			1~			
	Frequency	Hz		50			
	Voltage	V		230			

Inlet/outlet water temperature 7/12 °C; inlet air temperature 27°C DB 19°C WB |
 Heating: indoor temp. 20°CDB, 15°CWB; entering water temp. 45°C, water temperature drop 5K. |
 Heating: indoor temp. 20°CDB, 15°CWB; entering water temp. 65°C, water temperature drop 10K.

2 Specifications

Technical specifications				FWE03DATN5V3-R	FWE04DATN5V3-R	FWE05DATN5V3-R	FWE06DATN5V3-R	
Cooling capacity (standard conditions)	Latent capacity	High	kW	0.320	0.350	0.440	0.500	
		Super high	kW	0.350	0.370	0.470	0.560	
	Sensible capacity	2-pipe	Fan speed 1	kW	1.00	0.99	1.09	1.02
			Fan speed 2	kW	1.16	1.15	1.35	1.29
			Fan speed 3	kW	1.31	1.34	1.64	
			Fan speed 4	kW	1.46	1.55	2.02	1.97
			Fan speed 5	kW	1.59	1.69	2.11	2.30
			Fan speed 6	kW		-		2.56
		Total capacity	Low	kW	1.00	1.15	1.35	1.64
			Medium	kW	1.31	1.34	1.64	1.97
			High	kW	1.59	1.69	2.11	2.56
			Fan speed 1	kW	1.22	1.21	1.33	1.24
	2-pipe	Fan speed 2	kW	1.41	1.40	1.64	1.57	
		Fan speed 3	kW	1.60	1.64	2.00		
		Fan speed 4	kW	1.78	1.90	2.46	2.40	
		Fan speed 5	kW	1.94	2.06	2.58	2.80	
		Fan speed 6	kW		-		3.12	
		Low	kW	1.22	1.40	1.64	2.00	
		Medium	kW	1.60	1.64	2.00	2.40	
		High	kW	1.94	2.06	2.58	3.12	
Heating capacity (standard conditions)	Capacity	Fan speed 1	kW	1.34	1.60	1.68	2.06	
		Fan speed 2	kW	1.51	1.78	1.98	2.39	
		Fan speed 3	kW	1.69	1.99	2.32	2.85	
		Fan speed 4	kW	1.84	2.21	2.71	3.25	
		Fan speed 5	kW	2.00	2.38	2.89	3.58	
		Fan speed 6	kW		-		4.00	
		Low	kW	1.34	1.78	1.98	2.85	
		Medium	kW	1.69	1.99	2.32	3.25	
		High	kW	2.00	2.38	2.89	4.00	
		Power input	Fan speed 1	kW		0.026		0.039
Fan speed 2	kW		0.027	0.028	0.029	0.040		
Fan speed 3	kW			0.029	0.032	0.043		
Fan speed 4	kW			0.031	0.035	0.045		
Fan speed 5	kW		0.033	0.032	0.039	0.047		
Fan speed 6	kW			-		0.062		
Low	kW		0.026	0.028	0.029	0.043		
Power input	Med.	kW		0.029	0.032	0.045		
	High	kW	0.033	0.032	0.039	0.062		
Dimensions	Unit	Height	mm	200				
		Width	mm	795			995	
		Depth	mm	610				
	Packed unit	Height	mm	205				
		Width	mm	925			1,125	
		Depth	mm	745				
Weight	Unit	kg	17.5		18.5	22.0		
	Packed unit	kg	20.0		21.0	25.0		
Casing	Colour		Metal					
	Material		Galvanised sheet metal					
Heat exchanger	Length	mm	490				690	
	Rows	Quantity	2					
	Row step	Quantity	6				4	
	Fin	Type	ML fin (Multi louver)					
	Tube material		Seamless copper					
	Tube type		ø7 Smooth tube					
	Tube thickness	mm	0.32					
Air filter	Type		Plastic Frame / PP Filter Net (G1)					
	Quantity	pc	2				3	

2 Specifications

Technical specifications			FWE03DATN5V3-R	FWE04DATN5V3-R	FWE05DATN5V3-R	FWE06DATN5V3-R	
Fan	Type		Sirocco fan				
	Quantity		2			3	
	Air flow rate	Fan speed 1	m ³ /h	235	227	243	290
		Fan speed 2	m ³ /h	280	263	304	355
		Fan speed 3	m ³ /h	326	306	374	446
		Fan speed 4	m ³ /h	365	350	453	527
		Fan speed 5	m ³ /h	407	385	488	593
		Fan speed 6	m ³ /h		-		677
	Available static pressure	Low	m ³ /h	235	263	304	446
		Medium	m ³ /h	326	306	374	527
		High	m ³ /h	407	385	488	677
	Available static pressure	Fan speed 1	Pa	27		25	
		Fan speed 2	Pa	34	33	32	
		Fan speed 3	Pa	41		40	41
Fan speed 4		Pa	47	48	50	48	
Fan speed 5		Pa	55	57	55		
Fan	Available static pressure	Pa	-			60	
	Low	Pa	27	33	32	41	
	Medium	Pa	41		40	48	
Fan motor	High	Pa	55	57	55	60	
	Model		YF110-10-4S3		YF110-12-4S35	YF110-15-4S22	
Fan motor	Type		AC Motor				
	Index of Protection		20				
	Insulation grade		B				
	Poles		4				
Insulation material			Class 0 (NBR Foam, Melamine Foam)				
Total sound power level	Fan speed 1	dB(A)	32.0			30.0	
	Fan speed 2	dB(A)	35.0	34.0	37.0	34.0	
	Fan speed 3	dB(A)	39.0	38.0	41.0	39.0	
	Fan speed 4	dB(A)	42.0		46.0	44.0	
	Fan speed 5	dB(A)	45.0	44.0	50.0	46.0	
	Fan speed 6	dB(A)	-			50.0	
	Low	dB(A)	32.0	34.0	37.0	39.0	
	Medium	dB(A)	39.0	38.0	41.0	44.0	
	High	dB(A)	45.0	44.0	50.0		
Sound pressure level	Fan speed 1	dB(A)	21.0	22.0		20.0	
	Fan speed 2	dB(A)	25.0	23.0	27.0	24.0	
	Fan speed 3	dB(A)	28.0	27.0	31.0	29.0	
	Fan speed 4	dB(A)	31.0		36.0	34.0	
	Fan speed 5	dB(A)	35.0	34.0	40.0	36.0	
	Fan speed 6	dB(A)	-			40.0	
	Low	dB(A)	21.0	23.0	27.0	29.0	
	Medium	dB(A)	28.0	27.0	31.0	34.0	
	High	dB(A)	35.0	34.0	40.0		
Water flow	Cooling	Fan speed 1	l/h	210	209	228	213
		Fan speed 2	l/h	243	241	282	268
		Fan speed 3	l/h	275	282	343	345
		Fan speed 4	l/h	303	321	413	412
		Fan speed 5	l/h	334	354	443	468
		Fan speed 6	l/h		-		536
	Available static pressure	Low	l/h	210	241	282	345
		Medium	l/h	275	282	343	412
		High	l/h	334	354	443	536

2 Specifications

Technical specifications				FWE03DATN5V3-R	FWE04DATN5V3-R	FWE05DATN5V3-R	FWE06DATN5V3-R	
Water flow	Heating	Fan speed 1	l/h	230	275	289	366	
		Fan speed 2	l/h	260	306	341	424	
		Fan speed 3	l/h	290	343	400	505	
		Fan speed 4	l/h	316	379	467	577	
		Fan speed 5	l/h	344	409	496	636	
		Fan speed 6	l/h		-		689	
		High	l/h	344	409	496	689	
	Low	l/h	230	306	341	505		
	Medium	l/h	290	343	400	577		
	Water pressure drop	Cooling	Fan speed 1	kPa	6.05	4.00	3.00	1.00
			Fan speed 2	kPa	8.00	5.00	5.53	2.00
			Fan speed 3	kPa	9.49	6.61	8.40	3.23
			Fan speed 4	kPa	11.00	9.00	13.00	4.90
			Fan speed 5	kPa	13.18	10.09	14.35	7.00
Fan speed 6			kPa		-		8.85	
Low		kPa	6.05	5.00	5.53	3.23		
Medium		kPa	9.49	6.61	8.40	4.90		
High		kPa	13.18	10.09	14.35	8.85		
Heating		Fan speed 1	kPa	8.52	7.00		5.00	
		Fan speed 2	kPa	11.00	8.33	10.38	6.00	
		Fan speed 3	kPa	13.36	10.49	14.34	8.65	
		Fan speed 4	kPa	16.00	13.00	20.00	11.25	
	Fan speed 5	kPa	18.59	15.05	22.22	14.00		
	Fan speed 6	kPa		-		16.99		
	Low	kPa	8.52	8.33	10.38	8.65		
Medium	kPa	13.36	10.49	14.34	11.25			
High	kPa	18.59	15.05	22.22	16.99			
Allowed water temperature	Cooling	Min.	°C	5				
		Max.	°C	90.0				
	Heating	Min.	°C	5.00				
		Max.	°C	90.000				
Piping connections	Water	Inlet		3/4"				
		Outlet		3/4"				
	Drain	OD	mm	17.3				

Technical specifications				FWE07DATN5V3-R	FWE08DATN5V3-R	FWE10DATN5V3-R	FWE11DATN5V3-R
Cooling capacity (standard conditions)	Latent capacity	High	kW	0.590	0.660	0.880	0.940
		Super high	kW	0.610	0.710	0.940	1.000
	Sensible capacity 2-pipe	Fan speed 1	kW	1.70	1.95	2.11	2.31
		Fan speed 2	kW	1.98	2.27	2.54	2.78
		Fan speed 3	kW	2.14	2.46	2.93	3.14
		Fan speed 4	kW	2.28	2.66	3.43	3.61
		Fan speed 5	kW	2.67	3.00	4.03	4.31
		Fan speed 6	kW	2.81	3.21	4.28	4.59
		Low	kW	1.98	2.27	2.54	2.78
		Medium	kW	2.28	3.00	3.43	3.61
		High	kW	2.81	3.21	4.28	4.59
	Total capacity 2-pipe	Fan speed 1	kW	2.07	2.38	2.57	2.81
		Fan speed 2	kW	2.42	2.77	3.10	3.39
		Fan speed 3	kW	2.61	3.00	3.57	3.83
		Fan speed 4	kW	2.79	3.24	4.19	4.40
		Fan speed 5	kW	3.26	3.66	4.91	5.25
		Fan speed 6	kW	3.42	3.92	5.22	5.59
Low		kW	2.42	2.77	3.10	3.39	
High		kW	3.42	3.92	5.22	5.59	
Heating capacity (standard conditions)	Capacity 2-pipe	Fan speed 1	kW	2.74	3.20	3.37	3.60
		Fan speed 2	kW	3.15	3.56	3.89	4.17
		Fan speed 3	kW	3.35	3.74	4.30	4.55
		Fan speed 4	kW	3.60	3.96	4.96	5.17
		Fan speed 5	kW	4.09	4.39	5.55	5.88
		Fan speed 6	kW	4.37	4.64	5.98	6.35
		Low	kW	3.15	3.56	3.89	4.17
		Medium	kW	3.60	4.39	4.96	5.17
		High	kW	4.37	4.64	5.98	6.35

2 Specifications

2

Technical specifications			FWE07DATN5V3-R	FWE08DATN5V3-R	FWE10DATN5V3-R	FWE11DATN5V3-R	
Power input	Fan speed 1	kW	0.029		0.026	0.028	
	Fan speed 2	kW	0.037		0.036	0.039	
	Fan speed 3	kW	0.041		0.045	0.047	
	Fan speed 4	kW	0.046		0.061	0.064	
	Fan speed 5	kW	0.057		0.081	0.086	
	Fan speed 6	kW	0.067		0.104	0.110	
	Low	kW	0.037		0.036	0.039	
Power input	Med.	kW	0.046	0.057	0.061	0.064	
	High	kW	0.067		0.104	0.110	
Dimensions	Unit	Height	mm				200
		Width	mm				1,195
		Depth	mm				610
	Packed unit	Height	mm				205
		Width	mm				1,325
		Depth	mm				745
Weight	Unit	kg		25.5			
	Packed unit	kg		29.0			
Casing	Colour	Metal					
	Material	Galvanised sheet metal					
Heat exchanger	Length	mm		890			
	Rows	Quantity		2			
	Row step	Quantity		4			
	Fin	Type		ML fin (Multi louver)			
	Tube material	Seamless copper					
	Tube type	ø7 Smooth tube					
	Tube thickness	mm		0.32			
Air filter	Type	Plastic Frame / PP Filter Net (G1)					
	Quantity	pc		3			
Fan	Type	Sirocco fan					
	Quantity	4					
	Air flow rate	Fan speed 1	m ³ /h		397	436	489
		Fan speed 2	m ³ /h		481	555	619
		Fan speed 3	m ³ /h		521	648	705
		Fan speed 4	m ³ /h		570	798	846
		Fan speed 5	m ³ /h		669	934	1,008
		Fan speed 6	m ³ /h		725	1,032	1,116
		Low	m ³ /h		481	555	619
		Medium	m ³ /h		570	669	798
		High	m ³ /h		725	1,032	1,116
		Available static pressure	Fan speed 1	Pa		28	22
	Fan speed 2		Pa		34	32	34
	Fan speed 3		Pa		40		41
	Fan speed 4		Pa		46	49	
	Fan speed 5		Pa		55	59	58
Fan	Available static pressure	Pa		60	63	65	
	Low	Pa		34	32	34	
	Medium	Pa		46	55	49	
Fan motor	Model	YF110-18-4S44		YF110-52-4S40	YF110-56-4S14		
	Type	AC Motor					
	Index of Protection	20					
	Insulation grade	B					
	Poles	4					
Insulation material	Class 0 (NBR Foam, Melamine Foam)						
Total sound power level	Fan speed 1	dBA		31.0	38.0	40.0	
	Fan speed 2	dBA		34.0	43.0	44.0	
	Fan speed 3	dBA		38.0	47.0		
	Fan speed 4	dBA		42.0	51.0	52.0	
	Fan speed 5	dBA		46.0	54.0	56.0	
	Fan speed 6	dBA		50.0	57.0	59.0	
	Low	dBA		34.0	43.0	44.0	
	Medium	dBA		42.0	46.0	51.0	
	High	dBA		50.0	57.0	59.0	
	Sound pressure level	Fan speed 1	dBA		21.0	27.0	29.0
Fan speed 2		dBA		24.0	33.0	34.0	
Fan speed 3		dBA		27.0	37.0		
Fan speed 4		dBA		32.0	41.0	42.0	
Fan speed 5		dBA		36.0	44.0	46.0	
Fan speed 6		dBA		40.0	47.0	49.0	
Low		dBA		24.0	33.0	34.0	
Medium		dBA		32.0	36.0	41.0	
High		dBA		40.0	47.0	49.0	

2 Specifications

Technical specifications				FWE07DATN5V3-R	FWE08DATN5V3-R	FWE10DATN5V3-R	FWE11DATN5V3-R	
Water flow	Cooling	Fan speed 1	l/h	354	409	442	483	
		Fan speed 2	l/h	415	477	534	583	
		Fan speed 3	l/h	444	509	605	650	
		Fan speed 4	l/h	479	549	720	757	
		Fan speed 5	l/h	551	630	824	881	
		Fan speed 6	l/h	589	674	897	962	
		Low	l/h	415	477	534	583	
		Medium	l/h	479	630	720	757	
		High	l/h	589	674	897	962	
Water flow	Heating	Fan speed 1	l/h	471	550	579	620	
		Fan speed 2	l/h	542	613	669	717	
		Fan speed 3	l/h	577	643	739	782	
		Fan speed 4	l/h	618	680	852	888	
		Fan speed 5	l/h	703	755	955	1,011	
		Fan speed 6	l/h	751	797	1,029	1,092	
		High	l/h	751	797	1,029	1,092	
		Low	l/h	542	613	669	717	
		Medium	l/h	618	755	852	888	
	Water pressure drop	Cooling	Fan speed 1	kPa	4.00	9.00	8.00	9.00
			Fan speed 2	kPa	5.96	10.90	11.07	13.00
			Fan speed 3	kPa	7.00	12.00	14.00	16.00
			Fan speed 4	kPa	8.36	14.00	19.23	21.12
			Fan speed 5	kPa	12.00	16.74	26.00	29.00
			Fan speed 6	kPa	13.48	18.67	29.00	33.09
Low			kPa	5.96	10.90	11.07	13.00	
Medium			kPa	8.36	16.74	19.23	21.12	
High			kPa	13.48	18.67	29.00	33.09	
Heating	Fan speed 1	kPa	15.00		17.00	19.00		
	Fan speed 2	kPa	19.91	18.19	21.14	23.85		
	Fan speed 3	kPa	22.00	20.00	25.00	28.00		
	Fan speed 4	kPa	25.50	22.00	32.27	34.73		
	Fan speed 5	kPa	33.00	26.10	39.00	44.00		
	Fan speed 6	kPa	36.92	28.69	45.14	50.28		
	Low	kPa	19.91	18.19	21.14	23.85		
	Medium	kPa	25.50	26.10	32.27	34.73		
	High	kPa	36.92	28.69	45.14	50.28		
Allowed water temperature	Cooling	Min.	°C	5				
		Max.	°C	90.0				
	Heating	Min.	°C	5.00				
		Max.	°C	90.000				
Piping connections	Water	Inlet		3/4"				
		Outlet		3/4"				
	Drain	OD	mm	17.3				

Standard accessories: Installation manual; Quantity: 1;

Electrical specifications				FWE03DATN5V3-R	FWE04DATN5V3-R	FWE05DATN5V3-R	FWE06DATN5V3-R
Power supply	Type			230 / 1 / 50			
	Phase			1~			
	Frequency	Hz		50			
	Voltage	V		230			

Electrical specifications				FWE07DATN5V3-R	FWE08DATN5V3-R	FWE10DATN5V3-R	FWE11DATN5V3-R
Power supply	Type			230 / 1 / 50			
	Phase			1~			
	Frequency	Hz		50			
	Voltage	V		230			

Inlet/outlet water temperature 7/12 °C; inlet air temperature 27°C DB 19°C WB | Heating: indoor temp. 20°CDB, 15°CWB; entering water temp. 45°C, water temperature drop 5K. | Heating: indoor temp. 20°CDB, 15°CWB; entering water temp. 65°C, water temperature drop 10K.

2 Specifications

2

Technical specifications				FWE03DATN5V3-S	FWE04DATN5V3-S	FWE05DATN5V3-S	FWE06DATN5V3-S		
Cooling capacity (standard conditions)	Latent capacity 2-pipe	High	kW	0.320	0.350	0.440	0.500		
		Super high	kW	0.350	0.370	0.470	0.560		
	Sensible capacity 2-pipe	Fan speed	1	kW	1.00	0.99	1.09	1.02	
			2	kW	1.16	1.15	1.35	1.29	
			3	kW	1.31	1.34		1.64	
			4	kW	1.46	1.55	2.02	1.97	
			5	kW	1.59	1.69	2.11	2.30	
			6	kW		-		2.56	
		Total	Low	kW	1.00	1.15	1.35	1.64	
			Medium	kW	1.31	1.34	1.64	1.97	
			High	kW	1.59	1.69	2.11	2.56	
			Fan speed 1	kW	1.22	1.21	1.33	1.24	
	2-pipe	Fan speed	2	kW	1.41	1.40	1.64	1.57	
			3	kW	1.60	1.64		2.00	
		Fan speed	4	kW	1.78	1.90	2.46	2.40	
			5	kW	1.94	2.06	2.58	2.80	
			6	kW		-		3.12	
			Low	kW	1.22	1.40	1.64	2.00	
			Medium	kW	1.60	1.64	2.00	2.40	
			High	kW	1.94	2.06	2.58	3.12	
Heating capacity (standard conditions)	Capacity 2-pipe	Fan speed 1	kW	1.34	1.60	1.68	2.06		
		Fan speed 2	kW	1.51	1.78	1.98	2.39		
		Fan speed 3	kW	1.69	1.99	2.32	2.85		
		Fan speed 4	kW	1.84	2.21	2.71	3.25		
		Fan speed 5	kW	2.00	2.38	2.89	3.58		
		Fan speed 6	kW		-		4.00		
		Low	kW	1.34	1.78	1.98	2.85		
		Medium	kW	1.69	1.99	2.32	3.25		
		High	kW	2.00	2.38	2.89	4.00		
		Power input	Fan speed	1	kW		0.026		0.039
				2	kW	0.027	0.028	0.029	0.040
				3	kW		0.029	0.032	0.043
4	kW				0.031	0.035	0.045		
5	kW			0.033	0.032	0.039	0.047		
6	kW				-		0.062		
Low	kW			0.026	0.028	0.029	0.043		
Power input	Med.	kW		0.029	0.032	0.045			
	High	kW	0.033	0.032	0.039	0.062			
Dimensions	Unit	Height	mm	200					
		Width	mm	795			995		
		Depth	mm	610					
	Packed unit	Height	mm	205					
		Width	mm	925			1,125		
		Depth	mm	745					
Weight	Unit	kg	17.5		18.5	22.0			
	Packed unit	kg	20.0		21.0	25.0			
Casing	Colour		Metal						
	Material		Galvanised sheet metal						
Heat exchanger	Length	mm	490				690		
	Rows	Quantity	2						
	Row step	Quantity	6				4		
	Fin	Type	ML fin (Multi louver)						
	Tube material		Seamless copper						
	Tube type		ø7 Smooth tube						
	Tube thickness	mm	0.32						
Air filter	Type		Plastic Frame / PP Filter Net (G1)						
	Quantity	pc	2				3		

2 Specifications

Technical specifications			FWE03DATN5V3-S	FWE04DATN5V3-S	FWE05DATN5V3-S	FWE06DATN5V3-S	
Fan	Type		Sirocco fan				
	Quantity		2			3	
	Air flow rate	Fan speed 1	m ³ /h	235	227	243	290
		Fan speed 2	m ³ /h	280	263	304	355
		Fan speed 3	m ³ /h	326	306	374	446
		Fan speed 4	m ³ /h	365	350	453	527
		Fan speed 5	m ³ /h	407	385	488	593
		Fan speed 6	m ³ /h		-		677
	Available static pressure	Low	m ³ /h	235	263	304	446
		Medium	m ³ /h	326	306	374	527
		High	m ³ /h	407	385	488	677
	Available static pressure	Fan speed 1	Pa		27		25
		Fan speed 2	Pa	34	33		32
		Fan speed 3	Pa		41	40	41
Fan speed 4		Pa	47	48	50	48	
Fan speed 5		Pa	55	57		55	
Fan	Available static pressure	Pa		-		60	
	Low	Pa	27	33	32	41	
	Medium	Pa		41	40	48	
	High	Pa	55	57	55	60	
Fan motor	Model		YF110-10-4S3		YF110-12-4S35	YF110-15-4S22	
	Type		AC Motor				
	Index of Protection		20				
	Insulation grade		B				
	Poles		4				
Insulation material		Class 0 (NBR Foam, Melamine Foam)					
Total sound power level	Fan speed 1	dB(A)	32.0			30.0	
	Fan speed 2	dB(A)	35.0	34.0	37.0	34.0	
	Fan speed 3	dB(A)	39.0	38.0	41.0	39.0	
	Fan speed 4	dB(A)		42.0	46.0	44.0	
	Fan speed 5	dB(A)	45.0	44.0	50.0	46.0	
	Fan speed 6	dB(A)		-		50.0	
	Low	dB(A)	32.0	34.0	37.0	39.0	
	Medium	dB(A)	39.0	38.0	41.0	44.0	
High	dB(A)	45.0	44.0		50.0		
Sound pressure level	Fan speed 1	dB(A)	21.0	22.0		20.0	
	Fan speed 2	dB(A)	25.0	23.0	27.0	24.0	
	Fan speed 3	dB(A)	28.0	27.0	31.0	29.0	
	Fan speed 4	dB(A)		31.0	36.0	34.0	
	Fan speed 5	dB(A)	35.0	34.0	40.0	36.0	
	Fan speed 6	dB(A)		-		40.0	
	Low	dB(A)	21.0	23.0	27.0	29.0	
	Medium	dB(A)	28.0	27.0	31.0	34.0	
High	dB(A)	35.0	34.0		40.0		
Water flow	Cooling	Fan speed 1	l/h	210	209	228	213
		Fan speed 2	l/h	243	241	282	268
		Fan speed 3	l/h	275	282	343	345
		Fan speed 4	l/h	303	321	413	412
		Fan speed 5	l/h	334	354	443	468
		Fan speed 6	l/h		-		536
	Available static pressure	Low	l/h	210	241	282	345
		Medium	l/h	275	282	343	412
		High	l/h	334	354	443	536

2 Specifications

2

Technical specifications				FWE03DATN5V3-S	FWE04DATN5V3-S	FWE05DATN5V3-S	FWE06DATN5V3-S	
Water flow	Heating	Fan speed 1	l/h	230	275	289	366	
		Fan speed 2	l/h	260	306	341	424	
		Fan speed 3	l/h	290	343	400	505	
		Fan speed 4	l/h	316	379	467	577	
		Fan speed 5	l/h	344	409	496	636	
		Fan speed 6	l/h		-		689	
		High	l/h	344	409	496	689	
		Low	l/h	230	306	341	505	
		Medium	l/h	290	343	400	577	
	Water pressure drop	Cooling	Fan speed 1	kPa	6.05	4.00	3.00	1.00
			Fan speed 2	kPa	8.00	5.00	5.53	2.00
			Fan speed 3	kPa	9.49	6.61	8.40	3.23
			Fan speed 4	kPa	11.00	9.00	13.00	4.90
			Fan speed 5	kPa	13.18	10.09	14.35	7.00
			Fan speed 6	kPa		-		8.85
		Low	kPa	6.05	5.00	5.53	3.23	
		Medium	kPa	9.49	6.61	8.40	4.90	
		High	kPa	13.18	10.09	14.35	8.85	
		Heating	Fan speed 1	kPa	8.52		7.00	5.00
Fan speed 2	kPa		11.00	8.33	10.38	6.00		
Fan speed 3	kPa		13.36	10.49	14.34	8.65		
Fan speed 4	kPa		16.00	13.00	20.00	11.25		
Fan speed 5	kPa		18.59	15.05	22.22	14.00		
Fan speed 6	kPa			-		16.99		
Low	kPa		8.52	8.33	10.38	8.65		
Medium	kPa	13.36	10.49	14.34	11.25			
High	kPa	18.59	15.05	22.22	16.99			
Allowed water temperature	Cooling	Min.	°C			5		
		Max.	°C			90.0		
	Heating	Min.	°C			5.00		
		Max.	°C			90.000		
Piping connections	Water	Inlet				3/4"		
		Outlet				3/4"		
	Drain	OD	mm			17.3		

Technical specifications				FWE07DATN5V3-S	FWE08DATN5V3-S	FWE10DATN5V3-S	FWE11DATN5V3-S
Cooling capacity (standard conditions)	Latent capacity	High	kW	0.590	0.660	0.880	0.940
		Super high	kW	0.610	0.710	0.940	1.000
	Sensible capacity 2-pipe	Fan speed 1	kW	1.70	1.95	2.11	2.31
		Fan speed 2	kW	1.98	2.27	2.54	2.78
		Fan speed 3	kW	2.14	2.46	2.93	3.14
		Fan speed 4	kW	2.28	2.66	3.43	3.61
		Fan speed 5	kW	2.67	3.00	4.03	4.31
		Fan speed 6	kW	2.81	3.21	4.28	4.59
		Low	kW	1.98	2.27	2.54	2.78
		Medium	kW	2.28	3.00	3.43	3.61
		High	kW	2.81	3.21	4.28	4.59
		Total capacity 2-pipe	Fan speed 1	kW	2.07	2.38	2.57
	Fan speed 2		kW	2.42	2.77	3.10	3.39
	Fan speed 3		kW	2.61	3.00	3.57	3.83
	Fan speed 4		kW	2.79	3.24	4.19	4.40
	Fan speed 5		kW	3.26	3.66	4.91	5.25
	Fan speed 6		kW	3.42	3.92	5.22	5.59
	Low		kW	2.42	2.77	3.10	3.39
	Medium	kW	2.79	3.66	4.19	4.40	
High	kW	3.42	3.92	5.22	5.59		
Heating capacity (standard conditions)	Capacity 2-pipe	Fan speed 1	kW	2.74	3.20	3.37	3.60
		Fan speed 2	kW	3.15	3.56	3.89	4.17
		Fan speed 3	kW	3.35	3.74	4.30	4.55
		Fan speed 4	kW	3.60	3.96	4.96	5.17
		Fan speed 5	kW	4.09	4.39	5.55	5.88
		Fan speed 6	kW	4.37	4.64	5.98	6.35
		Low	kW	3.15	3.56	3.89	4.17
		Medium	kW	3.60	4.39	4.96	5.17
		High	kW	4.37	4.64	5.98	6.35

2 Specifications

Technical specifications			FWE07DATN5V3-S	FWE08DATN5V3-S	FWE10DATN5V3-S	FWE11DATN5V3-S
Power input	Fan speed 1	kW	0.029		0.026	0.028
	Fan speed 2	kW	0.037		0.036	0.039
	Fan speed 3	kW	0.041		0.045	0.047
	Fan speed 4	kW	0.046		0.061	0.064
	Fan speed 5	kW	0.057		0.081	0.086
	Fan speed 6	kW	0.067		0.104	0.110
	Low	kW	0.037		0.036	0.039
Power input	Med.	kW	0.046	0.057	0.061	0.064
	High	kW	0.067		0.104	0.110
Dimensions	Unit	Height	200			
		Width	1,195			
		Depth	610			
	Packed unit	Height	205			
		Width	1,325			
		Depth	745			
Weight	Unit	kg	25.5			
	Packed unit	kg	29.0			
Casing	Colour		Metal			
	Material		Galvanised sheet metal			
Heat exchanger	Length	mm	890			
	Rows	Quantity	2			
	Row step	Quantity	4			
	Fin	Type	ML fin (Multi louver)			
	Tube material		Seamless copper			
	Tube type		ø7 Smooth tube			
	Tube thickness	mm	0.32			
Air filter	Type		Plastic Frame / PP Filter Net (G1)			
	Quantity	pc	3			
Fan	Type		Sirocco fan			
	Quantity		4			
Air flow rate	Fan speed 1	m ³ /h	397		436	489
		m ³ /h	481		555	619
	Fan speed 2	m ³ /h	521		648	705
		m ³ /h	570		798	846
	Fan speed 3	m ³ /h	669		934	1,008
		m ³ /h	725		1,032	1,116
	Fan speed 4	m ³ /h	481		555	619
		m ³ /h	570		648	705
	Medium	m ³ /h	570	669	798	846
		m ³ /h	725		1,032	1,116
	Available static pressure	Fan speed 1	Pa	28		22
Pa			34		32	34
Fan speed 2		Pa		40		41
		Pa	46		49	
Fan speed 3		Pa	55		59	58
		Pa	60		63	65
Available static pressure	Low	Pa	34		32	34
		Pa	46	55	49	
	High	Pa	60		63	65
Fan motor	Model		YF110-18-4S44		YF110-52-4S40	YF110-56-4S14
	Type		AC Motor			
	Index of Protection		20			
	Insulation grade		B			
	Poles		4			
	Insulation material		Class 0 (NBR Foam, Melamine Foam)			
Total sound power level	Fan speed 1	dB(A)	31.0		38.0	40.0
		dB(A)	34.0		43.0	44.0
	Fan speed 2	dB(A)	38.0		47.0	
		dB(A)	42.0		51.0	52.0
	Fan speed 3	dB(A)	46.0		54.0	56.0
		dB(A)	50.0		57.0	59.0
	Fan speed 4	dB(A)	34.0		43.0	44.0
		dB(A)	42.0	46.0	51.0	52.0
	Medium	dB(A)	50.0		57.0	59.0
		dB(A)	50.0		57.0	59.0
	Sound pressure level	Fan speed 1	dB(A)	21.0		27.0
dB(A)			24.0		33.0	34.0
Fan speed 2		dB(A)	27.0		37.0	
		dB(A)	32.0		41.0	42.0
Fan speed 3		dB(A)	36.0		44.0	46.0
		dB(A)	40.0		47.0	49.0
Fan speed 4		dB(A)	24.0		33.0	34.0
		dB(A)	32.0	36.0	41.0	42.0
Medium		dB(A)	32.0	36.0	41.0	42.0
		dB(A)	40.0		47.0	49.0

2 Specifications

2

Technical specifications				FWE07DATN5V3-S	FWE08DATN5V3-S	FWE10DATN5V3-S	FWE11DATN5V3-S	
Water flow	Cooling	Fan speed 1	l/h	354	409	442	483	
		Fan speed 2	l/h	415	477	534	583	
		Fan speed 3	l/h	444	509	605	650	
		Fan speed 4	l/h	479	549	720	757	
		Fan speed 5	l/h	551	630	824	881	
		Fan speed 6	l/h	589	674	897	962	
		Low	l/h	415	477	534	583	
		Medium	l/h	479	630	720	757	
		High	l/h	589	674	897	962	
		Water flow	Heating	Fan speed 1	l/h	471	550	579
Fan speed 2	l/h			542	613	669	717	
Fan speed 3	l/h			577	643	739	782	
Fan speed 4	l/h			618	680	852	888	
Fan speed 5	l/h			703	755	955	1,011	
Fan speed 6	l/h			751	797	1,029	1,092	
High	l/h			751	797	1,029	1,092	
Low	l/h			542	613	669	717	
Medium	l/h			618	755	852	888	
Water pressure drop	Cooling		Fan speed 1	kPa	4.00	9.00	8.00	9.00
			Fan speed 2	kPa	5.96	10.90	11.07	13.00
			Fan speed 3	kPa	7.00	12.00	14.00	16.00
			Fan speed 4	kPa	8.36	14.00	19.23	21.12
			Fan speed 5	kPa	12.00	16.74	26.00	29.00
			Fan speed 6	kPa	13.48	18.67	29.00	33.09
			Low	kPa	5.96	10.90	11.07	13.00
			Medium	kPa	8.36	16.74	19.23	21.12
			High	kPa	13.48	18.67	29.00	33.09
	Heating	Fan speed 1	kPa		15.00		17.00	19.00
		Fan speed 2	kPa	19.91	18.19	21.14	23.85	
		Fan speed 3	kPa	22.00	20.00	25.00	28.00	
		Fan speed 4	kPa	25.50	22.00	32.27	34.73	
		Fan speed 5	kPa	33.00	26.10	39.00	44.00	
		Fan speed 6	kPa	36.92	28.69	45.14	50.28	
		Low	kPa	19.91	18.19	21.14	23.85	
		Medium	kPa	25.50	26.10	32.27	34.73	
		High	kPa	36.92	28.69	45.14	50.28	
Allowed water temperature	Cooling	Min.	°C	5				
		Max.	°C	90.0				
	Heating	Min.	°C	5.00				
		Max.	°C	90.000				
Piping connections	Water	Inlet		3/4"				
		Outlet		3/4"				
	Drain	OD	mm	17.3				

Standard accessories: Installation manual; Quantity: 1;

Electrical specifications				FWE03DATN5V3-S	FWE04DATN5V3-S	FWE05DATN5V3-S	FWE06DATN5V3-S
Power supply	Type			230 / 1 / 50			
	Phase			1~			
	Frequency	Hz		50			
	Voltage	V		230			

Electrical specifications				FWE07DATN5V3-S	FWE08DATN5V3-S	FWE10DATN5V3-S	FWE11DATN5V3-S
Power supply	Type			230 / 1 / 50			
	Phase			1~			
	Frequency	Hz		50			
	Voltage	V		230			

Inlet/outlet water temperature 7/12 °C; inlet air temperature 27°C DB 19°C WB |
 Heating: indoor temp. 20°CDB, 15°CWB; entering water temp. 45°C, water temperature drop 5K. |
 Heating: indoor temp. 20°CDB, 15°CWB; entering water temp. 65°C, water temperature drop 10K.

2 Specifications

Technical specifications				FWE03DATN5V3-T	FWE04DATN5V3-T	FWE05DATN5V3-T	FWE06DATN5V3-T	
Cooling capacity (standard conditions)	Latent capacity	High	kW	0.320	0.350	0.440	0.500	
		Super high	kW	0.350	0.370	0.470	0.560	
	Sensible capacity	2-pipe	Fan speed 1	kW	1.00	0.99	1.09	1.02
			Fan speed 2	kW	1.16	1.15	1.35	1.29
	2-pipe	Fan speed 3	kW	1.31	1.34	1.64		
		Fan speed 4	kW	1.46	1.55	2.02	1.97	
		Fan speed 5	kW	1.59	1.69	2.11	2.30	
		Fan speed 6	kW		-		2.56	
		Low	kW	1.00	1.15	1.35	1.64	
		Medium	kW	1.31	1.34	1.64	1.97	
	Total capacity	2-pipe	High	kW	1.59	1.69	2.11	2.56
			Fan speed 1	kW	1.22	1.21	1.33	1.24
		Fan speed 2	kW	1.41	1.40	1.64	1.57	
		Fan speed 3	kW	1.60	1.64	2.00		
		Fan speed 4	kW	1.78	1.90	2.46	2.40	
		Fan speed 5	kW	1.94	2.06	2.58	2.80	
		Fan speed 6	kW		-		3.12	
		Low	kW	1.22	1.40	1.64	2.00	
		Medium	kW	1.60	1.64	2.00	2.40	
		High	kW	1.94	2.06	2.58	3.12	
Heating capacity (standard conditions)	Capacity	2-pipe	Fan speed 1	kW	1.34	1.60	1.68	2.06
			Fan speed 2	kW	1.51	1.78	1.98	2.39
	Fan speed 3	kW	1.69	1.99	2.32	2.85		
	Fan speed 4	kW	1.84	2.21	2.71	3.25		
	Fan speed 5	kW	2.00	2.38	2.89	3.58		
	Fan speed 6	kW		-		4.00		
	Low	kW	1.34	1.78	1.98	2.85		
	Medium	kW	1.69	1.99	2.32	3.25		
	High	kW	2.00	2.38	2.89	4.00		
	Power input	Fan speed 1	kW		0.026		0.039	
Fan speed 2		kW	0.027	0.028	0.029	0.040		
Fan speed 3		kW		0.029	0.032	0.043		
Fan speed 4		kW		0.031	0.035	0.045		
Fan speed 5		kW	0.033	0.032	0.039	0.047		
Fan speed 6		kW		-		0.062		
Low		kW	0.026	0.028	0.029	0.043		
Power input	Med.	kW		0.029	0.032	0.045		
	High	kW	0.033	0.032	0.039	0.062		
Dimensions	Unit	Height	mm	200				
		Width	mm	795		995		
		Depth	mm	610				
	Packed unit	Height	mm	205				
		Width	mm	925		1,125		
		Depth	mm	745				
Weight	Unit	kg	17.5		18.5	22.0		
	Packed unit	kg	20.0		21.0	25.0		
Casing	Colour		Metal					
	Material		Galvanised sheet metal					
Heat exchanger	Length	mm	490				690	
	Rows	Quantity	2					
	Row step	Quantity	6				4	
	Fin	Type	ML fin (Multi louver)					
	Tube material		Seamless copper					
	Tube type		ø7 Smooth tube					
	Tube thickness	mm	0.32					
Air filter	Type		Plastic Frame / PP Filter Net (G1)					
	Quantity	pc	2				3	

2 Specifications

Technical specifications			FWE03DATN5V3-T	FWE04DATN5V3-T	FWE05DATN5V3-T	FWE06DATN5V3-T	
Fan	Type		Sirocco fan				
	Quantity		2			3	
	Air flow rate	Fan speed 1	m ³ /h	235	227	243	290
		Fan speed 2	m ³ /h	280	263	304	355
		Fan speed 3	m ³ /h	326	306	374	446
		Fan speed 4	m ³ /h	365	350	453	527
		Fan speed 5	m ³ /h	407	385	488	593
		Fan speed 6	m ³ /h		-		677
	Available static pressure	Low	m ³ /h	235	263	304	446
		Medium	m ³ /h	326	306	374	527
		High	m ³ /h	407	385	488	677
		Fan speed 1	Pa		27		25
	Fan static pressure	Fan speed 2	Pa	34	33		32
		Fan speed 3	Pa		41	40	41
		Fan speed 4	Pa	47	48	50	48
Fan speed 5		Pa	55	57		55	
Fan speed 6		Pa		-		60	
Fan static pressure	Low	Pa	27	33	32	41	
	Medium	Pa		41	40	48	
	High	Pa	55	57	55	60	
Fan motor	Model		YF110-10-4S3		YF110-12-4S35	YF110-15-4S22	
	Type		AC Motor				
	Index of Protection		20				
	Insulation grade		B				
	Poles		4				
Insulation material			Class 0 (NBR Foam, Melamine Foam)				
Total sound power level	Fan speed 1	dB(A)	32.0			30.0	
	Fan speed 2	dB(A)	35.0	34.0	37.0	34.0	
	Fan speed 3	dB(A)	39.0	38.0	41.0	39.0	
	Fan speed 4	dB(A)		42.0	46.0	44.0	
	Fan speed 5	dB(A)	45.0	44.0	50.0	46.0	
	Fan speed 6	dB(A)		-		50.0	
	Low	dB(A)	32.0	34.0	37.0	39.0	
	Medium	dB(A)	39.0	38.0	41.0	44.0	
	High	dB(A)	45.0	44.0		50.0	
Sound pressure level	Fan speed 1	dB(A)	21.0	22.0		20.0	
	Fan speed 2	dB(A)	25.0	23.0	27.0	24.0	
	Fan speed 3	dB(A)	28.0	27.0	31.0	29.0	
	Fan speed 4	dB(A)		31.0	36.0	34.0	
	Fan speed 5	dB(A)	35.0	34.0	40.0	36.0	
	Fan speed 6	dB(A)		-		40.0	
	Low	dB(A)	21.0	23.0	27.0	29.0	
	Medium	dB(A)	28.0	27.0	31.0	34.0	
	High	dB(A)	35.0	34.0		40.0	
	Water flow	Cooling	Fan speed 1	l/h	210	209	228
Fan speed 2			l/h	243	241	282	268
Fan speed 3			l/h	275	282	343	345
Fan speed 4			l/h	303	321	413	412
Fan speed 5			l/h	334	354	443	468
Fan speed 6			l/h		-		536
Available static pressure		Low	l/h	210	241	282	345
		Medium	l/h	275	282	343	412
		High	l/h	334	354	443	536

2 Specifications

Technical specifications				FWE03DATN5V3-T	FWE04DATN5V3-T	FWE05DATN5V3-T	FWE06DATN5V3-T	
Water flow	Heating	Fan speed 1	l/h	230	275	289	366	
		Fan speed 2	l/h	260	306	341	424	
		Fan speed 3	l/h	290	343	400	505	
		Fan speed 4	l/h	316	379	467	577	
		Fan speed 5	l/h	344	409	496	636	
		Fan speed 6	l/h		-		689	
		High	l/h	344	409	496	689	
	Low	l/h	230	306	341	505		
	Medium	l/h	290	343	400	577		
	Water pressure drop	Cooling	Fan speed 1	kPa	6.05	4.00	3.00	1.00
			Fan speed 2	kPa	8.00	5.00	5.53	2.00
			Fan speed 3	kPa	9.49	6.61	8.40	3.23
			Fan speed 4	kPa	11.00	9.00	13.00	4.90
			Fan speed 5	kPa	13.18	10.09	14.35	7.00
Fan speed 6			kPa		-		8.85	
Low		kPa	6.05	5.00	5.53	3.23		
Medium		kPa	9.49	6.61	8.40	4.90		
High		kPa	13.18	10.09	14.35	8.85		
Heating		Fan speed 1	kPa	8.52		7.00	5.00	
		Fan speed 2	kPa	11.00	8.33	10.38	6.00	
		Fan speed 3	kPa	13.36	10.49	14.34	8.65	
		Fan speed 4	kPa	16.00	13.00	20.00	11.25	
	Fan speed 5	kPa	18.59	15.05	22.22	14.00		
	Fan speed 6	kPa		-		16.99		
	Low	kPa	8.52	8.33	10.38	8.65		
Medium	kPa	13.36	10.49	14.34	11.25			
High	kPa	18.59	15.05	22.22	16.99			
Allowed water temperature	Cooling	Min.	°C	5				
		Max.	°C	90.0				
	Heating	Min.	°C	5.00				
		Max.	°C	90.000				
Piping connections	Water	Inlet		3/4"				
		Outlet		3/4"				
	Drain	OD	mm	17.3				

Technical specifications				FWE07DATN5V3-T	FWE08DATN5V3-T	FWE10DATN5V3-T	FWE11DATN5V3-T
Cooling capacity (standard conditions)	Latent capacity	High	kW	0.590	0.660	0.880	0.940
		Super high	kW	0.610	0.710	0.940	1.000
	Sensible capacity 2-pipe	Fan speed 1	kW	1.70	1.95	2.11	2.31
		Fan speed 2	kW	1.98	2.27	2.54	2.78
		Fan speed 3	kW	2.14	2.46	2.93	3.14
		Fan speed 4	kW	2.28	2.66	3.43	3.61
		Fan speed 5	kW	2.67	3.00	4.03	4.31
		Fan speed 6	kW	2.81	3.21	4.28	4.59
		Low	kW	1.98	2.27	2.54	2.78
		Medium	kW	2.28	3.00	3.43	3.61
		High	kW	2.81	3.21	4.28	4.59
		Total capacity 2-pipe	Fan speed 1	kW	2.07	2.38	2.57
	Fan speed 2		kW	2.42	2.77	3.10	3.39
	Fan speed 3		kW	2.61	3.00	3.57	3.83
	Fan speed 4		kW	2.79	3.24	4.19	4.40
	Fan speed 5		kW	3.26	3.66	4.91	5.25
Fan speed 6	kW		3.42	3.92	5.22	5.59	
Low	kW		2.42	2.77	3.10	3.39	
Medium	kW	2.79	3.66	4.19	4.40		
High	kW	3.42	3.92	5.22	5.59		
Heating capacity (standard conditions)	Capacity 2-pipe	Fan speed 1	kW	2.74	3.20	3.37	3.60
		Fan speed 2	kW	3.15	3.56	3.89	4.17
		Fan speed 3	kW	3.35	3.74	4.30	4.55
		Fan speed 4	kW	3.60	3.96	4.96	5.17
		Fan speed 5	kW	4.09	4.39	5.55	5.88
		Fan speed 6	kW	4.37	4.64	5.98	6.35
		Low	kW	3.15	3.56	3.89	4.17
		Medium	kW	3.60	4.39	4.96	5.17
		High	kW	4.37	4.64	5.98	6.35

2 Specifications

2

Technical specifications			FWE07DATN5V3-T	FWE08DATN5V3-T	FWE10DATN5V3-T	FWE11DATN5V3-T	
Power input	Fan speed 1	kW	0.029		0.026	0.028	
	Fan speed 2	kW	0.037		0.036	0.039	
	Fan speed 3	kW	0.041		0.045	0.047	
	Fan speed 4	kW	0.046		0.061	0.064	
	Fan speed 5	kW	0.057		0.081	0.086	
	Fan speed 6	kW	0.067		0.104	0.110	
	Low	kW	0.037		0.036	0.039	
Power input	Med.	kW	0.046	0.057	0.061	0.064	
	High	kW	0.067		0.104	0.110	
Dimensions	Unit	Height	200				
		Width	1,195				
		Depth	610				
	Packed unit	Height	205				
		Width	1,325				
		Depth	745				
Weight	Unit	kg	25.5				
	Packed unit	kg	29.0				
Casing	Colour		Metal				
	Material		Galvanised sheet metal				
Heat exchanger	Length	mm	890				
	Rows	Quantity	2				
	Row step	Quantity	4				
	Fin	Type	ML fin (Multi louver)				
	Tube material		Seamless copper				
	Tube type		ø7 Smooth tube				
	Tube thickness	mm	0.32				
Air filter	Type		Plastic Frame / PP Filter Net (G1)				
	Quantity	pc	3				
Fan	Type		Sirocco fan				
	Quantity		4				
	Air flow rate	Fan speed 1	m ³ /h	397		436	489
		Fan speed 2	m ³ /h	481		555	619
		Fan speed 3	m ³ /h	521		648	705
		Fan speed 4	m ³ /h	570		798	846
		Fan speed 5	m ³ /h	669		934	1,008
		Fan speed 6	m ³ /h	725		1,032	1,116
		Low	m ³ /h	481		555	619
		Medium	m ³ /h	570	669	798	846
		High	m ³ /h	725		1,032	1,116
	Available static pressure	Fan speed 1	Pa	28		22	25
		Fan speed 2	Pa	34		32	34
		Fan speed 3	Pa		40		41
		Fan speed 4	Pa	46			49
Fan speed 5		Pa	55		59	58	
Fan	Available static pressure	Pa	60		63	65	
	Low	Pa	34		32	34	
	Medium	Pa	46	55		49	
Fan motor	High	Pa	60		63	65	
	Model		YF110-18-4S44		YF110-52-4S40	YF110-56-4S14	
	Type		AC Motor				
	Index of Protection		20				
	Insulation grade		B				
	Poles		4				
Insulation material		Class 0 (NBR Foam, Melamine Foam)					
Total sound power level	Fan speed 1	dB(A)	31.0		38.0	40.0	
	Fan speed 2	dB(A)	34.0		43.0	44.0	
	Fan speed 3	dB(A)	38.0		47.0		
	Fan speed 4	dB(A)	42.0		51.0	52.0	
	Fan speed 5	dB(A)	46.0		54.0	56.0	
	Fan speed 6	dB(A)	50.0		57.0	59.0	
	Low	dB(A)	34.0		43.0	44.0	
	Medium	dB(A)	42.0	46.0	51.0	52.0	
	High	dB(A)	50.0		57.0	59.0	
	Sound pressure level	Fan speed 1	dB(A)	21.0		27.0	29.0
Fan speed 2		dB(A)	24.0		33.0	34.0	
Fan speed 3		dB(A)	27.0		37.0		
Fan speed 4		dB(A)	32.0		41.0	42.0	
Fan speed 5		dB(A)	36.0		44.0	46.0	
Fan speed 6		dB(A)	40.0		47.0	49.0	
Low		dB(A)	24.0		33.0	34.0	
Medium		dB(A)	32.0	36.0	41.0	42.0	
High		dB(A)	40.0		47.0	49.0	

2 Specifications

Technical specifications				FWE07DATN5V3-T	FWE08DATN5V3-T	FWE10DATN5V3-T	FWE11DATN5V3-T	
Water flow	Cooling	Fan speed 1	l/h	354	409	442	483	
		Fan speed 2	l/h	415	477	534	583	
		Fan speed 3	l/h	444	509	605	650	
		Fan speed 4	l/h	479	549	720	757	
		Fan speed 5	l/h	551	630	824	881	
		Fan speed 6	l/h	589	674	897	962	
		Low	l/h	415	477	534	583	
		Medium	l/h	479	630	720	757	
		High	l/h	589	674	897	962	
Water flow	Heating	Fan speed 1	l/h	471	550	579	620	
		Fan speed 2	l/h	542	613	669	717	
		Fan speed 3	l/h	577	643	739	782	
		Fan speed 4	l/h	618	680	852	888	
		Fan speed 5	l/h	703	755	955	1,011	
		Fan speed 6	l/h	751	797	1,029	1,092	
		High	l/h	751	797	1,029	1,092	
		Low	l/h	542	613	669	717	
		Medium	l/h	618	755	852	888	
	Water pressure drop	Cooling	Fan speed 1	kPa	4.00	9.00	8.00	9.00
			Fan speed 2	kPa	5.96	10.90	11.07	13.00
			Fan speed 3	kPa	7.00	12.00	14.00	16.00
			Fan speed 4	kPa	8.36	14.00	19.23	21.12
			Fan speed 5	kPa	12.00	16.74	26.00	29.00
			Fan speed 6	kPa	13.48	18.67	29.00	33.09
Low			kPa	5.96	10.90	11.07	13.00	
Medium			kPa	8.36	16.74	19.23	21.12	
High			kPa	13.48	18.67	29.00	33.09	
Heating	Fan speed 1	kPa	15.00	17.00	19.00			
	Fan speed 2	kPa	19.91	18.19	21.14	23.85		
	Fan speed 3	kPa	22.00	20.00	25.00	28.00		
	Fan speed 4	kPa	25.50	22.00	32.27	34.73		
	Fan speed 5	kPa	33.00	26.10	39.00	44.00		
	Fan speed 6	kPa	36.92	28.69	45.14	50.28		
	Low	kPa	19.91	18.19	21.14	23.85		
	Medium	kPa	25.50	26.10	32.27	34.73		
	High	kPa	36.92	28.69	45.14	50.28		
Allowed water temperature	Cooling	Min.	°C	5				
		Max.	°C	90.0				
	Heating	Min.	°C	5.00				
		Max.	°C	90.000				
Piping connections	Water	Inlet		3/4"				
		Outlet		3/4"				
	Drain	OD	mm	17.3				

Standard accessories: Installation manual; Quantity: 1;

Electrical specifications				FWE03DATN5V3-T	FWE04DATN5V3-T	FWE05DATN5V3-T	FWE06DATN5V3-T
Power supply	Type			230 / 1 / 50			
	Phase			1~			
	Frequency	Hz		50			
	Voltage	V		230			

Electrical specifications				FWE07DATN5V3-T	FWE08DATN5V3-T	FWE10DATN5V3-T	FWE11DATN5V3-T
Power supply	Type			230 / 1 / 50			
	Phase			1~			
	Frequency	Hz		50			
	Voltage	V		230			

Inlet/outlet water temperature 7/12 °C; inlet air temperature 27°C DB 19°C WB |
 Heating: indoor temp. 20°CDB, 15°CWB; entering water temp. 45°C, water temperature drop 5K. |
 Heating: indoor temp. 20°CDB, 15°CWB; entering water temp. 65°C, water temperature drop 10K.

3 Nomenclature

3 - 1 Nomenclature

3

FWE03-11DAFN5V3(L-R-S-T)

FWE03-11DATN5V3(L-R-S-T)

DIGIT	CLASSIFICATION	CODE	DESCRIPTION	FW	E	03	D	A	F	N	5	V3	-	L
1-2	TYPE OF UNIT	FW	Water Fan Coil Unit	---	---	---	---	---	---	---	---	---	---	---
3	SUBCLASS	E	Flexi LSP	---	---	---	---	---	---	---	---	---	---	---
4-5	SPECIFICATION INDEX	03	Capacity Class, (01=0.5 kW / EU)	---	---	---	---	---	---	---	---	---	---	---
6	MODEL CHANGE INDICATION *	D	Major Model Change	---	---	---	---	---	---	---	---	---	---	---
7		A	Minor Model Change	---	---	---	---	---	---	---	---	---	---	---
8	COIL TYPE	T	Two Pipe	---	---	---	---	---	---	---	---	---	---	---
		F	Four pipe	---	---	---	---	---	---	---	---	---	---	---
9	VALVE	N	Without valve	---	---	---	---	---	---	---	---	---	---	---
		V	3 way on of 230 V valve	---	---	---	---	---	---	---	---	---	---	---
		D	3 way simplified on-off 230 V valve	---	---	---	---	---	---	---	---	---	---	---
		W	3 way on-off 24VAC valve	---	---	---	---	---	---	---	---	---	---	---
		P	3 proportional valve	---	---	---	---	---	---	---	---	---	---	---
		T	2 way on-off 230 V valve	---	---	---	---	---	---	---	---	---	---	---
		U	2 way on-off 24VAC valve	---	---	---	---	---	---	---	---	---	---	---
		O	2 way proportional valve	---	---	---	---	---	---	---	---	---	---	---
10	FACTORY	5	DTAS (Turkey)	---	---	---	---	---	---	---	---	---	---	---
11-12	POWER SUPPLY	V3	Single Phase 50 Hz / 230 V	---	---	---	---	---	---	---	---	---	---	---
13	OPTION (FACTORY MOUNTED)	-	No Option	---	---	---	---	---	---	---	---	---	---	---
		F	IP44 Fan Motor	---	---	---	---	---	---	---	---	---	---	---
		G	Electric Heater + IP44 Fan Motor	---	---	---	---	---	---	---	---	---	---	---
		H	G2 Filter	---	---	---	---	---	---	---	---	---	---	---
14	CONNECTION SIDE	S	Leftside water - Left side electric connection	---	---	---	---	---	---	---	---	---	---	---
		L	Left side water - Right side electric connection	---	---	---	---	---	---	---	---	---	---	---
		T	Right side water - Right side electric connection	---	---	---	---	---	---	---	---	---	---	---
		R	Right side water - Light side electric connection	---	---	---	---	---	---	---	---	---	---	---

NOTES

1. For sixth classification (*) means major/minor design change progress with each design change (A,B,C,D,...)
2. This nomenclature is created only for FWE-D

3D124527D

4 Electrical data

4 - 1 Electrical Data

FWE-DAFN5V3(L-R-S-T)

FWE-DATN5V3(L-R-S-T)

UNITS		POWER SUPPLY					INPUT(W)
MODEL	Hz	VOLTAGE RANGE (V)	VOLTAGE LIMITS(V)	MCA	MFA	FLA	FAN ONLY
FWE03DAFN5V3-L/R/S/T	50	230	MAX. 253 MIN. 207	0,16	16	0,13	31
FWE03DATN5V3-L/R/S/T	50	230	MAX. 253 MIN. 207	0,16	16	0,13	
FWE04DAFN5V3-L/R/S/T	50	230	MAX. 253 MIN. 207	0,16	16	0,13	32
FWE04DATN5V3-L/R/S/T	50	230	MAX. 253 MIN. 207	0,16	16	0,13	
FWE05DAFN5V3-L/R/S/T	50	230	MAX. 253 MIN. 207	0,19	16	0,13	39
FWE05DATN5V3-L/R/S/T	50	230	MAX. 253 MIN. 207	0,19	16	0,13	
FWE06DAFN5V3-L/R/S/T	50	230	MAX. 253 MIN. 207	0,33	16	0,13	62
FWE06DATN5V3-L/R/S/T	50	230	MAX. 253 MIN. 207	0,33	16	0,13	
FWE07DAFN5V3-L/R/S/T	50	230	MAX. 253 MIN. 207	0,35	16	0,13	65
FWE07DATN5V3-L/R/S/T	50	230	MAX. 253 MIN. 207	0,35	16	0,13	
FWE08DAFN5V3-L/R/S/T	50	230	MAX. 253 MIN. 207	0,44	16	0,13	67
FWE08DATN5V3-L/R/S/T	50	230	MAX. 253 MIN. 207	0,44	16	0,13	
FWE10DAFN5V3-L/R/S/T	50	230	MAX. 253 MIN. 207	0,54	16	0,13	104
FWE10DATN5V3-L/R/S/T	50	230	MAX. 253 MIN. 207	0,54	16	0,13	
FWE11DAFN5V3-L/R/S/T	50	230	MAX. 253 MIN. 207	0,58	16	0,13	110
FWE11DATN5V3-L/R/S/T	50	230	MAX. 253 MIN. 207	0,58	16	0,13	

Symbols:

MCA : Min. Circuit Amps (A)
 MFA : Max. Fuse Amps (See note 5)
 kW : Fan Motor Rated Output (kW)
 FLA : Full Load Amps (A)
 ESP : External Static Pressure

Notes:

- Voltage limits:
Units are suitable for use on electrical systems where voltage supplied to unit terminals is not below/above listed range limits.
- Max. allowable voltage unbalance between phases 2%.
- MCA = 1,25 x FLA;
(Next lower standard fuse rating min. 16A)
- Select wire size based on the MCA.
- Input power measured from rated conditions which has 230 V.

MFA <= 4 x FLA;

3D123458A

5 Options

5 - 1 Options

5

FWE-DAFN5V3(L-R-S-T) FWE-DATN5V3(L-R-S-T)

Item	Option Kit Name	Applicable Models	Description	Factory Mounted	Option Kit
2-way valves -ON/OFF	E2V2VN01V3WA	2 Pipe	Power supply: 1Ph, 230v, 50-60Hz, NC (Normally closed), kvs: 2,8m ³ /h, max. operation pressure: 16bar	Yes*	Yes
	E2V4VN01V3WA	4 Pipe			
3-way valves-ON/OFF	E3V2VN02V3WA	2 Pipe			
	E3V4VN02V3WA	4 Pipe			
Proportional valve (3-ways with 4 ports), DC 24V	E4V2PN04V3DA	2 Pipe / 4 Pipe	kvs: 0,4 m ³ /h	Power supply: 24v AC (+10 to -15%), 50/60 Hz, Control Input: 0-10v	Yes
	E4V2PN06V3DA		kvs: 0,63 m ³ /h		
	E4V2PN10V3DA		kvs: 1,0 m ³ /h		
	E4V4PN04V3DA		kvs: 0,4 m ³ /h		
	E4V4PN06V3DA		kvs: 0,63 m ³ /h		
	E4V4PN10V3DA		kvs: 1,0 m ³ /h		
Remote Controller	FWECA1A	2 Pipe / 4 Pipe	<ul style="list-style-type: none"> Control of on-off valves for two or four pipes systems Control of auxiliary heating element Cooling/heating switching in the following modes: local or remote manual (centralised), automatic (depending on water temperature (optional) or air temperature) Possibility, by means of clean contacts, of remote centralised cooling/heating switching and external activation Temperature sensor kit (accessory FWTSKAA***) Economy function (setpoint correction by 2.5°C and forcing of the fan to run at minimum available speed) 	No	Yes
	FWECA2A		Same as FWECA1A with following additional functions: 1) Humidity management: - display of relative humidity - dehumidification function (cooling mode) Manual activation 2) serial communication interface (RS485 bus): - possibility to set up a masterslave system up to 247 slave units, in which one of the controls plays the role of master and manages all the other slave units (modbus protocol).		
	FWECA3A		Same as FWECA2A with following additional functions: 1) Back light 2) Proportional valve control (two voltage outputs for the proportional valves) 3) Voltage contact 0-10V 4) Time clock and weekly schedule (on / off or setpoint air) 5) Integration in BMS (already included in the FWECA2A version) 6) Two digital outputs (voltage free) to manage electric heaters with the weekly schedule		
Remote Controller (Control panel)**	FWECSAC		<ul style="list-style-type: none"> Management of AC 3-speeds fan motor (on/off and automatic speed change) Management of AC 4-speeds fan motor (on/off and automatic speed change) Management of BLDC fan motor, on/off valve, proportional heater, electrical heater, air relative humidity control Cooling / heating mode switching based on air / water temp. Clean contact for remote activation Weekly timer programmed operation mode Configurable digital outputs Master & slave system on serial RS485 Master & slave system on conveyed waves (CW) 		Yes
Remote Controller (Power control board-PCB)**	FWECSAP				
Remote Controller (Mounting plate)**	FWECSAD				
Additional Drain Pan	ESFD01D6		It is an additional drain pan (external) that collects the condensation from the valves. (Not included in valve kits).		Yes
Vertical Installation Kit (Floor) front suction	ESFH01D5		Unit may not be mounted vertically without a vertical kit. Refer the outside drawings for selection of the appropriate kit.		
Vertical Installation Kit (Wall Mounted)	ESFH02D5				
Vertical Installation Leg (Floor) bottom suction	ESFH03D5				

* In case of option request as factory mounted, refer to FWE-D nomenclature for correct model name (3D124527).
 ** In case of FWECSAC remote control request; PCB, mounting plate and control panel are required / ordered together.
 *** To display on the controller the environment humidity.

2D136176

6 Capacity tables

6 - 1 Cooling Capacity Tables

FWE-DATN5V3-(L-R-S-T)																	
COOLING 2 PIPE @ 0 ESP																	
Air Temperature		DB:25°C - WB:18°C - RH %51															
Water Temperature (Entering °C - Leaving °C)		ΔT=5								ΔT=6							
		7-12				10-15				7-13				10-16			
Model / Fan Speed		Pc	Sc	Wf	Dp	Pc	Sc	Wf	Dp	Pc	Sc	Wf	Dp	Pc	Sc	Wf	Dp
		kW	kW	l/h	kPa	kW	kW	l/h	kPa	kW	kW	l/h	kPa	kW	kW	l/h	kPa
FWE03DAT N5V3-L/R/S/T	1 (L)	1.00	0.90	173	4.40	0.73	0.73	126	2.70	1.07	0.95	153	3.70	0.77	0.77	110	2.20
	2	1.16	1.05	200	5.60	0.85	0.85	146	3.40	1.23	1.10	177	4.60	0.89	0.89	127	2.80
	3 (M)	1.32	1.19	227	6.90	0.96	0.96	166	4.10	1.40	1.25	201	5.60	1.01	1.01	145	3.40
	4	1.45	1.31	250	8.10	1.06	1.06	183	4.80	1.54	1.37	221	6.60	1.11	1.11	160	3.95
	5 (H)	1.60	1.44	276	9.50	1.17	1.17	201	5.60	1.70	1.51	244	7.60	1.23	1.23	176	4.59
FWE04DAT N5V3-L/R/S/T	1	1.00	0.90	172	2.70	0.73	0.73	125	1.50	1.06	0.94	152	2.20	0.76	0.76	109	1.20
	2 (L)	1.16	1.04	199	3.50	0.84	0.84	145	2.00	1.23	1.09	176	2.80	0.88	0.88	127	1.60
	3 (M)	1.35	1.21	232	4.60	0.98	0.98	169	2.60	1.43	1.27	205	3.70	1.03	1.03	148	2.10
	4	1.54	1.39	265	5.90	1.12	1.12	194	3.30	1.64	1.46	235	4.70	1.18	1.18	169	2.60
	5 (H)	1.70	1.53	292	7.10	1.24	1.24	213	4.00	1.80	1.60	258	5.60	1.30	1.30	187	3.10
FWE05DAT N5V3-L/R/S/T	1	1.09	0.98	188	2.30	0.79	0.79	137	1.10	1.16	1.03	166	1.70	0.84	0.84	120	0.80
	2 (L)	1.35	1.22	233	3.60	0.98	0.98	170	1.80	1.44	1.28	206	2.80	1.03	1.03	148	1.30
	3 (M)	1.65	1.48	283	5.60	1.20	1.20	207	2.80	1.75	1.56	251	4.30	1.26	1.26	181	2.10
	4	1.98	1.78	341	8.30	1.45	1.45	249	4.20	2.10	1.87	302	6.40	1.52	1.52	218	3.10
	5 (H)	2.13	1.92	366	9.60	1.55	1.55	267	4.90	2.26	2.05	324	7.40	1.63	1.63	234	3.70
FWE06DAT N5V3-L/R/S/T	1	1.02	0.91	175	0.50	0.74	0.74	127	0.10	1.08	0.96	155	0.30	0.77	0.77	111	0.10
	2	1.28	1.15	221	1.00	0.93	0.93	160	0.40	1.36	1.21	195	0.70	0.98	0.98	140	0.20
	3 (L)	1.65	1.49	284	2.00	1.20	1.20	207	0.90	1.75	1.56	252	1.50	1.26	1.26	181	0.60
	4 (M)	1.98	1.78	340	3.10	1.44	1.44	248	1.40	2.10	1.87	301	2.30	1.51	1.51	217	1.00
	5	2.25	2.02	387	4.20	1.64	1.64	282	2.00	2.38	2.12	342	3.10	1.72	1.72	247	1.40
	6 (H)	2.57	2.32	443	5.70	1.87	1.87	322	2.70	2.73	2.43	392	4.30	1.97	1.97	282	2.00
FWE07DAT N5V3-L/R/S/T	1	1.70	1.53	293	2.40	1.24	1.24	213	0.90	1.80	1.61	259	1.70	1.30	1.30	187	0.60
	2 (L)	1.99	1.79	343	3.60	1.45	1.45	250	1.50	2.11	1.88	303	2.60	1.53	1.53	219	1.00
	3	2.13	1.92	367	4.30	1.55	1.55	267	1.80	2.26	2.01	324	3.10	1.63	1.63	234	1.20
	4 (M)	2.30	2.07	396	5.20	1.68	1.68	289	2.30	2.44	2.17	350	3.80	1.76	1.76	253	1.60
	5	2.65	2.38	455	7.40	1.93	1.93	332	3.40	2.81	2.50	403	5.50	2.03	2.03	291	2.30
	6 (H)	2.83	2.54	486	8.60	2.06	2.06	354	4.00	3.00	2.67	430	6.40	2.16	2.16	310	2.80
FWE08DAT N5V3-L/R/S/T	1	1.96	1.77	338	6.50	1.43	1.43	247	4.20	2.08	1.85	299	5.50	1.51	1.51	216	3.50
	2 (L)	2.29	2.06	394	8.20	1.67	1.67	288	5.20	2.43	2.16	348	6.80	1.76	1.76	252	4.30
	3	2.45	2.20	421	9.00	1.79	1.79	307	5.70	2.60	2.31	372	7.50	1.88	1.88	269	4.70
	4	2.64	2.37	454	10.10	1.92	1.92	331	6.30	2.80	2.49	401	8.40	2.02	2.02	290	5.30
	5 (M)	3.02	2.72	520	12.40	2.21	2.21	380	7.70	3.21	2.86	460	10.30	2.32	2.32	332	6.40
	6 (H)	3.24	2.91	557	13.80	2.36	2.36	406	8.50	3.44	3.06	493	11.40	2.48	2.48	356	7.00
FWE10DAT N5V3-L/R/S/T	1	2.12	1.91	365	5.60	1.55	1.55	267	3.20	2.25	2.00	323	4.50	1.63	1.63	234	2.60
	2 (L)	2.56	2.31	441	7.80	1.87	1.87	366	4.50	2.72	2.42	390	6.30	1.97	1.97	282	3.60
	3	2.91	2.62	500	9.80	2.12	2.12	497	5.60	3.09	2.75	442	7.90	2.23	2.23	320	4.40
	4 (M)	3.46	3.12	596	13.50	2.53	2.53	603	7.60	3.67	3.27	527	10.80	2.65	2.65	381	6.00
	5	3.96	3.56	681	17.30	2.89	2.89	705	9.70	4.20	3.74	602	13.80	3.03	3.03	435	7.60
	6 (H)	4.31	3.88	741	20.30	3.14	3.14	768	11.30	4.57	4.07	656	16.10	3.30	3.30	473	8.90
FWE11DAT N5V3-L/R/S/T	1	2.32	2.09	400	6.60	1.70	1.70	292	3.80	2.46	2.19	353	5.30	1.78	1.78	256	3.00
	2 (L)	2.80	2.52	483	9.20	2.05	2.05	353	5.30	2.98	2.65	427	7.40	2.15	2.15	309	4.20
	3	3.12	2.81	538	11.20	2.28	2.28	393	6.40	3.32	2.95	475	9.00	2.40	2.40	344	5.00
	4 (M)	3.64	3.28	626	14.80	2.66	2.66	457	8.30	3.86	3.44	554	11.80	2.79	2.79	400	6.60
	5	4.23	3.81	728	19.60	3.09	3.09	531	11.00	4.49	4.00	644	15.60	3.24	3.24	465	8.60
	6 (H)	4.62	4.16	795	23.10	3.37	3.37	579	12.80	4.91	4.37	703	18.40	3.54	3.54	507	10.10

SYMBOLS

- Pc = Total cooling capacity
- Sc = Sensible cooling capacity
- Wf = Water flow rate
- Dp = Water pressure drop

3D122206A

6 Capacity tables

6 - 1 Cooling Capacity Tables

6

FWE-DATN5V3-(L-R-S-T)

COOLING 2 PIPE @ 0 ESP																	
Air Temperature		DB:27°C - WB:19°C - RH %47															
Water Temperature (Entering °C - Leaving °C)		ΔT=5								ΔT=6							
		7-12				10-15				7-13				10-16			
Model / Fan Speed		Pc	Sc	Wf	Dp	Pc	Sc	Wf	Dp	Pc	Sc	Wf	Dp	Pc	Sc	Wf	Dp
		kW	kW	l/h	kPa	kW	kW	l/h	kPa	kW	kW	l/h	kPa	kW	kW	l/h	kPa
FWE03DAT N5V3-L/R/S/T	1 (L)	1.22	1.00	210	6.00	0.84	0.81	145	3.40	1.07	0.95	153	3.70	0.77	0.77	111	2.20
	2	1.41	1.15	243	7.60	0.97	0.94	168	4.20	1.23	1.10	177	4.60	0.89	0.89	128	2.80
	3 (M)	1.60	1.31	275	9.40	1.11	1.06	191	5.20	1.40	1.25	202	5.60	1.01	1.01	145	3.40
	4	1.76	1.44	303	11.10	1.22	1.17	211	6.10	1.54	1.37	222	6.60	1.11	1.11	160	3.90
FWE04DAT N5V3-L/R/S/T	5 (H)	1.94	1.59	334	13.10	1.34	1.29	232	7.10	1.70	1.51	244	7.70	1.23	1.23	176	4.50
	1	1.21	0.99	209	3.80	0.84	0.80	145	2.00	1.06	0.94	152	2.20	0.76	0.76	110	1.20
	2 (L)	1.40	1.15	241	4.90	0.97	0.93	168	2.60	1.23	1.09	177	2.80	0.88	0.88	127	1.60
	3 (M)	1.63	1.34	282	6.60	1.13	1.09	196	3.40	1.43	1.27	206	3.70	1.03	1.03	149	2.10
	4	1.86	1.53	321	8.40	1.29	1.24	223	4.30	1.64	1.46	235	4.70	1.18	1.18	170	2.60
FWE05DAT N5V3-L/R/S/T	5 (H)	2.05	1.68	354	10.00	1.43	1.37	246	5.10	1.80	1.60	259	5.60	1.30	1.30	187	3.10
	1	1.32	1.08	228	3.50	0.92	0.88	158	1.50	1.16	1.03	167	1.70	0.84	0.84	120	0.80
	2 (L)	1.64	1.34	282	5.50	1.09	1.09	196	2.50	1.44	1.28	206	2.80	1.03	1.03	149	1.30
	3 (M)	1.99	1.63	343	8.40	1.33	1.33	239	3.80	1.75	1.56	251	4.30	1.26	1.26	181	2.10
	4	2.40	1.96	413	12.30	1.60	1.60	287	5.70	2.10	1.87	302	6.40	1.52	1.52	218	3.10
FWE06DAT N5V3-L/R/S/T	5 (H)	2.57	2.11	443	14.30	1.72	1.72	308	6.60	2.26	2.01	324	7.40	1.63	1.63	234	3.70
	1	1.23	1.01	213	0.90	0.85	0.82	147	0.30	1.08	0.96	156	0.30	0.77	0.77	112	0.10
	2	1.55	1.27	268	1.70	1.07	1.03	185	0.60	1.36	1.21	196	0.70	0.98	0.98	141	0.20
	3 (L)	2.00	1.64	343	3.20	1.39	1.33	239	1.30	1.75	1.56	252	1.50	1.26	1.26	182	0.60
	4 (M)	2.39	1.96	412	4.90	1.66	1.59	286	2.00	2.10	1.87	302	2.30	1.51	1.51	218	1.00
	5	2.72	2.23	468	6.50	1.89	1.81	325	2.80	2.38	2.12	342	3.10	1.72	1.72	247	1.40
FWE07DAT N5V3-L/R/S/T	6 (H)	3.11	2.55	536	8.80	2.16	2.07	372	3.80	2.73	2.43	392	4.30	1.97	1.97	283	2.00
	1	2.06	1.69	354	4.00	1.43	1.37	246	1.40	1.80	1.61	259	1.70	1.30	1.30	187	0.60
	2 (L)	2.41	1.97	415	5.90	1.67	1.61	288	2.30	2.11	1.88	304	2.60	1.53	1.53	219	1.00
	3	2.58	2.11	444	6.90	1.79	1.72	308	2.70	2.26	2.01	325	3.10	1.63	1.63	234	1.20
	4 (M)	2.78	2.28	479	8.30	1.93	1.85	333	3.40	2.44	2.17	350	3.80	1.76	1.76	253	1.60
	5	3.20	2.62	551	11.50	2.22	2.13	383	4.80	2.81	2.50	403	5.50	2.03	2.03	291	2.30
FWE08DAT N5V3-L/R/S/T	6 (H)	3.42	2.80	589	13.50	2.37	2.28	409	5.70	3.00	2.67	431	6.40	2.16	2.16	311	2.80
	1	2.37	1.94	409	8.60	1.65	1.58	284	5.10	2.08	1.85	299	5.50	1.51	1.51	216	3.50
	2 (L)	2.77	2.27	477	10.80	1.92	1.85	332	6.30	2.43	2.16	349	6.80	1.76	1.76	252	4.30
	3	2.96	2.42	509	12.00	2.06	1.97	354	7.00	2.60	2.31	373	7.50	1.88	1.88	270	4.70
	4	3.19	2.61	549	13.40	2.22	2.13	382	7.80	2.80	2.49	402	8.40	2.02	2.02	290	5.30
	5 (M)	3.66	3.00	630	16.70	2.54	2.44	438	9.50	3.21	2.86	461	10.30	2.32	2.32	333	6.40
FWE10DAT N5V3-L/R/S/T	6 (H)	3.92	3.21	674	18.60	2.72	2.61	468	10.50	3.44	3.06	493	11.40	2.48	2.48	356	7.00
	1	2.56	2.10	442	7.80	1.79	1.71	308	4.10	2.25	2.00	324	4.55	1.63	1.63	234	2.60
	2 (L)	3.10	2.54	534	11.00	2.16	2.07	372	5.80	2.72	2.42	391	6.33	1.97	1.97	283	3.60
	3	3.51	2.88	605	13.90	2.44	2.35	421	7.20	3.09	2.75	443	7.91	2.23	2.23	320	4.40
	4 (M)	4.18	3.43	720	19.20	2.91	2.79	501	9.80	3.67	3.27	527	10.80	2.65	2.65	381	6.00
	5	4.79	3.92	824	24.70	3.32	3.19	573	12.50	4.20	3.74	603	13.80	3.03	3.03	435	7.60
FWE11DAT N5V3-L/R/S/T	6 (H)	5.21	4.27	897	29.00	3.47	3.47	623	14.60	4.57	4.07	656	16.10	3.30	3.30	473	8.90
	1	2.81	2.30	483	9.20	1.95	1.88	337	4.80	2.46	2.19	354	5.30	1.78	1.78	256	3.00
	2 (L)	3.39	2.78	583	13.00	2.36	2.26	406	6.70	2.98	2.65	427	7.40	2.15	2.15	309	4.20
	3	3.77	3.09	650	15.80	2.63	2.52	452	8.20	3.32	2.95	476	9.00	2.40	2.40	344	5.00
	4 (M)	4.40	3.61	757	21.10	3.06	2.94	527	10.80	3.86	3.44	554	11.80	2.79	2.79	401	6.60
	5	5.12	4.20	881	28.00	3.56	3.41	612	14.20	4.49	4.00	645	15.60	3.24	3.24	466	8.60
FWE11DAT N5V3-L/R/S/T	6 (H)	5.59	4.58	962	33.00	3.88	3.72	668	16.70	4.91	4.37	704	18.40	3.54	3.54	507	10.10

SYMBOLS

- Pc = Total cooling capacity
- Sc = Sensible cooling capacity
- Wf = Water flow rate
- Dp = Water pressure drop

3D122017A

6 Capacity tables

6 - 1 Cooling Capacity Tables

FWE-DATN5V3N-(L-R-S-T)

COOLING 2 PIPE @ 0 ESP																	
Air Temperature		DB:26°C - WB:18.5°C - RH %49															
Water Temperature (Entering °C - Leaving °C)		ΔT=5								ΔT=6							
		7-12				10-15				7-13				10-16			
Model / Fan Speed		Pc	Sc	Wf	Dp	Pc	Sc	Wf	Dp	Pc	Sc	Wf	Dp	Pc	Sc	Wf	Dp
		kW	kW	l/h	kPa	kW	kW	l/h	kPa	kW	kW	l/h	kPa	kW	kW	l/h	kPa
FWE03DAT N5V3-L/R/S/T	1 (L)	1.12	0.96	192	5.20	0.79	0.79	136	3.10	0.95	0.90	137	3.10	0.70	0.70	101	2.00
	2	1.29	1.11	222	6.60	0.92	0.92	158	3.80	1.10	1.04	158	3.90	0.82	0.82	117	2.50
	3 (M)	1.47	1.26	253	8.20	1.04	1.04	180	4.70	1.25	1.18	180	4.70	0.93	0.93	133	3.00
	4	1.62	1.39	278	9.60	1.15	1.15	198	5.50	1.38	1.30	198	5.50	1.02	1.02	147	3.40
	5 (H)	1.78	1.53	306	11.30	1.27	1.27	218	6.40	1.52	1.43	218	6.40	1.13	1.13	162	4.00
FWE04DAT N5V3-L/R/S/T	1	1.11	0.95	191	3.30	0.79	0.79	136	1.80	0.95	0.89	136	1.80	0.70	0.70	100	1.10
	2 (L)	1.28	1.10	221	4.20	0.91	0.91	157	2.30	1.10	1.03	158	2.30	0.81	0.81	117	1.40
	3 (M)	1.50	1.29	258	5.60	1.07	1.07	184	3.00	1.28	1.21	184	3.00	0.95	0.95	136	1.80
	4	1.71	1.47	295	7.20	1.22	1.22	210	3.90	1.47	1.38	210	3.90	1.09	1.09	156	2.30
	5 (H)	1.89	1.62	325	8.60	1.34	1.34	231	4.60	1.61	1.52	231	4.60	1.20	1.20	172	2.70
FWE05DAT N5V3-L/R/S/T	1	1.21	1.04	209	2.90	0.86	0.86	149	1.30	1.04	0.98	149	1.30	0.77	0.77	110	0.60
	2 (L)	1.50	1.29	259	4.60	1.07	1.07	183	2.10	1.29	1.21	184	2.20	0.95	0.95	136	1.10
	3 (M)	1.83	1.57	315	7.00	1.30	1.30	224	3.30	1.57	1.47	225	3.30	1.16	1.16	166	1.70
	4	2.20	1.89	379	10.30	1.57	1.57	270	5.00	1.88	1.77	270	5.00	1.40	1.40	200	2.60
	5 (H)	2.36	2.03	407	12.00	1.68	1.68	290	5.80	2.02	1.90	290	5.90	1.50	1.50	215	3.00
FWE06DAT N5V3-L/R/S/T	1	1.13	0.97	195	0.70	0.80	0.80	138	0.20	0.97	0.91	139	0.26	0.71	0.71	102	0.10
	2	1.43	1.23	245	1.40	1.01	1.01	174	0.50	1.22	1.14	175	0.55	0.90	0.90	129	0.20
	3 (L)	1.84	1.58	316	2.60	1.30	1.30	225	1.10	1.57	1.48	225	1.10	1.16	1.16	166	0.40
	4 (M)	2.20	1.89	378	4.00	1.56	1.56	269	1.70	1.88	1.77	270	1.70	1.39	1.39	200	0.80
	5	2.50	2.15	429	5.30	1.78	1.78	306	2.40	2.14	2.01	306	2.40	1.58	1.58	227	1.10
	6 (H)	2.86	2.46	492	7.30	2.03	2.03	350	3.30	2.45	2.30	351	3.30	1.81	1.81	259	1.60
FWE07DAT N5V3-L/R/S/T	1	1.89	1.62	325	3.20	1.34	1.34	231	1.20	1.62	1.52	232	1.20	1.20	1.20	171	0.40
	2 (L)	2.21	1.90	381	4.80	1.57	1.57	271	1.90	1.89	1.78	272	1.90	1.40	1.40	201	0.70
	3	2.37	2.03	407	5.60	1.68	1.68	290	2.30	2.03	1.90	290	2.30	1.50	1.50	215	0.90
	4 (M)	2.55	2.20	439	6.80	1.82	1.82	313	2.90	2.19	2.05	313	2.90	1.62	1.62	232	1.20
	5	2.94	2.53	506	9.50	2.09	2.09	360	4.10	2.52	2.37	361	4.20	1.87	1.87	267	1.80
	6 (H)	3.14	2.70	540	11.10	2.23	2.23	384	4.90	2.69	2.53	385	4.90	1.99	1.99	285	2.20
FWE08DAT N5V3-L/R/S/T	1	2.18	1.87	375	7.60	1.55	1.55	267	4.70	1.87	1.75	268	4.70	1.39	1.39	199	3.20
	2 (L)	2.54	2.19	438	9.50	1.81	1.81	312	5.80	2.18	2.05	312	5.80	1.62	1.62	232	3.90
	3	2.72	2.34	467	10.50	1.94	1.94	333	6.40	2.33	2.19	334	6.40	1.73	1.73	247	4.20
	4	2.93	2.52	438	11.80	2.09	2.09	359	7.10	2.51	2.36	359	7.10	1.86	1.86	267	4.70
	5 (M)	3.36	2.89	578	14.60	2.39	2.39	412	8.70	2.88	2.70	412	8.70	2.13	2.13	306	5.70
	6 (H)	3.60	3.09	619	16.30	2.56	2.56	441	9.60	3.08	2.89	441	9.60	2.28	2.28	327	6.20
FWE10DAT N5V3-L/R/S/T	1	2.36	2.03	406	6.70	1.68	1.68	290	3.70	2.02	1.90	290	3.77	1.50	1.50	215	2.20
	2 (L)	2.85	2.45	490	9.50	2.03	2.03	350	5.20	2.44	2.29	350	5.22	1.81	1.81	260	3.10
	3	3.23	2.78	556	11.90	2.30	2.30	396	6.50	2.77	2.60	396	6.50	2.05	2.05	294	3.80
	4 (M)	3.84	3.31	661	16.40	2.74	2.74	471	8.80	3.29	3.09	472	8.80	2.44	2.44	350	5.20
	5	4.40	3.78	756	21.00	3.13	3.13	539	11.20	3.76	3.54	539	11.30	2.79	2.79	400	6.60
	6 (H)	4.79	4.12	823	14.70	3.40	3.40	586	13.10	4.09	3.85	587	13.20	3.03	3.03	434	7.60
FWE11DAT N5V3-L/R/S/T	1	2.58	2.22	444	7.90	1.84	1.84	317	4.40	2.21	2.08	317	4.40	1.64	1.64	235	2.60
	2 (L)	3.11	2.68	536	11.10	2.22	2.22	382	6.10	2.67	2.51	382	6.10	1.98	1.98	284	3.60
	3	3.47	2.98	597	13.60	2.47	2.47	426	7.30	2.97	2.79	426	7.30	2.21	2.21	316	4.30
	4 (M)	4.04	3.48	695	18.00	2.88	2.88	496	9.70	3.46	3.25	496	9.70	2.57	2.57	368	5.70
	5	4.70	4.04	809	23.90	3.35	3.35	576	12.70	4.03	3.78	577	12.80	2.98	2.98	428	7.40
	6 (H)	5.13	4.41	883	28.10	3.65	3.65	628	14.90	4.39	4.13	630	15.00	3.25	3.25	466	8.60

SYMBOLS

- Pc = Total cooling capacity
- Sc = Sensible cooling capacity
- Wf = Water flow rate
- Dp = Water pressure drop

3D122019A

6 Capacity tables

6 - 2 Heating Capacity Tables

6
FWE-DATN5V3N-(L-R-S-T)

HEATING 2 PIPE @ 0 ESP													
Air Temperature		DB:20°C						DB:22°C					
Water Temperature (Entering °C - Leaving °C)		ΔT=5						ΔT=5					
Model / Fan Speed		50-45			45-40			50-45			45-40		
		Ph kW	Wf l/h	Dp kPa	Ph kW	Wf l/h	Dp kPa	Ph kW	Wf l/h	Dp kPa	Ph kW	Wf l/h	Dp kPa
FWE03DAT N5V3-L/R/S/T	1 (L)	1.66	285	12.90	1.34	230	8.50	1.54	264	11.10	1.21	209	7.00
	2	1.87	322	16.40	1.51	260	10.80	1.73	298	14.10	1.37	236	8.90
	3 (M)	2.09	360	20.30	1.69	290	13.40	1.93	333	17.50	1.53	263	11.00
	4	2.28	391	24.00	1.84	316	15.80	2.11	362	20.60	1.67	286	13.00
FWE04DAT N5V3-L/R/S/T	5 (H)	2.47	426	28.30	2.00	344	18.60	2.29	394	24.30	1.81	312	15.40
	1	1.98	341	10.40	1.60	275	6.70	1.83	315	8.90	1.46	250	5.50
	2 (L)	2.20	379	12.90	1.78	306	8.30	2.04	350	11.00	1.61	277	6.80
	3 (M)	2.47	424	16.20	1.99	343	10.50	2.28	393	13.80	1.81	311	8.60
	4	2.73	470	19.90	2.21	379	12.90	2.53	435	17.00	2.00	344	10.60
FWE05DAT N5V3-L/R/S/T	5 (H)	2.95	507	23.20	2.38	409	15.10	2.73	469	19.80	2.16	371	12.40
	1	2.08	358	11.50	1.68	289	7.40	1.92	331	9.80	1.52	262	6.10
	2 (L)	2.45	422	16.00	1.98	341	10.40	2.27	391	13.70	1.80	309	8.50
	3 (M)	2.88	495	22.10	2.32	400	14.30	2.66	458	18.90	2.11	362	11.80
	4	3.36	578	30.20	2.71	467	19.60	3.11	535	25.80	2.46	423	16.10
FWE06DAT N5V3-L/R/S/T	5 (H)	3.58	615	34.20	2.89	496	22.20	3.31	569	29.30	2.62	450	18.20
	1	2.63	453	7.40	2.12	366	4.90	2.44	419	6.40	1.93	332	4.00
	2	3.05	525	9.90	2.46	424	6.50	2.82	486	8.50	2.23	384	5.40
	3 (L)	3.64	626	14.10	2.94	505	9.20	3.37	579	12.10	2.66	458	7.60
	4 (M)	4.16	715	18.30	3.36	577	12.00	3.85	662	15.70	3.04	523	9.90
	5	4.58	788	22.20	3.70	636	14.50	4.24	729	19.00	3.36	577	12.00
FWE07DAT N5V3-L/R/S/T	6 (H)	4.96	853	26.00	4.00	689	17.00	4.59	789	22.30	3.63	624	14.00
	1	3.39	584	22.90	2.74	471	15.30	3.14	540	19.70	2.48	427	12.70
	2 (L)	3.91	672	29.90	3.15	542	19.90	3.62	622	25.80	2.86	492	16.60
	3	4.15	714	33.60	3.35	577	22.40	3.84	661	29.00	3.04	523	18.60
	4 (M)	4.45	766	38.40	3.60	618	25.50	4.12	709	33.10	3.26	561	21.20
	5	5.07	871	49.10	4.09	703	32.60	4.69	806	42.30	3.71	638	27.10
FWE08DAT N5V3-L/R/S/T	6 (H)	5.40	930	55.70	4.36	751	26.90	5.00	860	48.00	3.96	681	30.60
	1	3.96	681	21.80	3.20	550	15.10	3.67	630	19.10	2.90	499	12.90
	2 (L)	4.42	759	26.30	3.56	613	18.10	4.09	703	21.00	3.23	556	15.40
	3	4.63	797	28.70	3.74	643	19.80	4.29	737	25.00	3.39	583	16.70
	4	4.90	843	31.60	3.95	680	21.80	4.53	780	27.60	3.59	617	18.40
	5 (M)	5.44	936	38.10	4.39	755	26.10	5.04	866	33.20	3.98	685	22.00
FWE10DAT N5V3-L/R/S/T	6 (H)	5.74	988	42.00	4.64	797	28.70	5.32	914	36.50	4.21	723	24.20
	1	4.17	718	23.90	3.37	579	16.50	3.86	664	20.90	3.06	526	14.00
	2 (L)	4.82	829	30.70	3.89	669	21.10	4.46	767	26.80	3.53	607	17.90
	3	5.33	916	36.70	4.30	739	25.10	4.93	847	31.90	3.90	670	21.20
	4 (M)	6.14	1056	47.30	4.96	852	32.30	5.69	977	41.20	4.50	773	27.20
	5	6.88	1183	58.10	5.55	955	39.50	6.37	1094	50.50	5.04	866	33.20
FWE11DAT N5V3-L/R/S/T	6 (H)	7.41	1275	66.60	5.98	1029	45.10	6.86	1179	57.80	5.43	933	37.90
	1	4.46	768	26.80	3.60	620	18.50	4.13	710	23.40	3.27	562	15.70
	2 (L)	5.17	889	34.80	4.17	717	23.90	4.78	822	30.30	3.78	651	20.20
	3	5.64	969	40.60	4.55	782	27.80	5.22	897	35.30	4.13	710	23.40
	4 (M)	6.40	1101	51.00	5.17	888	24.70	5.92	1018	44.30	4.69	806	29.20
	5	7.28	1252	64.50	5.88	1011	43.70	6.74	1159	56.00	5.33	917	36.70
6 (H)	7.87	1353	74.30	6.36	1092	50.30	7.28	1252	64.50	5.76	991	42.20	

SYMBOLS

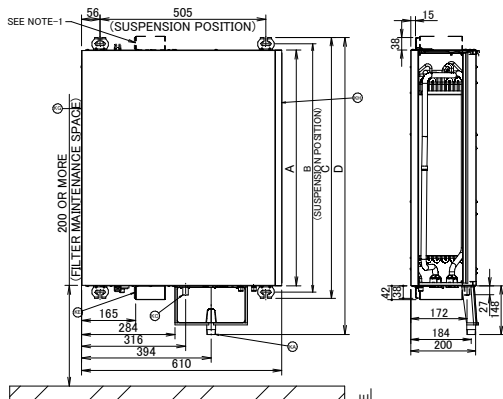
- Ph = Total heating capacity
- Wf = Water flow rate
- Dp = Water pressure drop

3D122208A

7 Dimensional drawings

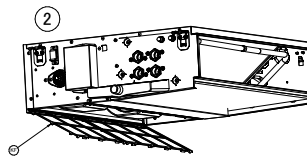
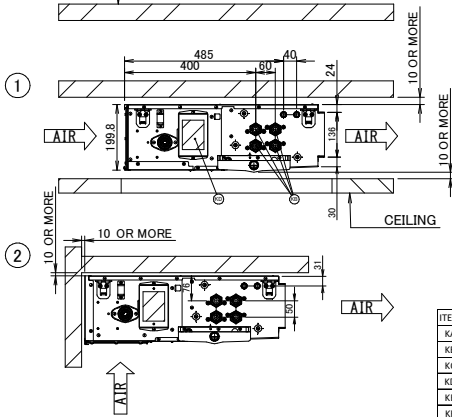
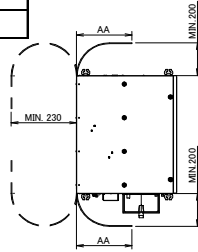
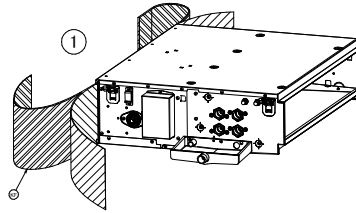
7 - 1 Dimensional Drawings

FWE-DAFN5V3(L-R-S-T)
FWE-DATN5V3(L-R-S-T)

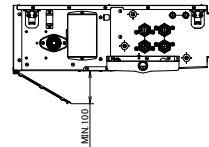


MODEL NAME	AA(MAX.)
FWE03/04/05/DAF/TN5V3L/R/S/T	710
FWE06DAF/TN5V3L/R/S/T	820
FWE07/08/09/10/11DAF/TN5V3L/R/S/T	1020

FILTER MAINTENANCE SPACE



FILTER MAINTENANCE SPACE



MODEL NAME	A	B	C	D
FWE03/04/05/DAF/TN5V3-L/R/S/T	719	757	795	905
FWE06DAF/TN5V3-L/R/S/T	919	957	995	1105
FWE07/08/10/11DAF/TN5V3-L/R/S/T	1119	1157	1195	1305

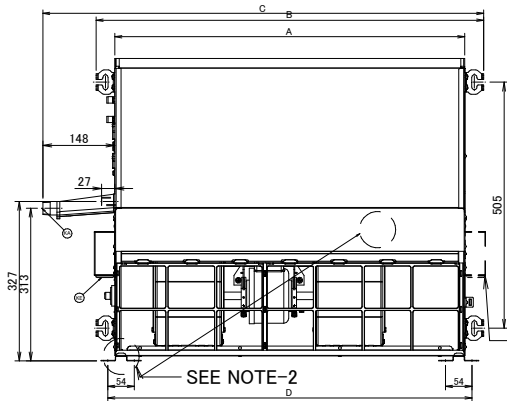
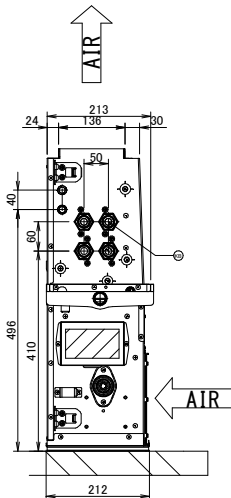
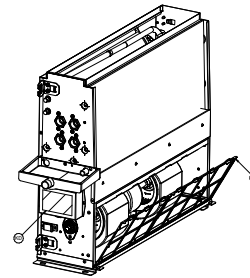
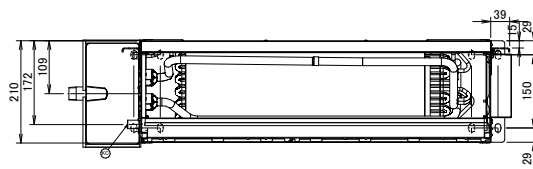
ITEM	NAME	DESCRIPTION
KA	ADDITIONAL DRAIN PAN SOCKET	OD Ø26.4(R3/4")
KB	WATER PIPE CONNECTION BODY	ID Ø26.4(G3/4")
KC	DRAIN PIPE CONNECTION	OD Ø17.3
KD	WIRING DIAGRAM	
KE	POWER SUPPLY CONNECTION	
KF	AIR FILTER	

NOTES:

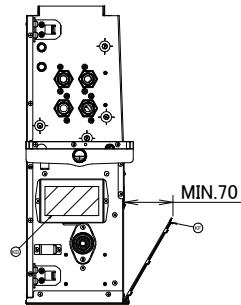
1) POWER SUPPLY CONNECTION SIDE INTERCHANGEABLE IN FIELD.

1D125336

FWE-DAFN5V3(L-R-S-T)
FWE-DAFN5V3(L-R-S-T)



FILTER MAINTENANCE SPACE



MODEL NAME	A	B	C	D
FWE03/04/05/DAF/TN5V3-L/R/S/T	719	795	905	747
FWE06DAF/TN5V3-L/R/S/T	919	995	1105	947
FWE07/08/10/11DAF/TN5V3-L/R/S/T	1119	1195	1305	1147

ITEM	NAME	DESCRIPTION
KA	ADDITIONAL DRAIN PAN SOCKET	OD Ø26.4(R3/4")
KB	WATER PIPE CONNECTION BODY	ID Ø26.4(G3/4")
KC	DRAIN PIPE CONNECTION	OD Ø17.3
KD	WIRING DIAGRAM	
KE	POWER SUPPLY CONNECTION	
KF	AIR FILTER	

NOTES:

1) POWER SUPPLY CONNECTION SIDE INTERCHANGEABLE IN FIELD.

2) OPTION KIT (ESFH01D5) SHALL BE MOUNTING FOR VERTICAL INSTALLATION .

1D125339

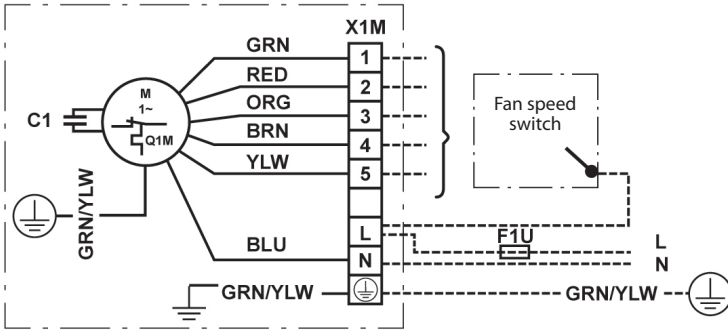
8 Wiring diagrams

8 - 1 Wiring Diagrams - Single Phase

8

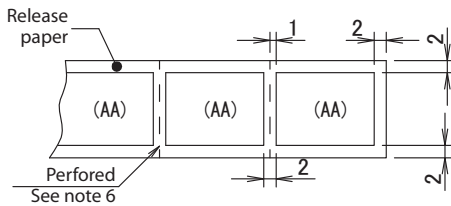
FWE03-05DAFN5V3(L-R-S-T)
FWE03-05DATN5V3(L-R-S-T)

Wiring diagram

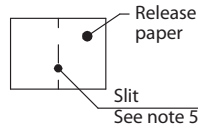


-----	Field wiring
M	Fan motor
GRN/YLW	Green / Yellow
F1U	Fuse
X1M	Terminal strip
1	Lowest speed
5	Highest speed
L	AC system supply
N	Neutral
C1	Capacitor
⊕	Protector earth
↓	Earth
Q1M	Self-operating thermal protector
GRN	Green
RED	Red
ORG	Orange
BRN	Brown
YLW	Yellow
BLU	Blue

* For the power requirements, refer to the name plate



In case of roll
(Front side of roll)



In case of plate
(Rear side of plate)

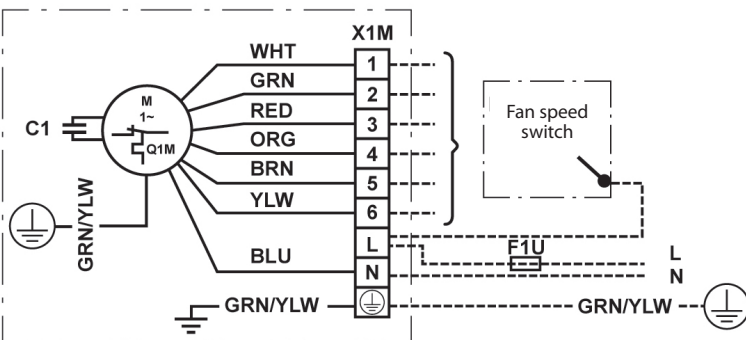
NOTES

1. Background: white, printing colour: black.
2. After printing apply coating material on face side.
3. Printed label shall comply with IEC/EN 60335-2-40 CLAUSE 7.14 (rubbing test)
4. Single side adhesive should be apply.
5. Provide slit in crosswise direction on separate liner for plate types.
6. Provide perfored in crosswise direction on roll types.
7. Refer to 4D121422-1-lsp-wiring-diagram-190109.ai for dimensions data.

4D121422A

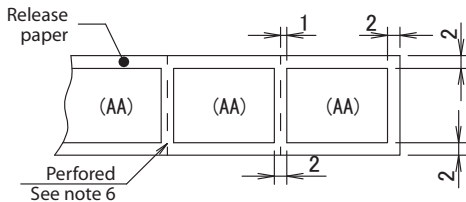
FWE06-11DAFN5V3(L-R-S-T)
FWE06-11DATN5V3(L-R-S-T)

Wiring diagram

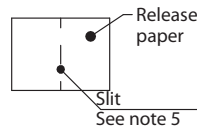


-----	Field wiring
M	Fan motor
GRN/YLW	Green / Yellow
F1U	Fuse
X1M	Terminal strip
1	Lowest speed
6	Highest speed
L	AC system supply
N	Neutral
C1	Capacitor
⊕	Protector earth
↓	Earth
Q1M	Self-operating thermal protector
GRN	Green
RED	Red
ORG	Orange
BRN	Brown
YLW	Yellow
BLU	Blue

* For the power requirements, refer to the name plate



In case of roll
(Front side of roll)



In case of plate
(Rear side of plate)

NOTES

1. Background: white, printing colour: black.
2. After printing apply coating material on face side.
3. Printed label shall comply with IEC/EN 60335-2-40 CLAUSE 7.14 (rubbing test)
4. Single side adhesive should be apply.
5. Provide slit in crosswise direction on separate liner for plate types.
6. Provide perfored in crosswise direction on roll types.
7. Refer to 4D118236-1-A-msp-wiring-diagram-190111.ai for dimensions data.

4D118236B

9 Sound data

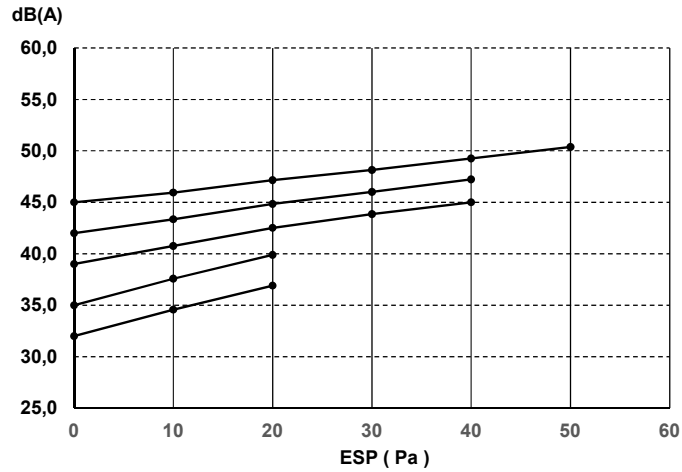
9 - 1 Sound Power Spectrum

FWE03DAFN5V3(L-R-S-T)
FWE03DATN5V3(L-R-S-T)

Sound Power overall (dBA)

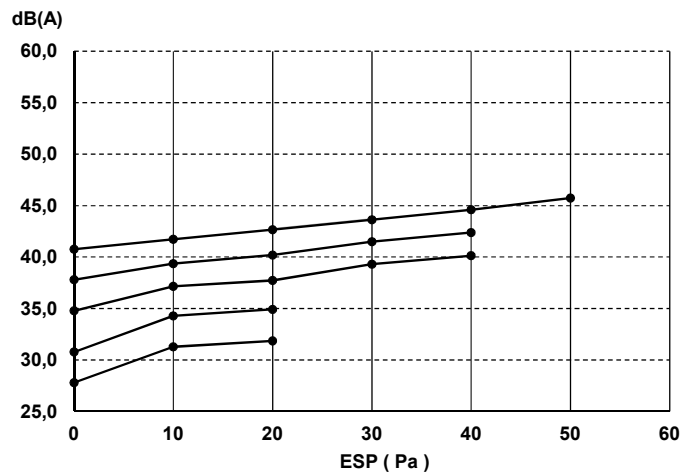
Whole casing

ESP (Pa)	Fan speed				
	5 H	4	3 M	2	1 L
0	45,0	42,0	39,0	35,0	32,0
10	46,0	43,4	40,8	37,6	34,6
20	47,2	44,8	42,5	39,9	36,9
30	48,1	46,0	43,9		
40	49,3	47,2	45,0		
50	50,4				



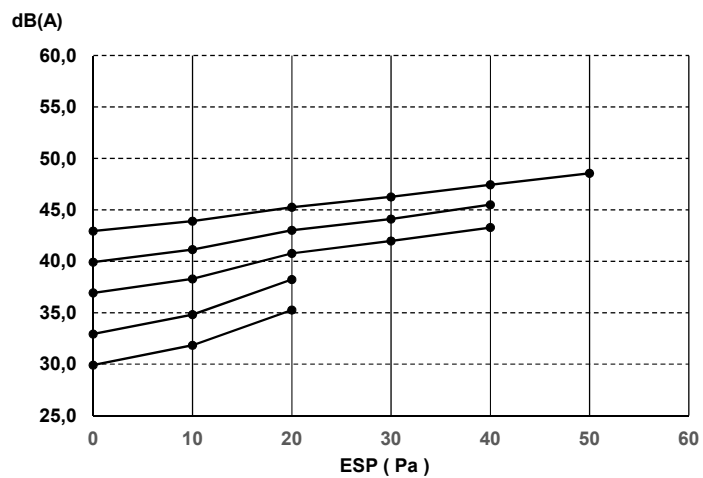
Discharge

ESP (Pa)	Fan speed				
	5 H	4	3 M	2	1 L
0	40,8	37,8	34,8	30,8	27,8
10	41,7	39,4	37,1	34,3	31,3
20	42,7	40,2	37,7	34,9	31,9
30	43,6	41,5	39,3		
40	44,6	42,4	40,1		
50	45,7				



Inlet + casing

ESP (Pa)	Fan speed				
	5 H	4	3 M	2	1 L
0	42,9	39,9	36,9	32,9	29,9
10	43,9	41,1	38,3	34,8	31,8
20	45,3	43,0	40,8	38,2	35,3
30	46,3	44,1	42,0		
40	47,4	45,5	43,3		
50	48,6				



3D122198A

9 Sound data

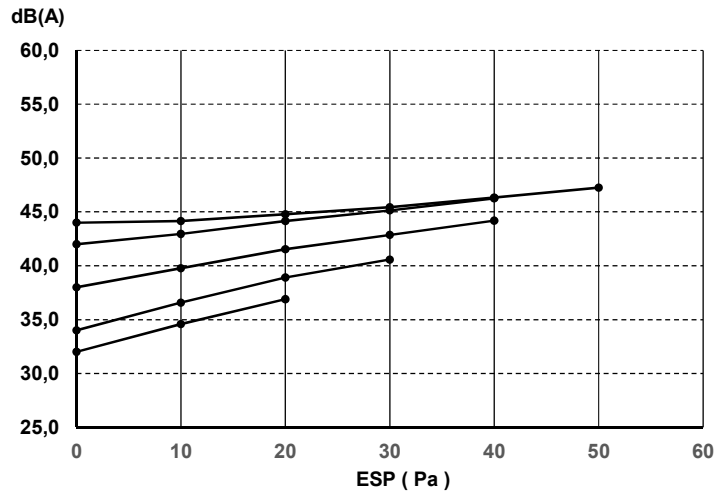
9 - 1 Sound Power Spectrum

FWE04DAFN5V3(L-R-S-T)
FWE04DATN5V3(L-R-S-T)

Sound Power overall (dBA)

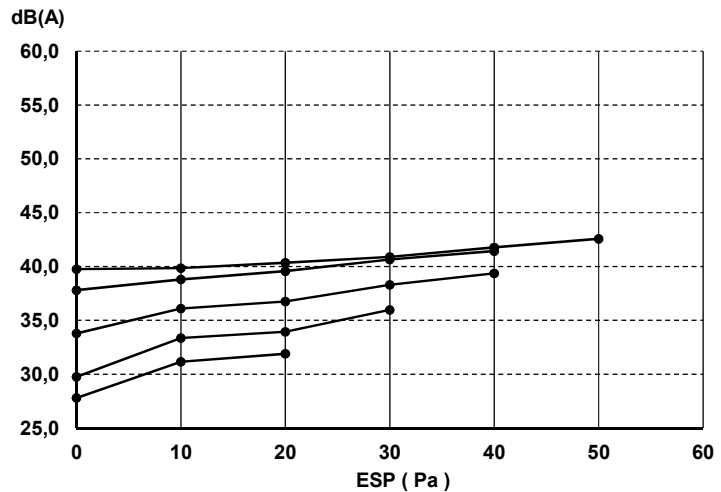
Whole casing

ESP (Pa)	Fan speed				
	5 H	4	3 M	2 L	1
0	44,0	42,0	38,0	34,0	32,0
10	44,2	43,0	39,8	36,6	34,6
20	44,8	44,2	41,5	38,9	36,9
30	45,4	45,1	42,9	40,6	
40	46,3	46,3	44,2		
50	47,3				



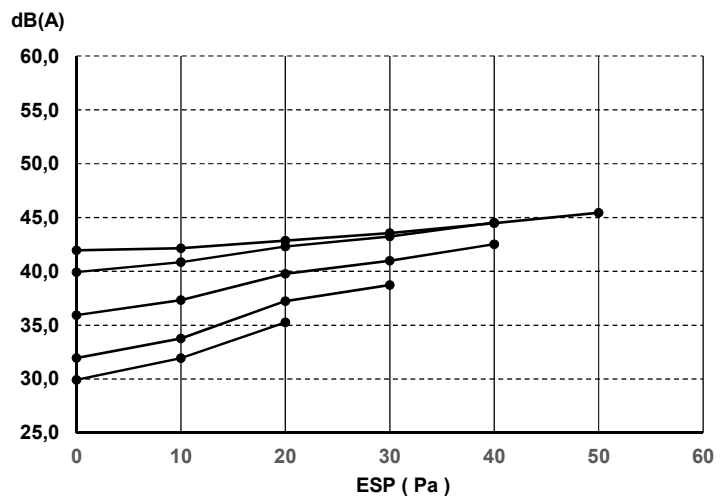
Discharge

ESP (Pa)	Fan speed				
	5 H	4	3 M	2 L	1
0	39,8	37,8	33,8	29,8	27,8
10	39,9	38,8	36,1	33,4	31,2
20	40,4	39,6	36,7	33,9	31,9
30	40,9	40,6	38,3	36,0	
40	41,8	41,4	39,4		
50	42,6				



Inlet + casing

ESP (Pa)	Fan speed				
	5 H	4	3 M	2 L	1
0	42,0	39,9	35,9	31,9	29,9
10	42,1	40,8	37,3	33,8	31,9
20	42,8	42,3	39,8	37,2	35,3
30	43,5	43,2	41,0	38,7	
40	44,5	44,5	42,5		
50	45,4				



3D122199A

9 Sound data

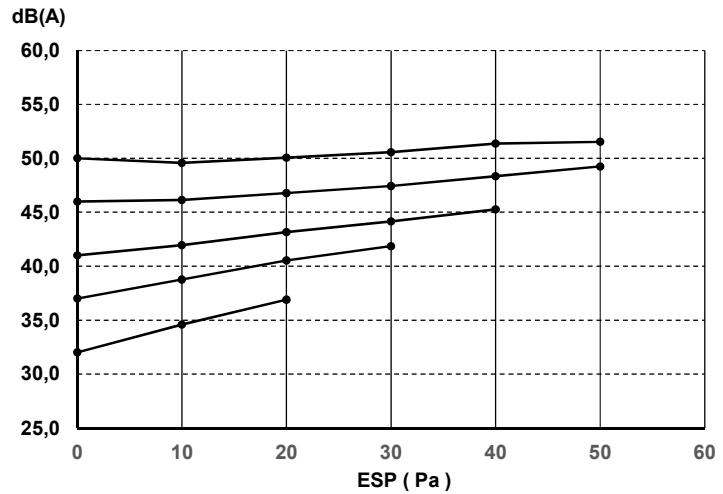
9 - 1 Sound Power Spectrum

FWE05DAFN5V3(L-R-S-T)
FWE05DATN5V3(L-R-S-T)

Sound Power overall (dBA)

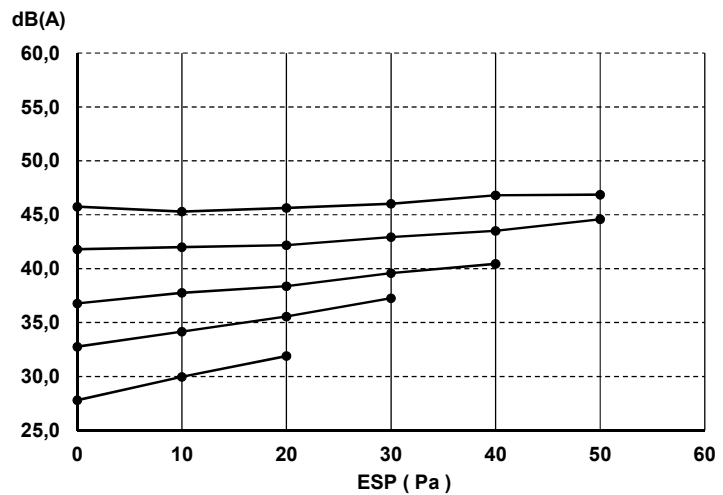
Whole casing

ESP (Pa)	Fan speed				
	5 H	4	3 M	2 L	1
0	50,0	46,0	41,0	37,0	32,0
10	49,6	46,2	42,0	38,8	34,6
20	50,1	46,8	43,2	40,5	36,9
30	50,6	47,4	44,1	41,9	
40	51,4	48,3	45,3		
50	51,5	49,3			



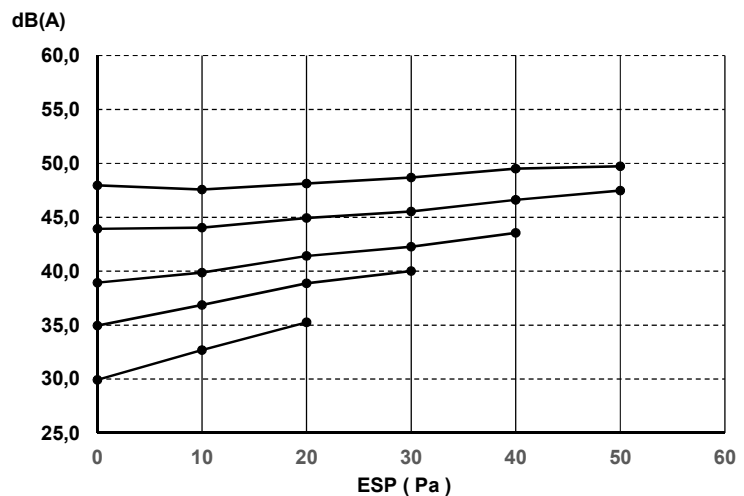
Discharge

ESP (Pa)	Fan speed				
	5 H	4	3 M	2 L	1
0	45,8	41,8	36,8	32,8	27,8
10	45,3	42,0	37,8	34,2	30,0
20	45,6	42,2	38,4	35,6	31,9
30	46,0	42,9	39,6	37,3	
40	46,8	43,5	40,4		
50	46,9	44,6			



Inlet + casing

ESP (Pa)	Fan speed				
	5 H	4	3 M	2 L	1
0	48,0	43,9	38,9	34,9	29,9
10	47,6	44,0	39,9	36,9	32,7
20	48,1	44,9	41,4	38,9	35,3
30	48,7	45,5	42,3	40,0	
40	49,5	46,6	43,5		
50	49,7	47,5			



3D122200A

9 Sound data

9 - 1 Sound Power Spectrum

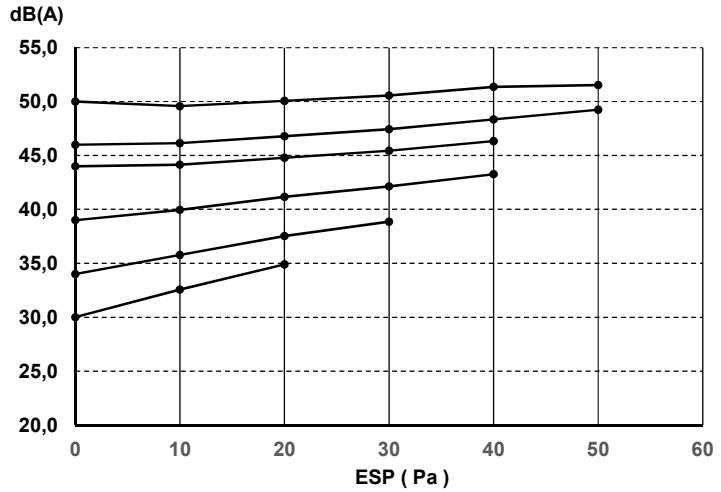
FWE06DAFN5V3(L-R-S-T)
FWE06DATN5V3(L-R-S-T)

9

Sound Power overall (dBA)

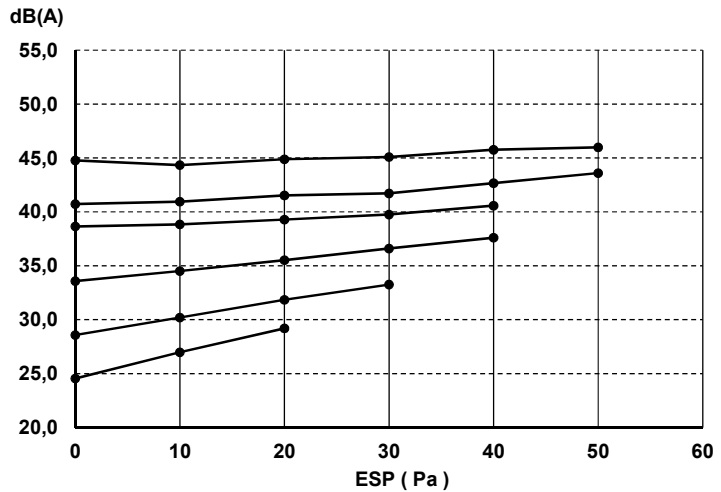
Whole casing

ESP (Pa)	Fan speed					
	6 H	5	4 M	3 L	2	1
0	50,0	46,0	44,0	39,0	34,0	30,0
10	49,6	46,2	44,2	40,0	35,8	32,6
20	50,1	46,8	44,8	41,2	37,5	34,9
30	50,6	47,4	45,4	42,1	38,9	
40	51,4	48,3	46,3	43,3		
50	51,5	49,3				



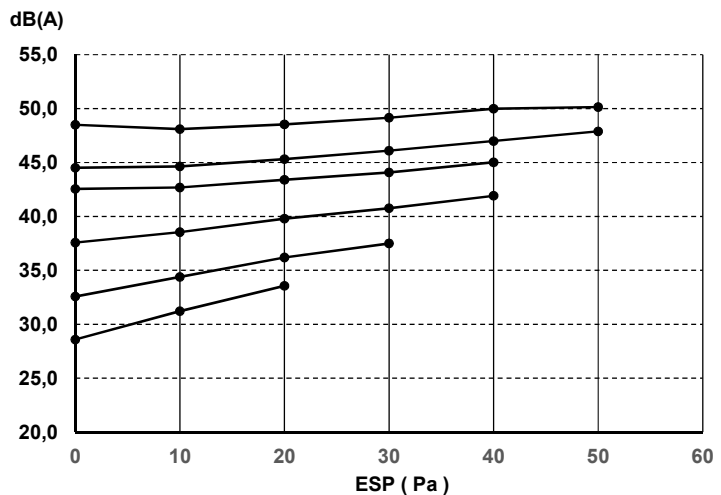
Discharge

ESP (Pa)	Fan speed					
	6 H	5	4 M	3 L	2	1
0	44,8	40,7	38,7	33,6	28,6	24,5
10	44,3	41,0	38,8	34,5	30,2	27,0
20	44,9	41,5	39,3	35,5	31,8	29,2
30	45,1	41,7	39,8	36,6	33,3	
40	45,8	42,7	40,6	37,6		
50	46,0	43,6				



Inlet + casing

ESP (Pa)	Fan speed					
	6 H	5	4 M	3 L	2	1
0	48,5	44,5	42,5	37,6	32,6	28,6
10	48,1	44,6	42,7	38,5	34,4	31,2
20	48,5	45,3	43,4	39,8	36,2	33,6
30	49,1	46,1	44,1	40,7	37,5	
40	50,0	47,0	45,0	41,9		
50	50,1	47,9				



3D122201A

9 Sound data

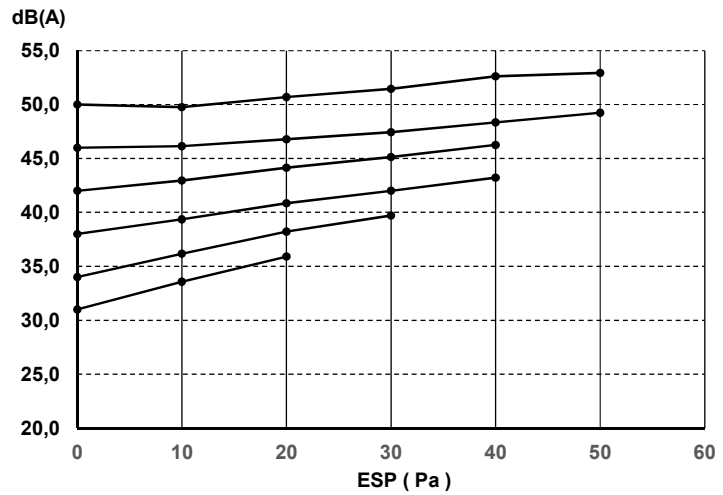
9 - 1 Sound Power Spectrum

FWE07DAFN5V3(L-R-S-T)
FWE07DATN5V3(L-R-S-T)

Sound Power overall (dBA)

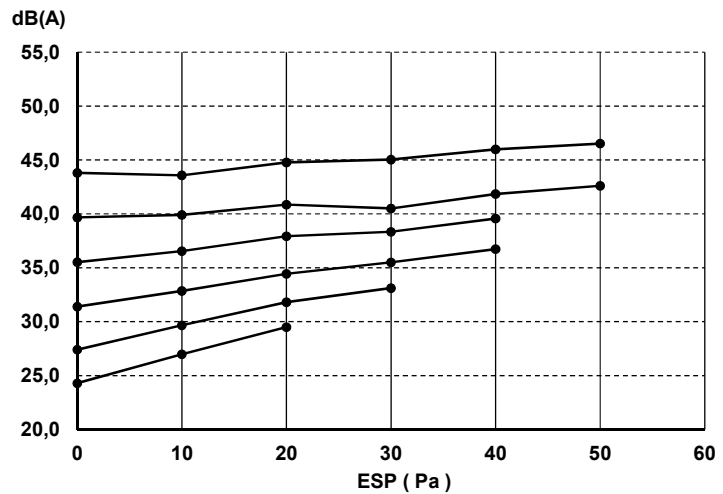
Whole casing

ESP (Pa)	Fan speed					
	6	5	4	3	2	1
	H		M		L	
0	50,0	46,0	42,0	38,0	34,0	31,0
10	49,8	46,2	43,0	39,4	36,2	33,6
20	50,7	46,8	44,2	40,8	38,2	35,9
30	51,5	47,4	45,1	42,0	39,7	
40	52,6	48,3	46,3	43,2		
50	52,9	49,3				



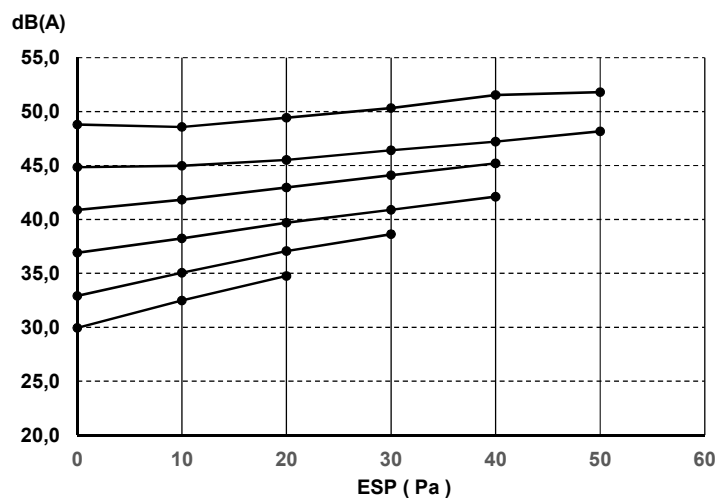
Discharge

ESP (Pa)	Fan speed					
	6	5	4	3	2	1
	H		M		L	
0	43,8	39,7	35,5	31,4	27,4	24,3
10	43,6	39,9	36,6	32,9	29,7	27,0
20	44,8	40,9	37,9	34,4	31,8	29,5
30	45,0	40,5	38,3	35,5	33,1	
40	46,0	41,8	39,6	36,7		
50	46,5	42,6				



Inlet + casing

ESP (Pa)	Fan speed					
	6	5	4	3	2	1
	H		M		L	
0	48,8	44,8	40,9	36,9	32,9	29,9
10	48,6	45,0	41,8	38,2	35,0	32,5
20	49,4	45,5	43,0	39,7	37,1	34,8
30	50,3	46,4	44,1	40,9	38,6	
40	51,5	47,2	45,2	42,1		
50	51,8	48,2				



3D122202A

9 Sound data

9 - 1 Sound Power Spectrum

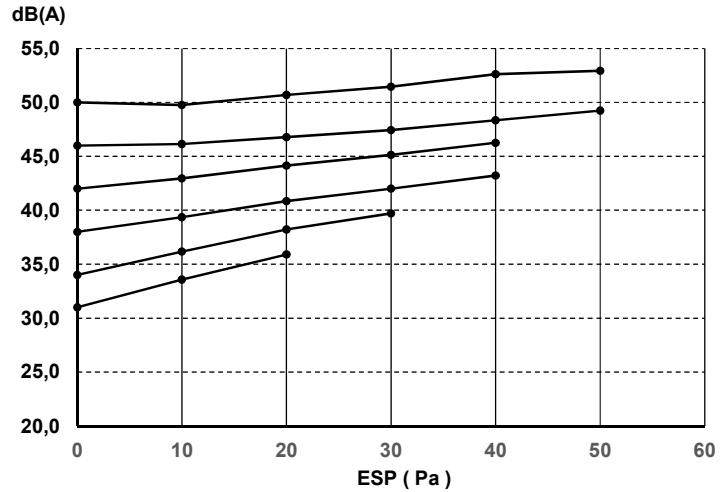
9

FWE08DAFN5V3(L-R-S-T)
FWE08DATN5V3(L-R-S-T)

Sound Power overall (dBA)

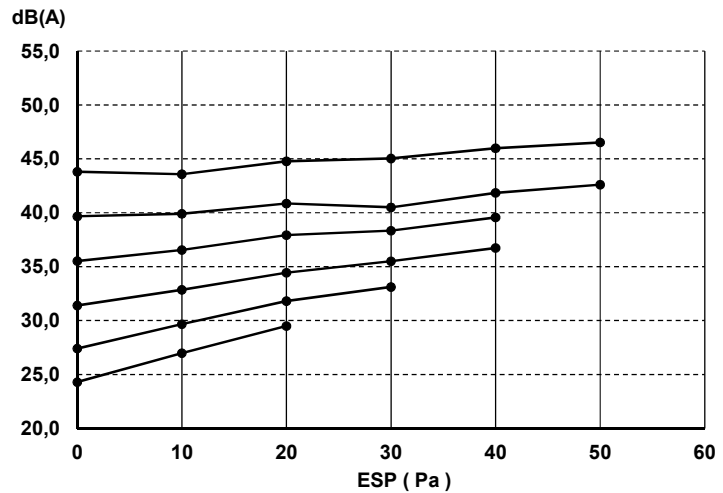
Whole casing

ESP (Pa)	Fan speed					
	6 H	5 M	4	3	2 L	1
0	50,0	46,0	42,0	38,0	34,0	31,0
10	49,8	46,2	43,0	39,4	36,2	33,6
20	50,7	46,8	44,2	40,8	38,2	35,9
30	51,5	47,4	45,1	42,0	39,7	
40	52,6	48,3	46,3	43,2		
50	52,9	49,3				



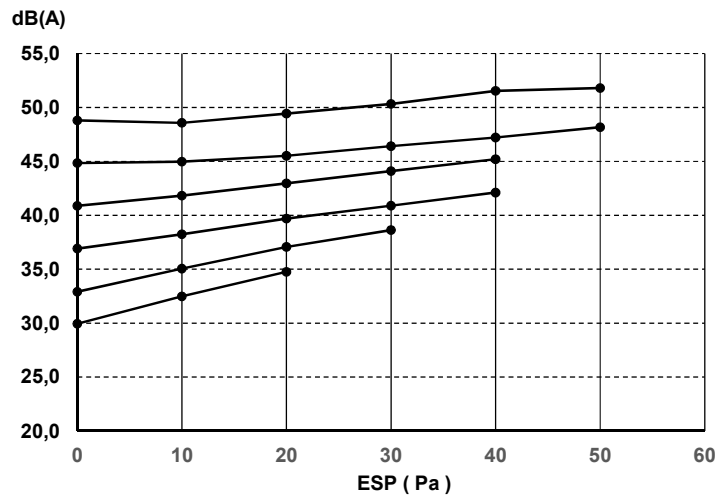
Discharge

ESP (Pa)	Fan speed					
	6 H	5 M	4	3	2 L	1
0	43,8	39,7	35,5	31,4	27,4	24,3
10	43,6	39,9	36,6	32,9	29,7	27,0
20	44,8	40,9	37,9	34,4	31,8	29,5
30	45,0	40,5	38,3	35,5	33,1	
40	46,0	41,8	39,6	36,7		
50	46,5	42,6				



Inlet + casing

ESP (Pa)	Fan speed					
	6 H	5 M	4	3	2 L	1
0	48,8	44,8	40,9	36,9	32,9	29,9
10	48,6	45,0	41,8	38,2	35,0	32,5
20	49,4	45,5	43,0	39,7	37,1	34,8
30	50,3	46,4	44,1	40,9	38,6	
40	51,5	47,2	45,2	42,1		
50	51,8	48,2				



3D122485A

9 Sound data

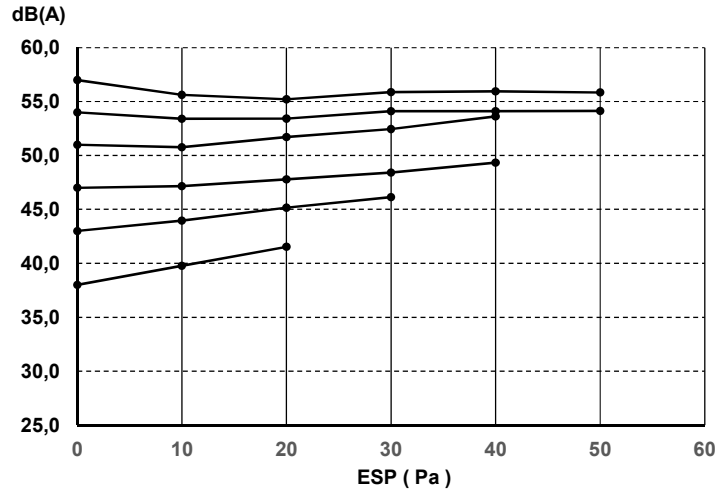
9 - 1 Sound Power Spectrum

FWE10DAFN5V3(L-R-S-T)
FWE10DATN5V3(L-R-S-T)

Sound Power overall (dBA)

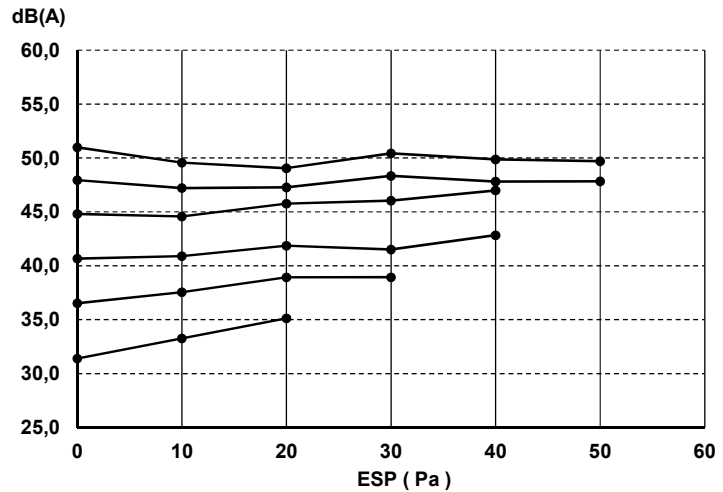
Whole casing

ESP (Pa)	Fan speed					
	6	5	4	3	2	1
	H		M		L	
0	57,0	54,0	51,0	47,0	43,0	38,0
10	55,6	53,4	50,8	47,2	44,0	39,8
20	55,2	53,4	51,7	47,8	45,2	41,5
30	55,9	54,1	52,5	48,4	46,1	
40	56,0	54,1	53,6	49,3		
50	55,9	54,1				



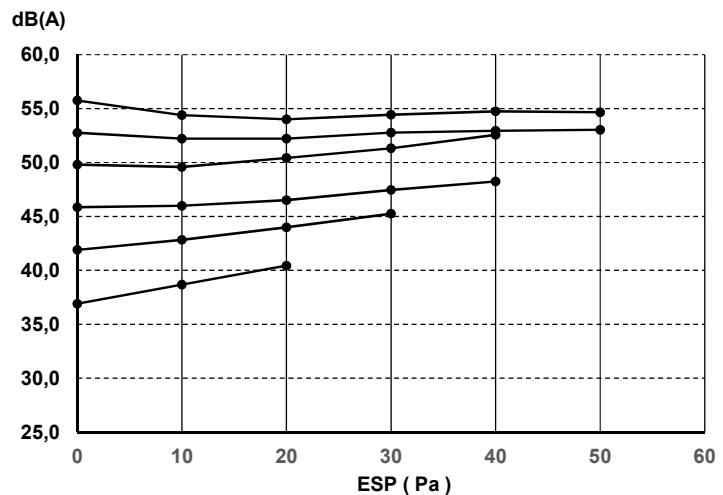
Discharge

ESP (Pa)	Fan speed					
	6	5	4	3	2	1
	H		M		L	
0	51,0	48,0	44,8	40,7	36,5	31,4
10	49,6	47,2	44,6	40,9	37,6	33,3
20	49,1	47,3	45,8	41,9	38,9	35,1
30	50,4	48,3	46,0	41,5	38,9	
40	49,9	47,8	47,0	42,8		
50	49,7	47,8				



Inlet + casing

ESP (Pa)	Fan speed					
	6	5	4	3	2	1
	H		M		L	
0	55,7	52,8	49,8	45,8	41,9	36,9
10	54,4	52,2	49,6	46,0	42,8	38,7
20	54,0	52,2	50,4	46,5	44,0	40,4
30	54,4	52,8	51,3	47,5	45,2	
40	54,7	52,9	52,6	48,2		
50	54,6	53,0				



3D122203A

9 Sound data

9 - 1 Sound Power Spectrum

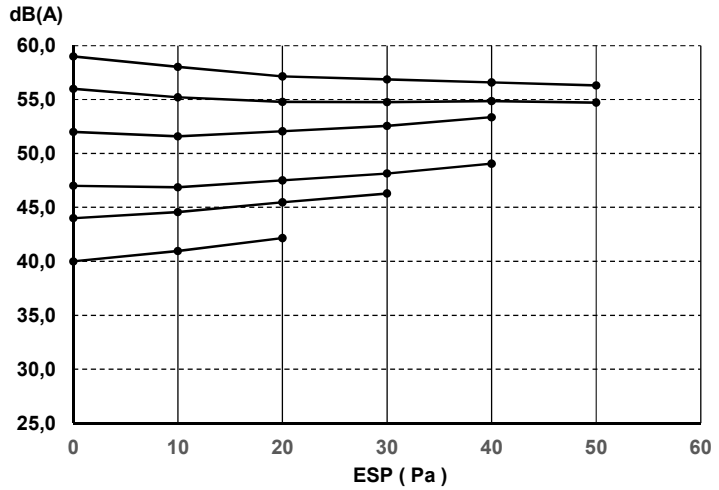
9

FWE11DAFN5V3(L-R-S-T)
FWE11DATN5V3(L-R-S-T)

Sound Power overall (dBA)

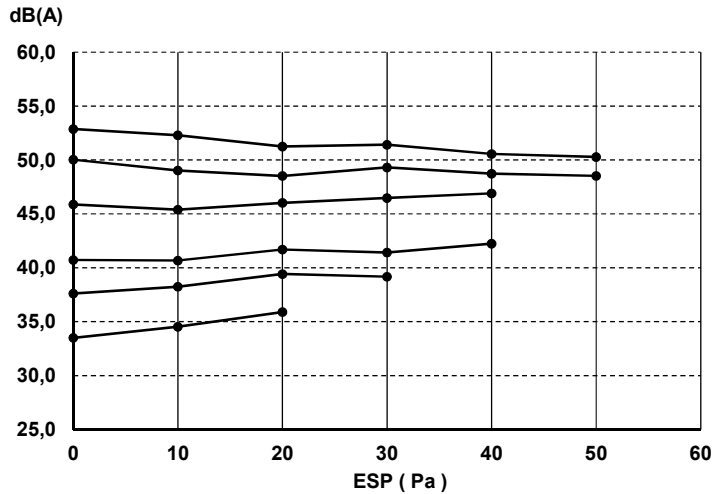
Whole casing

ESP (Pa)	Fan speed					
	6	5	4	3	2	1
	H		M		L	
0	59,0	56,0	52,0	47,0	44,0	40,0
10	58,0	55,2	51,6	46,9	44,6	41,0
20	57,2	54,8	52,1	47,5	45,5	42,2
30	56,9	54,8	52,6	48,2	46,3	
40	56,6	54,9	53,4	49,1		
50	56,3	54,7				



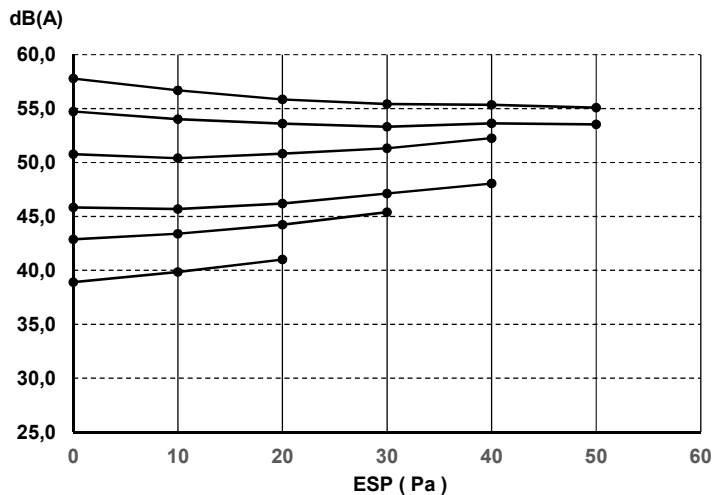
Discharge

ESP (Pa)	Fan speed					
	6	5	4	3	2	1
	H		M		L	
0	52,9	50,0	45,9	40,7	37,6	33,5
10	52,3	49,0	45,4	40,7	38,2	34,5
20	51,3	48,5	46,0	41,7	39,4	35,9
30	51,4	49,3	46,5	41,4	39,2	
40	50,6	48,7	46,9	42,2		
50	50,3	48,5				



Inlet + casing

ESP (Pa)	Fan speed					
	6	5	4	3	2	1
	H		M		L	
0	57,8	54,7	50,8	45,8	42,9	38,9
10	56,7	54,0	50,4	45,7	43,4	39,8
20	55,9	53,6	50,8	46,2	44,2	41,0
30	55,4	53,3	51,3	47,1	45,4	
40	55,4	53,6	52,3	48,0		
50	55,1	53,5				



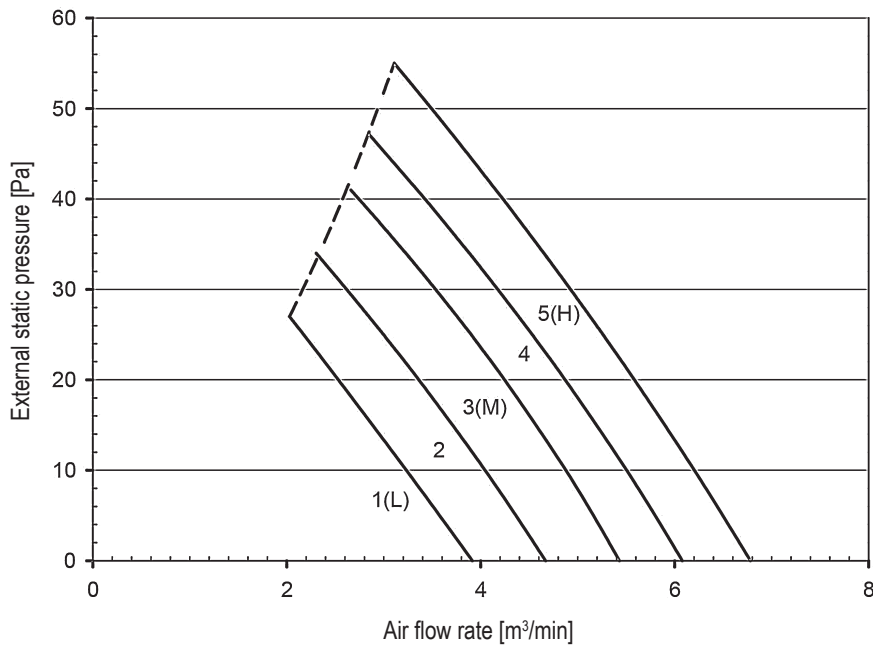
3D122205A

10 Fan characteristics

10 - 1 Fan Characteristics

FWE03DAFN5V3(L-R-S-T)
FWE03DATN5V3(L-R-S-T)

FWE03DA(F/T)N5V3(L/R/S/T)



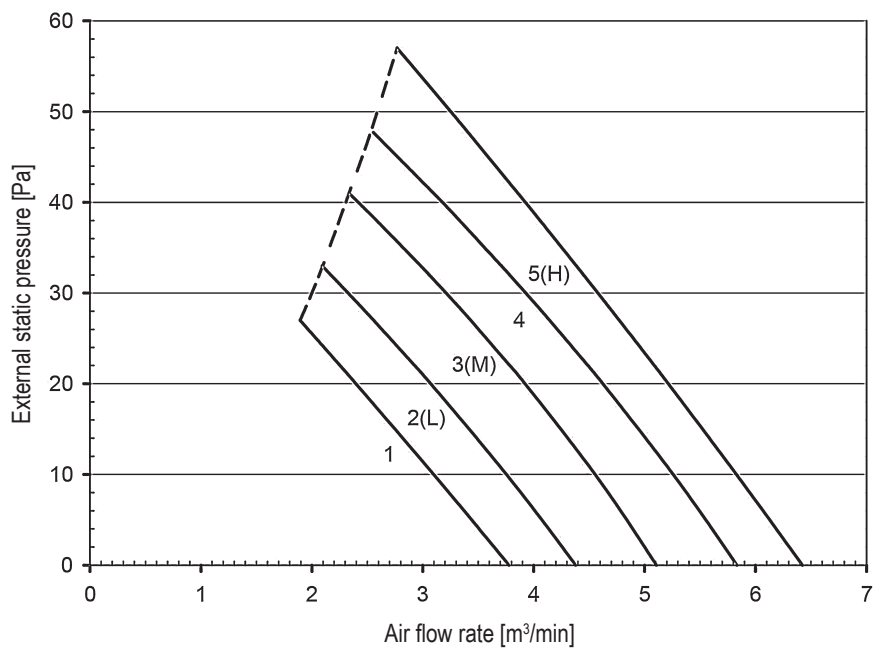
NOTES

1. The fan characteristics shown are in "fan only" mode.
2. Air temperature condition: 20°C DB, 15°C WB (RH 59%).
3. Power supply condition: 50Hz 230V.

4D122210A

FWE04DAFN5V3(L-R-S-T)
FWE04DATN5V3(L-R-S-T)

FWE04DA(F/T)N5V3(L/R/S/T)



NOTES

1. The fan characteristics shown are in "fan only" mode.
2. Air temperature condition: 20°C DB, 15°C WB (RH 59%).
3. Power supply condition: 50Hz 230V.

4D122211A

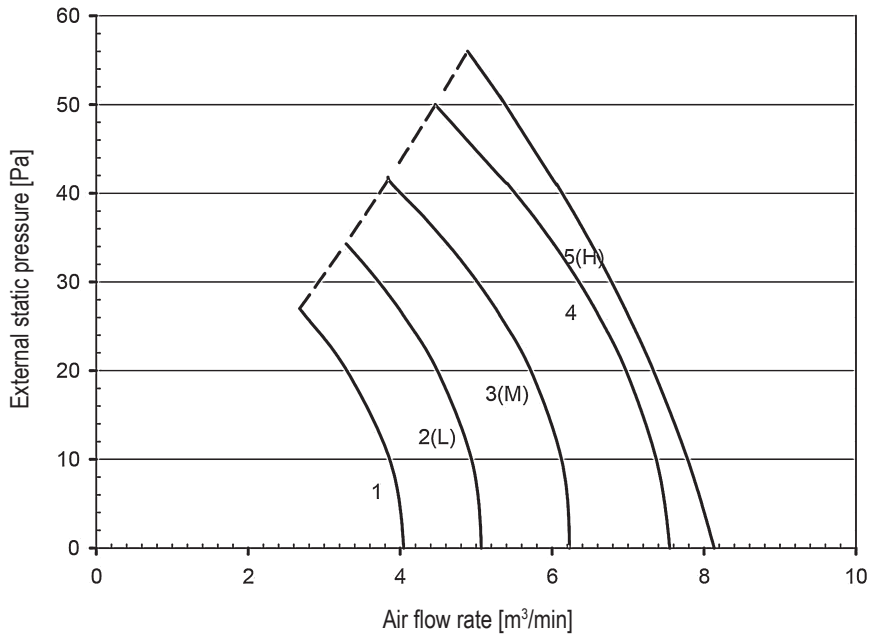
10 Fan characteristics

10 - 1 Fan Characteristics

10

FWE05DAFN5V3(L-R-S-T)
FWE05DATN5V3(L-R-S-T)

FWE05DA(F/T)N5V3(L/R/S/T)



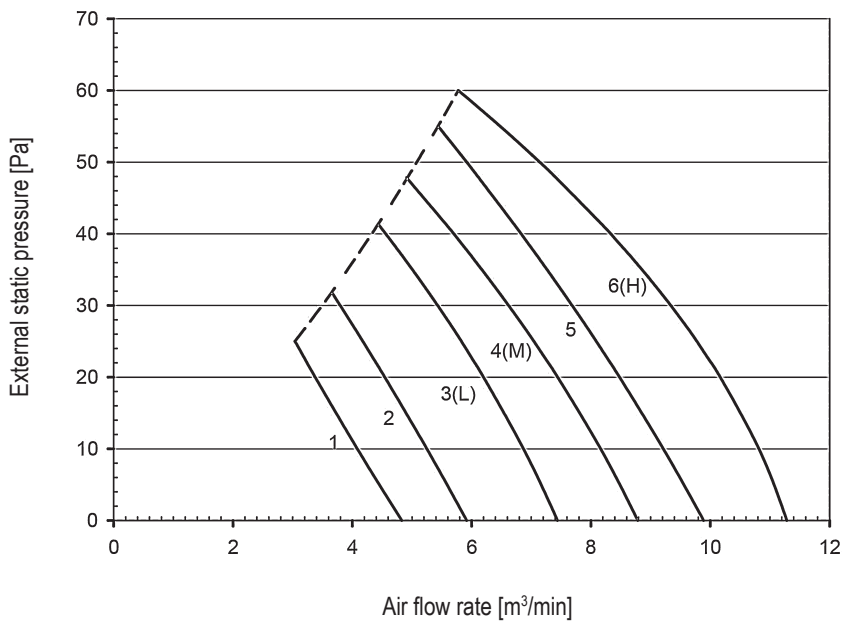
NOTES

1. The fan characteristics shown are in "fan only" mode.
2. Air temperature condition: 20°C DB, 15°C WB (RH 59%).
3. Power supply condition: 50Hz 230V.

4D122212A

FWE06DAFN5V3(L-R-S-T)
FWE06DATN5V3(L-R-S-T)

FWE06DA(F/T)N5V3(L/R/S/T)



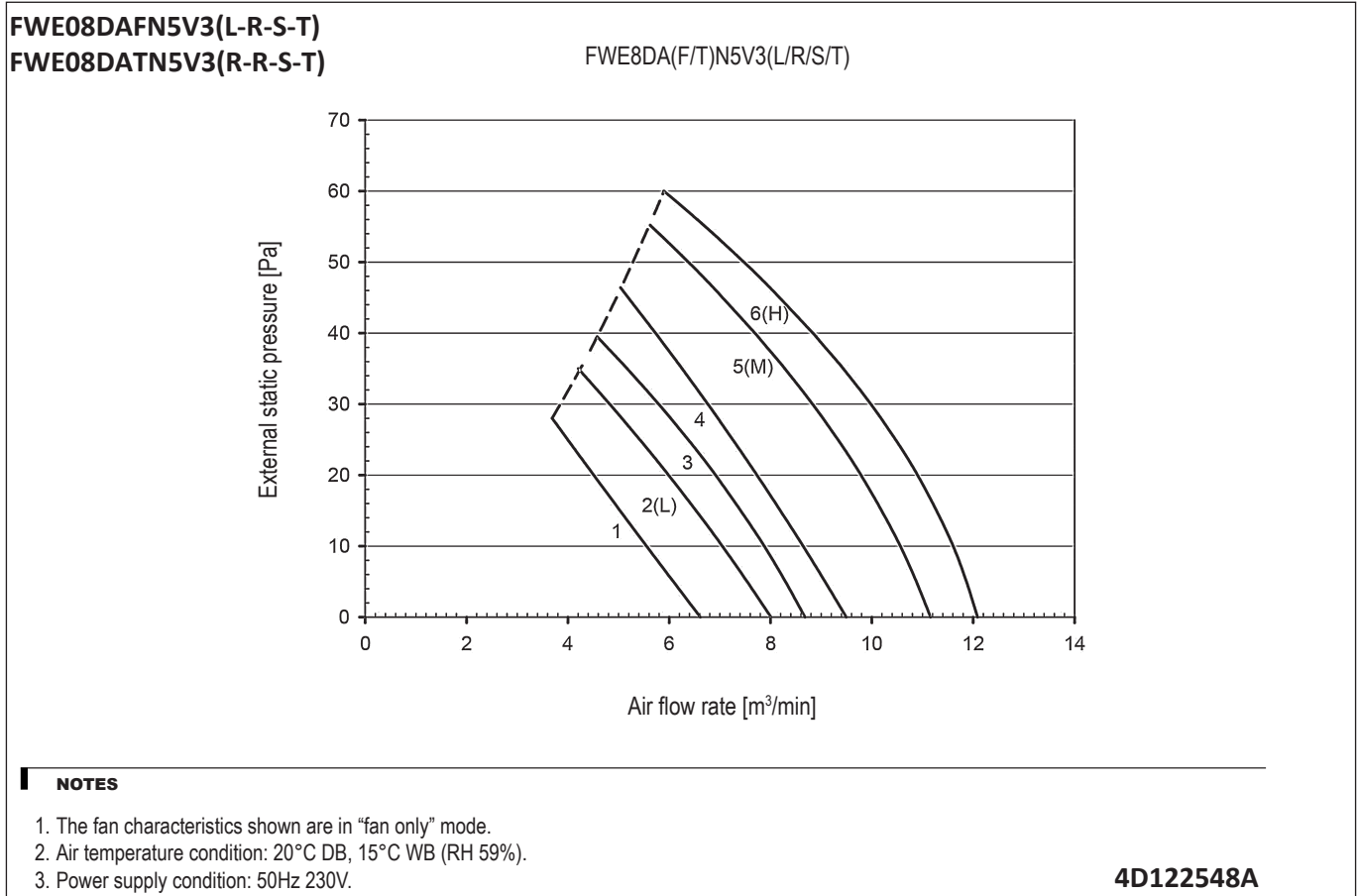
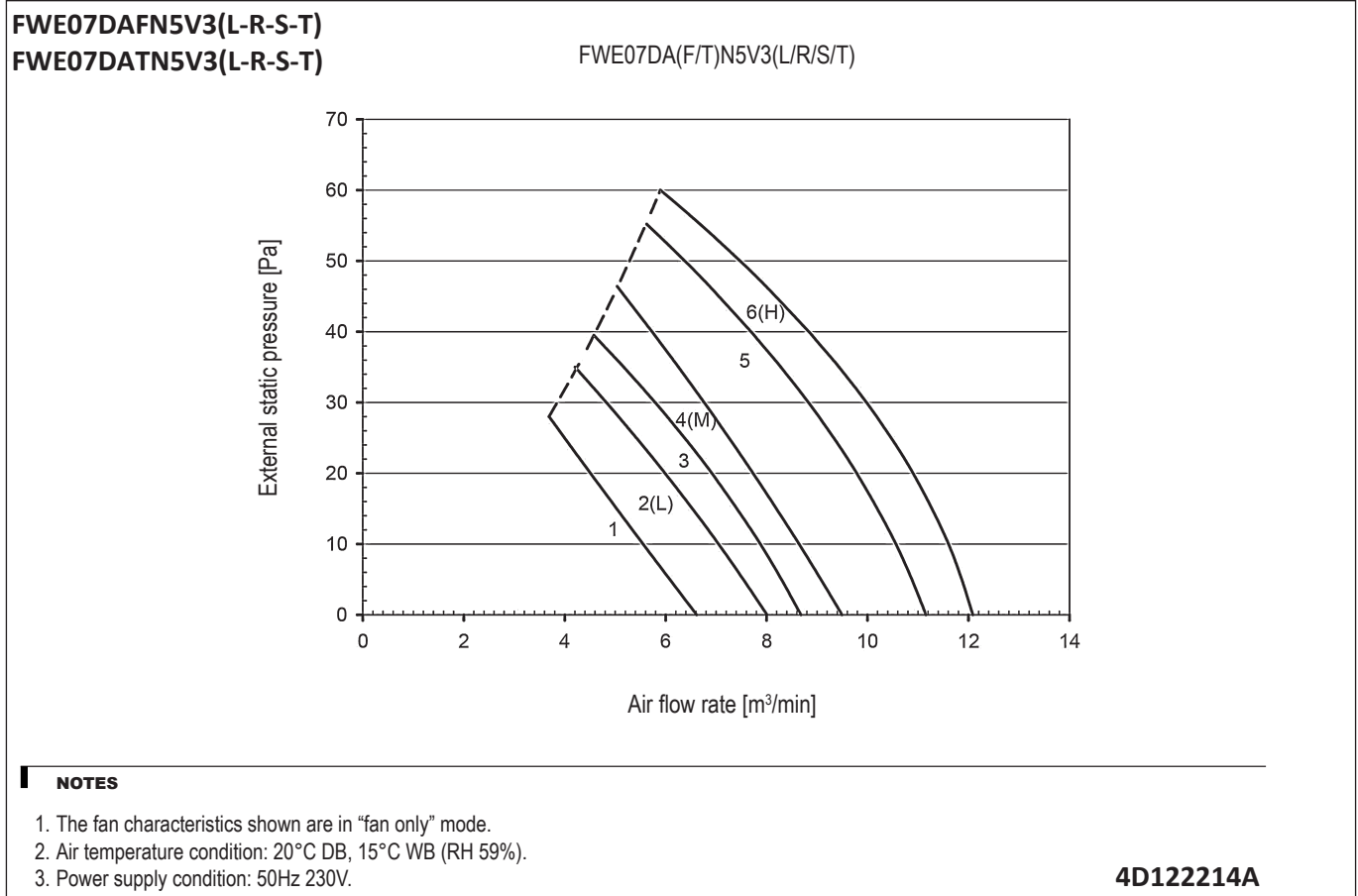
NOTES

1. The fan characteristics shown are in "fan only" mode.
2. Air temperature condition: 20°C DB, 15°C WB (RH 59%).
3. Power supply condition: 50Hz 230V.

4D122213A

10 Fan characteristics

10 - 1 Fan Characteristics



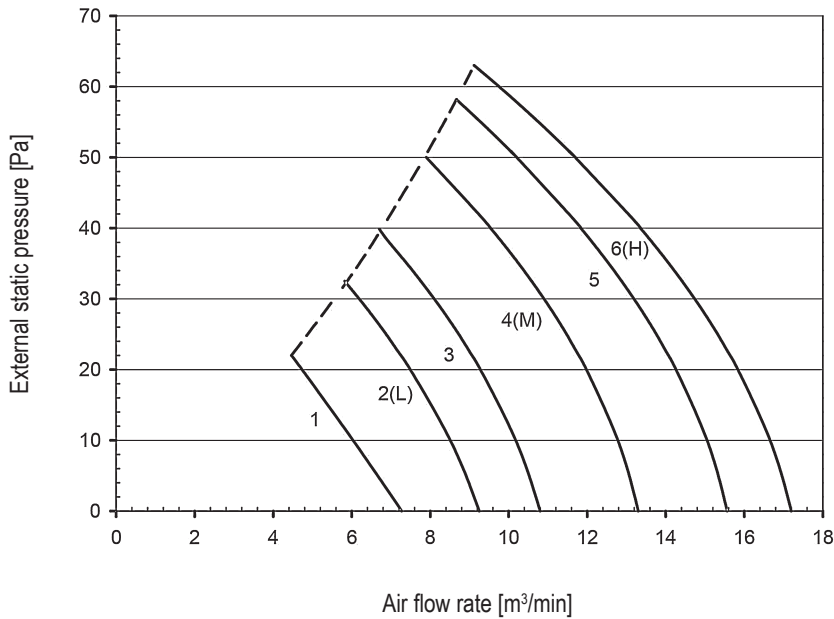
10 Fan characteristics

10 - 1 Fan Characteristics

10

FWE10DAFN5V(L-R-S-T)
FWE10DATN5V(L-R-S-T)

FWE10DA(F/T)N5V3(L/R/S/T)



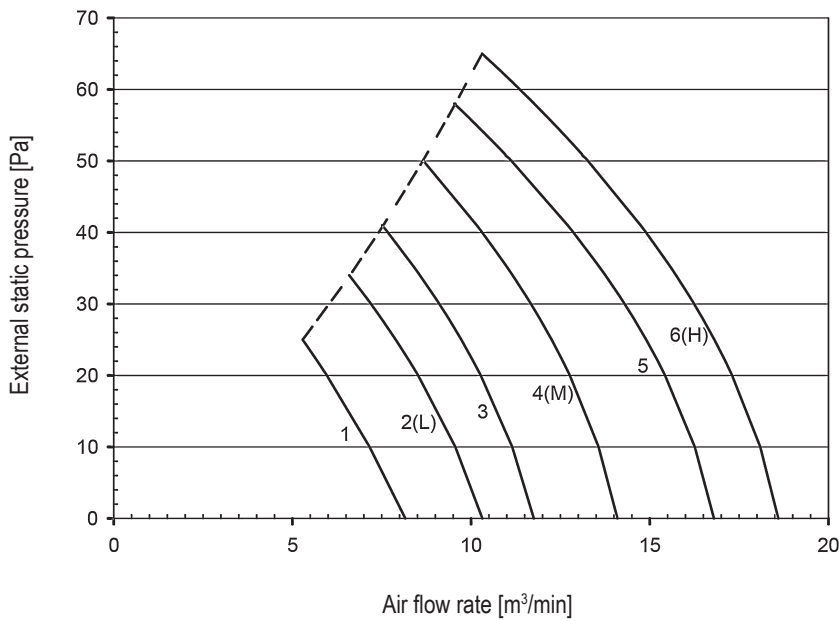
NOTES

1. The fan characteristics shown are in "fan only" mode.
2. Air temperature condition: 20°C DB, 15°C WB (RH 59%).
3. Power supply condition: 50Hz 230V.

4D122215A

FWE11DAFN5V3(L-R-S-T)
FWE11DATN5V3(L-R-S-T)

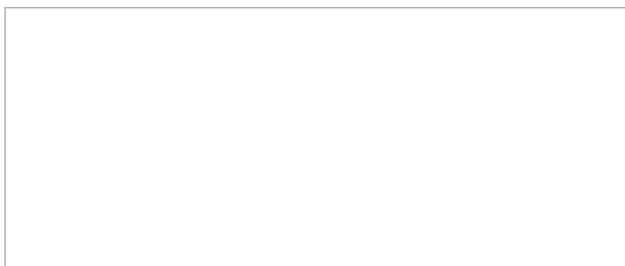
FWE11DA(F/T)N5V3(L/R/S/T)



NOTES

1. The fan characteristics shown are in "fan only" mode.
2. Air temperature condition: 20°C DB, 15°C WB (RH 59%).
3. Power supply condition: 50Hz 230V.

4D122216A



EEEDEN22

05/2022



The present publication is drawn up by way of information only and does not constitute an offer binding upon Daikin Europe N.V. / Daikin Central Europe HandelsGmbH. Daikin Europe N.V. / Daikin Central Europe HandelsGmbH have compiled the content of this publication to the best of their knowledge. No express or implied warranty is given for the completeness, accuracy, reliability or fitness for particular purpose of its content and the products and services presented therein. Specifications are subject to change without prior notice. Daikin Europe N.V. / Daikin Central Europe HandelsGmbH explicitly rejects any liability for any direct or indirect damage, in the broadest sense, arising from or related to the use and/or interpretation of this publication. All content is copyrighted by Daikin Europe N.V.