

Concealed flexi type unit with low ESP

Technical Data

FWE-DAFN5V3-L /
FWE-DAFN5V3-R /
FWE-DAFN5V3-S /
FWE-DAFN5V3-T

FWE03DAFN5V3-L
FWE04DAFN5V3-L
FWE05DAFN5V3-L
FWE06DAFN5V3-L
FWE07DAFN5V3-L
FWE08DAFN5V3-L
FWE10DAFN5V3-L
FWE11DAFN5V3-L
FWE03DAFN5V3-R
FWE04DAFN5V3-R
FWE05DAFN5V3-R
FWE06DAFN5V3-R
FWE07DAFN5V3-R
FWE08DAFN5V3-R
FWE10DAFN5V3-R
FWE11DAFN5V3-R
FWE03DAFN5V3-S
FWE04DAFN5V3-S
FWE05DAFN5V3-S
FWE06DAFN5V3-S
FWE07DAFN5V3-S
FWE08DAFN5V3-S
FWE10DAFN5V3-S
FWE11DAFN5V3-S
FWE03DAFN5V3-T
FWE04DAFN5V3-T
FWE05DAFN5V3-T
FWE06DAFN5V3-T
FWE07DAFN5V3-T
FWE08DAFN5V3-T
FWE10DAFN5V3-T
FWE11DAFN5V3-T



TABLE OF CONTENTS

FWE-DAFN5V3-L / FWE-DAFN5V3-R / FWE-DAFN5V3-S / FWE-DAFN5V3-T

1	Features	4
	FWE-DAFN5V3-L	4
	FWE-DAFN5V3-R	5
	FWE-DAFN5V3-S	6
	FWE-DAFN5V3-T	7
2	Specifications	8
3	Nomenclature	28
4	Electrical data	29
5	Options	30
6	Capacity tables	31
	Cooling Capacity Tables	31
	Heating Capacity Tables	34
7	Dimensional drawings	35
8	Wiring diagrams	36
	Wiring Diagrams - Single Phase	36
9	Sound data	37
	Sound Power Spectrum	37
10	Fan characteristics	45

1 Features

1 - 1 FWE-DAFN5V3-L

AC fan motor unit for horizontal or vertical concealed mounting

1

- › Opposite water and electric connection: Left water connection and right electric connection
- › Low unit casing height of 200mm
- › Sirocco Fan leading to low noise operation
- › Open control
- › Multiple factory mounted valve combinations
- › Increased flexibility of capacity setting in the field
- › The air filter can easily be removed for cleaning



1 Features

1 - 2 FWE-DAFN5V3-R

AC fan motor unit for horizontal or vertical concealed mounting

- › Opposite water and electric connection: Right water connection and left electric connection
- › Low unit casing height of 200mm
- › Sirocco Fan leading to low noise operation
- › Open control
- › Multiple factory mounted valve combinations
- › Increased flexibility of capacity setting in the field
- › The air filter can easily be removed for cleaning



1 Features

1 - 3 FWE-DAFN5V3-S

AC fan motor unit for horizontal or vertical concealed mounting

1

- › Same side water and electric connection: Left water connection and left electric connection
- › Low unit casing height of 200mm
- › Sirocco Fan leading to low noise operation
- › Open control
- › Multiple factory mounted valve combinations
- › Increased flexibility of capacity setting in the field
- › The air filter can easily be removed for cleaning



1 Features

1 - 4 FWE-DAFN5V3-T

AC fan motor unit for horizontal or vertical concealed mounting

- › Same side water and electric connection: Right water connection and right electric connection
- › Low unit casing height of 200mm
- › Sirocco Fan leading to low noise operation
- › Open control
- › Multiple factory mounted valve combinations
- › Increased flexibility of capacity setting in the field
- › The air filter can easily be removed for cleaning



2 Specifications

2

Technical specifications				FWE03DAFN5V3-L	FWE04DAFN5V3-L	FWE05DAFN5V3-L	FWE06DAFN5V3-L
Cooling capacity (standard conditions)	Latent capacity 4-pipe	High	kW	0.320	0.350	0.440	0.500
		Super high	kW	0.350	0.370	0.470	0.560
	Sensible capacity 4-pipe	Fan speed 1	kW	1.00	0.99	1.09	1.02
			kW	1.16	1.15	1.35	1.29
		Fan speed 2	kW	1.31	1.34	1.64	
			kW	1.46	1.55	2.02	1.97
		Fan speed 3	kW	1.59	1.69	2.11	2.30
			kW		-		2.56
		Fan speed 4	kW	1.00	1.15	1.35	1.64
			kW	1.31	1.34	1.64	1.97
		Fan speed 5	kW	1.59	1.69	2.11	2.56
			kW				
	Total capacity 4-pipe	Fan speed 1	kW	1.22	1.21	1.33	1.24
			kW	1.41	1.40	1.64	1.57
		Fan speed 2	kW	1.60	1.64	2.00	
			kW	1.78	1.90	2.46	2.40
		Fan speed 3	kW	1.94	2.06	2.58	2.80
			kW		-		3.12
		Fan speed 4	kW	1.22	1.40	1.64	2.00
			kW	1.60	1.64	2.00	2.40
Fan speed 5		kW	1.94	2.06	2.58	3.12	
		kW					
Heating capacity (standard conditions)	Capacity 4-pipe	Fan speed 1	kW	1.47	2.11	2.16	1.91
		Fan speed 2	kW	1.64	2.23	2.36	2.23
	Fan speed 3	kW	1.81	2.36	2.58	2.69	
		kW	1.96	2.50	2.83	3.09	
	Fan speed 4	kW	2.11	2.61	2.94	3.42	
		kW		-		3.83	
	Fan speed 5	kW	1.47	2.23	2.36	2.69	
		kW	1.81	2.36	2.58	3.09	
	Fan speed 6	kW	2.11	2.61	2.94	3.83	
		kW					
Power input	Fan speed 1	kW		0.026		0.039	
		kW	0.027	0.028	0.029	0.040	
	Fan speed 2	kW		0.029		0.043	
		kW		0.031		0.045	
	Fan speed 3	kW	0.033	0.032	0.039	0.047	
		kW		-		0.062	
	Fan speed 4	kW	0.026	0.028	0.029	0.043	
kW			0.029		0.045		
Fan speed 5	kW	0.033	0.032	0.039	0.062		
	kW						
Power input	Med.	kW		0.029		0.045	
	High	kW	0.033	0.032	0.039	0.062	
Dimensions	Unit	Height	mm	200			
		Width	mm	795		995	
		Depth	mm	610			
	Packed unit	Height	mm	205			
		Width	mm	925		1,125	
		Depth	mm	745			
Weight	Unit	kg	18.0	19.0	22.5		
	Packed unit	kg	20.5	21.5	25.5		
Casing	Colour		Metal				
	Material		Galvanised sheet metal				
Heat exchanger	Length	mm	490			690	
		mm	2		3		
	Row step	Quantity	6		4		
	Fin	Type	ML fin (Multi louver)				
	Tube material		Seamless copper				
	Tube type		ø7 Smooth tube				
	Tube thickness	mm	0.32				
Air filter	Type		Plastic Frame / PP Filter Net (G1)				
	Quantity	pc	2		3		

2 Specifications

Technical specifications				FWE03DAFN5V3-L	FWE04DAFN5V3-L	FWE05DAFN5V3-L	FWE06DAFN5V3-L
Fan	Type	Sirocco fan					
	Quantity	2					
	Air flow rate	Fan speed 1	m ³ /h	235	227	243	290
		Fan speed 2	m ³ /h	280	263	304	355
		Fan speed 3	m ³ /h	326	306	374	446
		Fan speed 4	m ³ /h	365	350	453	527
		Fan speed 5	m ³ /h	407	385	488	593
		Fan speed 6	m ³ /h	-	-	-	677
		Low	m ³ /h	235	263	304	446
		Medium	m ³ /h	326	306	374	527
		High	m ³ /h	407	385	488	677
		Available static pressure	Fan speed 1	Pa	27		25
	Fan speed 2		Pa	34	33	32	
	Fan speed 3		Pa	41		40	41
Fan speed 4	Pa		47	48	50	48	
Fan speed 5	Pa		55	57	55		
Fan	Available static pressure	Fan speed 6	Pa	-		60	
		Low	Pa	27	33	32	41
	Medium	Pa	41		40	48	
		High	Pa	55	57	55	60
Fan motor	Model	YF110-10-4S3		YF110-12-4S35	YF110-15-4S22		
	Type	AC Motor					
	Index of Protection	20					
	Insulation grade	B					
	Poles	4					
Insulation material	Class 0 (NBR Foam, Melamine Foam)						
Total sound power level	Fan speed 1	dB(A)	32.0			30.0	
	Fan speed 2	dB(A)	35.0	34.0	37.0	34.0	
	Fan speed 3	dB(A)	39.0	38.0	41.0	39.0	
	Fan speed 4	dB(A)	42.0	-	46.0	44.0	
	Fan speed 5	dB(A)	45.0	44.0	50.0	46.0	
	Fan speed 6	dB(A)	-	-	-	50.0	
	Low	dB(A)	32.0	34.0	37.0	39.0	
	Medium	dB(A)	39.0	38.0	41.0	44.0	
	High	dB(A)	45.0	44.0	50.0		
	Sound pressure level	Fan speed 1	dB(A)	21.0	22.0		20.0
Fan speed 2		dB(A)	25.0	23.0	27.0	24.0	
Fan speed 3		dB(A)	28.0	27.0	31.0	29.0	
Fan speed 4		dB(A)	31.0	-	36.0	34.0	
Fan speed 5		dB(A)	35.0	34.0	40.0	36.0	
Fan speed 6		dB(A)	-	-	-	40.0	
Low		dB(A)	21.0	23.0	27.0	29.0	
Medium		dB(A)	28.0	27.0	31.0	34.0	
High		dB(A)	35.0	34.0	40.0		
Water flow		Cooling	Fan speed 1	l/h	210	209	228
	Fan speed 2		l/h	243	241	282	268
	Fan speed 3		l/h	275	282	343	345
	Fan speed 4		l/h	303	321	413	412
	Fan speed 5		l/h	334	354	443	468
	Fan speed 6		l/h	-	-	-	536
	Low		l/h	210	241	282	345
	Medium		l/h	275	282	343	412
	High		l/h	334	354	443	536

2 Specifications

2

Technical specifications				FWE03DAFN5V3-L	FWE04DAFN5V3-L	FWE05DAFN5V3-L	FWE06DAFN5V3-L	
Water flow	Heating	Fan speed 1	l/h	126	182	186	164	
		Fan speed 2	l/h	141	192	203	192	
		Fan speed 3	l/h	156	203	222	231	
		Fan speed 4	l/h	168	215	243	266	
		Fan speed 5	l/h	182	225	253	294	
		Fan speed 6	l/h		-		330	
		High	l/h	182	225	253	330	
		Low	l/h	126	192	203	231	
		Medium	l/h	156	203	222	266	
	Water pressure drop	Cooling	Fan speed 1	kPa	6.05	4.00	3.00	1.00
			Fan speed 2	kPa	8.00	5.00	5.53	2.00
			Fan speed 3	kPa	9.49	6.61	8.40	3.23
			Fan speed 4	kPa	11.00	9.00	13.00	4.90
			Fan speed 5	kPa	13.18	10.09	14.35	7.00
			Fan speed 6	kPa		-		8.85
		Low	kPa	6.05	5.00	5.53	3.23	
		Medium	kPa	9.49	6.61	8.40	4.90	
		High	kPa	13.18	10.09	14.35	8.85	
		Heating	Fan speed 1	kPa	11.78		7.00	
Fan speed 2	kPa		14.00	7.50		8.18	4.00	
Fan speed 3	kPa		17.20	8.22		9.41	6.00	
Fan speed 4	kPa		20.00	9.00		11.00	7.94	
Fan speed 5	kPa		22.87	9.62		11.58	10.00	
Fan speed 6	kPa			-			12.25	
Low	kPa		11.78	7.50		8.18	6.00	
Medium	kPa	17.20	8.22		9.41	7.94		
High	kPa	22.87	9.62		11.58	12.25		
Allowed water temperature	Cooling	Min.	°C			5		
		Max.	°C			90.0		
	Heating	Min.	°C			5.00		
		Max.	°C			90.000		
Piping connections	Water	Inlet				3/4"		
		Outlet				3/4"		
	Drain	OD	mm				17.3	

Technical specifications				FWE07DAFN5V3-L	FWE08DAFN5V3-L	FWE10DAFN5V3-L	FWE11DAFN5V3-L	
Cooling capacity (standard conditions)	Latent capacity	High	kW	0.590	0.660	0.880	0.940	
		Super high	kW	0.610	0.710	0.940	1.000	
	Sensible capacity 4-pipe	Fan speed 1	kW	1.70	1.95	2.11	2.31	
		Fan speed 2	kW	1.98	2.27	2.54	2.78	
		Fan speed 3	kW	2.14	2.46	2.93	3.14	
		Fan speed 4	kW	2.28	2.66	3.43	3.61	
		Fan speed 5	kW	2.67	3.00	4.03	4.31	
		Fan speed 6	kW	2.81	3.21	4.28	4.59	
		Low	kW	1.98	2.27	2.54	2.78	
		Medium	kW	2.28	3.00	3.43	3.61	
		High	kW	2.81	3.21	4.28	4.59	
	Total capacity 4-pipe	Fan speed 1	kW	2.07	2.38	2.57	2.81	
		Fan speed 2	kW	2.42	2.77	3.10	3.39	
		Fan speed 3	kW	2.61	3.00	3.57	3.83	
		Fan speed 4	kW	2.79	3.24	4.19	4.40	
		Fan speed 5	kW	3.26	3.66	4.91	5.25	
		Fan speed 6	kW	3.42	3.92	5.22	5.59	
		Low	kW	2.42	2.77	3.10	3.39	
		Medium	kW	2.79	3.66	4.19	4.40	
High		kW	3.42	3.92	5.22	5.59		
Heating capacity (standard conditions)	Capacity 4-pipe	Fan speed 1	kW		3.22		3.39	3.60
		Fan speed 2	kW		3.57		3.87	4.14
		Fan speed 3	kW		3.73		4.26	4.49
		Fan speed 4	kW		3.93		4.87	5.07
		Fan speed 5	kW		4.34		5.43	5.73
		Fan speed 6	kW		4.57		5.83	6.18
		Low	kW		3.57		3.87	4.14
		Medium	kW	3.93		4.34	4.87	5.07
		High	kW		4.57		5.83	6.18

2 Specifications

Technical specifications			FWE07DAFN5V3-L	FWE08DAFN5V3-L	FWE10DAFN5V3-L	FWE11DAFN5V3-L
Power input	Fan speed 1	kW	0.029		0.026	0.028
	Fan speed 2	kW	0.037		0.036	0.039
	Fan speed 3	kW	0.041		0.045	0.047
	Fan speed 4	kW	0.046		0.061	0.064
	Fan speed 5	kW	0.057		0.081	0.086
	Fan speed 6	kW	0.067		0.104	0.110
	Low	kW	0.037		0.036	0.039
Power input	Med.	kW	0.046	0.057	0.061	0.064
	High	kW	0.067		0.104	0.110
Dimensions	Unit	Height	200			
		Width	1,200			
		Depth	610			
	Packed unit	Height	205			
		Width	1,325			
		Depth	745			
Weight	Unit	kg	26.0			
	Packed unit	kg	30.0			
Casing	Colour		Metal			
	Material		Galvanised sheet metal			
Heat exchanger	Length	mm	890			
	Rows	Quantity	3			
	Row step	Quantity	4			
	Fin	Type	ML fin (Multi louver)			
	Tube material		Seamless copper			
	Tube type		ø7 Smooth tube			
	Tube thickness	mm	0.32			
Air filter	Type		Plastic Frame / PP Filter Net (G1)			
	Quantity	pc	3			
Fan	Type		Sirocco fan			
	Quantity		4			
Air flow rate	Fan speed 1	m ³ /h	397		436	489
		m ³ /h	481		555	619
	Fan speed 2	m ³ /h	521		648	705
		m ³ /h	570		798	846
	Fan speed 3	m ³ /h	669		934	1,008
		m ³ /h	725		1,032	1,116
	Fan speed 4	m ³ /h	481		555	619
		m ³ /h	570		798	846
	Fan speed 5	m ³ /h	725		1,032	1,116
		m ³ /h	725		1,032	1,116
	Available static pressure	Fan speed 1	Pa	28		22
Fan speed 2		Pa	34		32	34
Fan	Fan speed 3	Pa	40			41
		Pa	46		49	
	Fan speed 4	Pa	55		59	58
		Pa	60		63	65
	Available static pressure	Low	Pa	34		32
Medium		Pa	46	55		49
Fan	High	Pa	60		63	65
	Pa				63	65
Fan motor	Model		YF110-18-4S44		YF110-52-4S40	YF110-56-4S14
	Type		AC Motor			
	Index of Protection		20			
	Insulation grade		B			
	Poles		4			
Insulation material		Class 0 (NBR Foam, Melamine Foam)				
Total sound power level	Fan speed 1	dB(A)	31.0		38.0	40.0
		dB(A)	34.0		43.0	44.0
	Fan speed 2	dB(A)	38.0		47.0	
		dB(A)	42.0		51.0	52.0
	Fan speed 3	dB(A)	46.0		54.0	56.0
		dB(A)	50.0		57.0	59.0
	Fan speed 4	dB(A)	34.0		43.0	44.0
		dB(A)	42.0	46.0	51.0	52.0
	Fan speed 5	dB(A)	50.0		57.0	59.0
		dB(A)	50.0		57.0	59.0
	Sound pressure level	Fan speed 1	dB(A)	21.0		27.0
dB(A)			24.0		33.0	34.0
Fan speed 2		dB(A)	27.0		37.0	
		dB(A)	32.0		41.0	42.0
Fan speed 3		dB(A)	36.0		44.0	46.0
		dB(A)	40.0		47.0	49.0
Fan speed 4		dB(A)	24.0		33.0	34.0
		dB(A)	32.0	36.0	41.0	42.0
Fan speed 5		dB(A)	32.0		41.0	42.0
		dB(A)	40.0		47.0	49.0
Fan speed 6		dB(A)	40.0		47.0	49.0
	dB(A)	40.0		47.0	49.0	

2 Specifications

2

Technical specifications				FWE07DAFN5V3-L	FWE08DAFN5V3-L	FWE10DAFN5V3-L	FWE11DAFN5V3-L	
Water flow	Cooling	Fan speed 1	l/h	354	409	442	483	
		Fan speed 2	l/h	415	477	534	583	
		Fan speed 3	l/h	444	509	605	650	
		Fan speed 4	l/h	479	549	720	757	
		Fan speed 5	l/h	551	630	824	881	
		Fan speed 6	l/h	589	674	897	962	
		Low	l/h	415	477	534	583	
		Medium	l/h	479	630	720	757	
		High	l/h	589	674	897	962	
Water flow	Heating	Fan speed 1	l/h		277	291	310	
		Fan speed 2	l/h		307	333	356	
		Fan speed 3	l/h		321	366	386	
		Fan speed 4	l/h		338	419	436	
		Fan speed 5	l/h		374	467	493	
		Fan speed 6	l/h		393	502	531	
		High	l/h		393	502	531	
		Low	l/h		307	333	356	
		Medium	l/h	338	374	419	436	
	Water pressure drop	Cooling	Fan speed 1	kPa	4.00	9.00	8.00	9.00
			Fan speed 2	kPa	5.96	10.90	11.07	13.00
			Fan speed 3	kPa	7.00	12.00	14.00	16.00
			Fan speed 4	kPa	8.36	14.00	19.23	21.12
			Fan speed 5	kPa	12.00	16.74	26.00	29.00
			Fan speed 6	kPa	13.48	18.67	29.00	33.09
Low			kPa	5.96	10.90	11.07	13.00	
Medium			kPa	8.36	16.74	19.23	21.12	
High			kPa	13.48	18.67	29.00	33.09	
Heating	Heating	Fan speed 1	kPa		5.00	6.00	7.00	
		Fan speed 2	kPa	6.42	6.40	7.30	8.07	
		Fan speed 3	kPa		7.00	8.00	9.00	
		Fan speed 4	kPa	7.46	7.00	10.47	11.16	
		Fan speed 5	kPa	9.00	8.72	12.00	14.00	
		Fan speed 6	kPa		9.46	14.03	15.43	
		Low	kPa	6.42	6.40	7.30	8.07	
		Medium	kPa	7.46	8.72	10.47	11.16	
		High	kPa		9.46	14.03	15.43	
Allowed water temperature	Cooling	Min.	°C			5		
		Max.	°C			90.0		
	Heating	Min.	°C			5.00		
		Max.	°C			90.000		
Piping connections	Water	Inlet				3/4"		
		Outlet				3/4"		
	Drain	OD	mm				17.3	

Standard accessories: Installation manual; Quantity: 1;

Electrical specifications				FWE03DAFN5V3-L	FWE04DAFN5V3-L	FWE05DAFN5V3-L	FWE06DAFN5V3-L
Power supply	Type			230 / 1 / 50			
	Phase			1~			
	Frequency	Hz		50			
	Voltage	V		230			

Electrical specifications				FWE07DAFN5V3-L	FWE08DAFN5V3-L	FWE10DAFN5V3-L	FWE11DAFN5V3-L
Power supply	Type			230 / 1 / 50			
	Phase			1~			
	Frequency	Hz		50			
	Voltage	V		230			

Inlet/outlet water temperature 7/12 °C; inlet air temperature 27°C DB 19°C WB |

Heating: indoor temp. 20°CDB, 15°CWB; entering water temp. 45°C, water temperature drop 5K. |

Heating: indoor temp. 20°CDB, 15°CWB; entering water temp. 65°C, water temperature drop 10K.

2 Specifications

Technical specifications				FWE03DAFN5V3-R	FWE04DAFN5V3-R	FWE05DAFN5V3-R	FWE06DAFN5V3-R	
Cooling capacity (standard conditions)	Latent capacity	High	kW	0.320	0.350	0.440	0.500	
		Super high	kW	0.350	0.370	0.470	0.560	
	Sensible capacity	4-pipe	Fan speed 1	kW	1.00	0.99	1.09	1.02
			Fan speed 2	kW	1.16	1.15	1.35	1.29
			Fan speed 3	kW	1.31	1.34	1.64	
			Fan speed 4	kW	1.46	1.55	2.02	1.97
			Fan speed 5	kW	1.59	1.69	2.11	2.30
			Fan speed 6	kW		-		2.56
		Total capacity	Low	kW	1.00	1.15	1.35	1.64
			Medium	kW	1.31	1.34	1.64	1.97
			High	kW	1.59	1.69	2.11	2.56
			4-pipe	Fan speed 1	kW	1.22	1.21	1.33
	Fan speed 2	kW		1.41	1.40	1.64	1.57	
	Fan speed 3	kW		1.60	1.64	2.00		
	Fan speed 4	kW		1.78	1.90	2.46	2.40	
	Fan speed 5	kW		1.94	2.06	2.58	2.80	
	Fan speed 6	kW			-		3.12	
	Heating capacity (standard conditions)	Capacity	Low	kW	1.22	1.40	1.64	2.00
			Medium	kW	1.60	1.64	2.00	2.40
			High	kW	1.94	2.06	2.58	3.12
4-pipe			Fan speed 1	kW	1.47	2.11	2.16	1.91
			Fan speed 2	kW	1.64	2.23	2.36	2.23
			Fan speed 3	kW	1.81	2.36	2.58	2.69
		Fan speed 4	kW	1.96	2.50	2.83	3.09	
Fan speed 5		kW	2.11	2.61	2.94	3.42		
Fan speed 6		kW		-		3.83		
Power input		Low	kW	1.47	2.23	2.36	2.69	
	Medium	kW	1.81	2.36	2.58	3.09		
	High	kW	2.11	2.61	2.94	3.83		
	Fan speed 1	kW		0.026		0.039		
	Fan speed 2	kW	0.027	0.028	0.029	0.040		
	Fan speed 3	kW		0.029	0.032	0.043		
Power input	Fan speed 4	kW		0.031	0.035	0.045		
	Fan speed 5	kW	0.033	0.032	0.039	0.047		
Dimensions	Unit	Fan speed 6	kW		-		0.062	
		Low	kW	0.026	0.028	0.029	0.043	
		High	kW	0.033	0.032	0.039	0.062	
	Packed unit	Med.	kW		0.029	0.032	0.045	
		Height	mm	200				
		Width	mm	795		995		
Weight	Depth	mm	610					
	Height	mm	205					
	Width	mm	925		1,125			
Casing	Depth	mm	745					
	Colour		Metal					
	Material		Galvanised sheet metal					
Heat exchanger	Length	mm	490		690			
	Rows	Quantity	2		3			
	Row step	Quantity	6		4			
	Fin	Type	ML fin (Multi louver)					
	Tube material		Seamless copper					
	Tube type		ø7 Smooth tube					
Air filter	Tube thickness	mm	0.32					
	Type		Plastic Frame / PP Filter Net (G1)					
	Quantity	pc	2		3			

2 Specifications

Technical specifications			FWE03DAFN5V3-R	FWE04DAFN5V3-R	FWE05DAFN5V3-R	FWE06DAFN5V3-R	
Fan	Type		Sirocco fan				
	Quantity		2			3	
	Air flow rate	Fan speed 1	m ³ /h	235	227	243	290
		Fan speed 2	m ³ /h	280	263	304	355
		Fan speed 3	m ³ /h	326	306	374	446
		Fan speed 4	m ³ /h	365	350	453	527
		Fan speed 5	m ³ /h	407	385	488	593
		Fan speed 6	m ³ /h		-		677
	Available static pressure	Low	m ³ /h	235	263	304	446
		Medium	m ³ /h	326	306	374	527
		High	m ³ /h	407	385	488	677
		Fan speed 1	Pa		27		25
	Fan static pressure	Fan speed 2	Pa	34	33		32
		Fan speed 3	Pa		41	40	41
		Fan speed 4	Pa	47	48	50	48
Fan speed 5		Pa	55	57	55		
Fan speed 6		Pa		-		60	
Fan available static pressure	Low	Pa	27	33	32	41	
	Medium	Pa		41	40	48	
	High	Pa	55	57	55	60	
Fan motor	Model		YF110-10-4S3		YF110-12-4S35	YF110-15-4S22	
	Type		AC Motor				
	Index of Protection		20				
	Insulation grade		B				
	Poles		4				
Insulation material			Class 0 (NBR Foam, Melamine Foam)				
Total sound power level	Fan speed 1	dB(A)	32.0			30.0	
	Fan speed 2	dB(A)	35.0	34.0	37.0	34.0	
	Fan speed 3	dB(A)	39.0	38.0	41.0	39.0	
	Fan speed 4	dB(A)		42.0	46.0	44.0	
	Fan speed 5	dB(A)	45.0	44.0	50.0	46.0	
	Fan speed 6	dB(A)		-		50.0	
	Low	dB(A)	32.0	34.0	37.0	39.0	
	Medium	dB(A)	39.0	38.0	41.0	44.0	
	High	dB(A)	45.0	44.0		50.0	
Sound pressure level	Fan speed 1	dB(A)	21.0	22.0		20.0	
	Fan speed 2	dB(A)	25.0	23.0	27.0	24.0	
	Fan speed 3	dB(A)	28.0	27.0	31.0	29.0	
	Fan speed 4	dB(A)		31.0	36.0	34.0	
	Fan speed 5	dB(A)	35.0	34.0	40.0	36.0	
	Fan speed 6	dB(A)		-		40.0	
	Low	dB(A)	21.0	23.0	27.0	29.0	
	Medium	dB(A)	28.0	27.0	31.0	34.0	
	High	dB(A)	35.0	34.0		40.0	
Water flow	Cooling	Fan speed 1	l/h	210	209	228	213
		Fan speed 2	l/h	243	241	282	268
		Fan speed 3	l/h	275	282	343	345
		Fan speed 4	l/h	303	321	413	412
		Fan speed 5	l/h	334	354	443	468
		Fan speed 6	l/h		-		536
	Available static pressure	Low	l/h	210	241	282	345
		Medium	l/h	275	282	343	412
		High	l/h	334	354	443	536

2 Specifications

Technical specifications				FWE03DAFN5V3-R	FWE04DAFN5V3-R	FWE05DAFN5V3-R	FWE06DAFN5V3-R		
Water flow	Heating	Fan speed 1	l/h	126	182	186	164		
		Fan speed 2	l/h	141	192	203	192		
		Fan speed 3	l/h	156	203	222	231		
		Fan speed 4	l/h	168	215	243	266		
		Fan speed 5	l/h	182	225	253	294		
		Fan speed 6	l/h		-		330		
		High	l/h	182	225	253	330		
	Water pressure drop	Cooling	Fan speed 1	kPa	6.05	4.00	3.00	1.00	
			Fan speed 2	kPa	8.00	5.00	5.53	2.00	
			Fan speed 3	kPa	9.49	6.61	8.40	3.23	
			Fan speed 4	kPa	11.00	9.00	13.00	4.90	
			Fan speed 5	kPa	13.18	10.09	14.35	7.00	
			Fan speed 6	kPa		-		8.85	
			Low	kPa	6.05	5.00	5.53	3.23	
Allowed water temperature	Heating	Medium	kPa	9.49	6.61	8.40	4.90		
		High	kPa	13.18	10.09	14.35	8.85		
		Heating	Fan speed 1	kPa	11.78	7.00		3.00	
			Fan speed 2	kPa	14.00	7.50	8.18	4.00	
			Fan speed 3	kPa	17.20	8.22	9.41	6.00	
			Fan speed 4	kPa	20.00	9.00	11.00	7.94	
			Fan speed 5	kPa	22.87	9.62	11.58	10.00	
	Fan speed 6		kPa		-		12.25		
	Low	kPa	11.78	7.50	8.18	6.00			
	Piping connections	Water	Inlet			3/4"			
			Outlet			3/4"			
		Drain	OD	mm			17.3		
			Min.	°C			5		
			Max.	°C			90.0		
Min.			°C			5.00			
Max.			°C			90.000			

Technical specifications				FWE07DAFN5V3-R	FWE08DAFN5V3-R	FWE10DAFN5V3-R	FWE11DAFN5V3-R
Cooling capacity (standard conditions)	Latent capacity	High	kW	0.590	0.660	0.880	0.940
		Super high	kW	0.610	0.710	0.940	1.000
	Sensible capacity 4-pipe	Fan speed 1	kW	1.70	1.95	2.11	2.31
		Fan speed 2	kW	1.98	2.27	2.54	2.78
		Fan speed 3	kW	2.14	2.46	2.93	3.14
		Fan speed 4	kW	2.28	2.66	3.43	3.61
		Fan speed 5	kW	2.67	3.00	4.03	4.31
		Fan speed 6	kW	2.81	3.21	4.28	4.59
		Low	kW	1.98	2.27	2.54	2.78
		Medium	kW	2.28	3.00	3.43	3.61
		High	kW	2.81	3.21	4.28	4.59
		Total capacity 4-pipe	Fan speed 1	kW	2.07	2.38	2.57
	Fan speed 2		kW	2.42	2.77	3.10	3.39
	Fan speed 3		kW	2.61	3.00	3.57	3.83
	Fan speed 4		kW	2.79	3.24	4.19	4.40
	Fan speed 5		kW	3.26	3.66	4.91	5.25
	Fan speed 6		kW	3.42	3.92	5.22	5.59
	Low		kW	2.42	2.77	3.10	3.39
	High		kW	2.79	3.66	4.19	4.40
Heating capacity (standard conditions)	Capacity 4-pipe	Fan speed 1	kW		3.22	3.39	3.60
		Fan speed 2	kW		3.57	3.87	4.14
		Fan speed 3	kW		3.73	4.26	4.49
		Fan speed 4	kW		3.93	4.87	5.07
		Fan speed 5	kW		4.34	5.43	5.73
		Fan speed 6	kW		4.57	5.83	6.18
		Low	kW		3.57	3.87	4.14
		Medium	kW	3.93	4.34	4.87	5.07
		High	kW		4.57	5.83	6.18

2 Specifications

Technical specifications			FWE07DAFN5V3-R	FWE08DAFN5V3-R	FWE10DAFN5V3-R	FWE11DAFN5V3-R	
Power input	Fan speed 1	kW	0.029		0.026	0.028	
	Fan speed 2	kW	0.037		0.036	0.039	
	Fan speed 3	kW	0.041		0.045	0.047	
	Fan speed 4	kW	0.046		0.061	0.064	
	Fan speed 5	kW	0.057		0.081	0.086	
	Fan speed 6	kW	0.067		0.104	0.110	
	Low	kW	0.037		0.036	0.039	
Power input	Med.	kW	0.046	0.057	0.061	0.064	
	High	kW	0.067		0.104	0.110	
Dimensions	Unit	Height	200				
		Width	1,200				
		Depth	610				
	Packed unit	Height	205				
		Width	1,325				
		Depth	745				
Weight	Unit	kg	26.0				
	Packed unit	kg	30.0				
Casing	Colour		Metal				
	Material		Galvanised sheet metal				
Heat exchanger	Length	mm	890				
	Rows	Quantity	3				
	Row step	Quantity	4				
	Fin	Type	ML fin (Multi louver)				
	Tube material		Seamless copper				
	Tube type		ø7 Smooth tube				
	Tube thickness	mm	0.32				
Air filter	Type		Plastic Frame / PP Filter Net (G1)				
	Quantity	pc	3				
Fan	Type		Sirocco fan				
	Quantity		4				
Air flow rate	Fan speed 1	m ³ /h	397		436	489	
		m ³ /h	481		555	619	
	Fan speed 2	m ³ /h	521		648	705	
		m ³ /h	570		798	846	
	Fan speed 3	m ³ /h	669		934	1,008	
		m ³ /h	725		1,032	1,116	
	Fan speed 4	m ³ /h	481		555	619	
		m ³ /h	570		798	846	
	Fan speed 5	m ³ /h	725		1,032	1,116	
		m ³ /h	725		1,032	1,116	
	Available static pressure	Fan speed 1	Pa	28		22	25
		Fan speed 2	Pa	34		32	34
	Fan	Fan speed 3	Pa	40			41
Pa			46		49		
Fan speed 4		Pa	55		59	58	
		Pa	60		63	65	
Available static pressure		Low	Pa	34		32	34
	Medium	Pa	46	55	32	49	
Fan	High	Pa	60		63	65	
	Pa		60		63	65	
Fan motor	Model		YF110-18-4S44		YF110-52-4S40	YF110-56-4S14	
	Type		AC Motor				
	Index of Protection		20				
	Insulation grade		B				
	Poles		4				
Insulation material		Class 0 (NBR Foam, Melamine Foam)					
Total sound power level	Fan speed 1	dB(A)	31.0		38.0	40.0	
		dB(A)	34.0		43.0	44.0	
	Fan speed 2	dB(A)	38.0		47.0		
		dB(A)	42.0		51.0	52.0	
	Fan speed 3	dB(A)	46.0		54.0	56.0	
		dB(A)	50.0		57.0	59.0	
	Fan speed 4	dB(A)	34.0		43.0	44.0	
		dB(A)	42.0	46.0	51.0	52.0	
	Fan speed 5	dB(A)	50.0		57.0	59.0	
		dB(A)	50.0		57.0	59.0	
	Sound pressure level	Fan speed 1	dB(A)	21.0		27.0	29.0
dB(A)			24.0		33.0	34.0	
Fan speed 2		dB(A)	27.0		37.0		
		dB(A)	32.0		41.0	42.0	
Fan speed 3		dB(A)	36.0		44.0	46.0	
		dB(A)	40.0		47.0	49.0	
Fan speed 4		dB(A)	24.0		33.0	34.0	
		dB(A)	32.0	36.0	41.0	42.0	
Fan speed 5		dB(A)	40.0		47.0	49.0	
		dB(A)	40.0		47.0	49.0	

2 Specifications

Technical specifications				FWE07DAFN5V3-R	FWE08DAFN5V3-R	FWE10DAFN5V3-R	FWE11DAFN5V3-R	
Water flow	Cooling	Fan speed 1	l/h	354	409	442	483	
		Fan speed 2	l/h	415	477	534	583	
		Fan speed 3	l/h	444	509	605	650	
		Fan speed 4	l/h	479	549	720	757	
		Fan speed 5	l/h	551	630	824	881	
		Fan speed 6	l/h	589	674	897	962	
		Low	l/h	415	477	534	583	
		Medium	l/h	479	630	720	757	
		High	l/h	589	674	897	962	
Water flow	Heating	Fan speed 1	l/h	277		291	310	
		Fan speed 2	l/h	307		333	356	
		Fan speed 3	l/h	321		366	386	
		Fan speed 4	l/h	338		419	436	
		Fan speed 5	l/h	374		467	493	
		Fan speed 6	l/h	393		502	531	
		High	l/h	393		502	531	
		Low	l/h	307		333	356	
		Medium	l/h	338	374	419	436	
	Water pressure drop	Cooling	Fan speed 1	kPa	4.00	9.00	8.00	9.00
			Fan speed 2	kPa	5.96	10.90	11.07	13.00
			Fan speed 3	kPa	7.00	12.00	14.00	16.00
			Fan speed 4	kPa	8.36	14.00	19.23	21.12
			Fan speed 5	kPa	12.00	16.74	26.00	29.00
			Fan speed 6	kPa	13.48	18.67	29.00	33.09
Low			kPa	5.96	10.90	11.07	13.00	
Medium			kPa	8.36	16.74	19.23	21.12	
High			kPa	13.48	18.67	29.00	33.09	
Heating	Fan speed 1	kPa	5.00		6.00	7.00		
	Fan speed 2	kPa	6.42	6.40	7.30	8.07		
	Fan speed 3	kPa	7.00		8.00	9.00		
	Fan speed 4	kPa	7.46	7.00	10.47	11.16		
	Fan speed 5	kPa	9.00	8.72	12.00	14.00		
	Fan speed 6	kPa	9.46		14.03	15.43		
	Low	kPa	6.42	6.40	7.30	8.07		
	Medium	kPa	7.46	8.72	10.47	11.16		
	High	kPa	9.46		14.03	15.43		
Allowed water temperature	Cooling	Min.	°C	5				
		Max.	°C	90.0				
	Heating	Min.	°C	5.00				
		Max.	°C	90.000				
Piping connections	Water	Inlet		3/4"				
		Outlet		3/4"				
	Drain	OD	mm	17.3				

Standard accessories: Installation manual; Quantity: 1;

Electrical specifications				FWE03DAFN5V3-R	FWE04DAFN5V3-R	FWE05DAFN5V3-R	FWE06DAFN5V3-R
Power supply	Type			230 / 1 / 50			
	Phase			1~			
	Frequency	Hz		50			
	Voltage	V		230			

Electrical specifications				FWE07DAFN5V3-R	FWE08DAFN5V3-R	FWE10DAFN5V3-R	FWE11DAFN5V3-R
Power supply	Type			230 / 1 / 50			
	Phase			1~			
	Frequency	Hz		50			
	Voltage	V		230			

Inlet/outlet water temperature 7/12 °C; inlet air temperature 27°C DB 19°C WB |
 Heating: indoor temp. 20°CDB, 15°CWB; entering water temp. 45°C, water temperature drop 5K. |
 Heating: indoor temp. 20°CDB, 15°CWB; entering water temp. 65°C, water temperature drop 10K.

2 Specifications

2

Technical specifications				FWE03DAFN5V3-S	FWE04DAFN5V3-S	FWE05DAFN5V3-S	FWE06DAFN5V3-S
Cooling capacity (standard conditions)	Latent capacity 4-pipe	High	kW	0.320	0.350	0.440	0.500
		Super high	kW	0.350	0.370	0.470	0.560
	Sensible capacity 4-pipe	Fan speed 1	kW	1.00	0.99	1.09	1.02
			kW	1.16	1.15	1.35	1.29
		Fan speed 2	kW	1.31	1.34	1.64	1.97
			kW	1.46	1.55		
		Fan speed 3	kW	1.59	1.69	2.11	2.30
			kW	-	-	-	2.56
		Low	kW	1.00	1.15	1.35	1.64
			kW	1.31	1.34	1.64	1.97
		Medium	kW	1.59	1.69	2.11	2.56
			kW	1.22	1.21	1.33	1.24
	Total capacity 4-pipe	Fan speed 1	kW	1.41	1.40	1.64	1.57
			kW	1.60	1.64	2.00	2.40
	Fan speed 2	kW	1.78	1.90	2.46		
		Fan speed 3	kW	1.94	2.06	2.58	2.80
	Fan speed 4		kW	-	-	-	3.12
		Low	kW	1.22	1.40	1.64	2.00
	Medium		kW	1.60	1.64	2.00	2.40
		High	kW	1.94	2.06	2.58	3.12
Heating capacity (standard conditions)	Capacity 4-pipe		Fan speed 1	kW	1.47	2.11	2.16
		Fan speed 2	kW	1.64	2.23	2.36	2.23
	Fan speed 3	kW	1.81	2.36	2.58	2.69	
	Fan speed 4	kW	1.96	2.50	2.83	3.09	
	Fan speed 5	kW	2.11	2.61	2.94	3.42	
	Fan speed 6	kW	-	-	-	3.83	
	Low	kW	1.47	2.23	2.36	2.69	
		kW	1.81	2.36	2.58	3.09	
	Medium	kW	2.11	2.61	2.94	3.83	
		kW	-	-	-	0.039	
Power input	Fan speed 1	kW	-	0.026	-	0.039	
		kW	0.027	0.028	0.029	0.040	
	Fan speed 2	kW	-	0.029	0.032	0.043	
		kW	-	0.031	0.035	0.045	
	Fan speed 3	kW	0.033	0.032	0.039	0.047	
		kW	-	-	-	0.062	
	Low	kW	0.026	0.028	0.029	0.043	
kW		-	0.029	0.032	0.045		
Power input	Med.	kW	0.033	0.032	0.039	0.062	
	High	kW	-	-	-	-	
Dimensions	Unit	Height	mm	200			
		Width	mm	795		995	
		Depth	mm	610			
	Packed unit	Height	mm	205			
		Width	mm	925		1,125	
		Depth	mm	745			
Weight	Unit	kg	18.0	-	19.0	22.5	
	Packed unit	kg	20.5	-	21.5	25.5	
Casing	Colour		Metal				
	Material		Galvanised sheet metal				
Heat exchanger	Length	mm	490				690
		Rows	Quantity	2	3		
	Row step	Quantity	6		4		
		Fin	Type	ML fin (Multi louver)			
	Tube material		Seamless copper				
	Tube type		ø7 Smooth tube				
	Tube thickness	mm	0.32				
	Air filter	Type		Plastic Frame / PP Filter Net (G1)			
Quantity		pc	2		3		

2 Specifications

Technical specifications			FWE03DAFN5V3-S	FWE04DAFN5V3-S	FWE05DAFN5V3-S	FWE06DAFN5V3-S	
Fan	Type		Sirocco fan				
	Quantity		2			3	
	Air flow rate	Fan speed 1	m ³ /h	235	227	243	290
		Fan speed 2	m ³ /h	280	263	304	355
		Fan speed 3	m ³ /h	326	306	374	446
		Fan speed 4	m ³ /h	365	350	453	527
		Fan speed 5	m ³ /h	407	385	488	593
		Fan speed 6	m ³ /h		-		677
	Available static pressure	Low	m ³ /h	235	263	304	446
		Medium	m ³ /h	326	306	374	527
		High	m ³ /h	407	385	488	677
		Fan speed 1	Pa		27		25
	Fan	Fan speed 2	Pa	34	33		32
		Fan speed 3	Pa		41	40	41
Fan speed 4		Pa	47	48	50	48	
Fan speed 5		Pa	55	57		55	
Fan speed 6		Pa		-		60	
Fan motor	Model		YF110-10-4S3		YF110-12-4S35	YF110-15-4S22	
	Type		AC Motor				
	Index of Protection		20				
Insulation material	Insulation grade		B				
	Poles		4				
			Class 0 (NBR Foam, Melamine Foam)				
Total sound power level	Fan speed 1	dB(A)	32.0			30.0	
	Fan speed 2	dB(A)	35.0	34.0	37.0	34.0	
	Fan speed 3	dB(A)	39.0	38.0	41.0	39.0	
	Fan speed 4	dB(A)		42.0	46.0	44.0	
	Fan speed 5	dB(A)	45.0	44.0	50.0	46.0	
	Fan speed 6	dB(A)		-		50.0	
	Low	dB(A)	32.0	34.0	37.0	39.0	
	Medium	dB(A)	39.0	38.0	41.0	44.0	
	High	dB(A)	45.0	44.0		50.0	
Sound pressure level	Fan speed 1	dB(A)	21.0	22.0		20.0	
	Fan speed 2	dB(A)	25.0	23.0	27.0	24.0	
	Fan speed 3	dB(A)	28.0	27.0	31.0	29.0	
	Fan speed 4	dB(A)		31.0	36.0	34.0	
	Fan speed 5	dB(A)	35.0	34.0	40.0	36.0	
	Fan speed 6	dB(A)		-		40.0	
	Low	dB(A)	21.0	23.0	27.0	29.0	
	Medium	dB(A)	28.0	27.0	31.0	34.0	
	High	dB(A)	35.0	34.0		40.0	
	Water flow	Cooling	Fan speed 1	l/h	210	209	228
Fan speed 2			l/h	243	241	282	268
Fan speed 3			l/h	275	282	343	345
Fan speed 4			l/h	303	321	413	412
Fan speed 5			l/h	334	354	443	468
Fan speed 6			l/h		-		536
Available static pressure		Low	l/h	210	241	282	345
		Medium	l/h	275	282	343	412
		High	l/h	334	354	443	536

2 Specifications

2

Technical specifications				FWE03DAFN5V3-S	FWE04DAFN5V3-S	FWE05DAFN5V3-S	FWE06DAFN5V3-S	
Water flow	Heating	Fan speed 1	l/h	126	182	186	164	
		Fan speed 2	l/h	141	192	203	192	
		Fan speed 3	l/h	156	203	222	231	
		Fan speed 4	l/h	168	215	243	266	
		Fan speed 5	l/h	182	225	253	294	
		Fan speed 6	l/h		-		330	
		High	l/h	182	225	253	330	
		Low	l/h	126	192	203	231	
		Medium	l/h	156	203	222	266	
	Water pressure drop	Cooling	Fan speed 1	kPa	6.05	4.00	3.00	1.00
			Fan speed 2	kPa	8.00	5.00	5.53	2.00
			Fan speed 3	kPa	9.49	6.61	8.40	3.23
			Fan speed 4	kPa	11.00	9.00	13.00	4.90
			Fan speed 5	kPa	13.18	10.09	14.35	7.00
			Fan speed 6	kPa		-		8.85
		Low	kPa	6.05	5.00	5.53	3.23	
		Medium	kPa	9.49	6.61	8.40	4.90	
		High	kPa	13.18	10.09	14.35	8.85	
		Heating	Fan speed 1	kPa	11.78		7.00	
Fan speed 2	kPa		14.00	7.50	8.18		4.00	
Fan speed 3	kPa		17.20	8.22	9.41		6.00	
Fan speed 4	kPa		20.00	9.00	11.00		7.94	
Fan speed 5	kPa		22.87	9.62	11.58		10.00	
Fan speed 6	kPa			-			12.25	
Low	kPa		11.78	7.50	8.18		6.00	
Medium	kPa	17.20	8.22	9.41		7.94		
High	kPa	22.87	9.62	11.58		12.25		
Allowed water temperature	Cooling	Min.	°C			5		
		Max.	°C			90.0		
	Heating	Min.	°C			5.00		
		Max.	°C			90.000		
Piping connections	Water	Inlet				3/4"		
		Outlet				3/4"		
	Drain	OD	mm				17.3	

Technical specifications				FWE07DAFN5V3-S	FWE08DAFN5V3-S	FWE10DAFN5V3-S	FWE11DAFN5V3-S
Cooling capacity (standard conditions)	Latent capacity	High	kW	0.590	0.660	0.880	0.940
		Super high	kW	0.610	0.710	0.940	1.000
	Sensible capacity 4-pipe	Fan speed 1	kW	1.70	1.95	2.11	2.31
		Fan speed 2	kW	1.98	2.27	2.54	2.78
		Fan speed 3	kW	2.14	2.46	2.93	3.14
		Fan speed 4	kW	2.28	2.66	3.43	3.61
		Fan speed 5	kW	2.67	3.00	4.03	4.31
		Fan speed 6	kW	2.81	3.21	4.28	4.59
		Low	kW	1.98	2.27	2.54	2.78
		Medium	kW	2.28	3.00	3.43	3.61
		High	kW	2.81	3.21	4.28	4.59
	Total capacity 4-pipe	Fan speed 1	kW	2.07	2.38	2.57	2.81
		Fan speed 2	kW	2.42	2.77	3.10	3.39
		Fan speed 3	kW	2.61	3.00	3.57	3.83
		Fan speed 4	kW	2.79	3.24	4.19	4.40
		Fan speed 5	kW	3.26	3.66	4.91	5.25
		Fan speed 6	kW	3.42	3.92	5.22	5.59
		Low	kW	2.42	2.77	3.10	3.39
		Medium	kW	2.79	3.66	4.19	4.40
High		kW	3.42	3.92	5.22	5.59	
Heating capacity (standard conditions)	Capacity 4-pipe	Fan speed 1	kW		3.22	3.39	3.60
		Fan speed 2	kW		3.57	3.87	4.14
		Fan speed 3	kW		3.73	4.26	4.49
		Fan speed 4	kW		3.93	4.87	5.07
		Fan speed 5	kW		4.34	5.43	5.73
		Fan speed 6	kW		4.57	5.83	6.18
		Low	kW		3.57	3.87	4.14
		Medium	kW	3.93	4.34	4.87	5.07
		High	kW		4.57	5.83	6.18

2 Specifications

Technical specifications			FWE07DAFN5V3-S	FWE08DAFN5V3-S	FWE10DAFN5V3-S	FWE11DAFN5V3-S	
Power input	Fan speed 1	kW	0.029		0.026	0.028	
	Fan speed 2	kW	0.037		0.036	0.039	
	Fan speed 3	kW	0.041		0.045	0.047	
	Fan speed 4	kW	0.046		0.061	0.064	
	Fan speed 5	kW	0.057		0.081	0.086	
	Fan speed 6	kW	0.067		0.104	0.110	
	Low	kW	0.037		0.036	0.039	
Power input	Med.	kW	0.046	0.057	0.061	0.064	
	High	kW	0.067		0.104	0.110	
Dimensions	Unit	Height	mm				200
		Width	mm				1,200
		Depth	mm				610
	Packed unit	Height	mm				205
		Width	mm				1,325
		Depth	mm				745
Weight	Unit	kg	26.0				
	Packed unit	kg	30.0				
Casing	Colour		Metal				
	Material		Galvanised sheet metal				
Heat exchanger	Length	mm	890				
	Rows	Quantity	3				
	Row step	Quantity	4				
	Fin	Type	ML fin (Multi louver)				
	Tube material		Seamless copper				
	Tube type		ø7 Smooth tube				
	Tube thickness	mm	0.32				
Air filter	Type		Plastic Frame / PP Filter Net (G1)				
	Quantity	pc	3				
Fan	Type		Sirocco fan				
	Quantity		4				
Air flow rate	Fan speed 1	m ³ /h	397		436	489	
		m ³ /h	481		555	619	
	Fan speed 2	m ³ /h	521		648	705	
		m ³ /h	570		798	846	
	Fan speed 3	m ³ /h	669		934	1,008	
		m ³ /h	725		1,032	1,116	
	Fan speed 4	m ³ /h	481		555	619	
		m ³ /h	570		798	846	
	Low	m ³ /h	481		555	619	
		m ³ /h	570		798	846	
	Medium	m ³ /h	570		798	846	
m ³ /h		725		1,032	1,116		
Available static pressure	Fan speed 1	Pa	28		22	25	
		Pa	34		32	34	
	Fan speed 2	Pa		40		41	
		Pa	46			49	
	Fan speed 3	Pa	55		59	58	
		Pa	60		63	65	
Fan	Low	Pa	34		32	34	
		Pa	46	55		49	
	Medium	Pa		60		63	
		Pa		60		63	
Fan motor	Model		YF110-18-4S44		YF110-52-4S40	YF110-56-4S14	
	Type		AC Motor				
	Index of Protection		20				
	Insulation grade		B				
	Poles		4				
	Insulation material		Class 0 (NBR Foam, Melamine Foam)				
	Total sound power level	Fan speed 1	dB(A)	31.0		38.0	40.0
dB(A)			34.0		43.0	44.0	
Fan speed 2		dB(A)	38.0			47.0	
		dB(A)	42.0		51.0	52.0	
Fan speed 3		dB(A)	46.0		54.0	56.0	
		dB(A)	50.0		57.0	59.0	
Low		dB(A)	34.0		43.0	44.0	
		dB(A)	42.0	46.0	51.0	52.0	
Medium		dB(A)	50.0		57.0	59.0	
		dB(A)	50.0		57.0	59.0	
Sound pressure level		Fan speed 1	dB(A)	21.0		27.0	29.0
	dB(A)		24.0		33.0	34.0	
	Fan speed 2	dB(A)	27.0			37.0	
		dB(A)	32.0		41.0	42.0	
	Fan speed 3	dB(A)	36.0		44.0	46.0	
		dB(A)	40.0		47.0	49.0	
	Low	dB(A)	24.0		33.0	34.0	
		dB(A)	32.0	36.0	41.0	42.0	
	Medium	dB(A)	40.0		47.0	49.0	
		dB(A)	40.0		47.0	49.0	

2 Specifications

2

Technical specifications				FWE07DAFN5V3-S	FWE08DAFN5V3-S	FWE10DAFN5V3-S	FWE11DAFN5V3-S	
Water flow	Cooling	Fan speed 1	l/h	354	409	442	483	
		Fan speed 2	l/h	415	477	534	583	
		Fan speed 3	l/h	444	509	605	650	
		Fan speed 4	l/h	479	549	720	757	
		Fan speed 5	l/h	551	630	824	881	
		Fan speed 6	l/h	589	674	897	962	
		Low	l/h	415	477	534	583	
		Medium	l/h	479	630	720	757	
		High	l/h	589	674	897	962	
Water flow	Heating	Fan speed 1	l/h		277	291	310	
		Fan speed 2	l/h		307	333	356	
		Fan speed 3	l/h		321	366	386	
		Fan speed 4	l/h		338	419	436	
		Fan speed 5	l/h		374	467	493	
		Fan speed 6	l/h		393	502	531	
		High	l/h		393	502	531	
		Low	l/h		307	333	356	
		Medium	l/h	338	374	419	436	
	Water pressure drop	Cooling	Fan speed 1	kPa	4.00	9.00	8.00	9.00
			Fan speed 2	kPa	5.96	10.90	11.07	13.00
			Fan speed 3	kPa	7.00	12.00	14.00	16.00
			Fan speed 4	kPa	8.36	14.00	19.23	21.12
			Fan speed 5	kPa	12.00	16.74	26.00	29.00
			Fan speed 6	kPa	13.48	18.67	29.00	33.09
Low			kPa	5.96	10.90	11.07	13.00	
Medium			kPa	8.36	16.74	19.23	21.12	
High			kPa	13.48	18.67	29.00	33.09	
Heating	Heating	Fan speed 1	kPa		5.00	6.00	7.00	
		Fan speed 2	kPa	6.42	6.40	7.30	8.07	
		Fan speed 3	kPa		7.00	8.00	9.00	
		Fan speed 4	kPa	7.46	7.00	10.47	11.16	
		Fan speed 5	kPa	9.00	8.72	12.00	14.00	
		Fan speed 6	kPa		9.46	14.03	15.43	
		Low	kPa	6.42	6.40	7.30	8.07	
		Medium	kPa	7.46	8.72	10.47	11.16	
		High	kPa		9.46	14.03	15.43	
Allowed water temperature	Cooling	Min.	°C			5		
		Max.	°C			90.0		
	Heating	Min.	°C			5.00		
		Max.	°C			90.000		
Piping connections	Water	Inlet				3/4"		
		Outlet				3/4"		
	Drain	OD	mm				17.3	

Standard accessories: Installation manual; Quantity: 1;

Electrical specifications				FWE03DAFN5V3-S	FWE04DAFN5V3-S	FWE05DAFN5V3-S	FWE06DAFN5V3-S
Power supply	Type			230 / 1 / 50			
	Phase			1~			
	Frequency	Hz		50			
	Voltage	V		230			

Electrical specifications				FWE07DAFN5V3-S	FWE08DAFN5V3-S	FWE10DAFN5V3-S	FWE11DAFN5V3-S
Power supply	Type			230 / 1 / 50			
	Phase			1~			
	Frequency	Hz		50			
	Voltage	V		230			

Inlet/outlet water temperature 7/12 °C; inlet air temperature 27°C DB 19°C WB |

Heating: indoor temp. 20°CDB, 15°CWB; entering water temp. 45°C, water temperature drop 5K. |

Heating: indoor temp. 20°CDB, 15°CWB; entering water temp. 65°C, water temperature drop 10K.

2 Specifications

Technical specifications				FWE03DAFN5V3-T	FWE04DAFN5V3-T	FWE05DAFN5V3-T	FWE06DAFN5V3-T	
Cooling capacity (standard conditions)	Latent capacity	High	kW	0.320	0.350	0.440	0.500	
		Super high	kW	0.350	0.370	0.470	0.560	
	Sensible capacity	4-pipe	Fan speed 1	kW	1.00	0.99	1.09	1.02
			Fan speed 2	kW	1.16	1.15	1.35	1.29
	4-pipe	Fan speed 3	kW	1.31	1.34	1.64		
		Fan speed 4	kW	1.46	1.55	2.02	1.97	
	4-pipe	Fan speed 5	kW	1.59	1.69	2.11	2.30	
		Fan speed 6	kW		-		2.56	
	Total capacity	4-pipe	Low	kW	1.00	1.15	1.35	1.64
			Medium	kW	1.31	1.34	1.64	1.97
	4-pipe	High	kW	1.59	1.69	2.11	2.56	
		Fan speed 1	kW	1.22	1.21	1.33	1.24	
	4-pipe	Fan speed 2	kW	1.41	1.40	1.64	1.57	
		Fan speed 3	kW	1.60	1.64	2.00		
	4-pipe	Fan speed 4	kW	1.78	1.90	2.46	2.40	
		Fan speed 5	kW	1.94	2.06	2.58	2.80	
	4-pipe	Fan speed 6	kW		-		3.12	
		Low	kW	1.22	1.40	1.64	2.00	
	4-pipe	Medium	kW	1.60	1.64	2.00	2.40	
		High	kW	1.94	2.06	2.58	3.12	
Heating capacity (standard conditions)	Capacity	4-pipe	Fan speed 1	kW	1.47	2.11	2.16	1.91
			Fan speed 2	kW	1.64	2.23	2.36	2.23
	4-pipe	Fan speed 3	kW	1.81	2.36	2.58	2.69	
		Fan speed 4	kW	1.96	2.50	2.83	3.09	
	4-pipe	Fan speed 5	kW	2.11	2.61	2.94	3.42	
		Fan speed 6	kW		-		3.83	
	4-pipe	Low	kW	1.47	2.23	2.36	2.69	
		Medium	kW	1.81	2.36	2.58	3.09	
	4-pipe	High	kW	2.11	2.61	2.94	3.83	
		Fan speed 1	kW		0.026		0.039	
Power input	Fan speed 2	kW	0.027	0.028	0.029	0.040		
	Fan speed 3	kW		0.029	0.032	0.043		
	Fan speed 4	kW		0.031	0.035	0.045		
	Fan speed 5	kW	0.033	0.032	0.039	0.047		
	Fan speed 6	kW		-		0.062		
	Low	kW	0.026	0.028	0.029	0.043		
	Med.	kW		0.029	0.032	0.045		
High	kW	0.033	0.032	0.039	0.062			
Dimensions	Unit	Height	mm	200				
		Width	mm	795		995		
		Depth	mm	610				
	Packed unit	Height	mm	205				
		Width	mm	925		1,125		
		Depth	mm	745				
Weight	Unit	kg	18.0		19.0	22.5		
	Packed unit	kg	20.5		21.5	25.5		
Casing	Colour		Metal					
	Material		Galvanised sheet metal					
Heat exchanger	Length	mm	490		690			
	Rows	Quantity	2		3			
	Row step	Quantity		6		4		
	Fin	Type	ML fin (Multi louver)					
	Tube material		Seamless copper					
	Tube type		ø7 Smooth tube					
	Tube thickness	mm	0.32					
Air filter	Type		Plastic Frame / PP Filter Net (G1)					
	Quantity	pc	2		3			

2 Specifications

Technical specifications			FWE03DAFN5V3-T	FWE04DAFN5V3-T	FWE05DAFN5V3-T	FWE06DAFN5V3-T	
Fan	Type		Sirocco fan				
	Quantity		2			3	
	Air flow rate	Fan speed 1	m ³ /h	235	227	243	290
		Fan speed 2	m ³ /h	280	263	304	355
		Fan speed 3	m ³ /h	326	306	374	446
		Fan speed 4	m ³ /h	365	350	453	527
		Fan speed 5	m ³ /h	407	385	488	593
		Fan speed 6	m ³ /h		-		677
	Available static pressure	Low	m ³ /h	235	263	304	446
		Medium	m ³ /h	326	306	374	527
		High	m ³ /h	407	385	488	677
		Fan speed 1	Pa		27		25
	Fan static pressure	Fan speed 2	Pa	34	33		32
		Fan speed 3	Pa		41	40	41
		Fan speed 4	Pa	47	48	50	48
Fan speed 5		Pa	55	57		55	
Fan speed 6		Pa		-		60	
Fan available static pressure	Low	Pa	27	33	32	41	
	Medium	Pa		41	40	48	
	High	Pa	55	57	55	60	
Fan motor	Model		YF110-10-4S3		YF110-12-4S35	YF110-15-4S22	
	Type		AC Motor				
	Index of Protection		20				
	Insulation grade		B				
	Poles		4				
Insulation material			Class 0 (NBR Foam, Melamine Foam)				
Total sound power level	Fan speed 1	dB(A)	32.0			30.0	
	Fan speed 2	dB(A)	35.0	34.0	37.0	34.0	
	Fan speed 3	dB(A)	39.0	38.0	41.0	39.0	
	Fan speed 4	dB(A)		42.0	46.0	44.0	
	Fan speed 5	dB(A)	45.0	44.0	50.0	46.0	
	Fan speed 6	dB(A)		-		50.0	
	Low	dB(A)	32.0	34.0	37.0	39.0	
	Medium	dB(A)	39.0	38.0	41.0	44.0	
	High	dB(A)	45.0	44.0		50.0	
Sound pressure level	Fan speed 1	dB(A)	21.0	22.0		20.0	
	Fan speed 2	dB(A)	25.0	23.0	27.0	24.0	
	Fan speed 3	dB(A)	28.0	27.0	31.0	29.0	
	Fan speed 4	dB(A)		31.0	36.0	34.0	
	Fan speed 5	dB(A)	35.0	34.0	40.0	36.0	
	Fan speed 6	dB(A)		-		40.0	
	Low	dB(A)	21.0	23.0	27.0	29.0	
	Medium	dB(A)	28.0	27.0	31.0	34.0	
	High	dB(A)	35.0	34.0		40.0	
Water flow	Cooling	Fan speed 1	l/h	210	209	228	213
		Fan speed 2	l/h	243	241	282	268
		Fan speed 3	l/h	275	282	343	345
		Fan speed 4	l/h	303	321	413	412
		Fan speed 5	l/h	334	354	443	468
		Fan speed 6	l/h		-		536
	Available static pressure	Low	l/h	210	241	282	345
		Medium	l/h	275	282	343	412
		High	l/h	334	354	443	536

2 Specifications

Technical specifications				FWE03DAFN5V3-T	FWE04DAFN5V3-T	FWE05DAFN5V3-T	FWE06DAFN5V3-T	
Water flow	Heating	Fan speed 1	l/h	126	182	186	164	
		Fan speed 2	l/h	141	192	203	192	
		Fan speed 3	l/h	156	203	222	231	
		Fan speed 4	l/h	168	215	243	266	
		Fan speed 5	l/h	182	225	253	294	
		Fan speed 6	l/h		-		330	
		High	l/h	182	225	253	330	
	Water pressure drop	Cooling	Fan speed 1	kPa	6.05	4.00	3.00	1.00
			Fan speed 2	kPa	8.00	5.00	5.53	2.00
			Fan speed 3	kPa	9.49	6.61	8.40	3.23
			Fan speed 4	kPa	11.00	9.00	13.00	4.90
			Fan speed 5	kPa	13.18	10.09	14.35	7.00
			Fan speed 6	kPa		-		8.85
			Low	kPa	6.05	5.00	5.53	3.23
Heating	Heating	Medium	kPa	9.49	6.61	8.40	4.90	
		High	kPa	13.18	10.09	14.35	8.85	
		Fan speed 1	kPa	11.78	7.00		3.00	
		Fan speed 2	kPa	14.00	7.50	8.18	4.00	
		Fan speed 3	kPa	17.20	8.22	9.41	6.00	
		Fan speed 4	kPa	20.00	9.00	11.00	7.94	
		Fan speed 5	kPa	22.87	9.62	11.58	10.00	
		Fan speed 6	kPa		-		12.25	
		Low	kPa	11.78	7.50	8.18	6.00	
		Medium	kPa	17.20	8.22	9.41	7.94	
High	kPa	22.87	9.62	11.58	12.25			
Allowed water temperature	Cooling	Min.	°C	5				
		Max.	°C	90.0				
	Heating	Min.	°C	5.00				
		Max.	°C	90.000				
Piping connections	Water	Inlet		3/4"				
		Outlet		3/4"				
	Drain	OD	mm	17.3				

Technical specifications				FWE07DAFN5V3-T	FWE08DAFN5V3-T	FWE10DAFN5V3-T	FWE11DAFN5V3-T
Cooling capacity (standard conditions)	Latent capacity	High	kW	0.590	0.660	0.880	0.940
		Super high	kW	0.610	0.710	0.940	1.000
	Sensible capacity 4-pipe	Fan speed 1	kW	1.70	1.95	2.11	2.31
		Fan speed 2	kW	1.98	2.27	2.54	2.78
		Fan speed 3	kW	2.14	2.46	2.93	3.14
		Fan speed 4	kW	2.28	2.66	3.43	3.61
		Fan speed 5	kW	2.67	3.00	4.03	4.31
		Fan speed 6	kW	2.81	3.21	4.28	4.59
		Low	kW	1.98	2.27	2.54	2.78
		Medium	kW	2.28	3.00	3.43	3.61
	Total capacity 4-pipe	High	kW	2.81	3.21	4.28	4.59
		Fan speed 1	kW	2.07	2.38	2.57	2.81
		Fan speed 2	kW	2.42	2.77	3.10	3.39
		Fan speed 3	kW	2.61	3.00	3.57	3.83
Fan speed 4		kW	2.79	3.24	4.19	4.40	
Fan speed 5		kW	3.26	3.66	4.91	5.25	
Fan speed 6		kW	3.42	3.92	5.22	5.59	
Low		kW	2.42	2.77	3.10	3.39	
Heating capacity (standard conditions)	Capacity 4-pipe	Medium	kW	2.79	3.66	4.19	4.40
		High	kW	3.42	3.92	5.22	5.59
		Fan speed 1	kW		3.22	3.39	3.60
		Fan speed 2	kW		3.57	3.87	4.14
		Fan speed 3	kW		3.73	4.26	4.49
		Fan speed 4	kW		3.93	4.87	5.07
		Fan speed 5	kW		4.34	5.43	5.73
		Fan speed 6	kW		4.57	5.83	6.18
Low	kW		3.57	3.87	4.14		
Medium	kW	3.93	4.34	4.87	5.07		
High	kW		4.57	5.83	6.18		

2 Specifications

Technical specifications			FWE07DAFN5V3-T	FWE08DAFN5V3-T	FWE10DAFN5V3-T	FWE11DAFN5V3-T
Power input	Fan speed 1	kW	0.029		0.026	0.028
	Fan speed 2	kW	0.037		0.036	0.039
	Fan speed 3	kW	0.041		0.045	0.047
	Fan speed 4	kW	0.046		0.061	0.064
	Fan speed 5	kW	0.057		0.081	0.086
	Fan speed 6	kW	0.067		0.104	0.110
	Low	kW	0.037		0.036	0.039
Power input	Med.	kW	0.046	0.057	0.061	0.064
	High	kW	0.067		0.104	0.110
Dimensions	Unit	Height	200			
		Width	1,200			
		Depth	610			
	Packed unit	Height	205			
		Width	1,325			
		Depth	745			
Weight	Unit	kg	26.0			
	Packed unit	kg	30.0			
Casing	Colour		Metal			
	Material		Galvanised sheet metal			
Heat exchanger	Length	mm	890			
	Rows	Quantity	3			
	Row step	Quantity	4			
	Fin	Type	ML fin (Multi louver)			
	Tube material		Seamless copper			
	Tube type		ø7 Smooth tube			
	Tube thickness	mm	0.32			
Air filter	Type		Plastic Frame / PP Filter Net (G1)			
	Quantity	pc	3			
Fan	Type		Sirocco fan			
	Quantity		4			
Air flow rate	Fan speed 1	m ³ /h	397		436	489
		m ³ /h	481		555	619
	Fan speed 2	m ³ /h	521		648	705
		m ³ /h	570		798	846
	Fan speed 3	m ³ /h	669		934	1,008
		m ³ /h	725		1,032	1,116
	Fan speed 4	m ³ /h	481		555	619
		m ³ /h	570		798	846
	Low	m ³ /h	481		555	619
		m ³ /h	570		798	846
	Medium	m ³ /h	570		798	846
m ³ /h		725		1,032	1,116	
Available static pressure	Fan speed 1	Pa	28		22	25
		Pa	34		32	34
	Fan speed 2	Pa		40		41
		Pa	46			49
	Fan speed 3	Pa	55		59	58
		Pa	60		63	65
Available static pressure	Low	Pa	34		32	34
		Pa	46	55		49
	Medium	Pa		60		63
		Pa		60		63
High	Pa			63	65	
	Pa			63	65	
Fan motor	Model		YF110-18-4S44		YF110-52-4S40	YF110-56-4S14
	Type		AC Motor			
	Index of Protection		20			
	Insulation grade		B			
	Poles		4			
	Insulation material		Class 0 (NBR Foam, Melamine Foam)			
Total sound power level	Fan speed 1	dB(A)	31.0		38.0	40.0
		dB(A)	34.0		43.0	44.0
	Fan speed 2	dB(A)	38.0			47.0
		dB(A)	42.0		51.0	52.0
	Fan speed 3	dB(A)	46.0		54.0	56.0
		dB(A)	50.0		57.0	59.0
	Low	dB(A)	34.0		43.0	44.0
		dB(A)	42.0	46.0	51.0	52.0
	Medium	dB(A)	50.0		57.0	59.0
		dB(A)	50.0		57.0	59.0
	Sound pressure level	Fan speed 1	dB(A)	21.0		27.0
dB(A)			24.0		33.0	34.0
Fan speed 2		dB(A)	27.0			37.0
		dB(A)	32.0		41.0	42.0
Fan speed 3		dB(A)	36.0		44.0	46.0
		dB(A)	40.0		47.0	49.0
Low		dB(A)	24.0		33.0	34.0
		dB(A)	32.0	36.0	41.0	42.0
Medium		dB(A)	32.0		41.0	42.0
		dB(A)	40.0		47.0	49.0
High		dB(A)	40.0		47.0	49.0
	dB(A)	40.0		47.0	49.0	

2 Specifications

Technical specifications				FWE07DAFN5V3-T	FWE08DAFN5V3-T	FWE10DAFN5V3-T	FWE11DAFN5V3-T	
Water flow	Cooling	Fan speed 1	l/h	354	409	442	483	
		Fan speed 2	l/h	415	477	534	583	
		Fan speed 3	l/h	444	509	605	650	
		Fan speed 4	l/h	479	549	720	757	
		Fan speed 5	l/h	551	630	824	881	
		Fan speed 6	l/h	589	674	897	962	
		Low	l/h	415	477	534	583	
		Medium	l/h	479	630	720	757	
		High	l/h	589	674	897	962	
Water flow	Heating	Fan speed 1	l/h		277	291	310	
		Fan speed 2	l/h		307	333	356	
		Fan speed 3	l/h		321	366	386	
		Fan speed 4	l/h		338	419	436	
		Fan speed 5	l/h		374	467	493	
		Fan speed 6	l/h		393	502	531	
		High	l/h		393	502	531	
		Low	l/h		307	333	356	
		Medium	l/h	338	374	419	436	
	Water pressure drop	Cooling	Fan speed 1	kPa	4.00	9.00	8.00	9.00
			Fan speed 2	kPa	5.96	10.90	11.07	13.00
			Fan speed 3	kPa	7.00	12.00	14.00	16.00
			Fan speed 4	kPa	8.36	14.00	19.23	21.12
			Fan speed 5	kPa	12.00	16.74	26.00	29.00
			Fan speed 6	kPa	13.48	18.67	29.00	33.09
Low			kPa	5.96	10.90	11.07	13.00	
Medium			kPa	8.36	16.74	19.23	21.12	
High			kPa	13.48	18.67	29.00	33.09	
Heating	Heating	Fan speed 1	kPa		5.00	6.00	7.00	
		Fan speed 2	kPa	6.42	6.40	7.30	8.07	
		Fan speed 3	kPa		7.00	8.00	9.00	
		Fan speed 4	kPa	7.46	7.00	10.47	11.16	
		Fan speed 5	kPa	9.00	8.72	12.00	14.00	
		Fan speed 6	kPa		9.46	14.03	15.43	
		Low	kPa	6.42	6.40	7.30	8.07	
		Medium	kPa	7.46	8.72	10.47	11.16	
		High	kPa		9.46	14.03	15.43	
Allowed water temperature	Cooling	Min.	°C			5		
		Max.	°C			90.0		
	Heating	Min.	°C			5.00		
		Max.	°C			90.000		
Piping connections	Water	Inlet				3/4"		
		Outlet				3/4"		
	Drain	OD	mm				17.3	

Standard accessories: Installation manual; Quantity: 1;

Electrical specifications				FWE03DAFN5V3-T	FWE04DAFN5V3-T	FWE05DAFN5V3-T	FWE06DAFN5V3-T
Power supply	Type			230 / 1 / 50			
	Phase			1~			
	Frequency	Hz		50			
	Voltage	V		230			

Electrical specifications				FWE07DAFN5V3-T	FWE08DAFN5V3-T	FWE10DAFN5V3-T	FWE11DAFN5V3-T
Power supply	Type			230 / 1 / 50			
	Phase			1~			
	Frequency	Hz		50			
	Voltage	V		230			

Inlet/outlet water temperature 7/12 °C; inlet air temperature 27°C DB 19°C WB | Heating: indoor temp. 20°CDB, 15°CWB; entering water temp. 45°C, water temperature drop 5K. | Heating: indoor temp. 20°CDB, 15°CWB; entering water temp. 65°C, water temperature drop 10K.

3 Nomenclature

3 - 1 Nomenclature

3

FWE03-11DAFN5V3(L-R-S-T)

FWE03-11DATN5V3(L-R-S-T)

DIGIT	CLASSIFICATION	CODE	DESCRIPTION	FW	E	03	D	A	F	N	5	V3	-	L
1-2	TYPE OF UNIT	FW	Water Fan Coil Unit	---	---	---	---	---	---	---	---	---	---	---
3	SUBCLASS	E	Flexi LSP	---	---	---	---	---	---	---	---	---	---	---
4-5	SPECIFICATION INDEX	03	Capacity Class, (01=0.5 kW / EU)	---	---	---	---	---	---	---	---	---	---	---
6	MODEL CHANGE INDICATION *	D	Major Model Change	---	---	---	---	---	---	---	---	---	---	---
7		A	Minor Model Change	---	---	---	---	---	---	---	---	---	---	---
8	COIL TYPE	T	Two Pipe	---	---	---	---	---	---	---	---	---	---	---
		F	Four pipe	---	---	---	---	---	---	---	---	---	---	---
9	VALVE	N	Without valve	---	---	---	---	---	---	---	---	---	---	---
		V	3 way on of 230 V valve	---	---	---	---	---	---	---	---	---	---	---
		D	3 way simplified on-off 230 V valve	---	---	---	---	---	---	---	---	---	---	---
		W	3 way on-off 24VAC valve	---	---	---	---	---	---	---	---	---	---	---
		P	3 proportional valve	---	---	---	---	---	---	---	---	---	---	---
		T	2 way on-off 230 V valve	---	---	---	---	---	---	---	---	---	---	---
		U	2 way on-off 24VAC valve	---	---	---	---	---	---	---	---	---	---	---
		O	2 way proportional valve	---	---	---	---	---	---	---	---	---	---	---
10	FACTORY	5	DTAS (Turkey)	---	---	---	---	---	---	---	---	---	---	---
11-12	POWER SUPPLY	V3	Single Phase 50 Hz / 230 V	---	---	---	---	---	---	---	---	---	---	---
13	OPTION (FACTORY MOUNTED)	-	No Option	---	---	---	---	---	---	---	---	---	---	---
		F	IP44 Fan Motor	---	---	---	---	---	---	---	---	---	---	---
		G	Electric Heater + IP44 Fan Motor	---	---	---	---	---	---	---	---	---	---	---
		H	G2 Filter	---	---	---	---	---	---	---	---	---	---	---
14	CONNECTION SIDE	S	Leftside water - Left side electric connection	---	---	---	---	---	---	---	---	---	---	---
		L	Left side water - Right side electric connection	---	---	---	---	---	---	---	---	---	---	---
		T	Right side water - Right side electric connection	---	---	---	---	---	---	---	---	---	---	---
		R	Right side water - Light side electric connection	---	---	---	---	---	---	---	---	---	---	---

NOTES

1. For sixth classification (*) means major/minor design change progress with each design change (A,B,C,D,...)
2. This nomenclature is created only for FWE-D

3D124527D

4 Electrical data

4 - 1 Electrical Data

FWE-DAFN5V3(L-R-S-T)

FWE-DATN5V3(L-R-S-T)

UNITS		POWER SUPPLY					INPUT(W)
MODEL	Hz	VOLTAGE RANGE (V)	VOLTAGE LIMITS(V)	MCA	MFA	FLA	FAN ONLY
FWE03DAFN5V3-L/R/S/T	50	230	MAX. 253 MIN. 207	0,16	16	0,13	31
FWE03DATN5V3-L/R/S/T	50	230	MAX. 253 MIN. 207	0,16	16	0,13	
FWE04DAFN5V3-L/R/S/T	50	230	MAX. 253 MIN. 207	0,16	16	0,13	32
FWE04DATN5V3-L/R/S/T	50	230	MAX. 253 MIN. 207	0,16	16	0,13	
FWE05DAFN5V3-L/R/S/T	50	230	MAX. 253 MIN. 207	0,19	16	0,13	39
FWE05DATN5V3-L/R/S/T	50	230	MAX. 253 MIN. 207	0,19	16	0,13	
FWE06DAFN5V3-L/R/S/T	50	230	MAX. 253 MIN. 207	0,33	16	0,13	62
FWE06DATN5V3-L/R/S/T	50	230	MAX. 253 MIN. 207	0,33	16	0,13	
FWE07DAFN5V3-L/R/S/T	50	230	MAX. 253 MIN. 207	0,35	16	0,13	65
FWE07DATN5V3-L/R/S/T	50	230	MAX. 253 MIN. 207	0,35	16	0,13	
FWE08DAFN5V3-L/R/S/T	50	230	MAX. 253 MIN. 207	0,44	16	0,13	67
FWE08DATN5V3-L/R/S/T	50	230	MAX. 253 MIN. 207	0,44	16	0,13	
FWE10DAFN5V3-L/R/S/T	50	230	MAX. 253 MIN. 207	0,54	16	0,13	104
FWE10DATN5V3-L/R/S/T	50	230	MAX. 253 MIN. 207	0,54	16	0,13	
FWE11DAFN5V3-L/R/S/T	50	230	MAX. 253 MIN. 207	0,58	16	0,13	110
FWE11DATN5V3-L/R/S/T	50	230	MAX. 253 MIN. 207	0,58	16	0,13	

Symbols:

MCA : Min. Circuit Amps (A)
 MFA : Max. Fuse Amps (See note 5)
 kW : Fan Motor Rated Output (kW)
 FLA : Full Load Amps (A)
 ESP : External Static Pressure

Notes:

- Voltage limits:
Units are suitable for use on electrical systems where voltage supplied to unit terminals is not below/above listed range limits.
- Max. allowable voltage unbalance between phases 2%.
- MCA = 1,25 x FLA;
(Next lower standard fuse rating min. 16A)
- Select wire size based on the MCA.
- Input power measured from rated conditions which has 230 V.

MFA <= 4 x FLA;

3D123458A

5 Options

5 - 1 Options

5
FWE-DAFN5V3(L-R-S-T)
FWE-DATN5V3(L-R-S-T)

Item	Option Kit Name	Applicable Models	Description	Factory Mounted	Option Kit
2-way valves -ON/OFF	E2V2VN01V3WA	2 Pipe	Power supply: 1Ph, 230v, 50-60Hz, NC (Normally closed), kvs: 2,8m ³ /h, max. operation pressure: 16bar	Yes*	Yes
	E2V4VN01V3WA	4 Pipe			
3-way valves-ON/OFF	E3V2VN02V3WA	2 Pipe			
	E3V4VN02V3WA	4 Pipe			
Proportional valve (3-ways with 4 ports), DC 24V	E4V2PN04V3DA	2 Pipe / 4 Pipe	kvs: 0,4 m ³ /h	Power supply: 24v AC (+10 to -15%), 50/60 Hz, Control Input: 0-10v	Yes
	E4V2PN06V3DA		kvs: 0,63 m ³ /h		
	E4V2PN10V3DA		kvs: 1,0 m ³ /h		
	E4V4PN04V3DA		kvs: 0,4 m ³ /h		
	E4V4PN06V3DA		kvs: 0,63 m ³ /h		
	E4V4PN10V3DA		kvs: 1,0 m ³ /h		
Remote Controller	FWECA1A	2 Pipe / 4 Pipe	<ul style="list-style-type: none"> Control of on-off valves for two or four pipes systems Control of auxiliary heating element Cooling/heating switching in the following modes: local or remote manual (centralised), automatic (depending on water temperature (optional) or air temperature) Possibility, by means of clean contacts, of remote centralised cooling/heating switching and external activation Temperature sensor kit (accessory FWTSKAA***) Economy function (setpoint correction by 2.5°C and forcing of the fan to run at minimum available speed) 	No	Yes
	FWECA2A		Same as FWECA1A with following additional functions: 1) Humidity management: - display of relative humidity - dehumidification function (cooling mode) Manual activation 2) serial communication interface (RS485 bus): - possibility to set up a masterslave system up to 247 slave units, in which one of the controls plays the role of master and manages all the other slave units (modbus protocol).		
	FWECA3A		Same as FWECA2A with following additional functions: 1) Back light 2) Proportional valve control (two voltage outputs for the proportional valves) 3) Voltage contact 0-10V 4) Time clock and weekly schedule (on / off or setpoint air) 5) Integration in BMS (already included in the FWECA2A version) 6) Two digital outputs (voltage free) to manage electric heaters with the weekly schedule		
Remote Controller (Control panel)**	FWECSAC		<ul style="list-style-type: none"> Management of AC 3-speeds fan motor (on/off and automatic speed change) Management of AC 4-speeds fan motor (on/off and automatic speed change) Management of BLDC fan motor, on/off valve, proportional heater, electrical heater, air relative humidity control Cooling / heating mode switching based on air / water temp. Clean contact for remote activation Weekly timer programmed operation mode Configurable digital outputs Master & slave system on serial RS485 Master & slave system on conveyed waves (CW) 		Yes
Remote Controller (Power control board-PCB)**	FWECSAP				Yes
Remote Controller (Mounting plate)**	FWECSAD				Yes
Additional Drain Pan	ESFD01D6		It is an additional drain pan (external) that collects the condensation from the valves. (Not included in valve kits).		Yes
Vertical Installation Kit (Floor) front suction	ESFH01D5		Unit may not be mounted vertically without a vertical kit. Refer the outside drawings for selection of the appropriate kit.		Yes
Vertical Installation Kit (Wall Mounted)	ESFH02D5				
Vertical Installation Leg (Floor) bottom suction	ESFH03D5				

* In case of option request as factory mounted, refer to FWE-D nomenclature for correct model name (3D124527).

** In case of FWECSAC remote control request; PCB, mounting plate and control panel are required / ordered together.

*** To display on the controller the environment humidity.

2D136176

6 Capacity tables

6 - 1 Cooling Capacity Tables

FWE-DAFN5V3-(L-R-S-T)

COOLING 4 PIPE @ 0 ESP																	
Air Temperature		DB:27°C - WB:19°C - RH %47															
Water Temperature (Entering °C - Leaving °C)		ΔT=5								ΔT=6							
		7-12				10-15				7-13				10-16			
Model / Fan Speed		Pc	Sc	Wf	Dp	Pc	Sc	Wf	Dp	Pc	Sc	Wf	Dp	Pc	Sc	Wf	Dp
		kW	kW	l/h	kPa	kW	kW	l/h	kPa	kW	kW	l/h	kPa	kW	kW	l/h	kPa
FWE03DAF N5V3-L/R/S/T	1	1.22	1.00	210	6.00	0.84	0.81	145	3.40	1.07	0.95	153	3.70	0.77	0.77	111	2.20
	2	1.41	1.15	243	7.60	0.97	0.94	168	4.20	1.23	1.10	177	4.60	0.89	0.89	128	2.80
	3 (M)	1.60	1.31	275	9.40	1.11	1.06	191	5.20	1.40	1.25	202	5.60	1.01	1.01	145	3.40
	4	1.76	1.44	303	11.10	1.22	1.17	211	6.10	1.54	1.37	222	6.60	1.11	1.11	160	3.90
	5 (H)	1.94	1.59	334	13.10	1.34	1.29	232	7.10	1.70	1.51	244	7.70	1.23	1.23	176	4.50
FWE04DAF N5V3-L/R/S/T	1	1.21	0.99	209	3.80	0.84	0.80	145	2.00	1.06	0.94	152	2.20	0.76	0.76	110	1.20
	2 (L)	1.40	1.15	241	4.90	0.97	0.93	168	2.60	1.23	1.09	177	2.80	0.88	0.88	127	1.60
	3 (M)	1.63	1.34	282	6.60	1.13	1.09	196	3.40	1.43	1.27	206	3.70	1.03	1.03	149	2.10
	4	1.86	1.53	321	8.40	1.29	1.24	223	4.30	1.64	1.46	235	4.70	1.18	1.18	170	2.60
	5 (H)	2.05	1.68	354	10.00	1.43	1.37	246	5.10	1.80	1.60	259	5.60	1.30	1.30	187	3.10
FWE05DAF N5V3-L/R/S/T	1	1.32	1.08	228	3.50	0.92	0.88	158	1.50	1.16	1.03	167	1.70	0.84	0.84	120	0.80
	2 (L)	1.64	1.34	282	5.50	1.09	1.09	196	2.50	1.44	1.28	206	2.80	1.03	1.03	149	1.30
	3 (M)	1.99	1.63	343	8.40	1.33	1.33	239	3.80	1.75	1.56	251	4.30	1.26	1.26	181	2.10
	4	2.40	1.96	413	12.30	1.60	1.60	287	5.70	2.10	1.87	302	6.40	1.52	1.52	218	3.10
	5 (H)	2.57	2.11	443	14.30	1.72	1.72	308	6.60	2.26	2.01	324	7.40	1.63	1.63	234	3.70
FWE06DAF N5V3-L/R/S/T	1	1.23	1.01	213	0.90	0.85	0.82	147	0.30	1.08	0.96	156	0.30	0.77	0.77	112	0.10
	2	1.55	1.27	268	1.70	1.07	1.03	185	0.60	1.36	1.21	196	0.70	0.98	0.98	141	0.20
	3 (L)	2.00	1.64	343	3.20	1.39	1.33	239	1.30	1.75	1.56	252	1.50	1.26	1.26	182	0.60
	4 (M)	2.39	1.96	412	4.90	1.66	1.59	286	2.00	2.10	1.87	302	2.30	1.51	1.51	218	1.00
	5	2.72	2.23	468	6.50	1.89	1.81	325	2.80	2.38	2.12	342	3.10	1.72	1.72	247	1.40
	6 (H)	3.11	2.55	536	8.80	2.16	2.07	372	3.80	2.73	2.43	392	4.30	1.97	1.97	283	2.00
FWE07DAF N5V3-L/R/S/T	1	2.06	1.69	354	4.00	1.43	1.37	246	1.40	1.80	1.61	259	1.70	1.30	1.30	187	0.60
	2 (L)	2.41	1.97	415	5.90	1.67	1.61	288	2.30	2.11	1.88	304	2.60	1.53	1.53	219	1.00
	3	2.58	2.11	444	6.90	1.79	1.72	308	2.70	2.26	2.01	325	3.10	1.63	1.63	234	1.20
	4 (M)	2.78	2.28	479	8.30	1.93	1.85	333	3.40	2.44	2.17	350	3.80	1.76	1.76	253	1.60
	5	3.20	2.62	551	11.50	2.22	2.13	383	4.80	2.81	2.50	403	5.50	2.03	2.03	291	2.30
	6 (H)	3.42	2.80	589	13.50	2.37	2.28	409	5.70	3.00	2.67	431	6.40	2.16	2.16	311	2.80
FWE08DAF N5V3-L/R/S/T	1	2.37	1.94	409	8.60	1.65	1.58	284	5.10	2.08	1.85	299	5.50	1.51	1.51	216	3.50
	2 (L)	2.77	2.27	477	10.80	1.92	1.85	332	6.30	2.43	2.16	349	6.80	1.76	1.76	252	4.30
	3	2.96	2.42	509	12.00	2.06	1.97	354	7.00	2.60	2.31	373	7.50	1.88	1.88	270	4.70
	4	3.19	2.61	549	13.40	2.22	2.13	382	7.80	2.80	2.49	402	8.40	2.02	2.02	290	5.30
	5 (M)	3.66	3.00	630	16.70	2.54	2.44	438	9.50	3.21	2.86	461	10.30	2.32	2.32	333	6.40
	6 (H)	3.92	3.21	674	18.60	2.72	2.61	468	10.50	3.44	3.06	493	11.40	2.48	2.48	356	7.00
FWE10DAF N5V3-L/R/S/T	1	2.56	2.10	442	7.80	1.79	1.71	308	4.10	2.25	2.00	324	4.55	1.63	1.63	234	2.60
	2 (L)	3.10	2.54	534	11.00	2.16	2.07	372	5.80	2.72	2.42	391	6.33	1.97	1.97	283	3.60
	3	3.51	2.88	605	13.90	2.44	2.35	421	7.20	3.09	2.75	443	7.91	2.23	2.23	320	4.40
	4 (M)	4.18	3.43	720	19.20	2.91	2.79	501	9.80	3.67	3.27	527	10.80	2.65	2.65	381	6.00
	5	4.79	3.92	824	24.70	3.32	3.19	573	12.50	4.20	3.74	603	13.80	3.03	3.03	435	7.60
	6 (H)	5.21	4.27	897	29.00	3.47	3.47	623	14.60	4.57	4.07	656	16.10	3.30	3.30	473	8.90
FWE11DAF N5V3-L/R/S/T	1	2.81	2.30	483	9.20	1.95	1.88	337	4.80	2.46	2.19	354	5.30	1.78	1.78	256	3.00
	2 (L)	3.39	2.78	583	13.00	2.36	2.26	406	6.70	2.98	2.65	427	7.40	2.15	2.15	309	4.20
	3	3.77	3.09	650	15.80	2.63	2.52	452	8.20	3.32	2.95	476	9.00	2.40	2.40	344	5.00
	4 (M)	4.40	3.61	757	21.10	3.06	2.94	527	10.80	3.86	3.44	554	11.80	2.79	2.79	401	6.60
	5	5.12	4.20	881	28.00	3.56	3.41	612	14.20	4.49	4.00	645	15.60	3.24	3.24	466	8.60
	6 (H)	5.59	4.58	962	33.00	3.88	3.72	668	16.70	4.91	4.37	704	18.40	3.54	3.54	507	10.10

SYMBOLS

- Pc = Total cooling capacity
- Sc = Sensible cooling capacity
- Wf = Water flow rate
- Dp = Water pressure drop

3D122016A

6 Capacity tables

6 - 1 Cooling Capacity Tables

6

FWE-DAFN5V3-(L-R-S-T)

COOLING 4 PIPE @ 0 ESP																	
Air Temperature		DB:26°C - WB:18.5°C - RH %49															
Water Temperature (Entering °C - Leaving °C)		ΔT=5								ΔT=6							
		7-12				10-15				7-13				10-16			
Model / Fan Speed		Pc	Sc	Wf	Dp	Pc	Sc	Wf	Dp	Pc	Sc	Wf	Dp	Pc	Sc	Wf	Dp
		kW	kW	l/h	kPa	kW	kW	l/h	kPa	kW	kW	l/h	kPa	kW	kW	l/h	kPa
FWE03DAF N5V3-L/R/S/T	1 (L)	1.12	0.96	192	5.20	0.79	0.79	136	3.10	0.95	0.90	137	3.10	0.70	0.70	101	2.00
	2	1.29	1.11	222	6.60	0.92	0.92	158	3.80	1.10	1.04	158	3.90	0.82	0.82	117	2.50
	3 (M)	1.47	1.26	253	8.20	1.04	1.04	180	4.70	1.25	1.18	180	4.70	0.93	0.93	133	3.00
	4	1.62	1.39	278	9.60	1.15	1.15	198	5.50	1.38	1.30	198	5.50	1.02	1.02	147	3.40
	5 (H)	1.78	1.53	306	11.30	1.27	1.27	218	6.40	1.52	1.43	218	6.40	1.13	1.13	162	4.00
FWE04DAF N5V3-L/R/S/T	1	1.11	0.95	191	3.30	0.79	0.79	136	1.80	0.95	0.89	136	1.80	0.70	0.70	100	1.10
	2 (L)	1.28	1.10	221	4.20	0.91	0.91	157	2.30	1.10	1.03	158	2.30	0.81	0.81	117	1.40
	3 (M)	1.50	1.29	258	5.60	1.07	1.07	184	3.00	1.28	1.21	184	3.00	0.95	0.95	136	1.80
	4	1.71	1.47	295	7.20	1.22	1.22	210	3.90	1.47	1.38	210	3.90	1.09	1.09	156	2.30
	5 (H)	1.89	1.62	325	8.60	1.34	1.34	231	4.60	1.61	1.52	231	4.60	1.20	1.20	172	2.70
FWE05DAF N5V3-L/R/S/T	1	1.21	1.04	209	2.90	0.86	0.86	149	1.30	1.04	0.98	149	1.30	0.77	0.77	110	0.60
	2 (L)	1.50	1.29	259	4.60	1.07	1.07	183	2.10	1.29	1.21	184	2.20	0.95	0.95	136	1.10
	3 (M)	1.83	1.57	315	7.00	1.30	1.30	224	3.30	1.57	1.47	225	3.30	1.16	1.16	166	1.70
	4	2.20	1.89	379	10.30	1.57	1.57	270	5.00	1.88	1.77	270	5.00	1.40	1.40	200	2.60
	5 (H)	2.36	2.03	407	12.00	1.68	1.68	290	5.80	2.02	1.90	290	5.90	1.50	1.50	215	3.00
FWE06DAF N5V3-L/R/S/T	1	1.13	0.97	195	0.70	0.80	0.80	138	0.20	0.97	0.91	139	0.26	0.71	0.71	102	0.10
	2	1.43	1.23	245	1.40	1.01	1.01	174	0.50	1.22	1.14	175	0.55	0.90	0.90	129	0.20
	3 (L)	1.84	1.58	316	2.60	1.30	1.30	225	1.10	1.57	1.48	225	1.10	1.16	1.16	166	0.40
	4 (M)	2.20	1.89	378	4.00	1.56	1.56	269	1.70	1.88	1.77	270	1.70	1.39	1.39	200	0.80
	5	2.50	2.15	429	5.30	1.78	1.78	306	2.40	2.14	2.01	306	2.40	1.58	1.58	227	1.10
	6 (H)	2.86	2.46	492	7.30	2.03	2.03	350	3.30	2.45	2.30	351	3.30	1.81	1.81	259	1.60
FWE07DAF N5V3-L/R/S/T	1	1.89	1.62	325	3.20	1.34	1.34	231	1.20	1.62	1.52	232	1.20	1.20	1.20	171	0.40
	2 (L)	2.21	1.90	381	4.80	1.57	1.57	271	1.90	1.89	1.78	272	1.90	1.40	1.40	201	0.70
	3	2.37	2.03	407	5.60	1.68	1.68	290	2.30	2.03	1.90	290	2.30	1.50	1.50	215	0.90
	4 (M)	2.55	2.20	439	6.80	1.82	1.82	313	2.90	2.19	2.05	313	2.90	1.62	1.62	232	1.20
	5	2.94	2.53	506	9.50	2.09	2.09	360	4.10	2.52	2.37	361	4.20	1.87	1.87	267	1.80
	6 (H)	3.14	2.70	540	11.10	2.23	2.23	384	4.90	2.69	2.53	385	4.90	1.99	1.99	285	2.20
FWE08DAF N5V3-L/R/S/T	1	2.18	1.87	375	7.60	1.55	1.55	267	4.70	1.87	1.75	268	4.70	1.39	1.39	199	3.20
	2 (L)	2.54	2.19	438	9.50	1.81	1.81	312	5.80	2.18	2.05	312	5.80	1.62	1.62	232	3.90
	3	2.72	2.34	467	10.50	1.94	1.94	333	6.40	2.33	2.19	334	6.40	1.73	1.73	247	4.20
	4	2.93	2.52	438	11.80	2.09	2.09	359	7.10	2.51	2.36	359	7.10	1.86	1.86	267	4.70
	5 (M)	3.36	2.89	578	14.60	2.39	2.39	412	8.70	2.88	2.70	412	8.70	2.13	2.13	306	5.70
	6 (H)	3.60	3.09	619	16.30	2.56	2.56	441	9.60	3.08	2.89	441	9.60	2.28	2.28	327	6.20
FWE10DAF N5V3-L/R/S/T	1	2.36	2.03	406	6.70	1.68	1.68	290	3.70	2.02	1.90	290	3.77	1.50	1.50	215	2.20
	2 (L)	2.85	2.45	490	9.50	2.03	2.03	350	5.20	2.44	2.29	350	5.22	1.81	1.81	260	3.10
	3	3.23	2.78	556	11.90	2.30	2.30	396	6.50	2.77	2.60	396	6.50	2.05	2.05	294	3.80
	4 (M)	3.84	3.31	661	16.40	2.74	2.74	471	8.80	3.29	3.09	472	8.80	2.44	2.44	350	5.20
	5	4.40	3.78	756	21.00	3.13	3.13	539	11.20	3.76	3.54	539	11.30	2.79	2.79	400	6.60
	6 (H)	4.79	4.12	823	24.70	3.40	3.40	586	13.10	4.09	3.85	587	13.20	3.03	3.03	434	7.60
FWE11DAF N5V3-L/R/S/T	1	2.58	2.22	444	7.90	1.84	1.84	317	4.40	2.21	2.08	317	4.40	1.64	1.64	235	2.60
	2 (L)	3.11	2.68	536	11.10	2.22	2.22	382	6.10	2.67	2.51	382	6.10	1.98	1.98	284	3.60
	3	3.47	2.98	597	13.60	2.47	2.47	426	7.30	2.97	2.79	426	7.30	2.21	2.21	316	4.30
	4 (M)	4.04	3.48	695	18.00	2.88	2.88	496	9.70	3.46	3.25	496	9.70	2.57	2.57	368	5.70
	5	4.70	4.04	809	23.90	3.35	3.35	576	12.70	4.03	3.78	577	12.80	2.98	2.98	428	7.40
	6 (H)	5.13	4.41	883	28.10	3.65	3.65	628	14.90	4.39	4.13	630	15.00	3.25	3.25	466	8.60

SYMBOLS

- Pc = Total cooling capacity
- Sc = Sensible cooling capacity
- Wf = Water flow rate
- Dp = Water pressure drop

3D122018A

6 Capacity tables

6 - 1 Cooling Capacity Tables

FWE-DAFN5V3-(L-R-S-T)

COOLING 4 PIPE @ 0 ESP																	
Air Temperature		DB:25°C - WB:18°C - RH %51															
Water Temperature (Entering °C - Leaving °C)		ΔT=5								ΔT=6							
		7-12				10-15				7-13				10-16			
Model / Fan Speed		Pc	Sc	Wf	Dp	Pc	Sc	Wf	Dp	Pc	Sc	Wf	Dp	Pc	Sc	Wf	Dp
		kW	kW	l/h	kPa	kW	kW	l/h	kPa	kW	kW	l/h	kPa	kW	kW	l/h	kPa
FWE03DAF N5V3-L/R/S/T	1 (L)	1.00	0.90	173	4.40	0.73	0.73	126	2.70	1.07	0.95	153	3.70	0.77	0.77	110	2.20
	2	1.16	1.05	200	5.60	0.85	0.85	146	3.40	1.23	1.10	177	4.60	0.89	0.89	127	2.80
	3 (M)	1.32	1.19	227	6.90	0.96	0.96	166	4.10	1.40	1.25	201	5.60	1.01	1.01	145	3.40
	4	1.45	1.31	250	8.10	1.06	1.06	183	4.80	1.54	1.37	221	6.60	1.11	1.11	160	3.95
	5 (H)	1.60	1.44	276	9.50	1.17	1.17	201	5.60	1.70	1.51	244	7.60	1.23	1.23	176	4.59
FWE04DAF N5V3-L/R/S/T	1	1.00	0.90	172	2.70	0.73	0.73	125	1.50	1.06	0.94	152	2.20	0.76	0.76	109	1.20
	2 (L)	1.16	1.04	199	3.50	0.84	0.84	145	2.00	1.23	1.09	176	2.80	0.88	0.88	127	1.60
	3 (M)	1.35	1.21	232	4.60	0.98	0.98	169	2.60	1.43	1.27	205	3.70	1.03	1.03	148	2.10
	4	1.54	1.39	265	5.90	1.12	1.12	194	3.30	1.64	1.46	235	4.70	1.18	1.18	169	2.60
	5 (H)	1.70	1.53	292	7.10	1.24	1.24	213	4.00	1.80	1.60	258	5.60	1.30	1.30	187	3.10
FWE05DAF N5V3-L/R/S/T	1	1.09	0.98	188	2.30	0.79	0.79	137	1.10	1.16	1.03	166	1.70	0.84	0.84	120	0.80
	2 (L)	1.35	1.22	233	3.60	0.98	0.98	170	1.80	1.44	1.28	206	2.80	1.03	1.03	148	1.30
	3 (M)	1.65	1.48	283	5.60	1.20	1.20	207	2.80	1.75	1.56	251	4.30	1.26	1.26	181	2.10
	4	1.98	1.78	341	8.30	1.45	1.45	249	4.20	2.10	1.87	302	6.40	1.52	1.52	218	3.10
	5 (H)	2.13	1.92	366	9.60	1.55	1.55	267	4.90	2.26	2.05	324	7.40	1.63	1.63	234	3.70
FWE06DAF N5V3-L/R/S/T	1	1.02	0.91	175	0.50	0.74	0.74	127	0.10	1.08	0.96	155	0.30	0.77	0.77	111	0.10
	2	1.28	1.15	221	1.00	0.93	0.93	160	0.40	1.36	1.21	195	0.70	0.98	0.98	140	0.20
	3 (L)	1.65	1.49	284	2.00	1.20	1.20	207	0.90	1.75	1.56	252	1.50	1.26	1.26	181	0.60
	4 (M)	1.98	1.78	340	3.10	1.44	1.44	248	1.40	2.10	1.87	301	2.30	1.51	1.51	217	1.00
	5	2.25	2.02	387	4.20	1.64	1.64	282	2.00	2.38	2.12	342	3.10	1.72	1.72	247	1.40
	6 (H)	2.57	2.32	443	5.70	1.87	1.87	322	2.70	2.73	2.43	392	4.30	1.97	1.97	282	2.00
FWE07DAF N5V3-L/R/S/T	1	1.70	1.53	293	2.40	1.24	1.24	213	0.90	1.80	1.61	259	1.70	1.30	1.30	187	0.60
	2 (L)	1.99	1.79	343	3.60	1.45	1.45	250	1.50	2.11	1.88	303	2.60	1.53	1.53	219	1.00
	3	2.13	1.92	367	4.30	1.55	1.55	267	1.80	2.26	2.01	324	3.10	1.63	1.63	234	1.20
	4 (M)	2.30	2.07	396	5.20	1.68	1.68	289	2.30	2.44	2.17	350	3.80	1.76	1.76	253	1.60
	5	2.65	2.38	455	7.40	1.93	1.93	332	3.40	2.81	2.50	403	5.50	2.03	2.03	291	2.30
	6 (H)	2.83	2.54	486	8.60	2.06	2.06	354	4.00	3.00	2.67	430	6.40	2.16	2.16	310	2.80
FWE08DAF N5V3-L/R/S/T	1	1.96	1.77	338	6.50	1.43	1.43	247	4.20	2.08	1.85	299	5.50	1.51	1.51	216	3.50
	2 (L)	2.29	2.06	394	8.20	1.67	1.67	288	5.20	2.43	2.16	348	6.80	1.76	1.76	252	4.30
	3	2.45	2.20	421	9.00	1.79	1.79	307	5.70	2.60	2.31	372	7.50	1.88	1.88	269	4.70
	4	2.64	2.37	454	10.10	1.92	1.92	331	6.30	2.80	2.49	401	8.40	2.02	2.02	290	5.30
	5 (M)	3.02	2.72	520	12.40	2.21	2.21	380	7.70	3.21	2.86	460	10.30	2.32	2.32	332	6.40
	6 (H)	3.24	2.91	557	13.80	2.36	2.36	406	8.50	3.44	3.06	493	11.40	2.48	2.48	356	7.00
FWE10DAF N5V3-L/R/S/T	1	2.12	1.91	365	5.60	1.55	1.55	267	3.20	2.25	2.00	323	4.50	1.63	1.63	234	2.60
	2 (L)	2.56	2.31	441	7.80	1.87	1.87	366	4.50	2.72	2.42	390	6.30	1.97	1.97	282	3.60
	3	2.91	2.62	500	9.80	2.12	2.12	497	5.60	3.09	2.75	442	7.90	2.23	2.23	320	4.40
	4 (M)	3.46	3.12	596	13.50	2.53	2.53	623	7.60	3.67	3.27	527	10.80	2.65	2.65	381	6.00
	5	3.96	3.56	681	17.30	2.89	2.89	735	9.70	4.20	3.74	602	13.80	3.03	3.03	435	7.60
	6 (H)	4.31	3.88	741	20.30	3.14	3.14	840	11.30	4.57	4.07	656	16.10	3.30	3.30	473	8.90
FWE11DAF N5V3-L/R/S/T	1	2.32	2.09	400	6.60	1.70	1.70	292	3.80	2.46	2.19	353	5.30	1.78	1.78	256	3.00
	2 (L)	2.80	2.52	483	9.20	2.05	2.05	353	5.30	2.98	2.65	427	7.40	2.15	2.15	309	4.20
	3	3.12	2.81	538	11.20	2.28	2.28	393	6.40	3.32	2.95	475	9.00	2.40	2.40	344	5.00
	4 (M)	3.64	3.28	626	14.80	2.66	2.66	457	8.30	3.86	3.44	554	11.80	2.79	2.79	400	6.60
	5	4.23	3.81	728	19.60	3.09	3.09	531	11.00	4.49	4.00	644	15.60	3.24	3.24	465	8.60
	6 (H)	4.62	4.16	795	23.10	3.37	3.37	579	12.80	4.91	4.37	703	18.40	3.54	3.54	507	10.10

SYMBOLS

- Pc = Total cooling capacity
- Sc = Sensible cooling capacity
- Wf = Water flow rate
- Dp = Water pressure drop

3D122020A

6 Capacity tables

6 - 2 Heating Capacity Tables

6
FWE-DAFN5V3-(L-R-S-T)

HEATING 4 PIPE @ 0 ESP													
Air Temperature		DB:20°C						DB:22°C					
Water Temperature (Entering °C - Leaving °C)		ΔT=10						ΔT=10					
Model / Fan Speed		65-55			70-60			65-55			70-60		
		Ph kW	Wf l/h	Dp kPa	Ph kW	Wf l/h	Dp kPa	Ph kW	Wf l/h	Dp kPa	Ph kW	Wf l/h	Dp kPa
FWE03DAF N5V3-L/R/S/T	1 (L)	1.40	126	11.70	1.67	144	14.90	1.38	118	10.50	1.60	137	13.70
	2	1.63	140	14.30	1.86	160	18.20	1.53	132	12.70	1.78	153	16.70
	3 (M)	1.80	155	17.20	2.06	177	21.80	1.69	146	15.30	1.97	169	20.10
	4	1.95	168	19.80	2.22	191	25.20	1.83	157	17.60	2.12	183	23.20
	5 (H)	2.11	181	22.80	2.40	206	29.10	1.98	170	20.30	2.30	197	26.80
FWE04DAF N5V3-L/R/S/T	1	2.11	181	6.90	2.40	207	8.40	1.98	170	6.20	2.30	197	7.80
	2 (L)	2.22	191	7.40	2.53	218	9.10	2.09	179	6.70	2.42	208	8.50
	3 (M)	2.36	203	8.20	2.69	231	10.10	2.21	190	7.40	2.57	221	9.40
	4	2.50	215	8.90	2.85	245	11.00	2.34	201	8.10	2.72	234	10.20
	5 (H)	2.61	224	9.60	2.97	256	11.80	2.43	210	8.70	2.84	244	11.00
FWE05DAF N5V3-L/R/S/T	1	2.16	186	7.10	2.46	212	8.70	2.03	174	6.50	2.35	202	8.10
	2 (L)	2.35	202	8.10	2.68	231	10.00	2.21	190	7.40	2.56	220	9.30
	3 (M)	2.57	221	9.40	2.93	252	11.50	2.41	207	8.50	2.80	241	10.70
	4	2.82	243	10.80	3.22	276	13.40	2.65	228	9.80	3.07	264	12.50
	5 (H)	2.93	252	11.50	3.34	287	14.30	2.75	237	10.40	3.20	275	13.30
FWE06DAF N5V3-L/R/S/T	1	1.90	163	3.00	2.17	186	3.90	1.78	153	2.60	2.07	178	3.50
	2	2.23	191	4.10	2.54	218	5.30	2.09	180	3.60	2.43	208	4.90
	3 (L)	2.68	231	6.00	3.06	263	7.80	2.52	216	5.20	2.92	251	7.10
	4 (M)	3.08	265	7.90	3.52	302	10.30	2.89	249	6.90	3.36	289	9.40
	5	3.41	293	9.70	3.89	334	12.60	3.20	275	8.50	3.72	320	11.50
	6 (H)	3.83	329	12.20	4.37	375	15.90	3.59	309	10.70	4.17	359	14.50
FWE07DAF N5V3-L/R/S/T	1	3.22	277	5.40	3.67	315	6.70	3.02	260	4.90	3.51	301	6.20
	2 (L)	3.56	306	6.40	4.06	349	7.80	3.34	287	5.80	3.88	334	7.30
	3	3.73	321	6.80	4.25	365	8.40	3.50	301	6.20	4.06	349	7.80
	4 (M)	3.93	338	7.40	4.48	385	9.10	3.69	317	6.70	4.28	368	8.50
	5	4.34	373	8.70	4.95	425	10.70	4.07	350	7.80	4.73	406	9.90
	6 (H)	4.57	393	9.40	5.21	448	11.60	4.29	369	8.50	4.98	428	10.80
FWE08DAF N5V3-L/R/S/T	1	3.22	277	5.40	3.67	315	6.70	3.02	260	4.90	3.51	301	6.20
	2 (L)	3.56	306	6.40	4.06	349	7.80	3.34	287	5.80	3.88	334	7.30
	3	3.73	321	6.80	4.25	365	8.40	3.50	301	6.20	4.06	349	7.80
	4	3.93	338	7.40	4.48	385	9.10	3.69	317	6.70	4.28	368	8.50
	5 (M)	4.34	373	8.70	4.95	425	10.70	4.07	350	7.80	4.73	406	9.90
	6 (H)	4.57	393	9.40	5.21	448	11.60	4.29	369	8.50	4.98	428	10.80
FWE10DAF N5V3-L/R/S/T	1	3.38	291	5.90	3.85	331	7.20	3.17	273	5.30	3.68	317	6.70
	2 (L)	3.87	333	7.20	4.41	379	8.90	3.63	312	6.60	4.22	362	8.30
	3	4.25	365	8.40	4.85	417	10.40	3.99	343	7.60	4.63	398	9.60
	4 (M)	4.87	418	10.40	5.55	477	12.90	4.57	393	9.40	5.30	456	12.00
	5	5.43	466	12.40	6.18	532	15.40	5.09	438	11.20	5.91	508	14.30
	6 (H)	5.83	501	14.00	6.64	571	17.40	5.47	470	12.60	6.35	546	16.10
FWE11DAF N5V3-L/R/S/T	1	3.60	309	6.50	4.10	353	7.90	3.38	290	5.90	4.22	362	8.30
	2 (L)	4.13	355	8.00	4.71	405	9.90	3.88	333	7.30	4.92	387	9.20
	3	4.49	386	9.20	5.11	440	11.30	4.21	362	8.30	5.30	420	10.50
	4 (M)	5.06	435	11.10	5.77	496	13.80	4.75	409	10.00	5.92	474	12.80
	5	5.73	493	13.60	6.53	561	16.90	5.38	462	12.30	6.67	537	15.70
	6 (H)	6.17	531	15.40	7.04	605	19.10	5.79	498	13.80	7.17	578	17.70

SYMBOLS

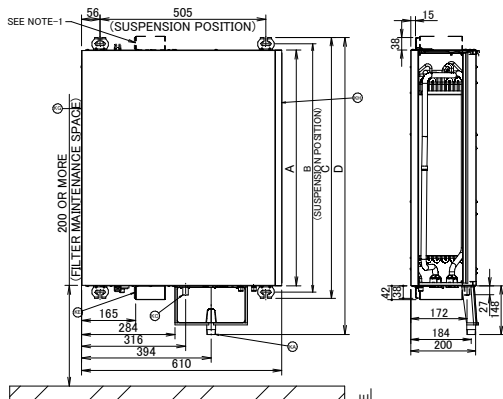
- Ph = Total heating capacity
- Wf = Water flow rate
- Dp = Water pressure drop

3D122207A

7 Dimensional drawings

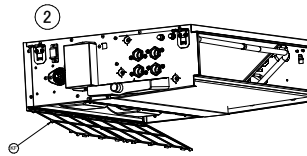
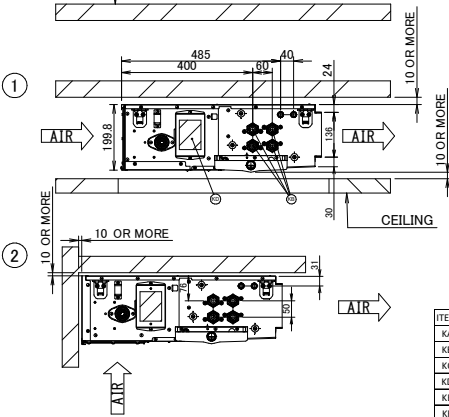
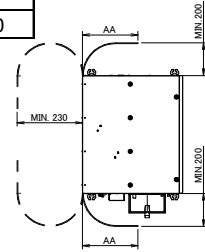
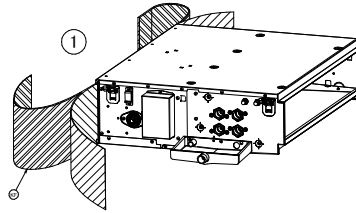
7 - 1 Dimensional Drawings

FWE-DAFN5V3(L-R-S-T)
FWE-DATN5V3(L-R-S-T)

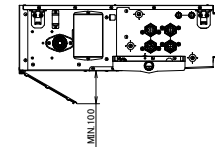


MODEL NAME	AA(MAX.)
FWE03/04/05/DAF/TN5V3L/R/S/T	710
FWE06DAF/TN5V3L/R/S/T	820
FWE07/08/09/10/11DAF/TN5V3L/R/S/T	1020

FILTER MAINTENANCE SPACE



FILTER MAINTENANCE SPACE



MODEL NAME	A	B	C	D
FWE03/04/05/DAF/TN5V3-L/R/S/T	719	757	795	905
FWE06DAF/TN5V3-L/R/S/T	919	957	995	1105
FWE07/08/10/11DAF/TN5V3-L/R/S/T	1119	1157	1195	1305

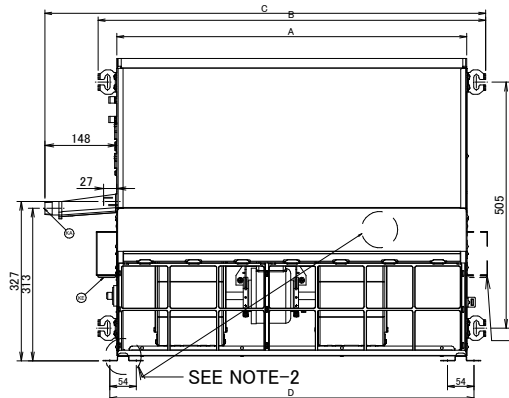
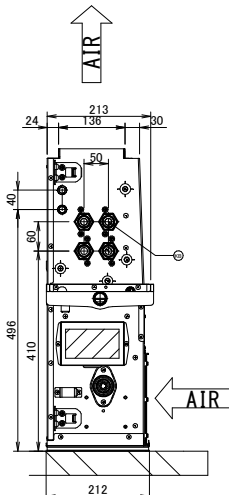
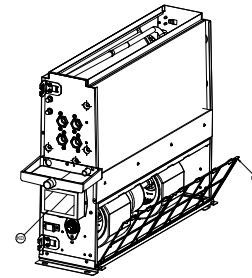
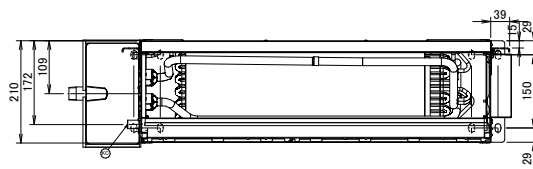
ITEM	NAME	DESCRIPTION
KA	ADDITIONAL DRAIN PAN SOCKET	OD Ø26.4(R3/4")
KB	WATER PIPE CONNECTION BODY	ID Ø26.4(G3/4")
KC	DRAIN PIPE CONNECTION	OD Ø17.3
KD	WIRING DIAGRAM	
KE	POWER SUPPLY CONNECTION	
KF	AIR FILTER	

NOTES:

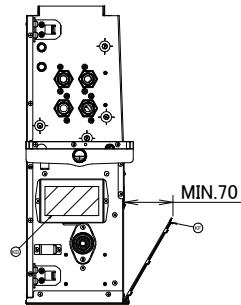
1) POWER SUPPLY CONNECTION SIDE INTERCHANGEABLE IN FIELD.

1D125336

FWE-DAFN5V3(L-R-S-T)
FWE-DAFN5V3(L-R-S-T)



FILTER MAINTENANCE SPACE



MODEL NAME	A	B	C	D
FWE03/04/05/DAF/TN5V3-L/R/S/T	719	795	905	747
FWE06DAF/TN5V3-L/R/S/T	919	995	1105	947
FWE07/08/10/11DAF/TN5V3-L/R/S/T	1119	1195	1305	1147

ITEM	NAME	DESCRIPTION
KA	ADDITIONAL DRAIN PAN SOCKET	OD Ø26.4(R3/4")
KB	WATER PIPE CONNECTION BODY	ID Ø26.4(G3/4")
KC	DRAIN PIPE CONNECTION	OD Ø17.3
KD	WIRING DIAGRAM	
KE	POWER SUPPLY CONNECTION	
KF	AIR FILTER	

NOTES:

1) POWER SUPPLY CONNECTION SIDE INTERCHANGEABLE IN FIELD.

2) OPTION KIT (ESFH01D5) SHALL BE MOUNTING FOR VERTICAL INSTALLATION .

1D125339

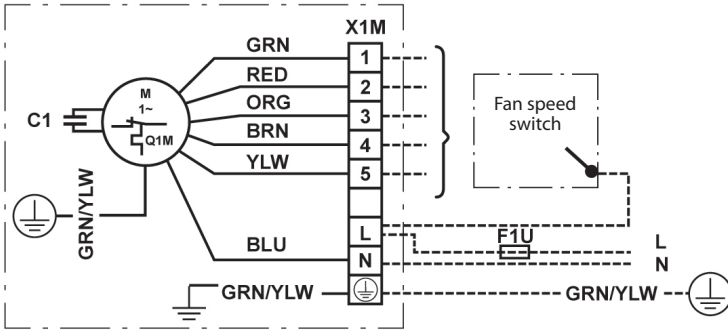
8 Wiring diagrams

8 - 1 Wiring Diagrams - Single Phase

8

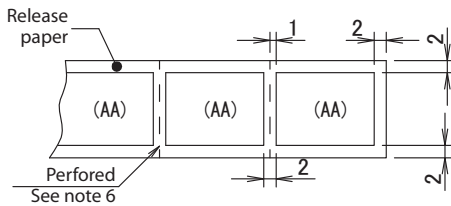
FWE03-05DAFN5V3(L-R-S-T)
FWE03-05DATN5V3(L-R-S-T)

Wiring diagram

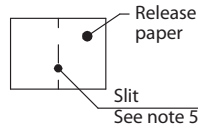


-----	Field wiring
M	Fan motor
GRN/YLW	Green / Yellow
F1U	Fuse
X1M	Terminal strip
1	Lowest speed
5	Highest speed
L	AC system supply
N	Neutral
C1	Capacitor
⊕	Protector earth
↓	Earth
Q1M	Self-operating thermal protector
GRN	Green
RED	Red
ORG	Orange
BRN	Brown
YLW	Yellow
BLU	Blue

* For the power requirements, refer to the name plate



In case of roll
(Front side of roll)



In case of plate
(Rear side of plate)

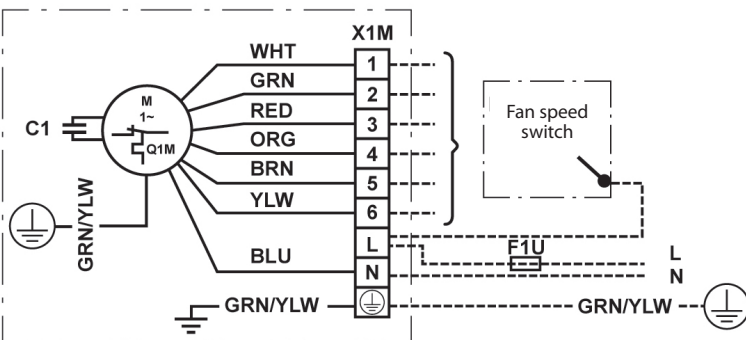
NOTES

1. Background: white, printing colour: black.
2. After printing apply coating material on face side.
3. Printed label shall comply with IEC/EN 60335-2-40 CLAUSE 7.14 (rubbing test)
4. Single side adhesive should be apply.
5. Provide slit in crosswise direction on separate liner for plate types.
6. Provide perfored in crosswise direction on roll types.
7. Refer to 4D121422-1-lsp-wiring-diagram-190109.ai for dimensions data.

4D121422A

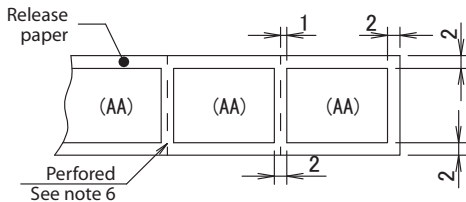
FWE06-11DAFN5V3(L-R-S-T)
FWE06-11DATN5V3(L-R-S-T)

Wiring diagram

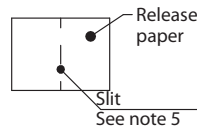


-----	Field wiring
M	Fan motor
GRN/YLW	Green / Yellow
F1U	Fuse
X1M	Terminal strip
1	Lowest speed
6	Highest speed
L	AC system supply
N	Neutral
C1	Capacitor
⊕	Protector earth
↓	Earth
Q1M	Self-operating thermal protector
GRN	Green
RED	Red
ORG	Orange
BRN	Brown
YLW	Yellow
BLU	Blue

* For the power requirements, refer to the name plate



In case of roll
(Front side of roll)



In case of plate
(Rear side of plate)

NOTES

1. Background: white, printing colour: black.
2. After printing apply coating material on face side.
3. Printed label shall comply with IEC/EN 60335-2-40 CLAUSE 7.14 (rubbing test)
4. Single side adhesive should be apply.
5. Provide slit in crosswise direction on separate liner for plate types.
6. Provide perfored in crosswise direction on roll types.
7. Refer to 4D118236-1-A-msp-wiring-diagram-190111.ai for dimensions data.

4D118236B

9 Sound data

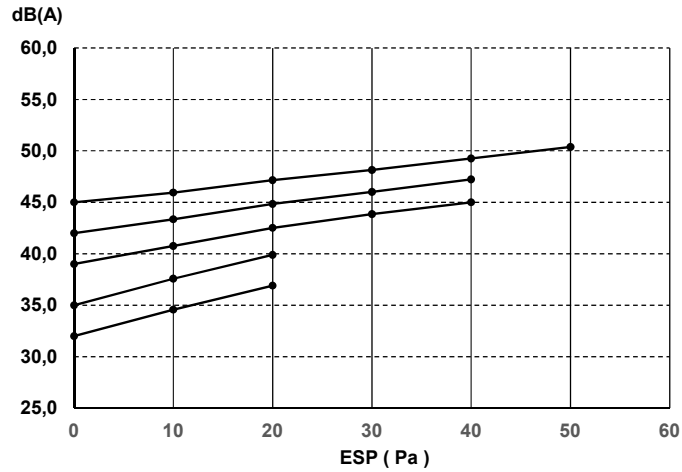
9 - 1 Sound Power Spectrum

FWE03DAFN5V3(L-R-S-T)
FWE03DATN5V3(L-R-S-T)

Sound Power overall (dBA)

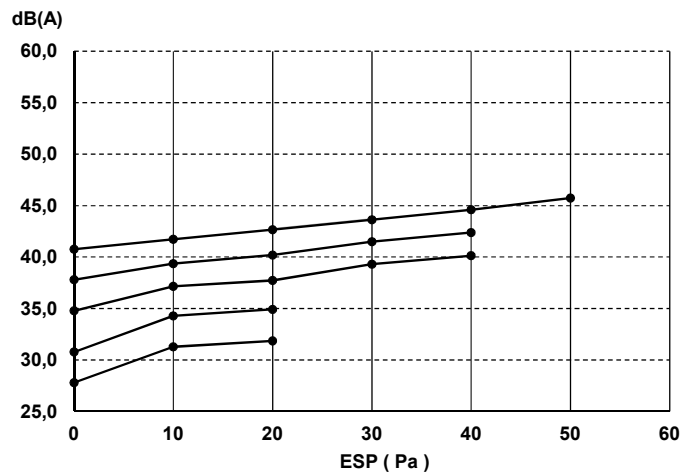
Whole casing

ESP (Pa)	Fan speed				
	5 H	4	3 M	2	1 L
0	45,0	42,0	39,0	35,0	32,0
10	46,0	43,4	40,8	37,6	34,6
20	47,2	44,8	42,5	39,9	36,9
30	48,1	46,0	43,9		
40	49,3	47,2	45,0		
50	50,4				



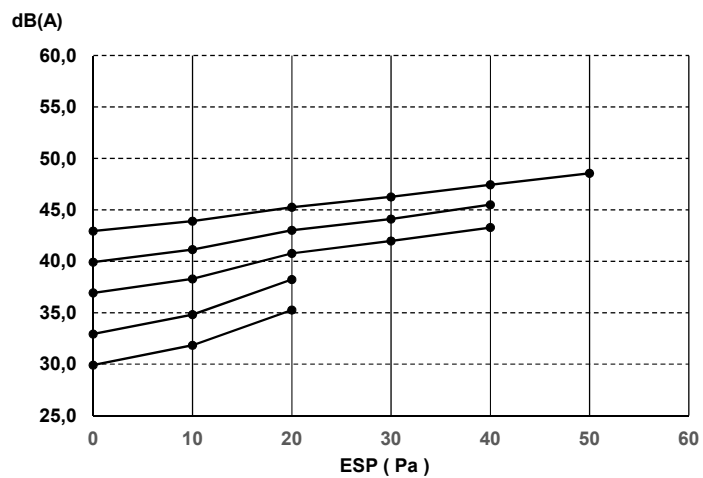
Discharge

ESP (Pa)	Fan speed				
	5 H	4	3 M	2	1 L
0	40,8	37,8	34,8	30,8	27,8
10	41,7	39,4	37,1	34,3	31,3
20	42,7	40,2	37,7	34,9	31,9
30	43,6	41,5	39,3		
40	44,6	42,4	40,1		
50	45,7				



Inlet + casing

ESP (Pa)	Fan speed				
	5 H	4	3 M	2	1 L
0	42,9	39,9	36,9	32,9	29,9
10	43,9	41,1	38,3	34,8	31,8
20	45,3	43,0	40,8	38,2	35,3
30	46,3	44,1	42,0		
40	47,4	45,5	43,3		
50	48,6				



3D122198A

9 Sound data

9 - 1 Sound Power Spectrum

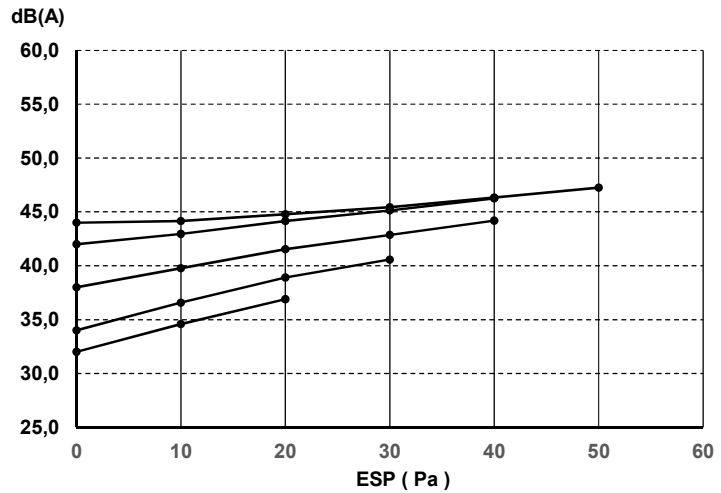
FWE04DAFN5V3(L-R-S-T)
FWE04DATN5V3(L-R-S-T)

9

Sound Power overall (dBA)

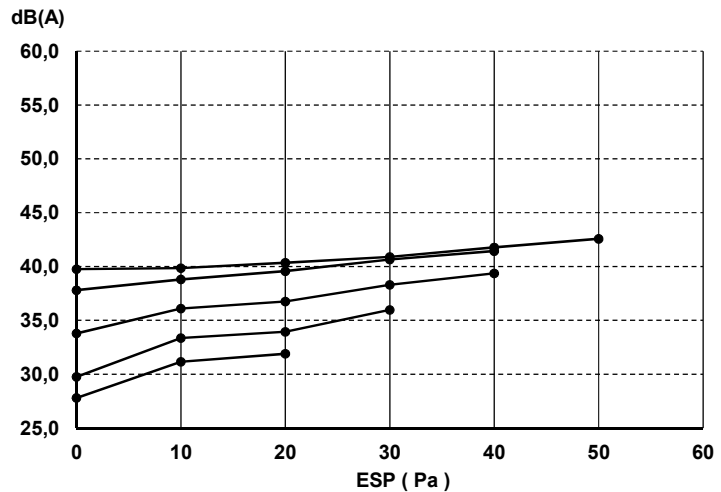
Whole casing

ESP (Pa)	Fan speed				
	5 H	4	3 M	2 L	1
0	44,0	42,0	38,0	34,0	32,0
10	44,2	43,0	39,8	36,6	34,6
20	44,8	44,2	41,5	38,9	36,9
30	45,4	45,1	42,9	40,6	
40	46,3	46,3	44,2		
50	47,3				



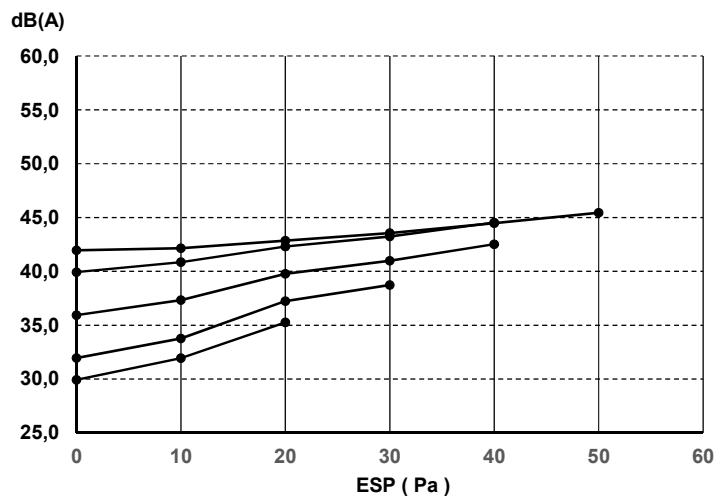
Discharge

ESP (Pa)	Fan speed				
	5 H	4	3 M	2 L	1
0	39,8	37,8	33,8	29,8	27,8
10	39,9	38,8	36,1	33,4	31,2
20	40,4	39,6	36,7	33,9	31,9
30	40,9	40,6	38,3	36,0	
40	41,8	41,4	39,4		
50	42,6				



Inlet + casing

ESP (Pa)	Fan speed				
	5 H	4	3 M	2 L	1
0	42,0	39,9	35,9	31,9	29,9
10	42,1	40,8	37,3	33,8	31,9
20	42,8	42,3	39,8	37,2	35,3
30	43,5	43,2	41,0	38,7	
40	44,5	44,5	42,5		
50	45,4				



3D122199A

9 Sound data

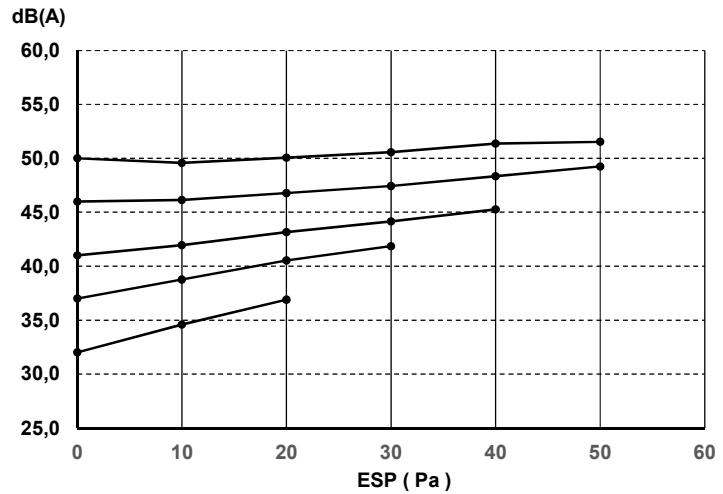
9 - 1 Sound Power Spectrum

FWE05DAFN5V3(L-R-S-T)
FWE05DATN5V3(L-R-S-T)

Sound Power overall (dBA)

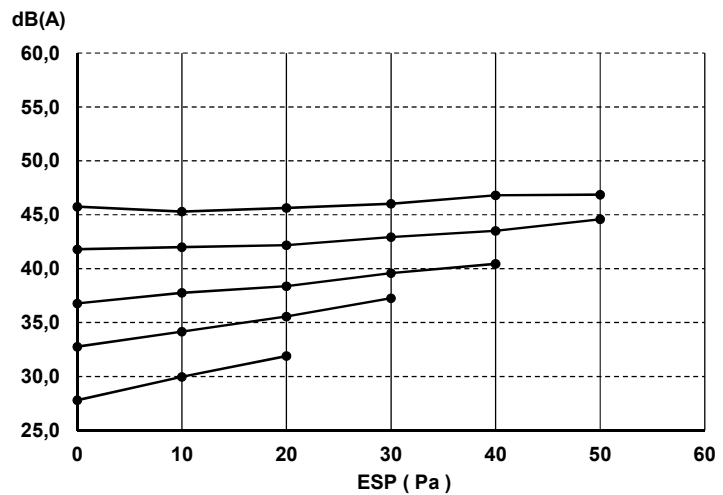
Whole casing

ESP (Pa)	Fan speed				
	5 H	4	3 M	2 L	1
0	50,0	46,0	41,0	37,0	32,0
10	49,6	46,2	42,0	38,8	34,6
20	50,1	46,8	43,2	40,5	36,9
30	50,6	47,4	44,1	41,9	
40	51,4	48,3	45,3		
50	51,5	49,3			



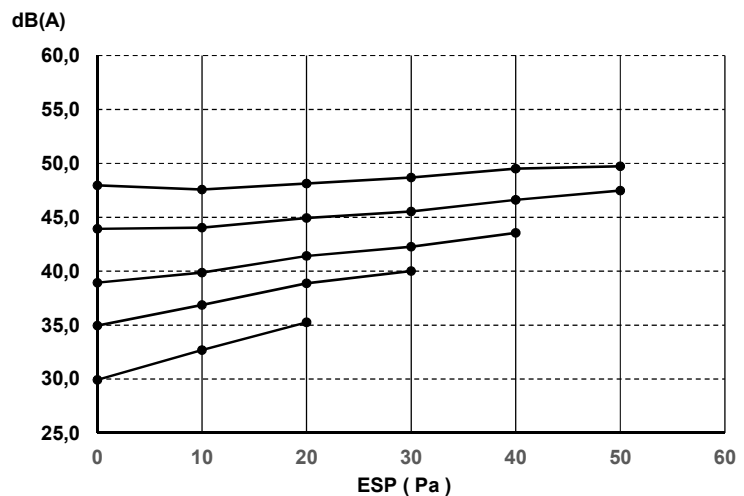
Discharge

ESP (Pa)	Fan speed				
	5 H	4	3 M	2 L	1
0	45,8	41,8	36,8	32,8	27,8
10	45,3	42,0	37,8	34,2	30,0
20	45,6	42,2	38,4	35,6	31,9
30	46,0	42,9	39,6	37,3	
40	46,8	43,5	40,4		
50	46,9	44,6			



Inlet + casing

ESP (Pa)	Fan speed				
	5 H	4	3 M	2 L	1
0	48,0	43,9	38,9	34,9	29,9
10	47,6	44,0	39,9	36,9	32,7
20	48,1	44,9	41,4	38,9	35,3
30	48,7	45,5	42,3	40,0	
40	49,5	46,6	43,5		
50	49,7	47,5			



3D122200A

9 Sound data

9 - 1 Sound Power Spectrum

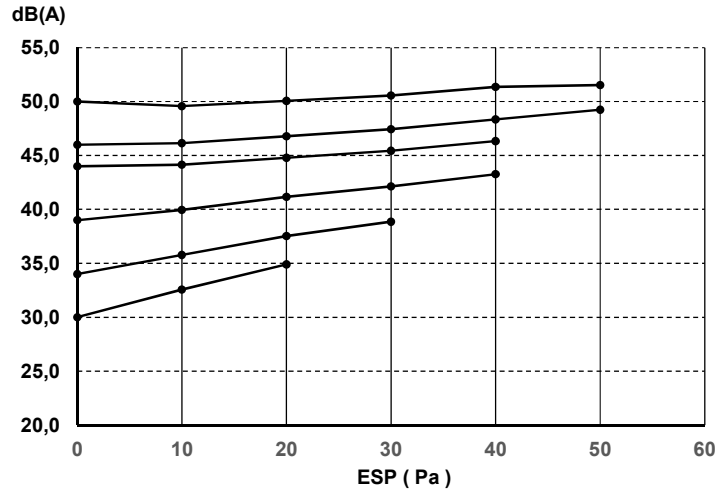
FWE06DAFN5V3(L-R-S-T)
FWE06DATN5V3(L-R-S-T)

9

Sound Power overall (dBA)

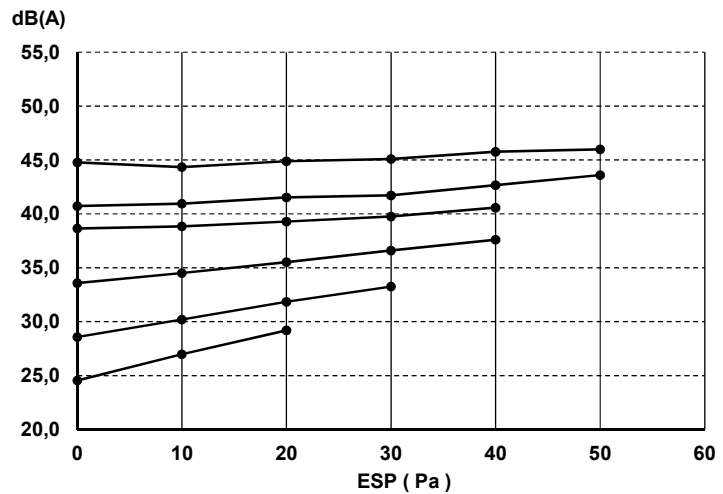
Whole casing

ESP (Pa)	Fan speed					
	6 H	5	4 M	3 L	2	1
0	50,0	46,0	44,0	39,0	34,0	30,0
10	49,6	46,2	44,2	40,0	35,8	32,6
20	50,1	46,8	44,8	41,2	37,5	34,9
30	50,6	47,4	45,4	42,1	38,9	
40	51,4	48,3	46,3	43,3		
50	51,5	49,3				



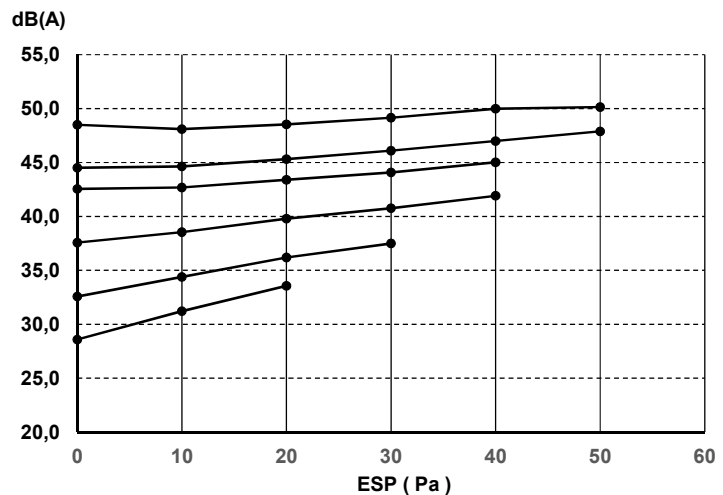
Discharge

ESP (Pa)	Fan speed					
	6 H	5	4 M	3 L	2	1
0	44,8	40,7	38,7	33,6	28,6	24,5
10	44,3	41,0	38,8	34,5	30,2	27,0
20	44,9	41,5	39,3	35,5	31,8	29,2
30	45,1	41,7	39,8	36,6	33,3	
40	45,8	42,7	40,6	37,6		
50	46,0	43,6				



Inlet + casing

ESP (Pa)	Fan speed					
	6 H	5	4 M	3 L	2	1
0	48,5	44,5	42,5	37,6	32,6	28,6
10	48,1	44,6	42,7	38,5	34,4	31,2
20	48,5	45,3	43,4	39,8	36,2	33,6
30	49,1	46,1	44,1	40,7	37,5	
40	50,0	47,0	45,0	41,9		
50	50,1	47,9				



3D122201A

9 Sound data

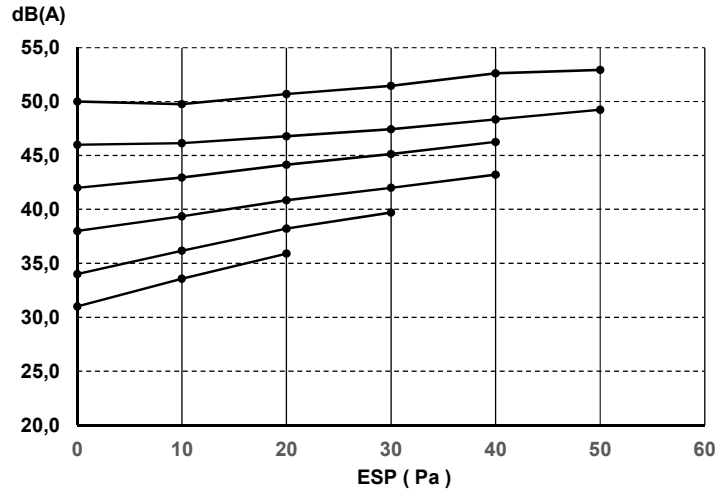
9 - 1 Sound Power Spectrum

FWE07DAFN5V3(L-R-S-T)
FWE07DATN5V3(L-R-S-T)

Sound Power overall (dBA)

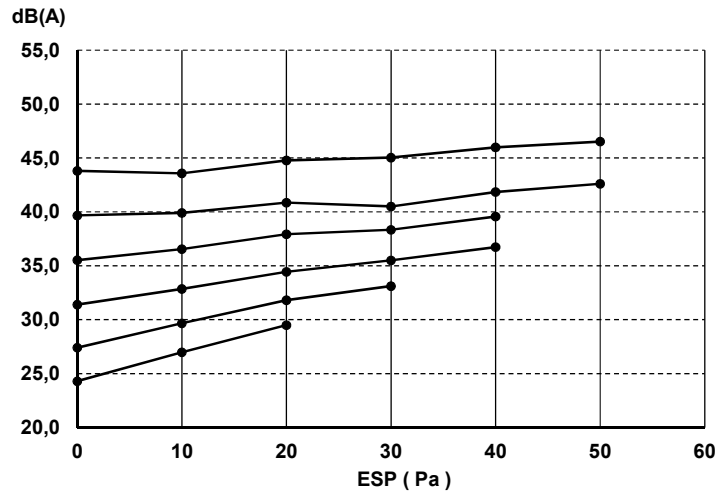
Whole casing

ESP (Pa)	Fan speed					
	6	5	4	3	2	1
	H		M		L	
0	50,0	46,0	42,0	38,0	34,0	31,0
10	49,8	46,2	43,0	39,4	36,2	33,6
20	50,7	46,8	44,2	40,8	38,2	35,9
30	51,5	47,4	45,1	42,0	39,7	
40	52,6	48,3	46,3	43,2		
50	52,9	49,3				



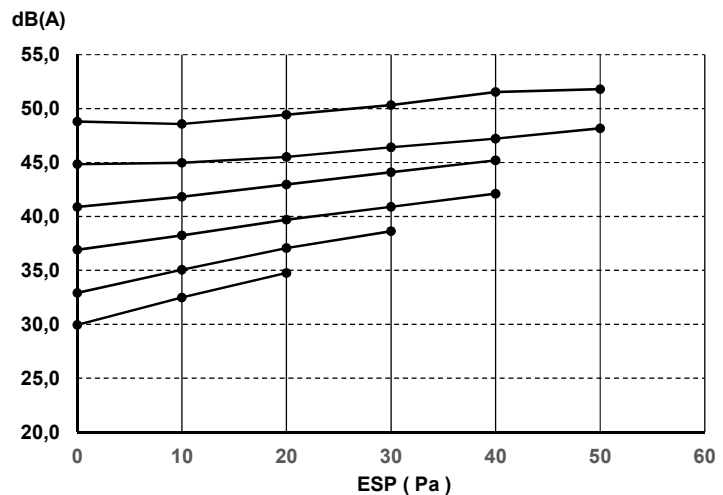
Discharge

ESP (Pa)	Fan speed					
	6	5	4	3	2	1
	H		M		L	
0	43,8	39,7	35,5	31,4	27,4	24,3
10	43,6	39,9	36,6	32,9	29,7	27,0
20	44,8	40,9	37,9	34,4	31,8	29,5
30	45,0	40,5	38,3	35,5	33,1	
40	46,0	41,8	39,6	36,7		
50	46,5	42,6				



Inlet + casing

ESP (Pa)	Fan speed					
	6	5	4	3	2	1
	H		M		L	
0	48,8	44,8	40,9	36,9	32,9	29,9
10	48,6	45,0	41,8	38,2	35,0	32,5
20	49,4	45,5	43,0	39,7	37,1	34,8
30	50,3	46,4	44,1	40,9	38,6	
40	51,5	47,2	45,2	42,1		
50	51,8	48,2				



3D122202A

9 Sound data

9 - 1 Sound Power Spectrum

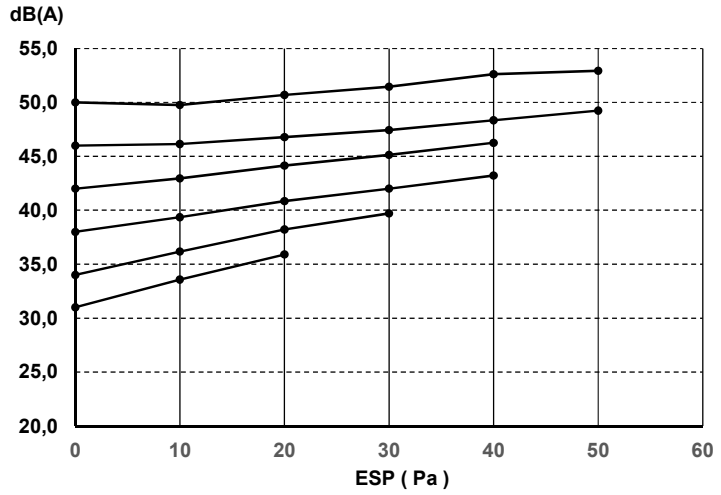
FWE08DAFN5V3(L-R-S-T)
FWE08DATN5V3(L-R-S-T)

9

Sound Power overall (dBA)

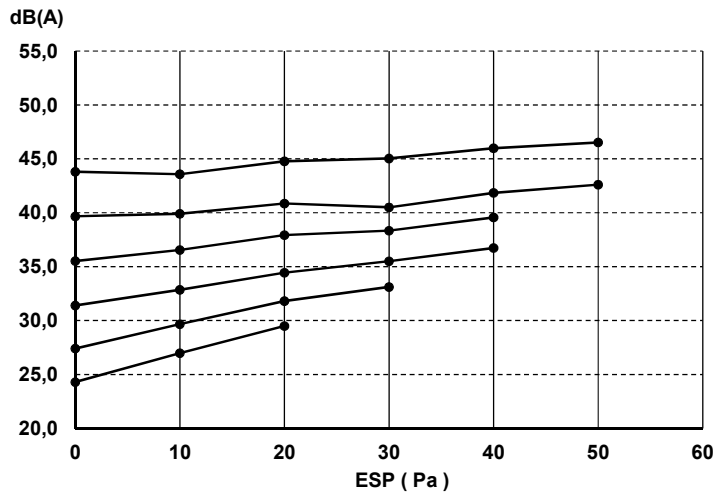
Whole casing

ESP (Pa)	Fan speed					
	6 H	5 M	4	3	2 L	1
0	50,0	46,0	42,0	38,0	34,0	31,0
10	49,8	46,2	43,0	39,4	36,2	33,6
20	50,7	46,8	44,2	40,8	38,2	35,9
30	51,5	47,4	45,1	42,0	39,7	
40	52,6	48,3	46,3	43,2		
50	52,9	49,3				



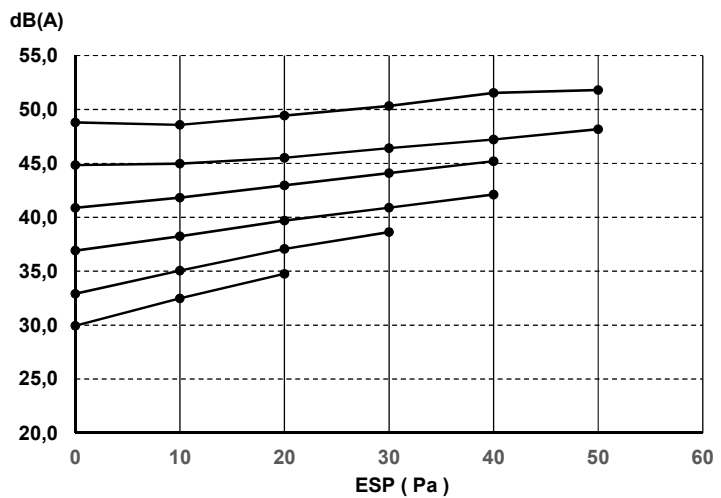
Discharge

ESP (Pa)	Fan speed					
	6 H	5 M	4	3	2 L	1
0	43,8	39,7	35,5	31,4	27,4	24,3
10	43,6	39,9	36,6	32,9	29,7	27,0
20	44,8	40,9	37,9	34,4	31,8	29,5
30	45,0	40,5	38,3	35,5	33,1	
40	46,0	41,8	39,6	36,7		
50	46,5	42,6				



Inlet + casing

ESP (Pa)	Fan speed					
	6 H	5 M	4	3	2 L	1
0	48,8	44,8	40,9	36,9	32,9	29,9
10	48,6	45,0	41,8	38,2	35,0	32,5
20	49,4	45,5	43,0	39,7	37,1	34,8
30	50,3	46,4	44,1	40,9	38,6	
40	51,5	47,2	45,2	42,1		
50	51,8	48,2				



3D122485A

9 Sound data

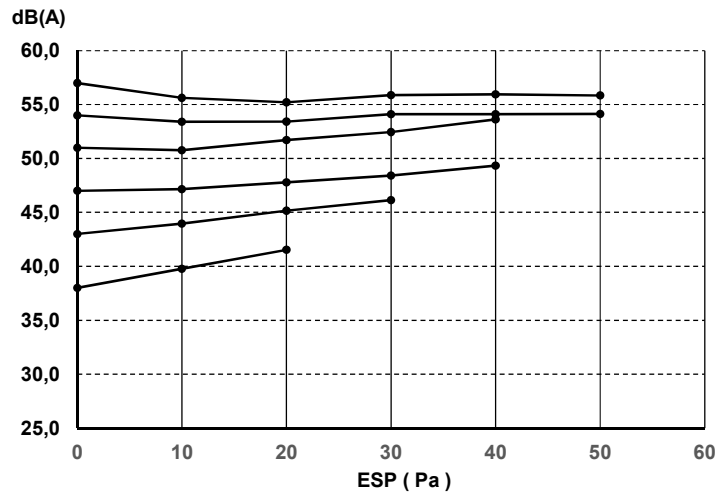
9 - 1 Sound Power Spectrum

FWE10DAFN5V3(L-R-S-T)
FWE10DATN5V3(L-R-S-T)

Sound Power overall (dBA)

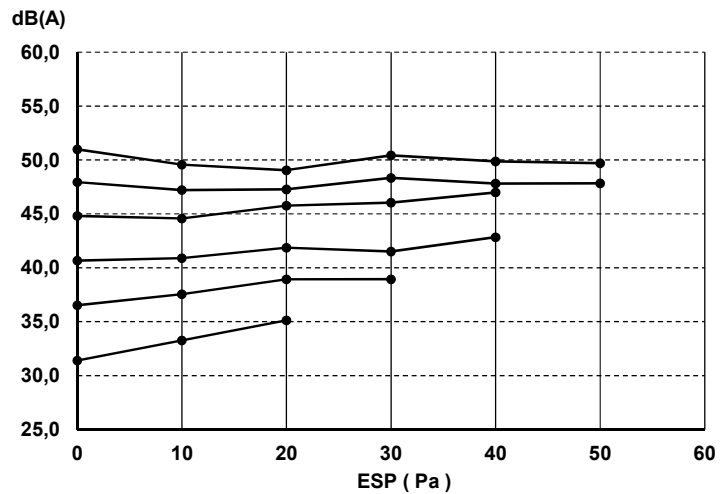
Whole casing

ESP (Pa)	Fan speed					
	6	5	4	3	2	1
	H		M		L	
0	57,0	54,0	51,0	47,0	43,0	38,0
10	55,6	53,4	50,8	47,2	44,0	39,8
20	55,2	53,4	51,7	47,8	45,2	41,5
30	55,9	54,1	52,5	48,4	46,1	
40	56,0	54,1	53,6	49,3		
50	55,9	54,1				



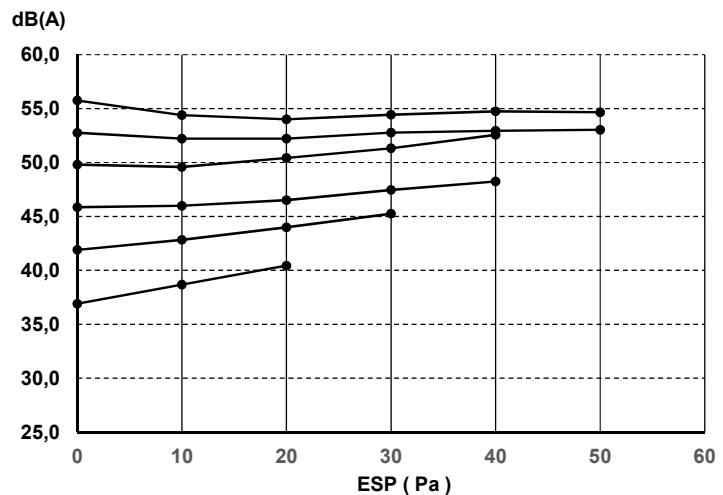
Discharge

ESP (Pa)	Fan speed					
	6	5	4	3	2	1
	H		M		L	
0	51,0	48,0	44,8	40,7	36,5	31,4
10	49,6	47,2	44,6	40,9	37,6	33,3
20	49,1	47,3	45,8	41,9	38,9	35,1
30	50,4	48,3	46,0	41,5	38,9	
40	49,9	47,8	47,0	42,8		
50	49,7	47,8				



Inlet + casing

ESP (Pa)	Fan speed					
	6	5	4	3	2	1
	H		M		L	
0	55,7	52,8	49,8	45,8	41,9	36,9
10	54,4	52,2	49,6	46,0	42,8	38,7
20	54,0	52,2	50,4	46,5	44,0	40,4
30	54,4	52,8	51,3	47,5	45,2	
40	54,7	52,9	52,6	48,2		
50	54,6	53,0				



3D122203A

9 Sound data

9 - 1 Sound Power Spectrum

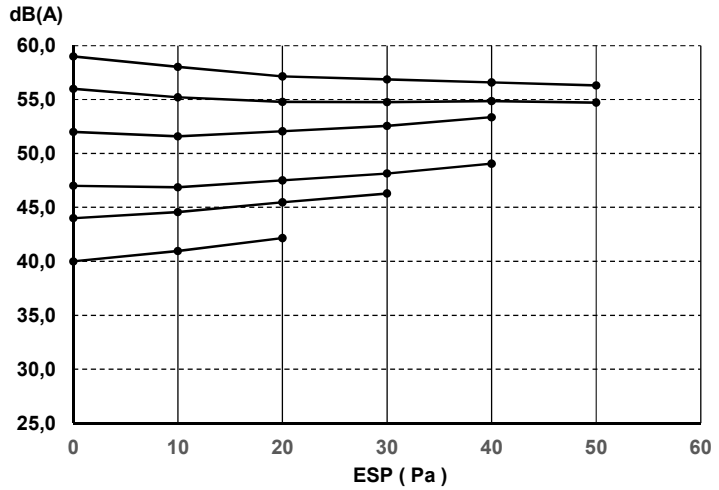
FWE11DAFN5V3(L-R-S-T)
FWE11DATN5V3(L-R-S-T)

9

Sound Power overall (dBA)

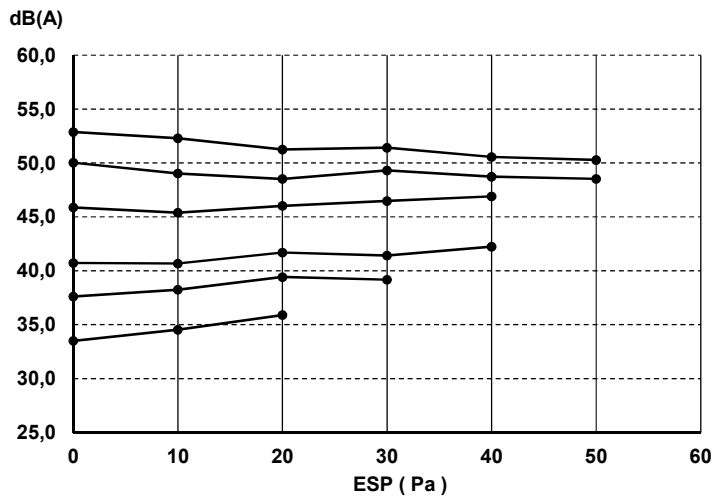
Whole casing

ESP (Pa)	Fan speed					
	6	5	4	3	2	1
	H		M		L	
0	59,0	56,0	52,0	47,0	44,0	40,0
10	58,0	55,2	51,6	46,9	44,6	41,0
20	57,2	54,8	52,1	47,5	45,5	42,2
30	56,9	54,8	52,6	48,2	46,3	
40	56,6	54,9	53,4	49,1		
50	56,3	54,7				



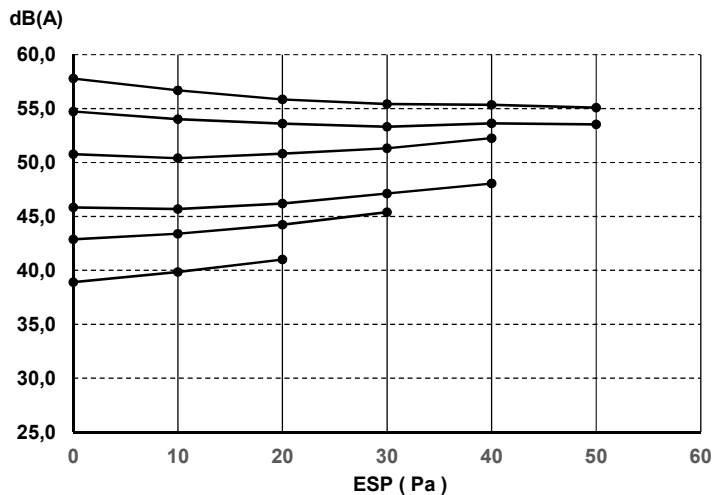
Discharge

ESP (Pa)	Fan speed					
	6	5	4	3	2	1
	H		M		L	
0	52,9	50,0	45,9	40,7	37,6	33,5
10	52,3	49,0	45,4	40,7	38,2	34,5
20	51,3	48,5	46,0	41,7	39,4	35,9
30	51,4	49,3	46,5	41,4	39,2	
40	50,6	48,7	46,9	42,2		
50	50,3	48,5				



Inlet + casing

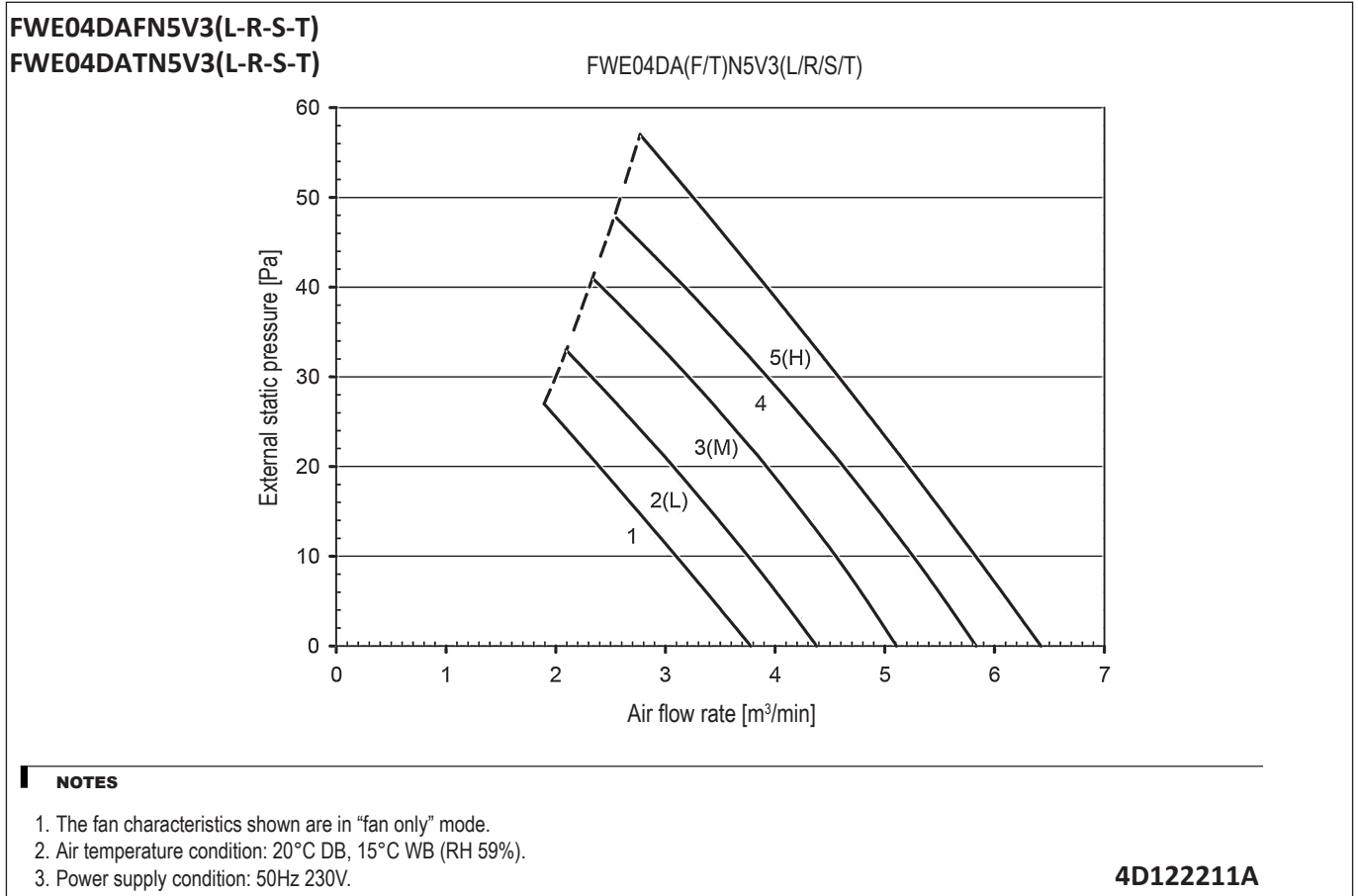
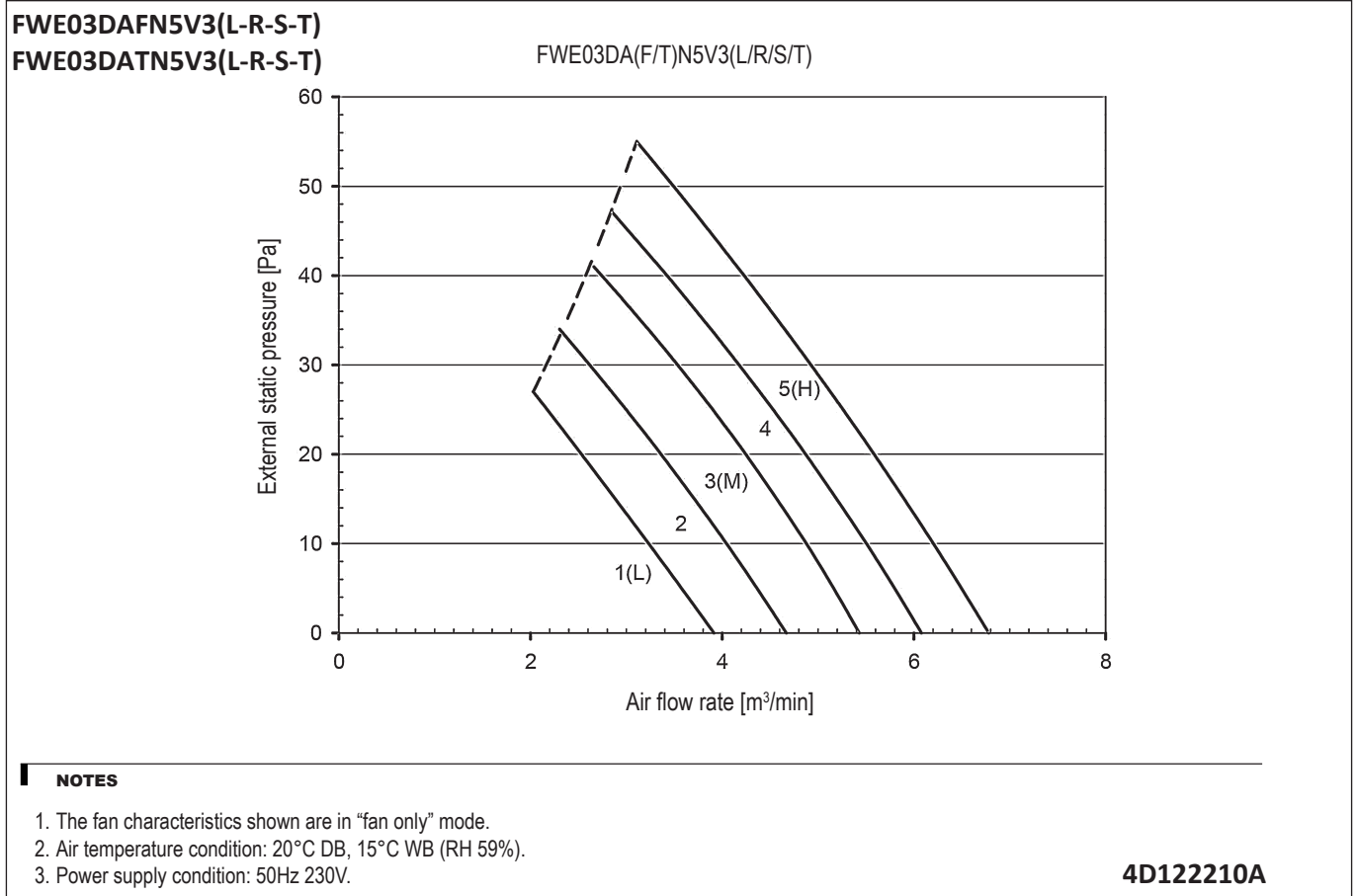
ESP (Pa)	Fan speed					
	6	5	4	3	2	1
	H		M		L	
0	57,8	54,7	50,8	45,8	42,9	38,9
10	56,7	54,0	50,4	45,7	43,4	39,8
20	55,9	53,6	50,8	46,2	44,2	41,0
30	55,4	53,3	51,3	47,1	45,4	
40	55,4	53,6	52,3	48,0		
50	55,1	53,5				



3D122205A

10 Fan characteristics

10 - 1 Fan Characteristics



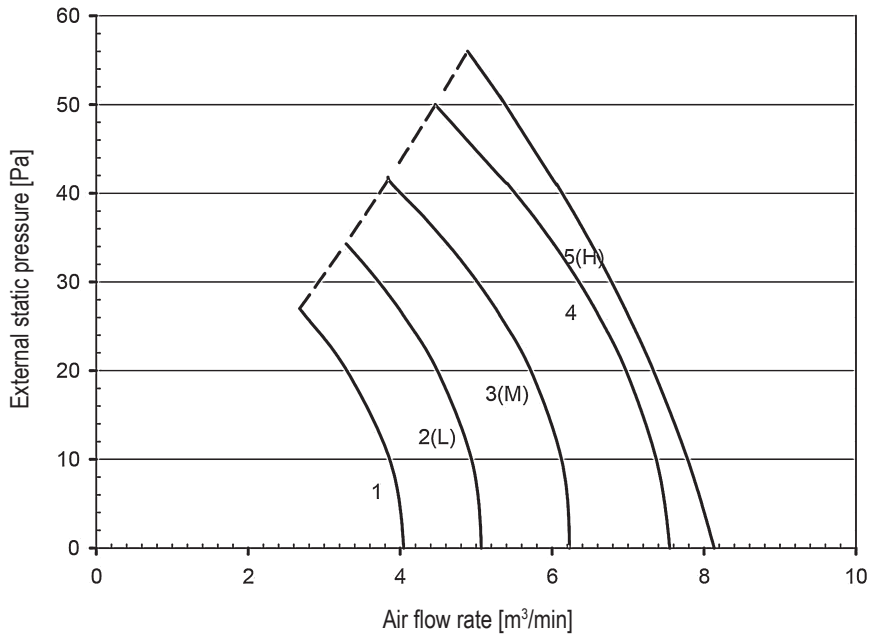
10 Fan characteristics

10 - 1 Fan Characteristics

10

FWE05DAFN5V3(L-R-S-T)
FWE05DATN5V3(L-R-S-T)

FWE05DA(F/T)N5V3(L/R/S/T)



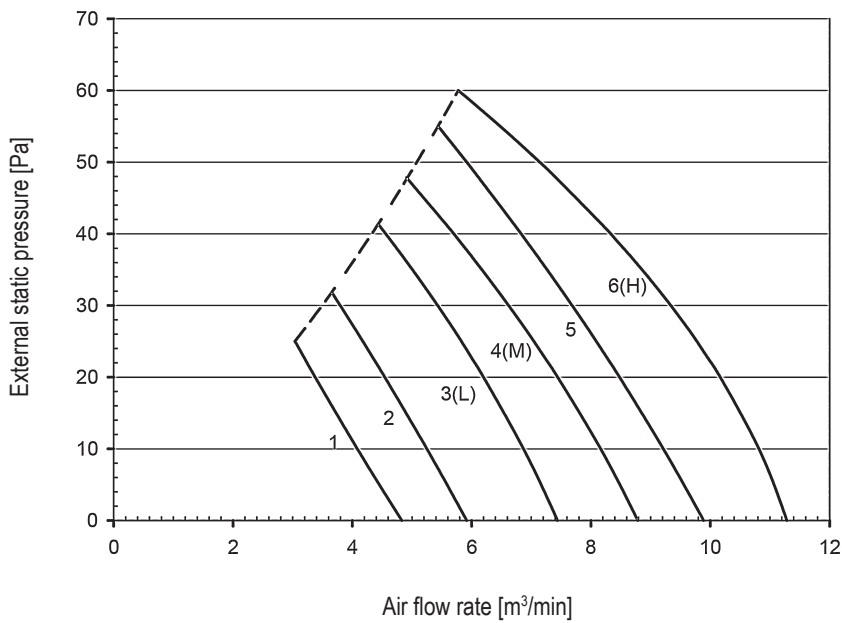
NOTES

1. The fan characteristics shown are in "fan only" mode.
2. Air temperature condition: 20°C DB, 15°C WB (RH 59%).
3. Power supply condition: 50Hz 230V.

4D122212A

FWE06DAFN5V3(L-R-S-T)
FWE06DATN5V3(L-R-S-T)

FWE06DA(F/T)N5V3(L/R/S/T)



NOTES

1. The fan characteristics shown are in "fan only" mode.
2. Air temperature condition: 20°C DB, 15°C WB (RH 59%).
3. Power supply condition: 50Hz 230V.

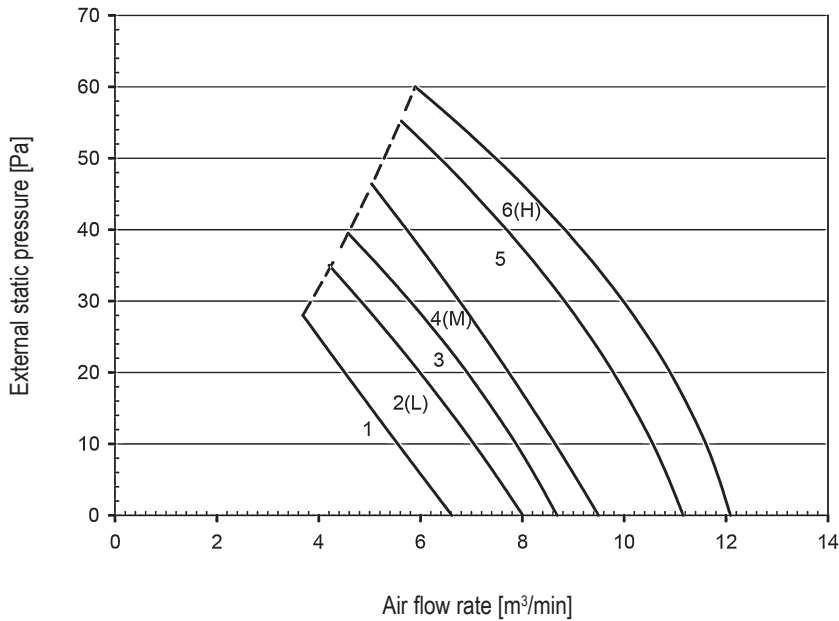
4D122213A

10 Fan characteristics

10 - 1 Fan Characteristics

FWE07DAFN5V3(L-R-S-T)
FWE07DATN5V3(L-R-S-T)

FWE07DA(F/T)N5V3(L/R/S/T)



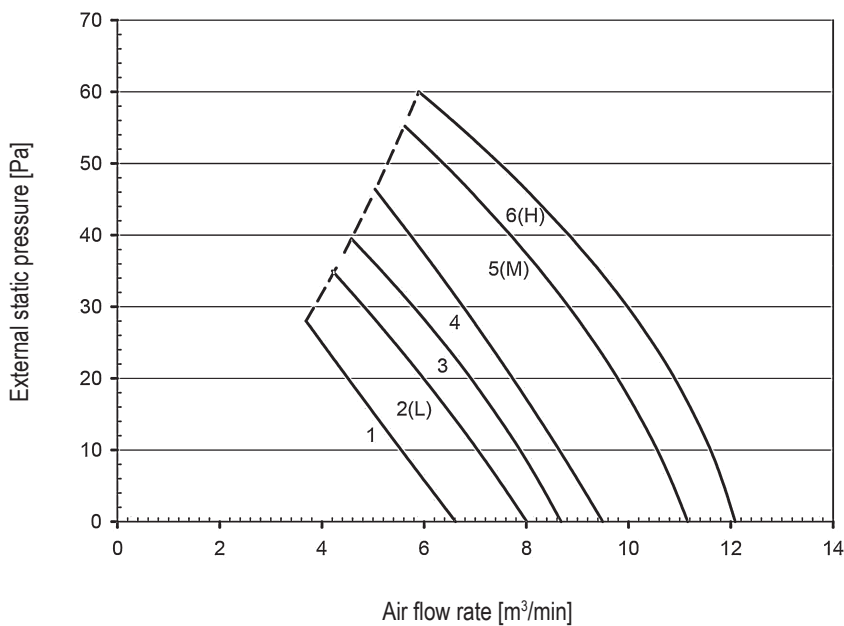
NOTES

1. The fan characteristics shown are in "fan only" mode.
2. Air temperature condition: 20°C DB, 15°C WB (RH 59%).
3. Power supply condition: 50Hz 230V.

4D122214A

FWE08DAFN5V3(L-R-S-T)
FWE08DATN5V3(R-R-S-T)

FWE08DA(F/T)N5V3(L/R/S/T)



NOTES

1. The fan characteristics shown are in "fan only" mode.
2. Air temperature condition: 20°C DB, 15°C WB (RH 59%).
3. Power supply condition: 50Hz 230V.

4D122548A

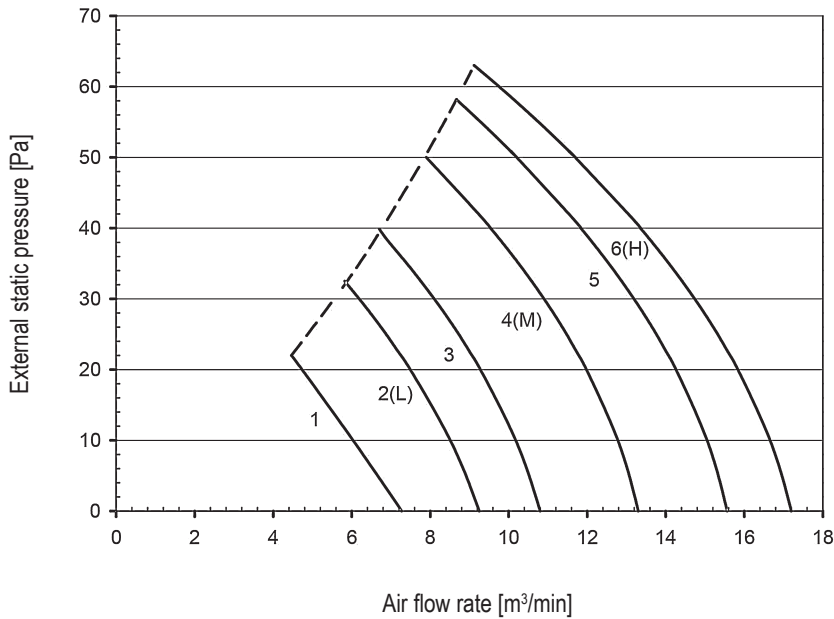
10 Fan characteristics

10 - 1 Fan Characteristics

10

FWE10DAFN5V(L-R-S-T)
FWE10DATN5V(L-R-S-T)

FWE10DA(F/T)N5V3(L/R/S/T)



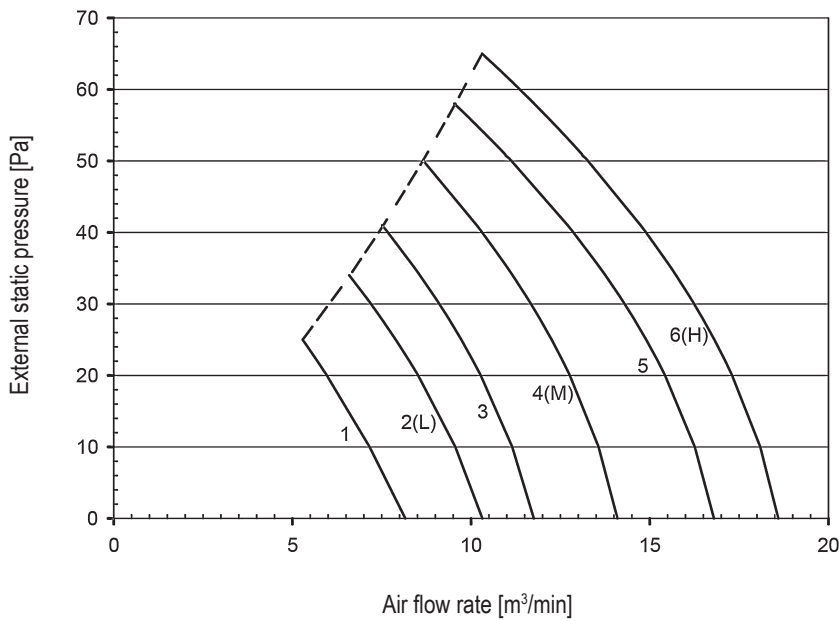
NOTES

1. The fan characteristics shown are in "fan only" mode.
2. Air temperature condition: 20°C DB, 15°C WB (RH 59%).
3. Power supply condition: 50Hz 230V.

4D122215A

FWE11DAFN5V3(L-R-S-T)
FWE11DATN5V3(L-R-S-T)

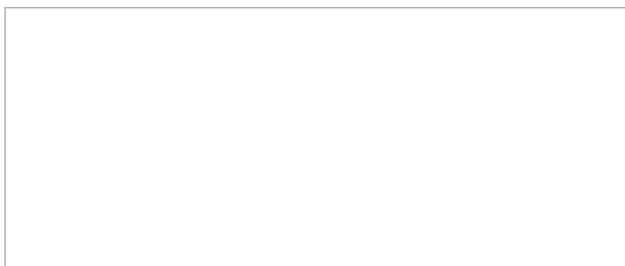
FWE11DA(F/T)N5V3(L/R/S/T)



NOTES

1. The fan characteristics shown are in "fan only" mode.
2. Air temperature condition: 20°C DB, 15°C WB (RH 59%).
3. Power supply condition: 50Hz 230V.

4D122216A



EEEDEN22

05/2022



The present publication is drawn up by way of information only and does not constitute an offer binding upon Daikin Europe N.V. / Daikin Central Europe HandelsGmbH. Daikin Europe N.V. / Daikin Central Europe HandelsGmbH have compiled the content of this publication to the best of their knowledge. No express or implied warranty is given for the completeness, accuracy, reliability or fitness for particular purpose of its content and the products and services presented therein. Specifications are subject to change without prior notice. Daikin Europe N.V. / Daikin Central Europe HandelsGmbH explicitly rejects any liability for any direct or indirect damage, in the broadest sense, arising from or related to the use and/or interpretation of this publication. All content is copyrighted by Daikin Europe N.V.