



# Installation manual

## **DX Coil / Water Coil Droplet Eliminator Compact L**

D-EIMOC0003306-24\_00EN

› Compact L

REV	00
DATE	June 2024
REPLACES	

# 1 Important warnings



The pictogram shows a situation of immediate danger or a dangerous situation that might cause injuries or death.



The pictogram shows that it is necessary to adopt suitable behaviour in order to avoid jeopardising staff safety and cause damages to the equipment.



The pictogram shows particularly important technical information that should be taken into consideration by the people installing or using the equipment.



Read this manual carefully before installation and keep it for any further future consultation by the various operators. Do not remove, tear out or rewrite any part of this manual.



**Failure to follow these instructions may cause damage and injuries, even fatal, voids the warranty and relieves the Manufacturer of any liability.**



All installation, assembly, electrical connections to the mains and ordinary/extraordinary maintenance must be performed **only by technicians complying with the legal requirements**, after turning off the unit and using personal protective equipment (i.e. gloves, protective goggles, etc.), in compliance with the regulations in force in the country the equipment is to be used in and the laws on safety in the workplace.



Installation, use or maintenance other than those specified in the manual may cause damage, injury or death, invalidate the warranty and relieve the Manufacturer of all liability.



Use protective clothing and suitable equipment while handling or installing the equipment, in order to prevent accidents and safeguard your own and other people's safety. Individuals not assigned to installation or maintenance are NOT allowed to stand or pass through the work area while the unit is assembled.



**Before carrying out any installation, disconnect the equipment from the power supply and wait at least 120 seconds before carrying out any operation.**



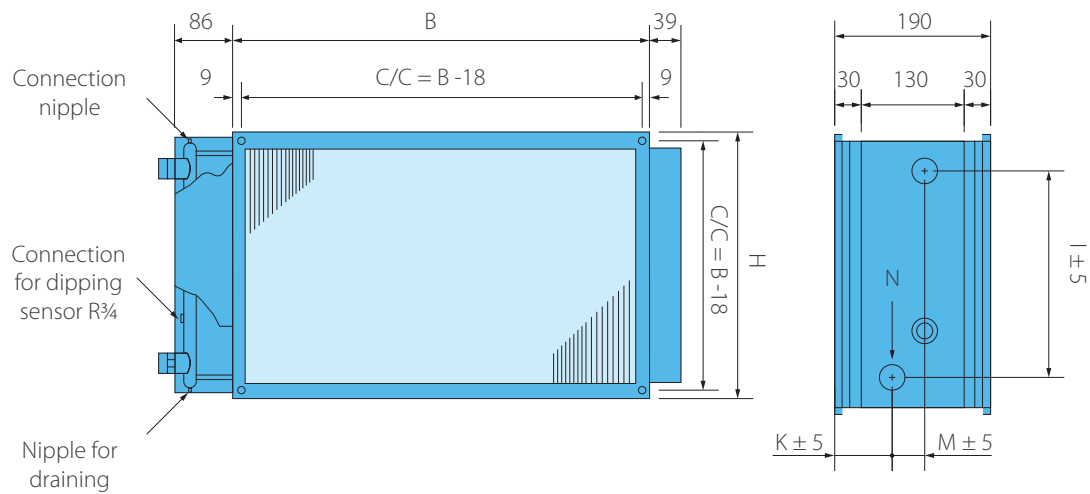
It is the responsibility of the user/installer to check the static and dynamic stability relative to the installation and to arrange environments so that **people who are not competent or authorised DO NOT have access to the unit or to its controls.**

## 2

# Technical data

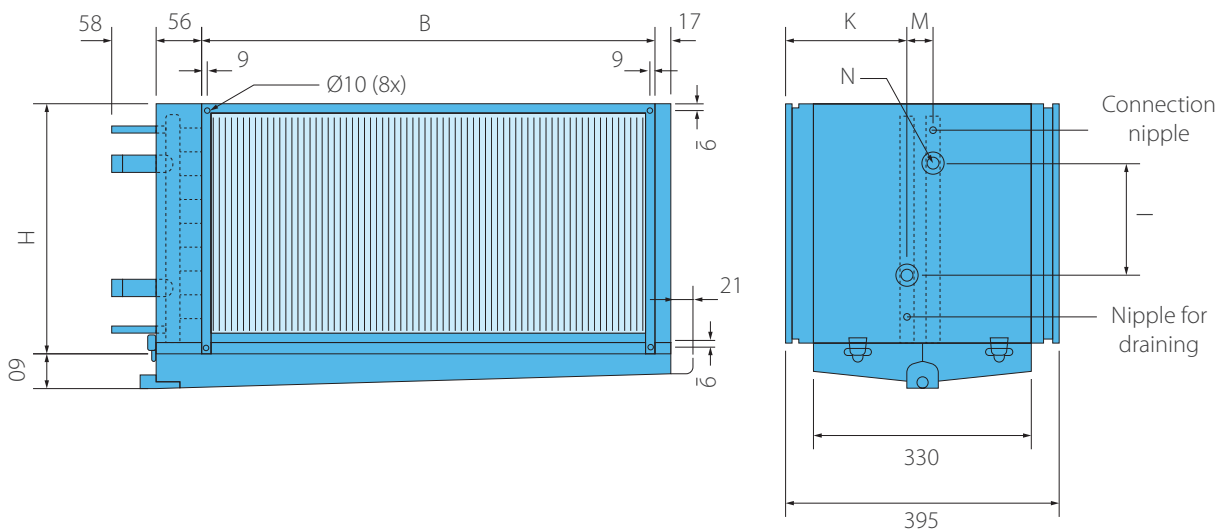
## Water coils | Heating

Size	Material name	B [mm]	H [mm]	I [mm]	K [mm]	M [mm]	N conn. R	Weight	Row of coil
02	ALD02HWUA	288	188	113	84	22	1/2"	4,8	2
03	ALD03HWUA	438	238	150	63	43	3/4"	5,0	2
04-05	ALD05HWUA	538	288	200	63	43	3/4"	7,0	2
06-07	ALD07HWUA	738	438	350	61	47	1"	10,5	2



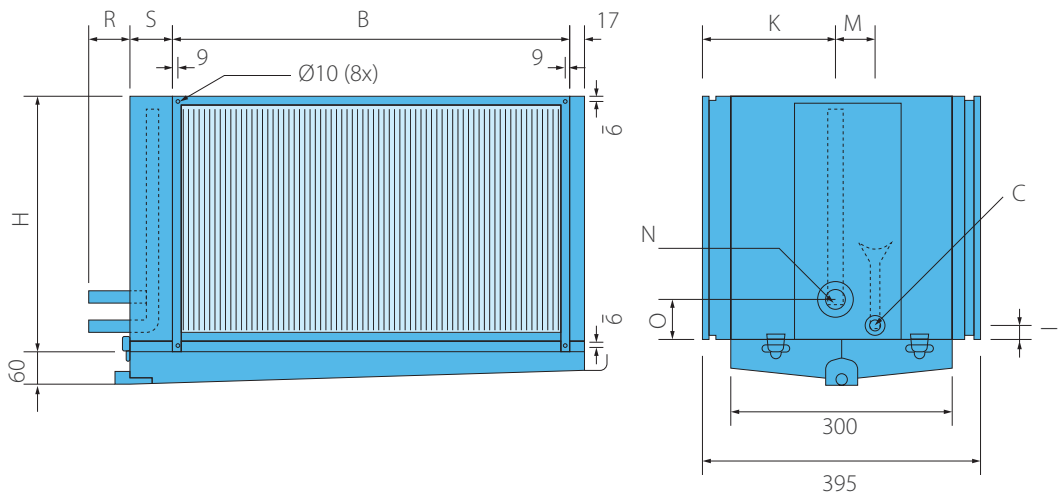
## Water coils | Cooling

Size	Material name	B [mm]	H [mm]	I [mm]	K [mm]	M [mm]	N conn. R	Droplet Eliminator	Weight	Row of coil
02	ALD02CWSA	288	188	70	165	65	3/4"	ALD02DEA	5,0	4
03	ALD03CWSA	438	238	70	176	43	3/4"	ALD03DEA	11,8	4
04-05	ALD05CWSA	538	338	175	176	43	3/4"	ALD05DEA	15,3	4
06-07	ALD07CWSA	738	438	250	170	55	1"	ALD07DEA	24,3	4



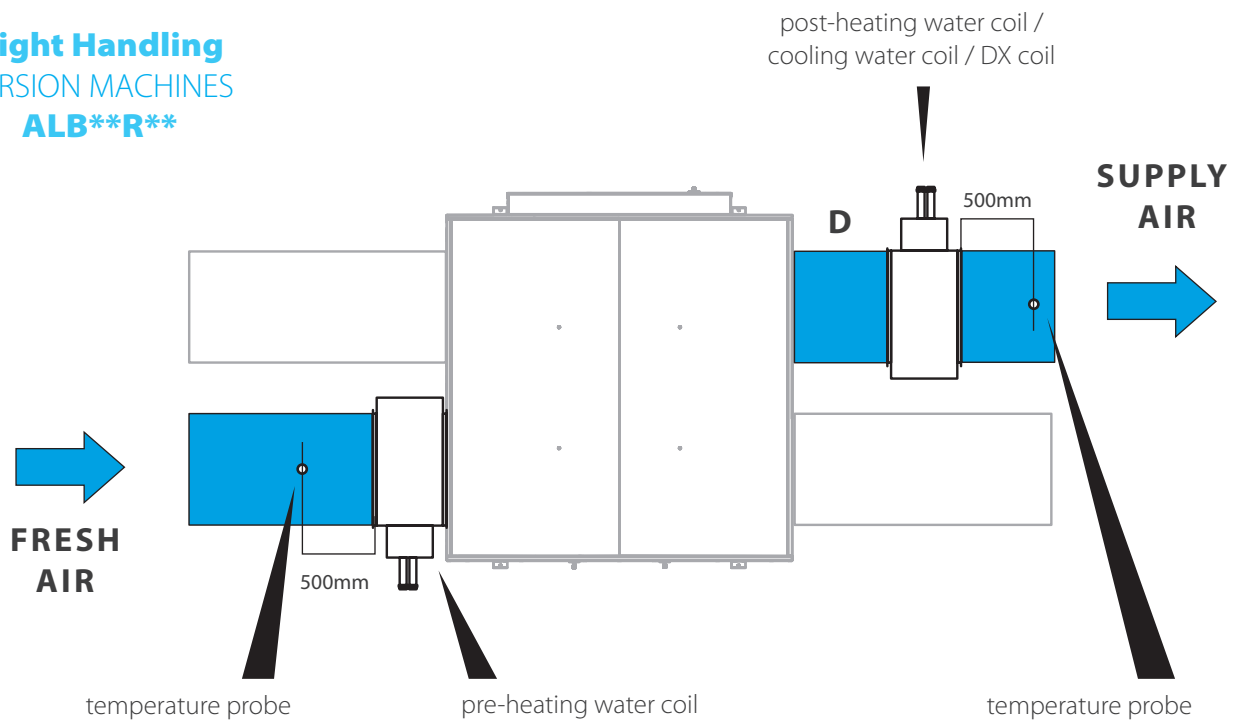
# DX coils

Size	Material name	B [mm]	H [mm]	S [mm]	R [mm]	I [mm]	O [mm]	K [mm]	M [mm]	NØ	CØ	Inner pipe volume, l	Droplet Eliminator	Weight	Row of coil
04-05	ALD05CDSA	538	338	56	70	40	85	165	67	5/8"	3/8"	1.4	ALD05DEA	16,2	3
06-07	ALD07CDSA	738	438	56	70	40	85	165	67	5/8"	3/8"	2.5	ALD07DEA	22,8	3

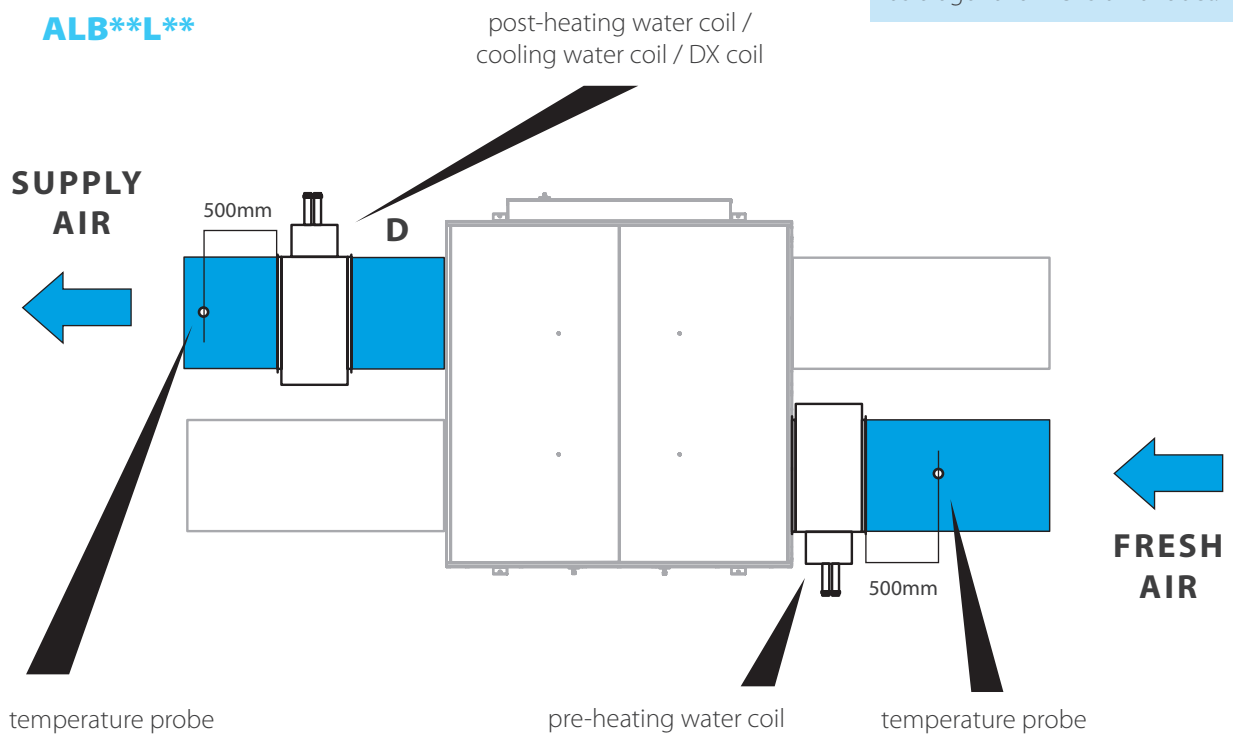


# 3 Installation

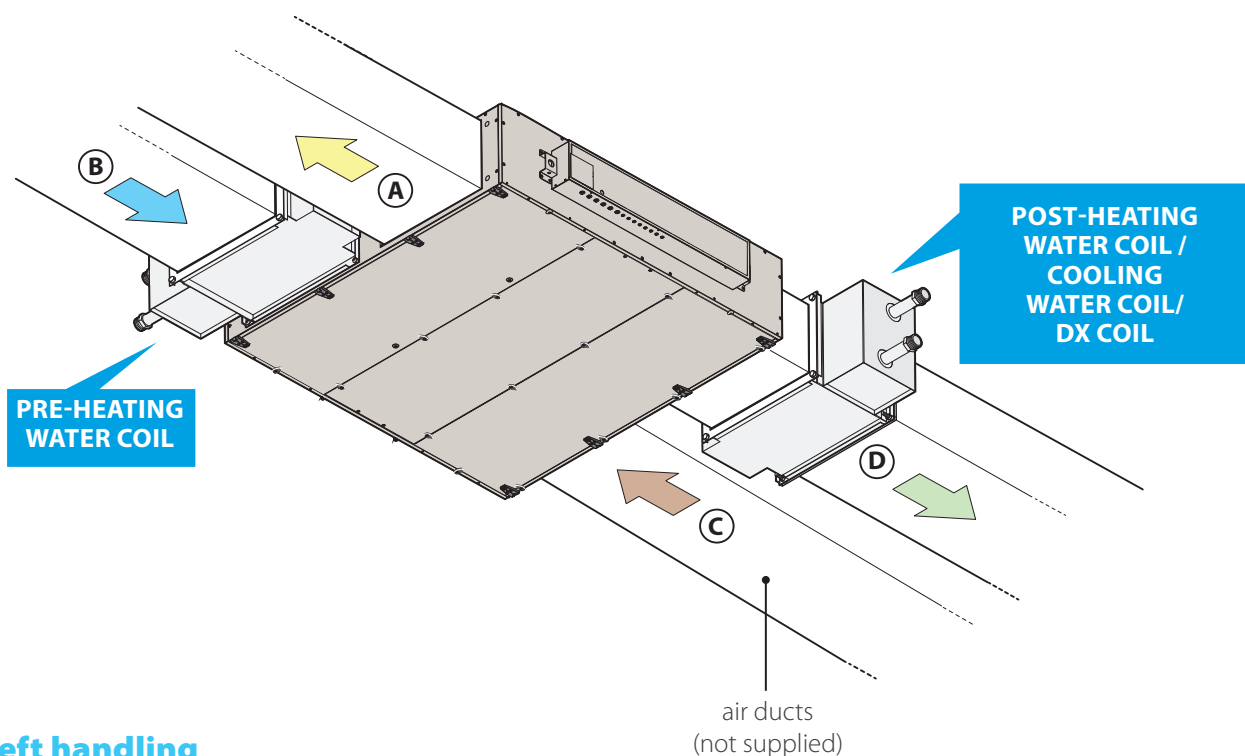
## Right Handling VERSION MACHINES ALB\*\*R\*\*



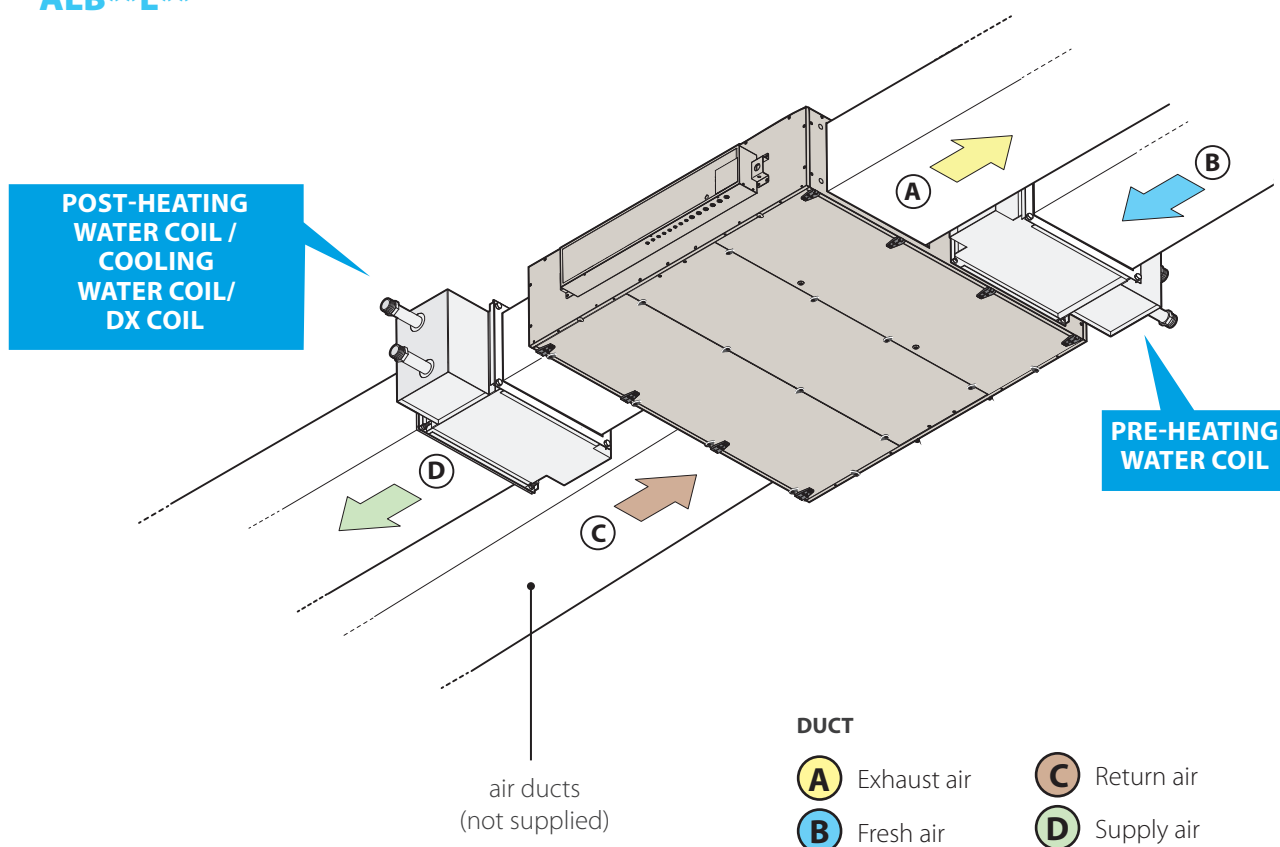
## Left handling VERSION MACHINES ALB\*\*L\*\*

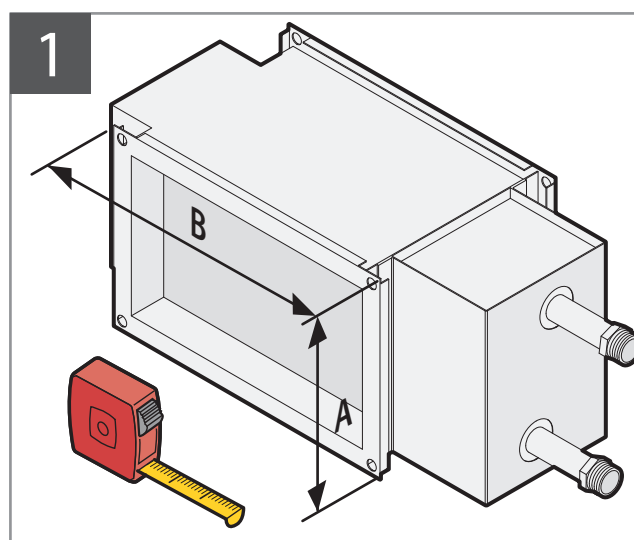
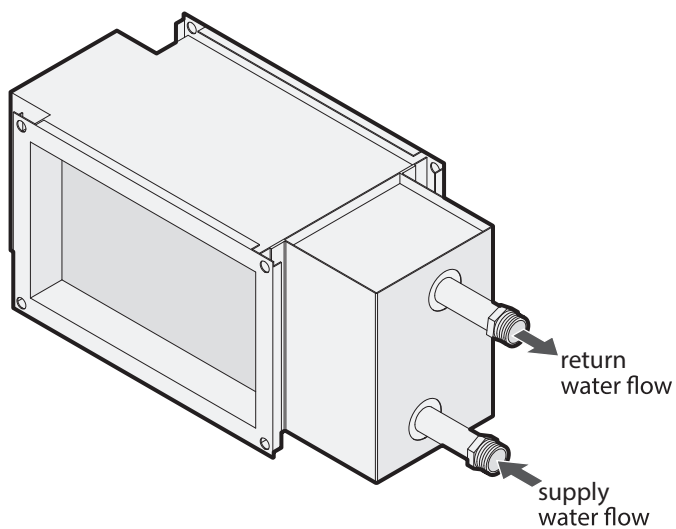


**Right Handling**  
VERSION MACHINES  
**ALB\*\*R\*\***



**Left handling**  
VERSION MACHINES  
**ALB\*\*L\*\***





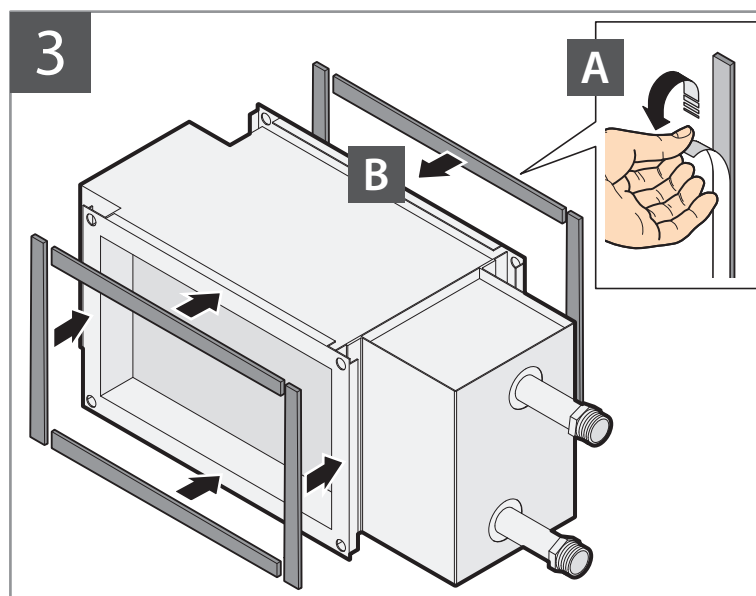
2

**NOT SUPPLIED**

Size	A	B
02	150 mm	250 mm
03	200 mm	400 mm
04-05	300 mm	500 mm
06-07	400 mm	700 mm

Diagram showing the coil layout with dimensions A and B, and the formula  $4A + 4B$ .

Size	A	B
02	150 mm	250 mm
03	200 mm	400 mm
04-05	300 mm	500 mm
06-07	400 mm	700 mm



4

**A** Connection between Coil and unit needs only screws

Diagram showing the coil being secured to the unit frame with screws (x4).

**Compact L**  
02-05 ▶ M5  
06-07 ▶ M6

**B** Connection between Coil and duct needs screws and bolts

Diagram showing the coil being secured to the duct with screws and bolts (x4).

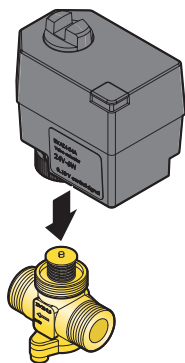
Not provided  
L min 1m

**Compact L**  
02-05 ▶ M5  
06-07 ▶ M6

### 3 Installation of coils

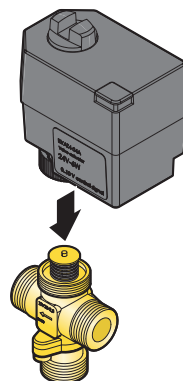
1

ATE00AMVA



2-WAY

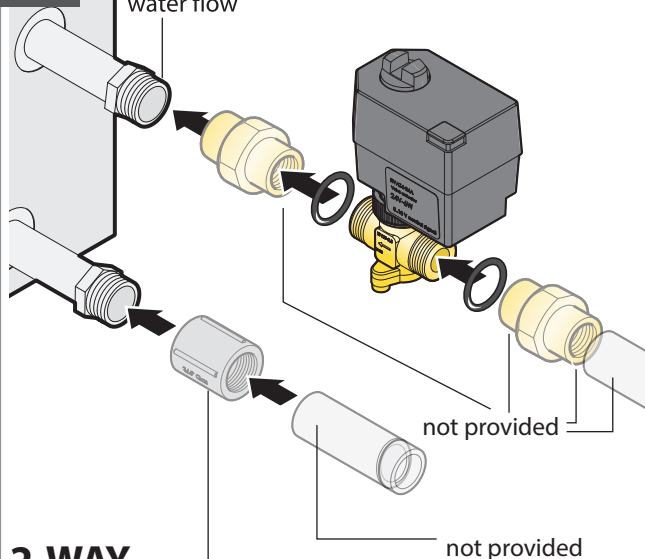
ATE00AMVA



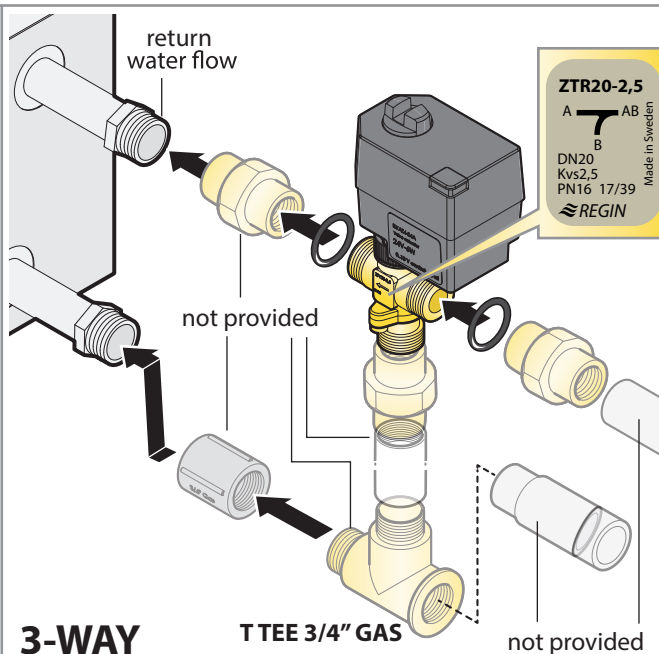
3-WAY

2

return  
water flow



2-WAY



3-WAY

Electrical Wiring as per wiring diagram

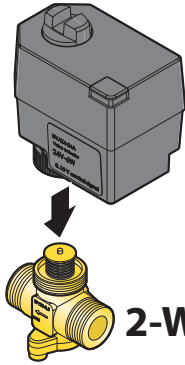
Size	water valves		valve DN [inch]	coil DN [inch]
	2way	3way		
02	ALV02CW2A	ALV02CW3A	1/2	3/4
03	ALV03CW2A	ALV03CW3A	1/2	3/4
04-05	ALV05CW2A	ALV05CWA	3/4	3/4
06-07	ALV07CW2A	ALV07CW2A	3/4	1

#### 4 Heating water coil valve (water coils only)



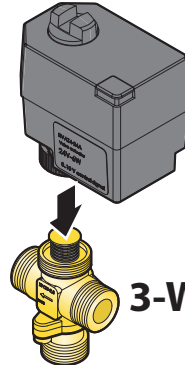
1

ATE00AMVA



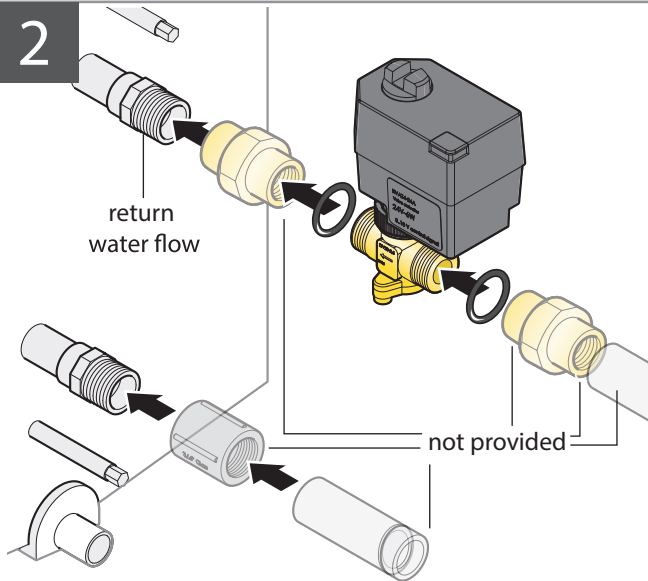
2-WAY

ATE00AMVA

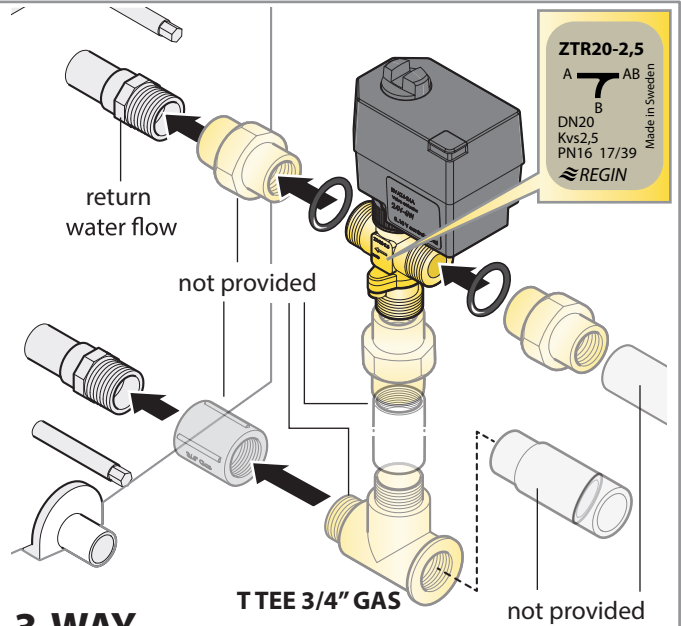


3-WAY

2



2-WAY

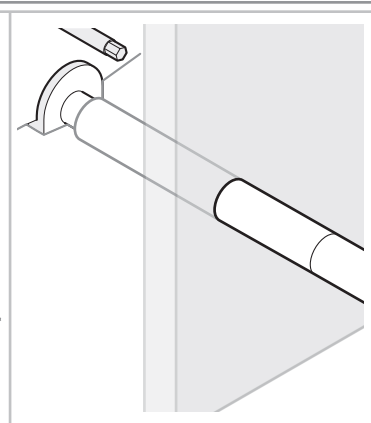
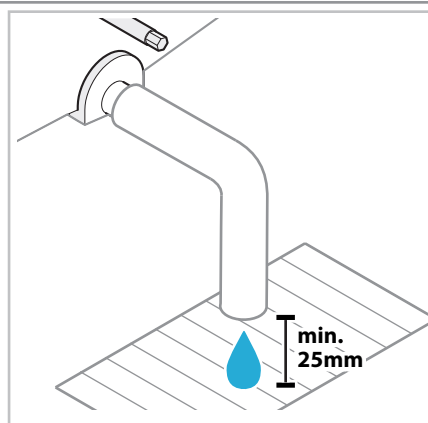
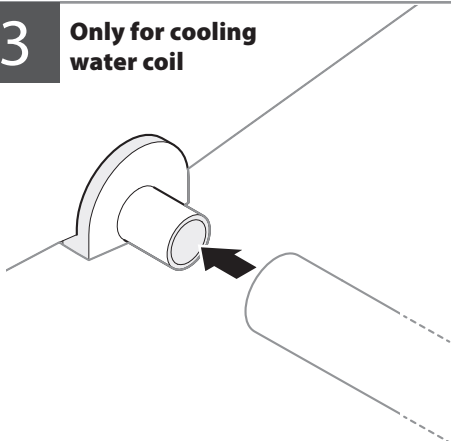


3-WAY

ZTR20-2,5  
A T AB  
B  
DN20  
Kvs2,5  
PN16 17/39  
REGIN  
Made in Sweden

3

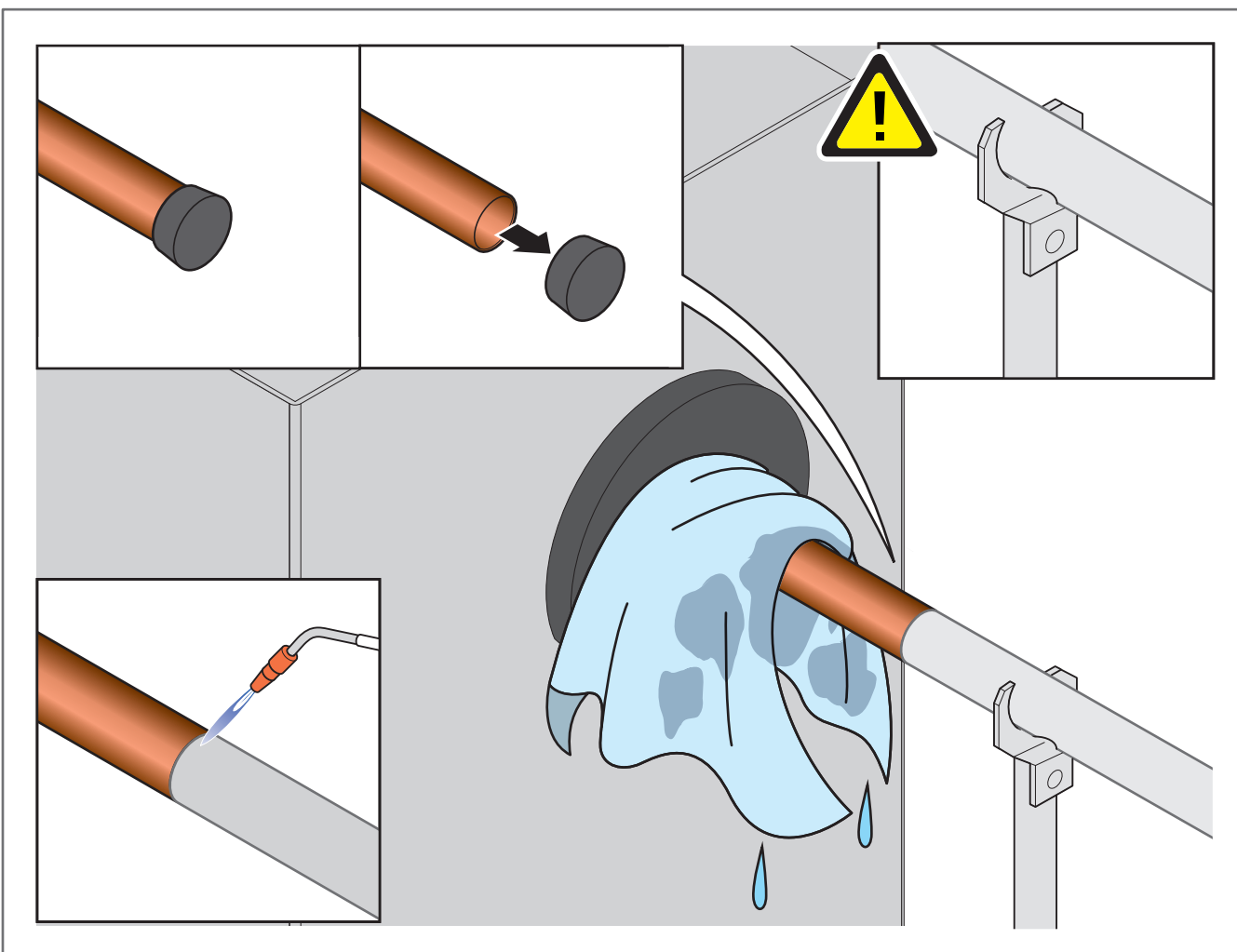
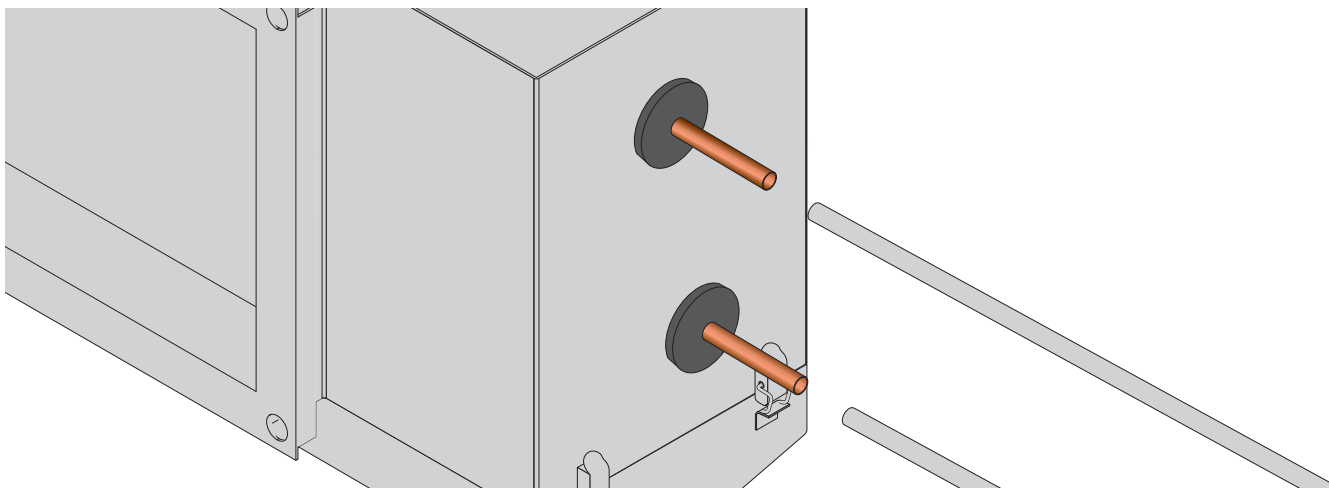
Only for cooling  
water coil



Electrical Wiring as per wiring diagram

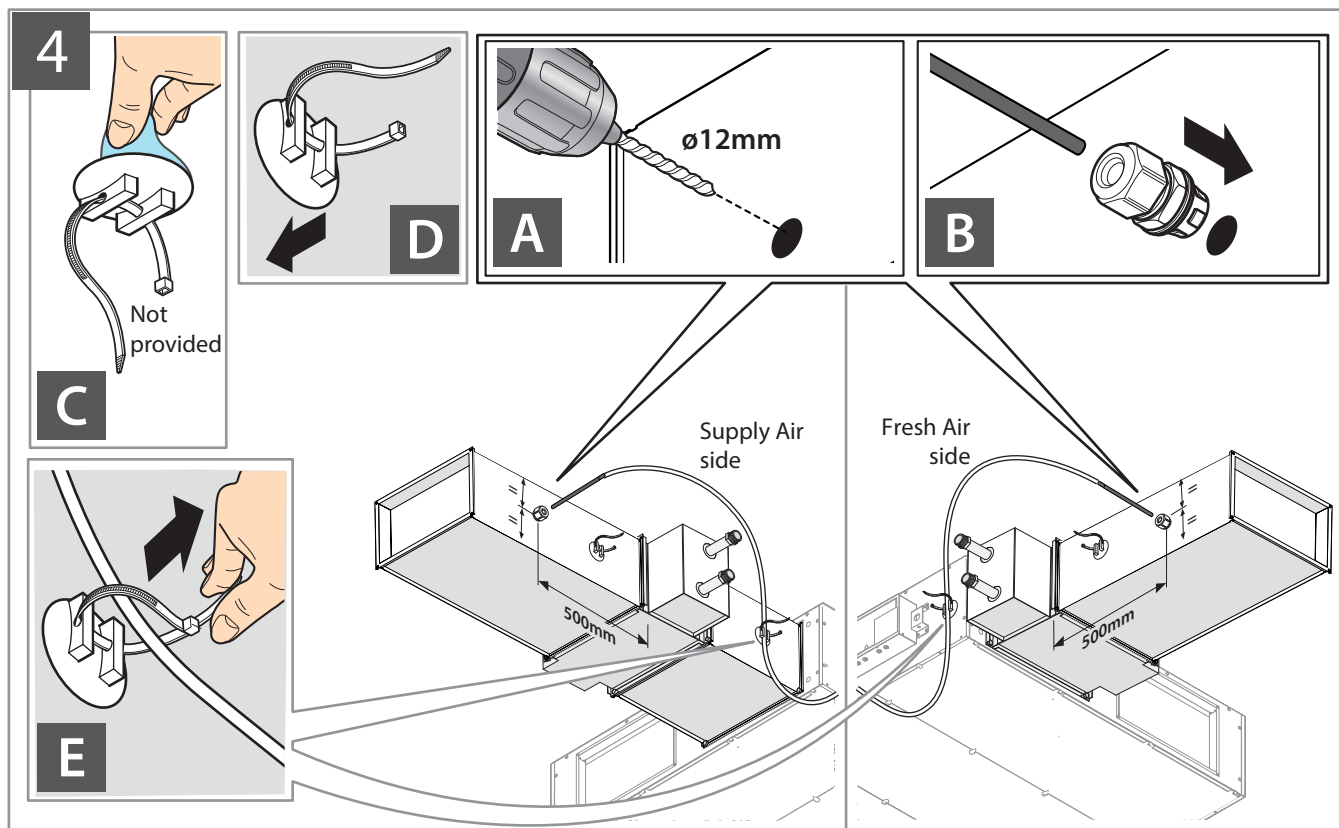
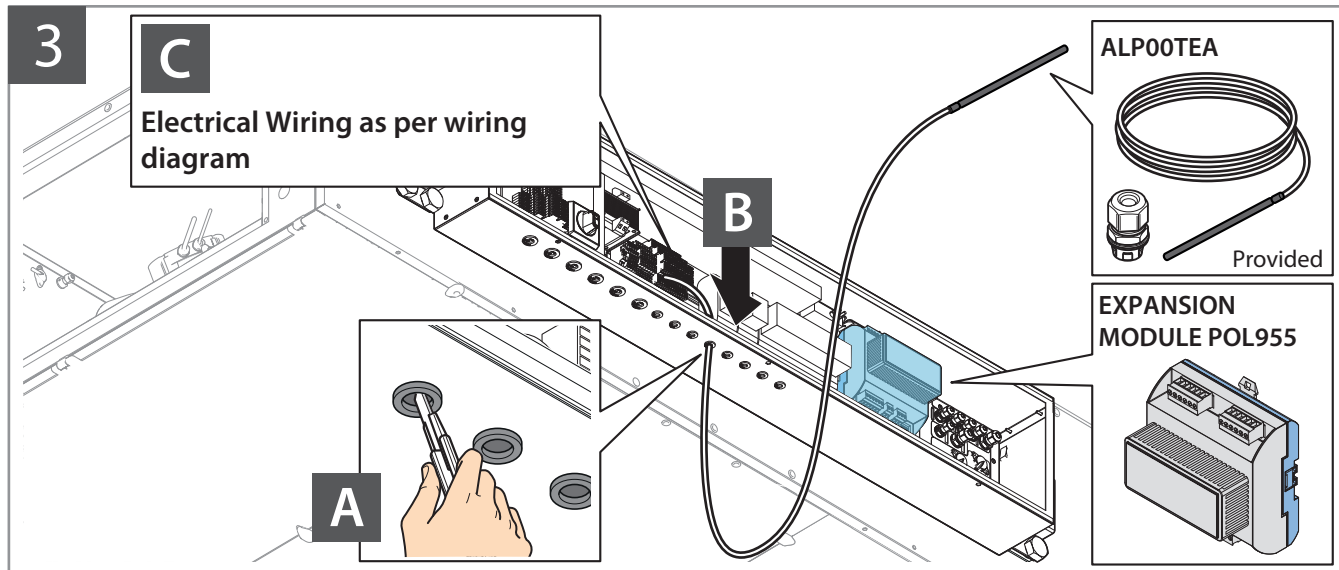
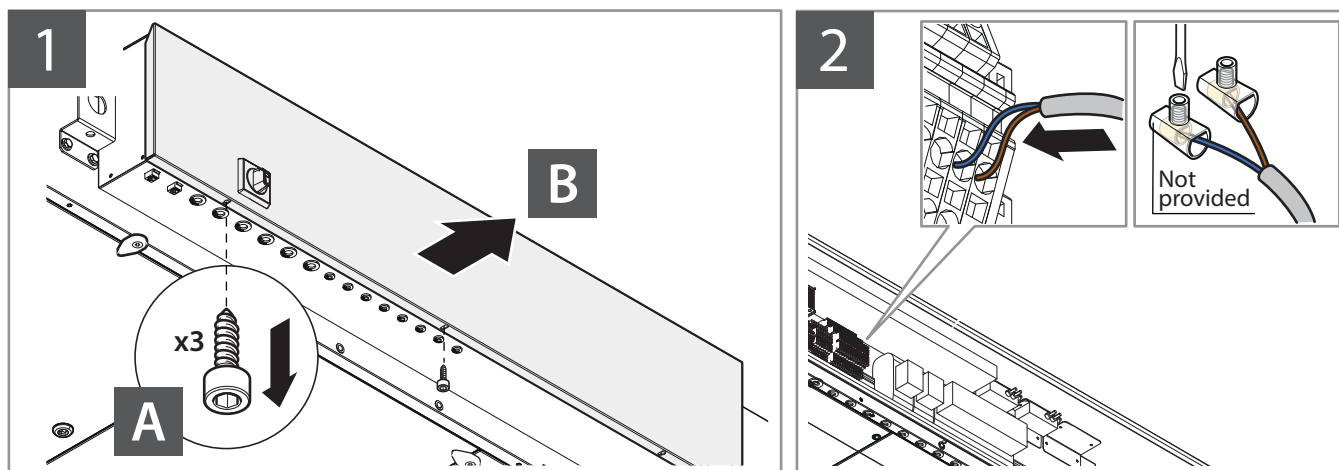
Size	water valves		valve DN [inch]	coil DN [inch]
	2way	3way		
02	ALV02CW2A	ALV02CW3A	1/2	1/2
03	ALV03CW2A	ALV03CW3A	1/2	3/4
04-05	ALV05CW2A	ALV05CWA	3/4	3/4
06-07	ALV07CW2A	ALV07CW2A	3/4	1

5 Cooling water coil valve (water coils only)

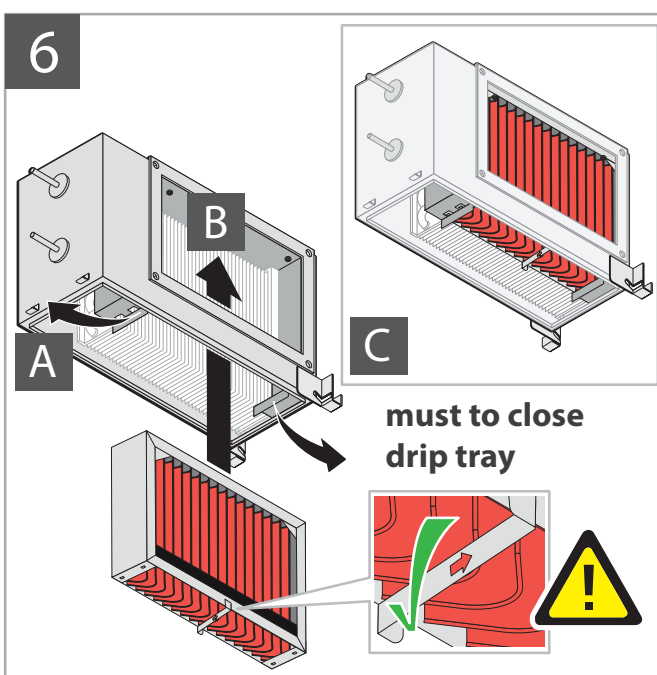
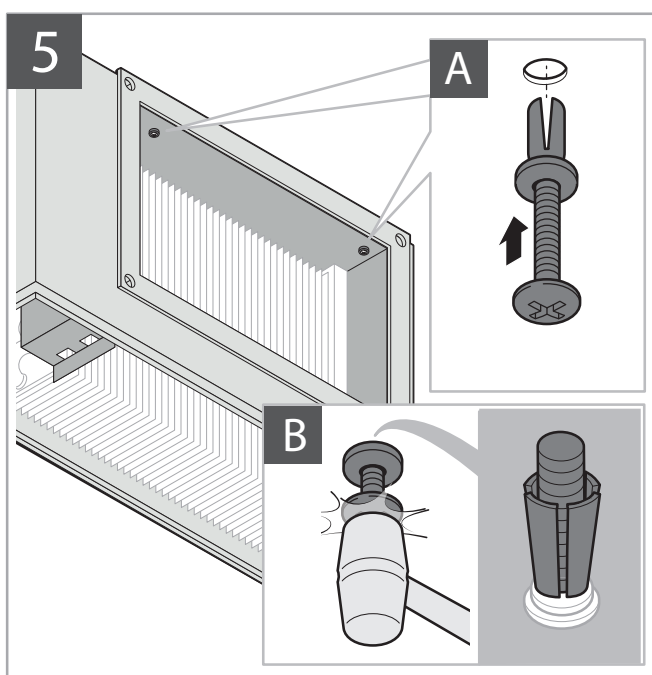
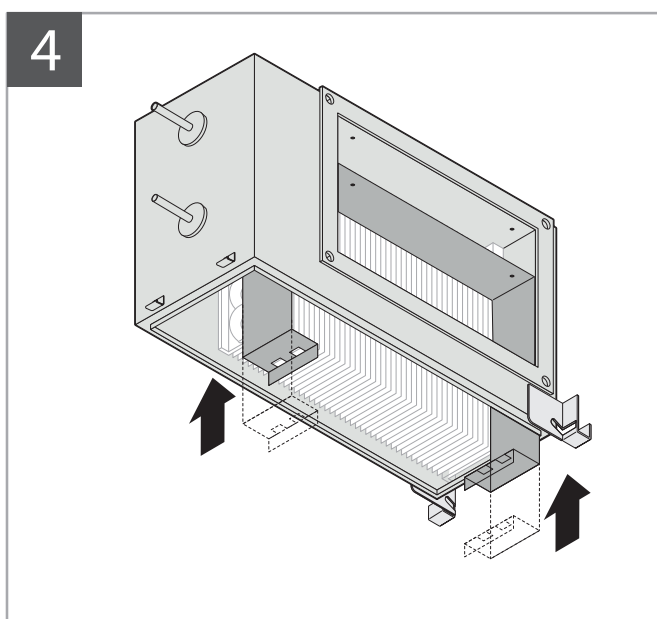
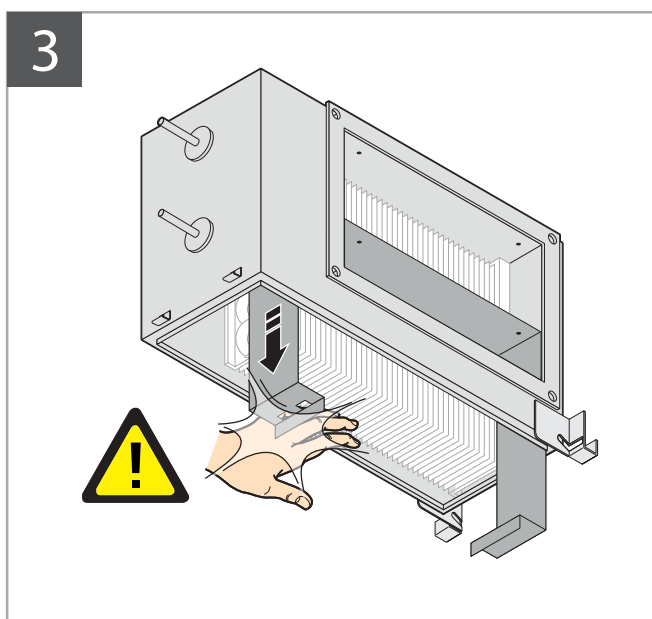
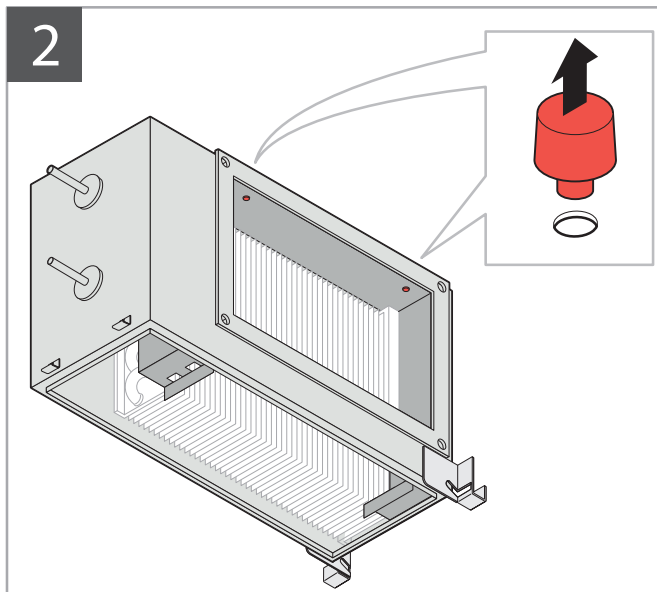
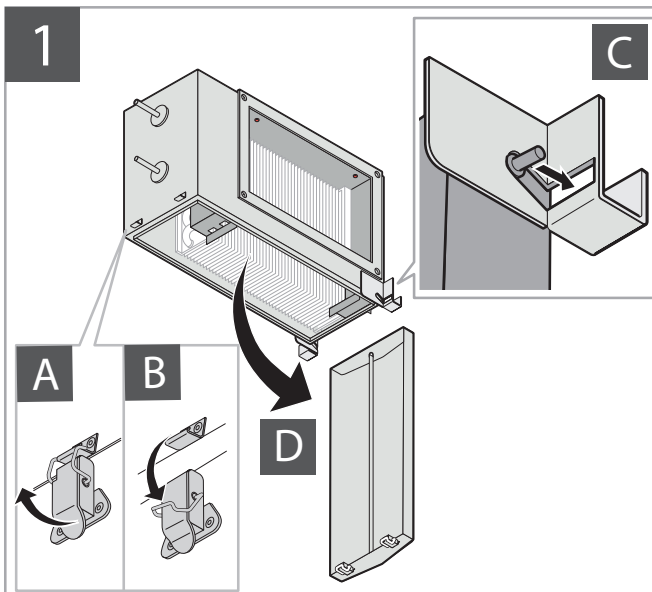


Size	Coil	Volume	Gas conn. DN (inch)	Liquid conn. DN (inch)
04-05	ALD05CDSA	1,4	5/8	3/8
06-07	ALD07CDSA	2,5	5/8	3/8

## 5 DX Coil connection (DX coils only)



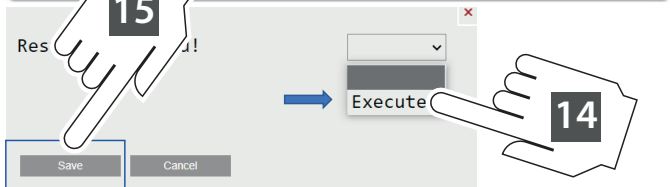
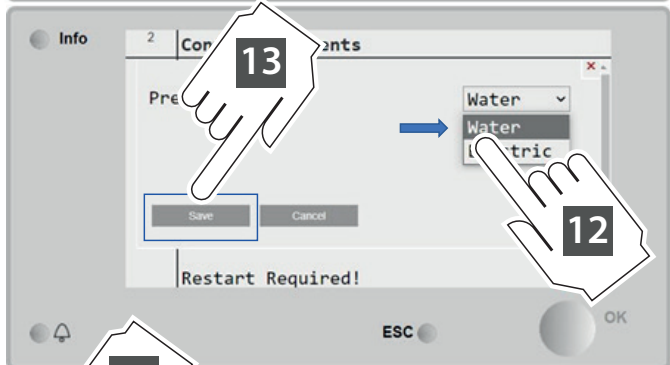
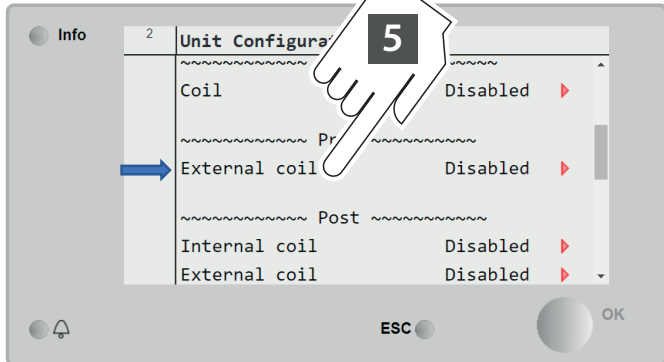
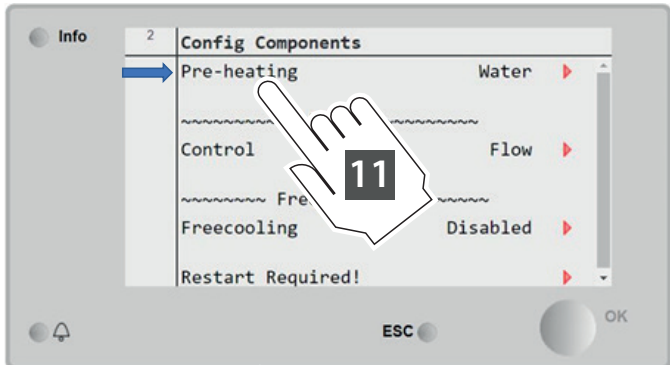
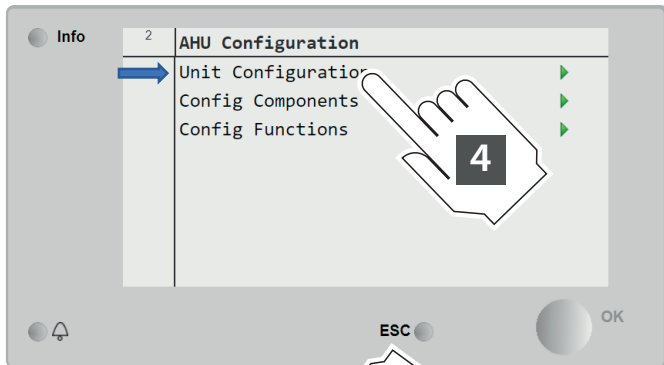
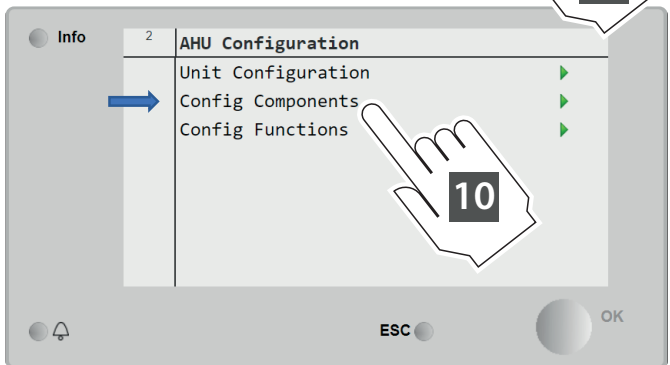
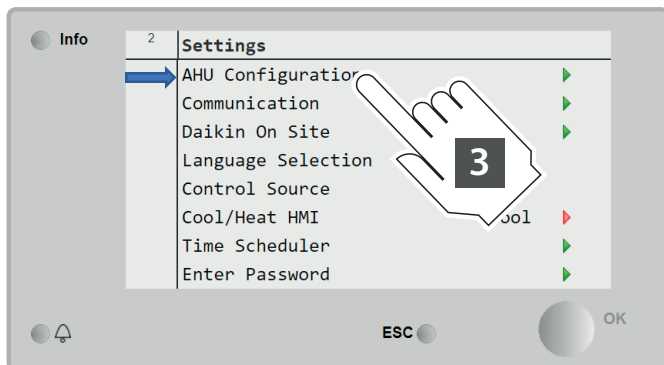
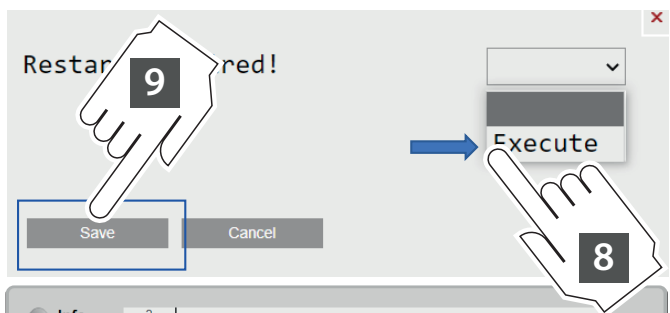
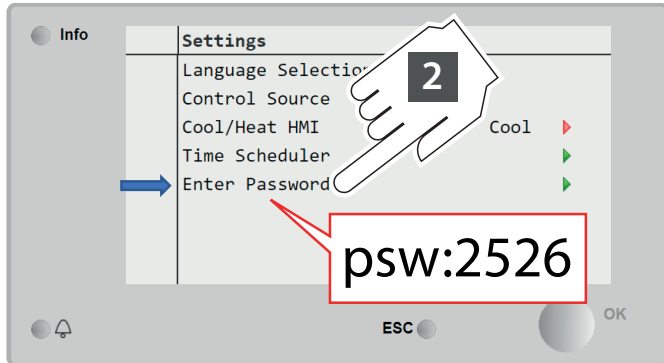
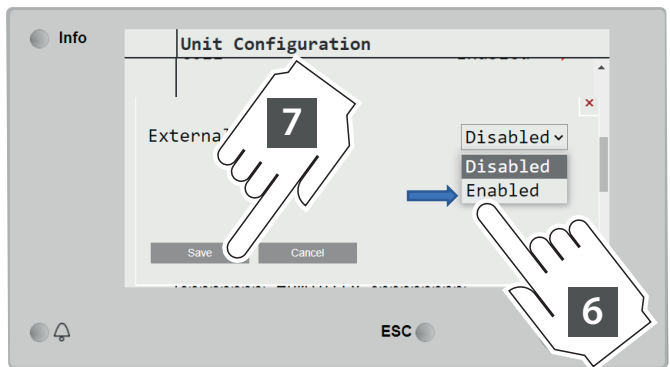
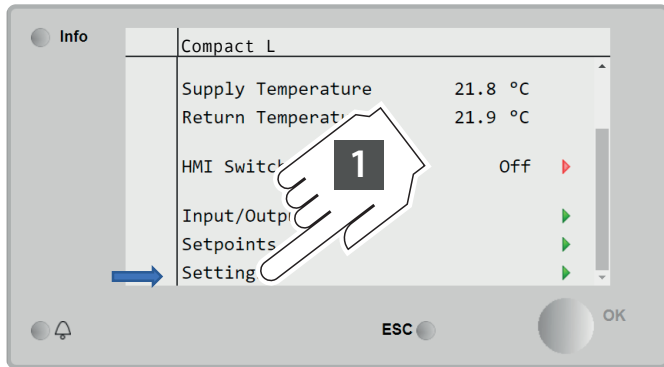
## 6 Temperature probe installation



## 7 Installation of Droplet eliminator

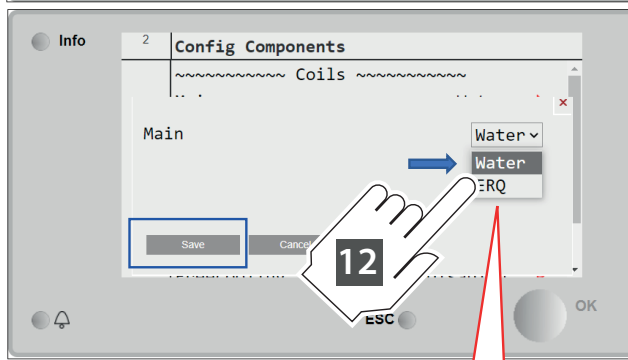
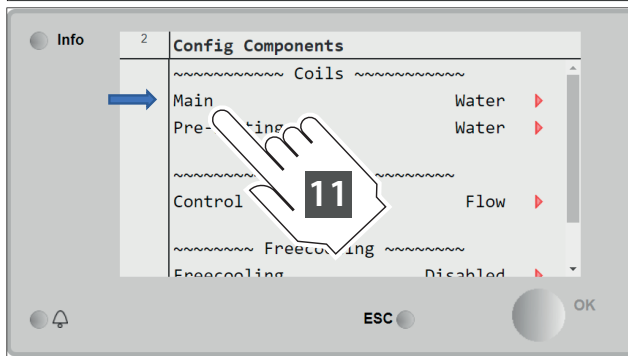
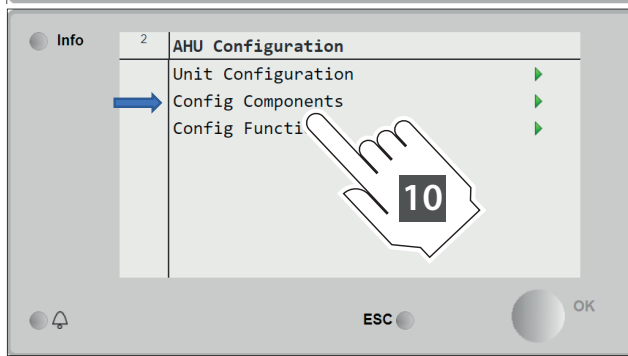
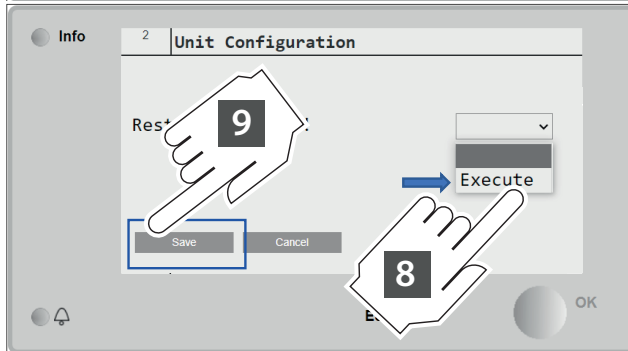
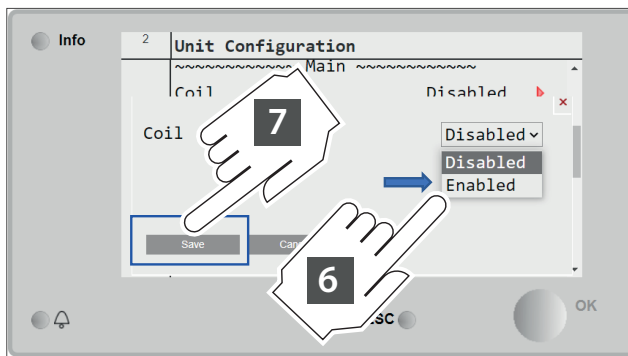
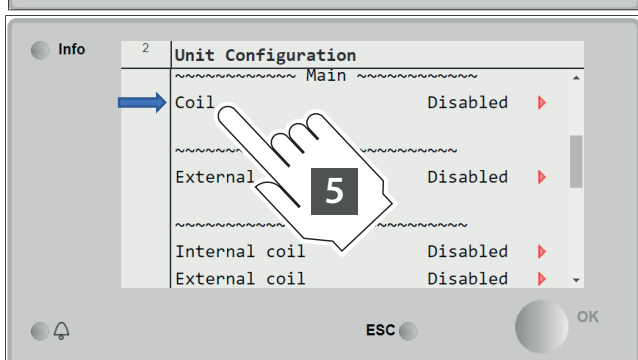
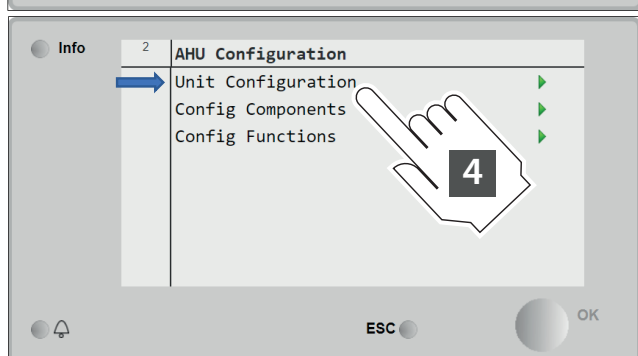
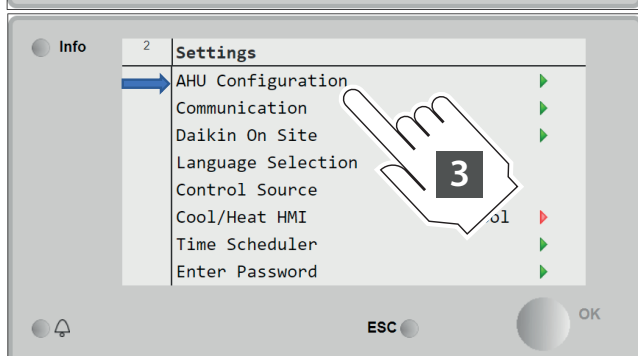
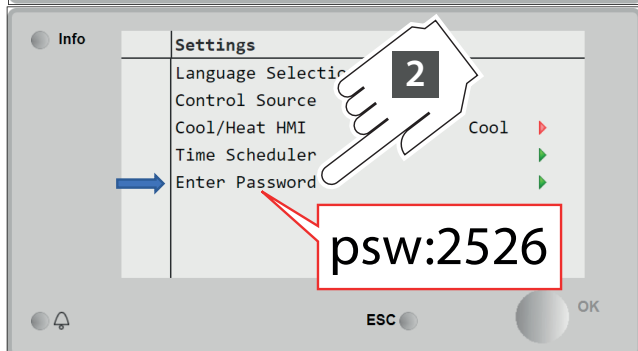
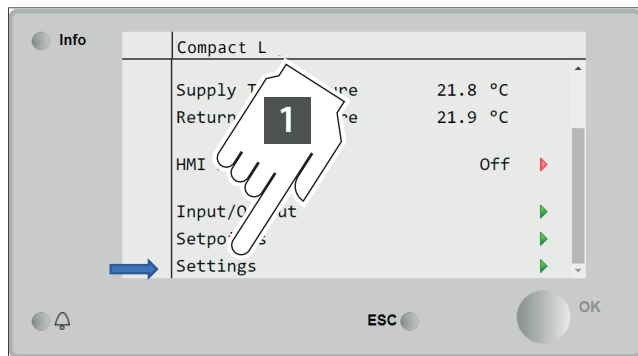
# Software setup (PRE HEATING)

Commissioning module ALC00895A is required

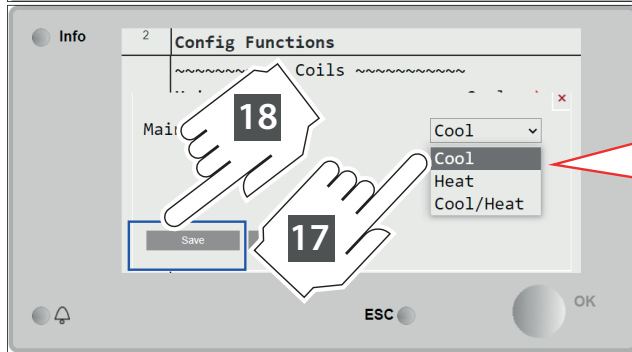
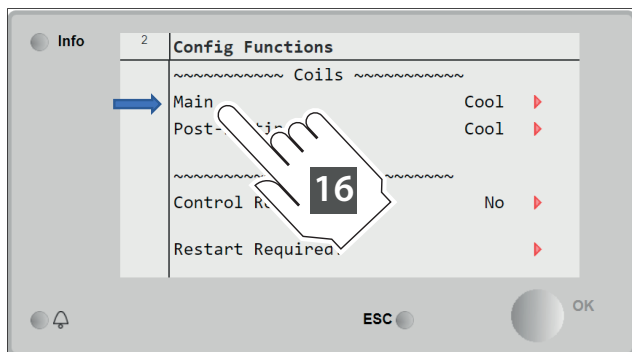
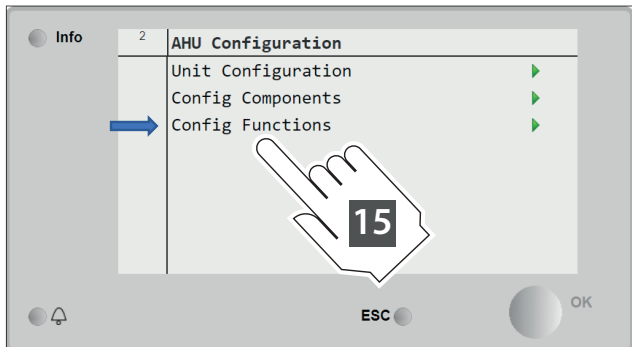
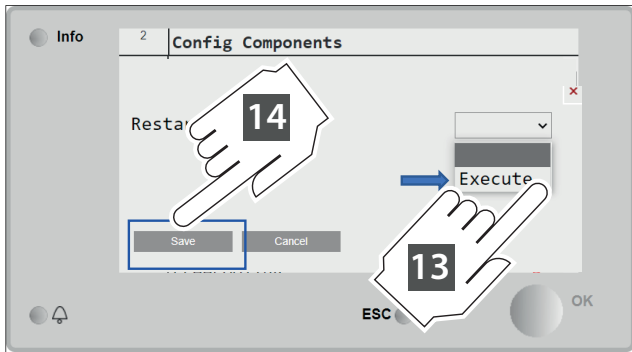


# Software setup (COOLING/DX)

Commissioning module ALC00895A is required

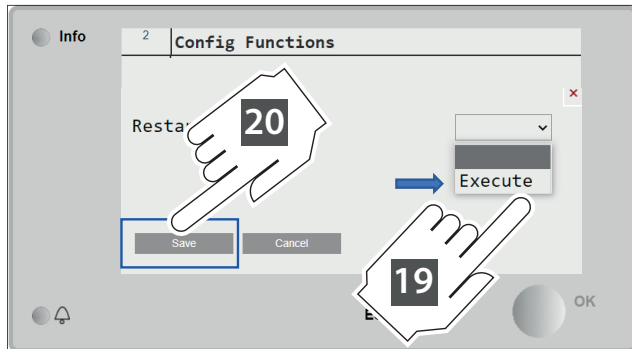


**WATER -> Cooling coil water**  
**EKEXV -> DX Cooling coil**



Select whether the coil is  
will work as:

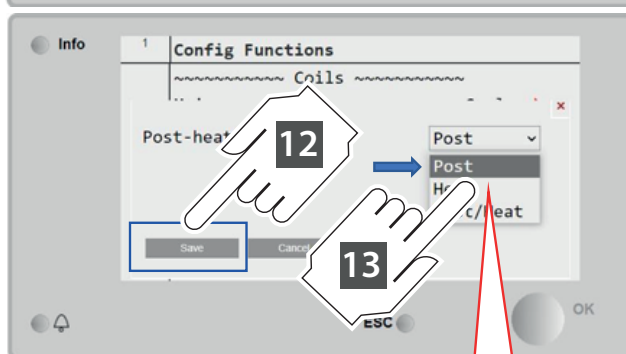
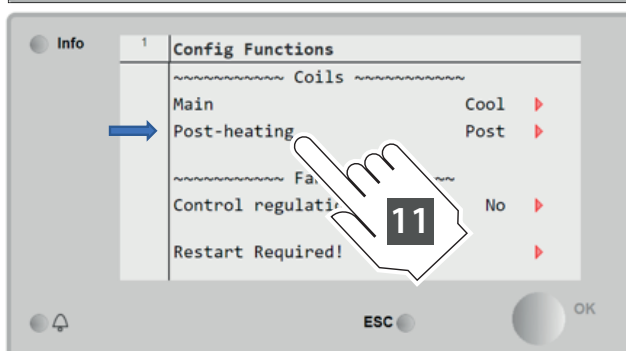
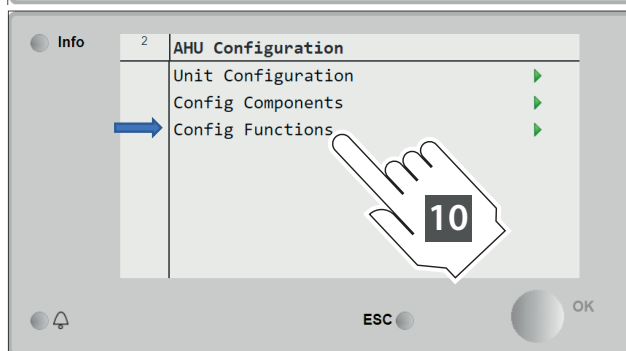
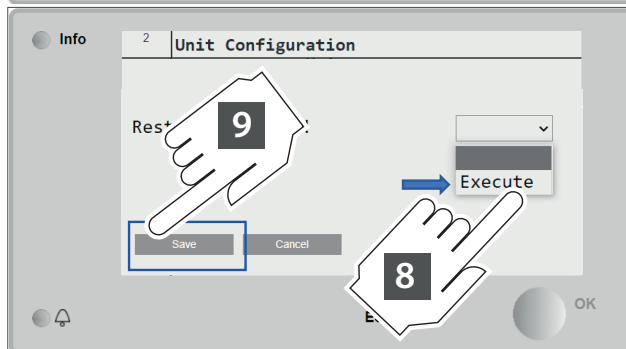
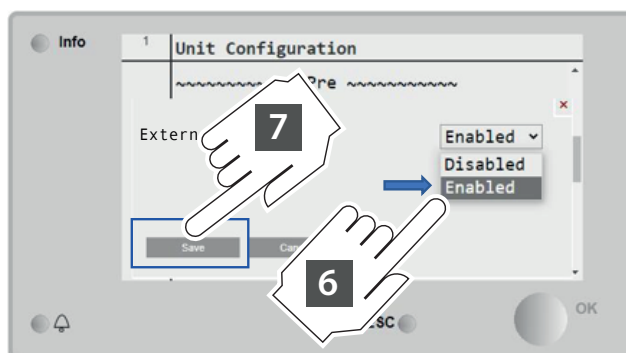
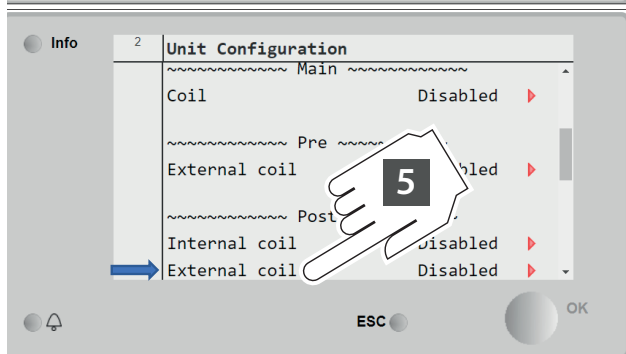
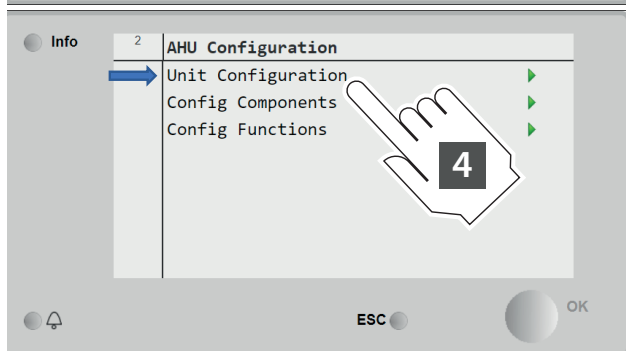
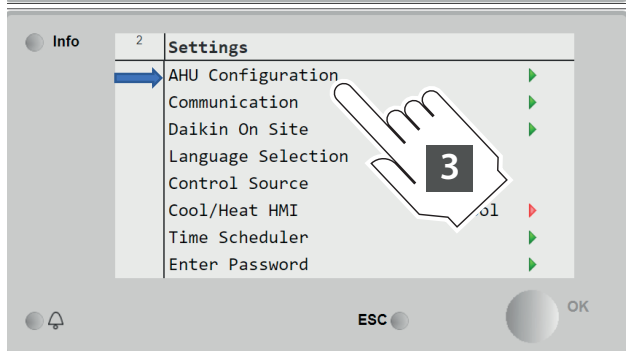
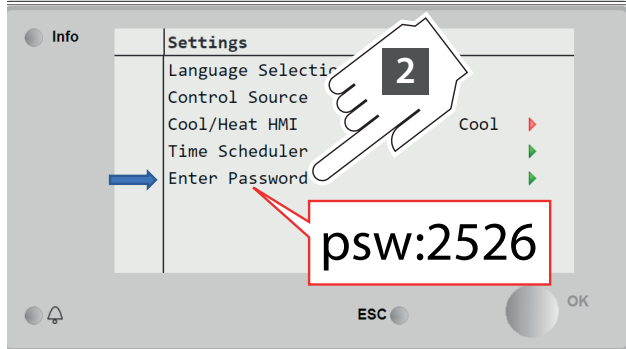
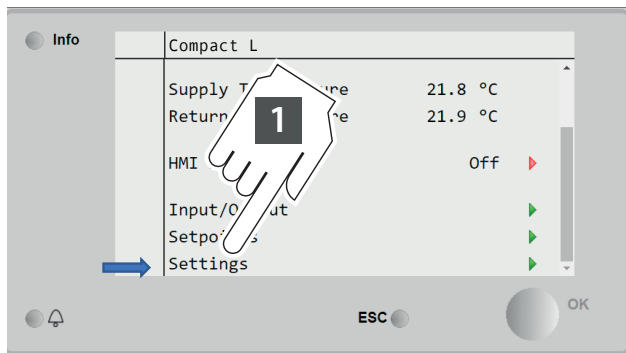
- cooling
- heating
- mixing (cooling/heating)





# Software setup (POST HEATING)

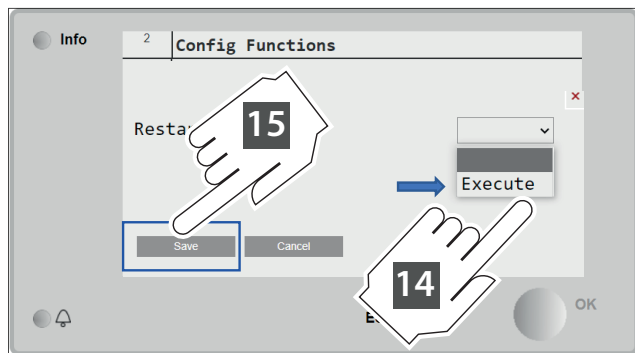
Commissioning module ALC00895A is required



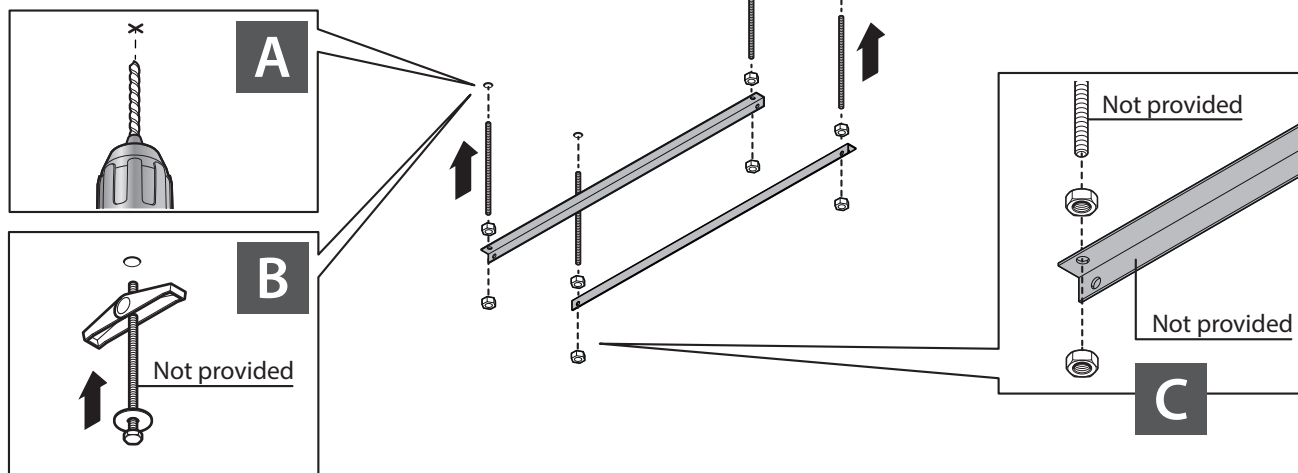
Select whether the coil will work as:

- **Post:** works in dehumidifying mode together with cooling coil
- **Heat:** works only in heating mode
- **Post/Heat:** works in both ways



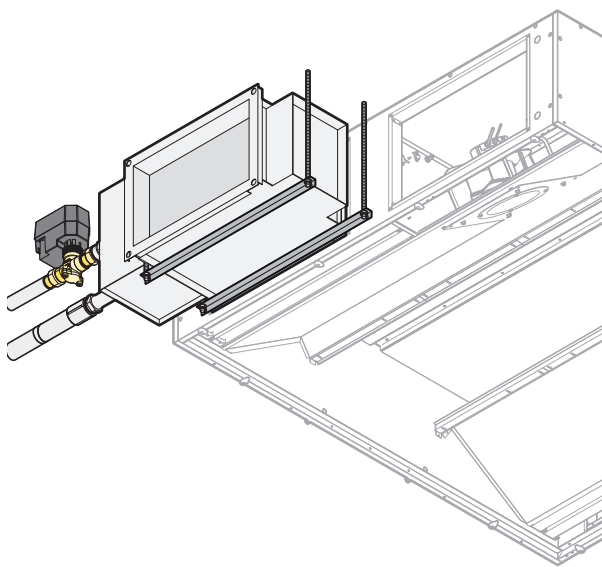


## SUGGESTION

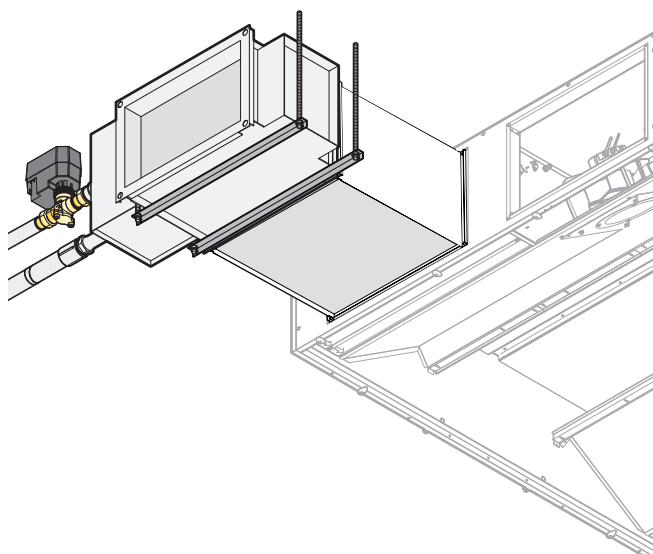


## SUGGESTION

Fresh Air side



Supply Air side



Electrical Wiring as per wiring diagram

**DAIKIN APPLIED EUROPE S.p.A.** Via Piani S. Maria, 72 - 00072 Ariccia (Rome) Italy - [www.daikinapplied.eu](http://www.daikinapplied.eu)

La presente pubblicazione è redatta solo come supporto tecnico e non costituisce impegno vincolante per Daikin Applied Europe S.p.A. Daikin Applied Europe S.p.A. ne ha compilato il contenuto al meglio delle proprie conoscenze. Nessuna esplicita o implicita garanzia è data per la completezza, precisione, affidabilità del suo contenuto. Tutti i dati e le specifiche in essa riportati sono soggetti a modifiche senza preavviso. Fanno fede i dati comunicati al momento dell'ordine. Daikin Applied Europe S.p.A. respinge esplicitamente qualsiasi responsabilità per qualsiasi danno diretto o indiretto, nel senso più ampio del termine, derivanti o connessi con l'uso e / o l'interpretazione di questa pubblicazione. Tutto il contenuto è protetto da copyright di Daikin Applied Europe S.p.A.

D-EIMAH0003306-24\_00EN