

Installation manual

Flexible Joint

Compact L

D-EIMOC0020-31_00EN

Model	Material name	Page reference
Compact L	ALA02FXB	page 2
	ALA03FXB	
	ALA05FXB	
	ALA07FXB	

1 Safety regulations



The pictogram shows a situation of immediate danger or a dangerous situation that might cause injuries or death.



The pictogram shows that it is necessary to adopt suitable behaviour in order to avoid jeopardising staff safety and cause damages to the equipment.



The pictogram shows particularly important technical information that should be taken into consideration by the people installing or using the equipment.

User safety regulations



Before using or maintaining the equipment, read this manual carefully and carefully store it for any further future consultation by the various operators.

Use and cleaning other than those indicated and foreseen in this booklet are considered improper and can cause damages, injuries or fatal accidents, void the warranty and hold the manufacturer harmless from any liability.

Scheduled and extraordinary maintenance must be carried out **only by qualified staff, authorized by the Retailer or Manufacturer.**

The apparatus can be used by children older than 8 and people with reduced physical, sensory or mental capabilities or without the necessary knowledge or experience as long as they are supervised or instructed about the safe use of the equipment and its inherent dangers. Children should not play with the equipment. Cleaning and maintenance to be performed by the user should not be performed by unsupervised children.

Children must be supervised to make sure they do not play with the apparatus.



This apparatus recovers the outgoing air heat "at internal temperature" and passes it on to the incoming air, cooling or heating it; any other use does not comply with the intended use and is therefore dangerous.

If the equipment does not work or functional or structural alterations are noted, disconnect it from the mains and contact a service centre authorised by the Manufacturer or Retailer, without attempting to repair it on your own. For any repair, ask for original spare parts.



Failure to follow these instructions could cause damages and injuries, even fatal, and voids the warranty.

To ensure that the device is in perfect use and safety conditions, we recommend you have it maintained and serviced by a service centre authorized by the Manufacturer or Retailer at least once a year.



Read this manual carefully before device installation and maintenance and keep it for any further future consultation by the various operators.



All installation, assembly, electrical connections to the mains and extraordinary maintenance

Installer and maintenance technician safety regulations



Installers must perform operations on the basis of their professional qualifications: all activities not within one's experience (i.e. electrical connections) must be carried out by specialized and qualified staff so as not to endanger one's safety and the safety of the other operators interacting with the equipment.



Transport and equipment handling operator: authorized person with recognized experience in using transport and lifting equipment.



Technical installer: expert technician, sent or authorized by the manufacturer or its representative, with adequate skills and training to install the equipment.

Assistant: technician subject to care obligations while lifting and assembling the equipment. He must be suitably trained and informed about the operations to perform and the safety plans of the site/installation location.

In this booklet, the technician competent to carry out the operation is specified for all of them.

must be performed **only by qualified personnel authorized by the Retailer or Manufacturer**, in compliance with the regulations in force in the Country the equipment is to be used and the standards on the systems and safety in the workplace.

Unauthorized actions, tampering or modifications that do not follow the information provided in this manual can cause damages, injuries or fatal accidents and void the warranty.



Remember that an installation, electrical connection or maintenance other than those indicated in this manual can cause damages, injuries and even fatal accidents.

If, after receiving and unpacking the equipment, you notice structural alterations or visible damages, do not proceed with the installation but immediately contact the Manufacturer or Retailer.

Packaging material, since potentially hazardous, must be kept out of the reach of children or animals and correctly disposed according to local regulations.



Use protective clothing and suitable equipment while handling or installing the equipment, in order to prevent accidents and safeguard your own and other people's safety.

Individuals not assigned to the installation are NOT allowed to stand or pass through the work area while the equipment is assembled.



Disconnect the equipment from the mains before installing or maintaining it.



Before installing the equipment, check that the systems comply with the legal provisions in force in the country of use and meet the specifications on the serial number plate.

The equipment must always be connected to the system or earthing terminal; moreover, once the electrical connections are completed, check the terminals are tightened, close the connection box and start the machine.

Once the machine is started, check that:

- the sense of rotation is correct and matches the one stated on the fan auger
- electrical consumption is as stated on the plate;
- there are no excessive vibrations that might affect the equipment stability.

If the equipment is connected via a controller, make sure this is suitable to the piloted apparatus.



Ensure the air intake is not located near any exhausts, flue-gases or other.



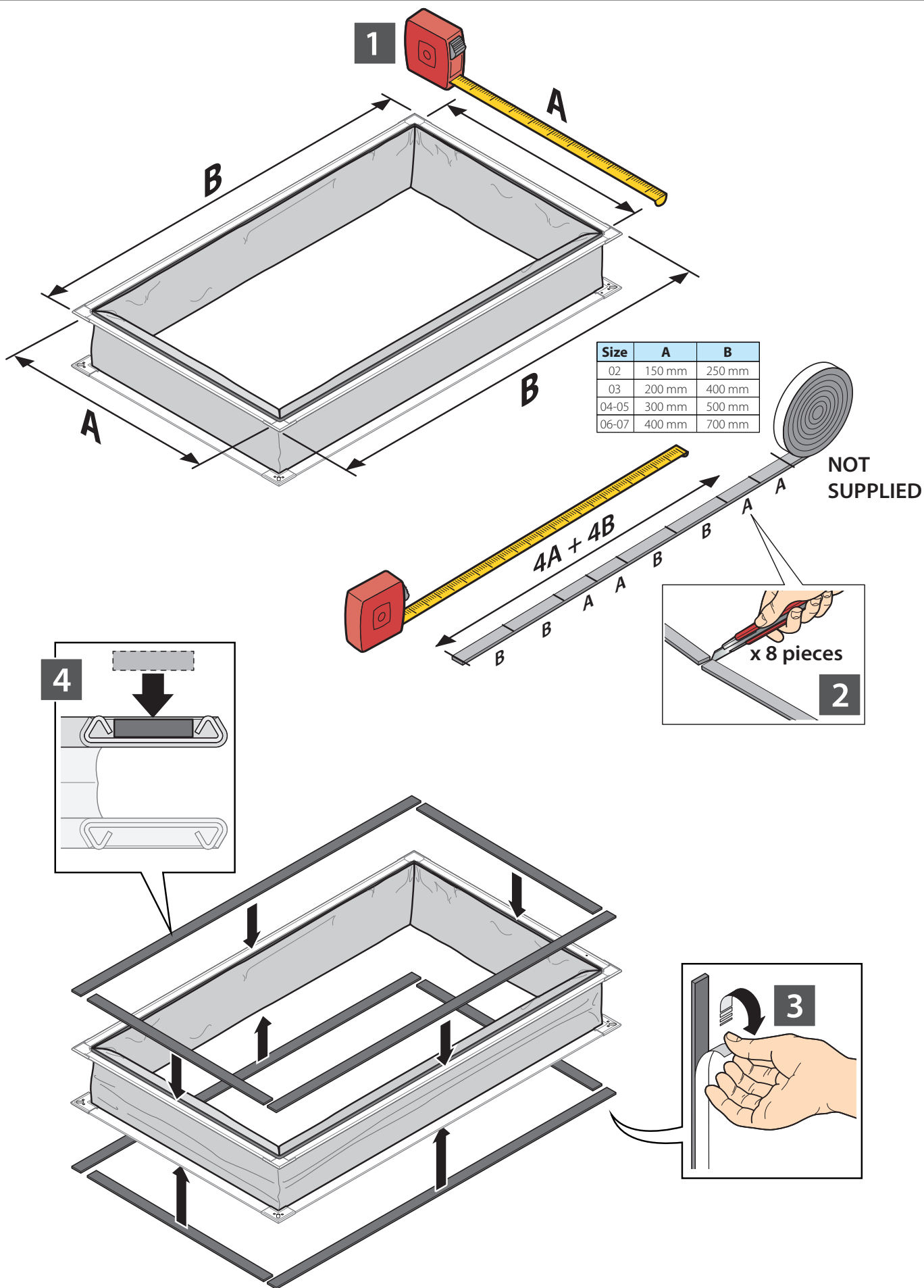
Do not install the equipment in places exposed to strong winds, salt air, naked flames or temperatures exceeding 40°C (104°F).



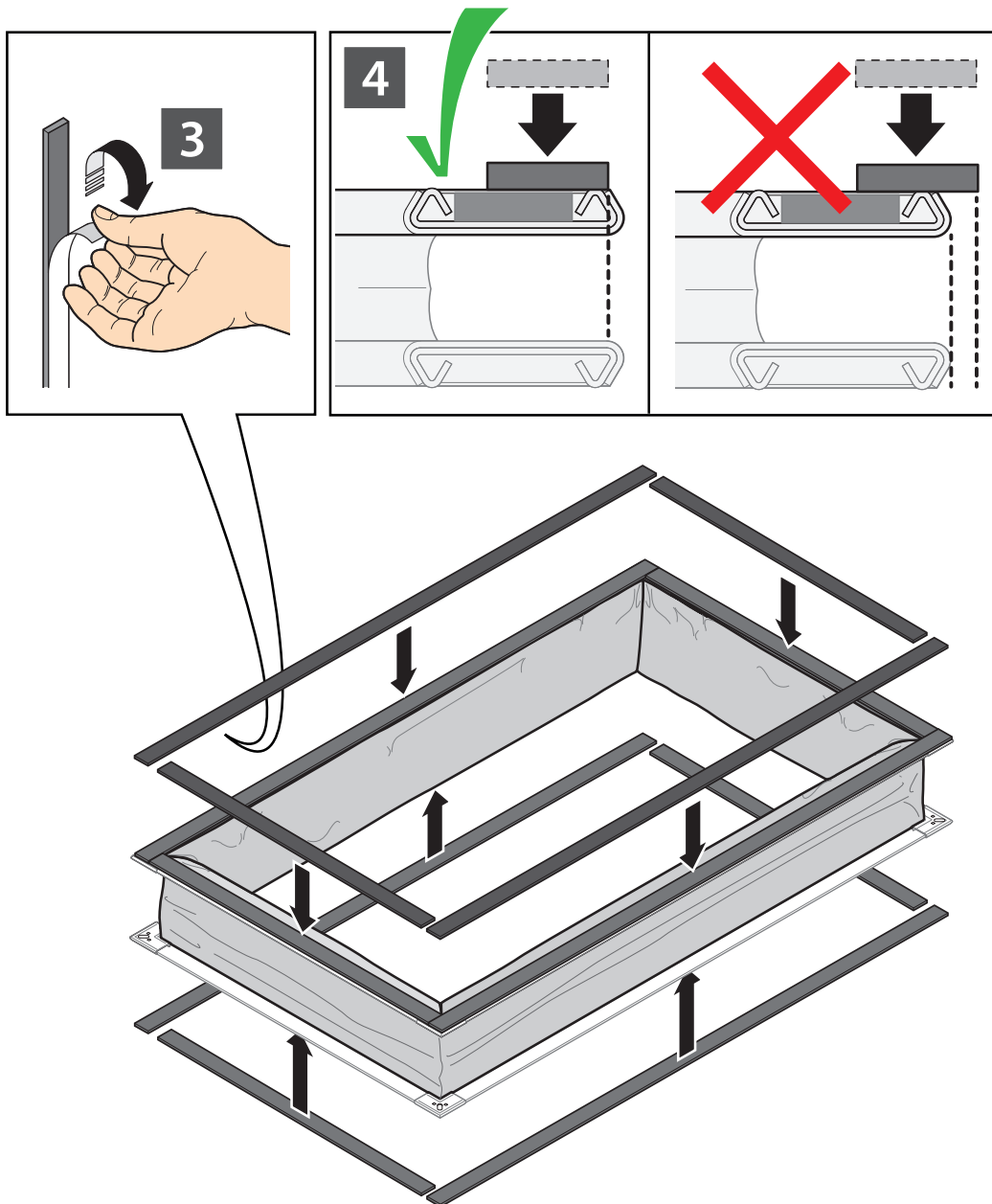
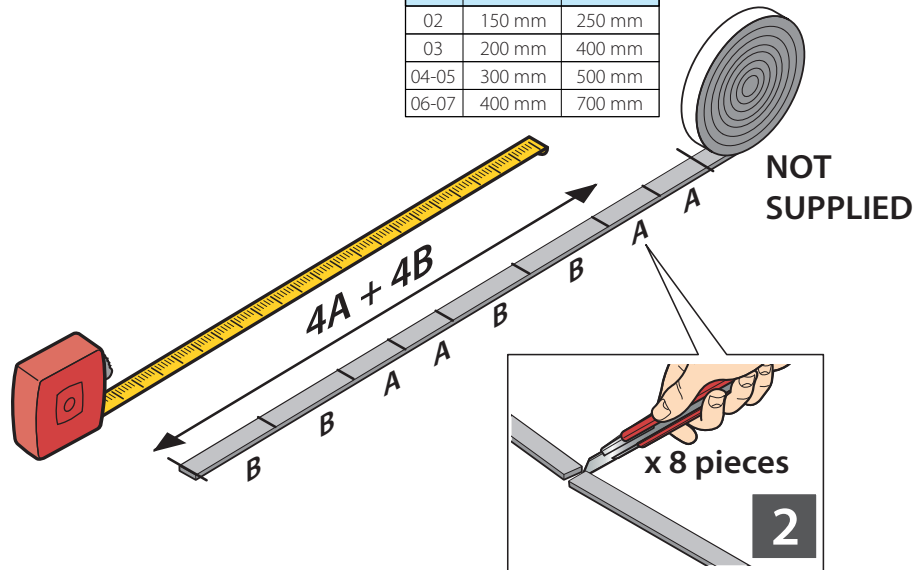
Scheduled and extraordinary maintenance must be carried out **only by qualified staff, authorized by the Retailer or Manufacturer**, after disconnecting the apparatus from the mains and using personal protection equipment (i.e. gloves, goggles, etc.).

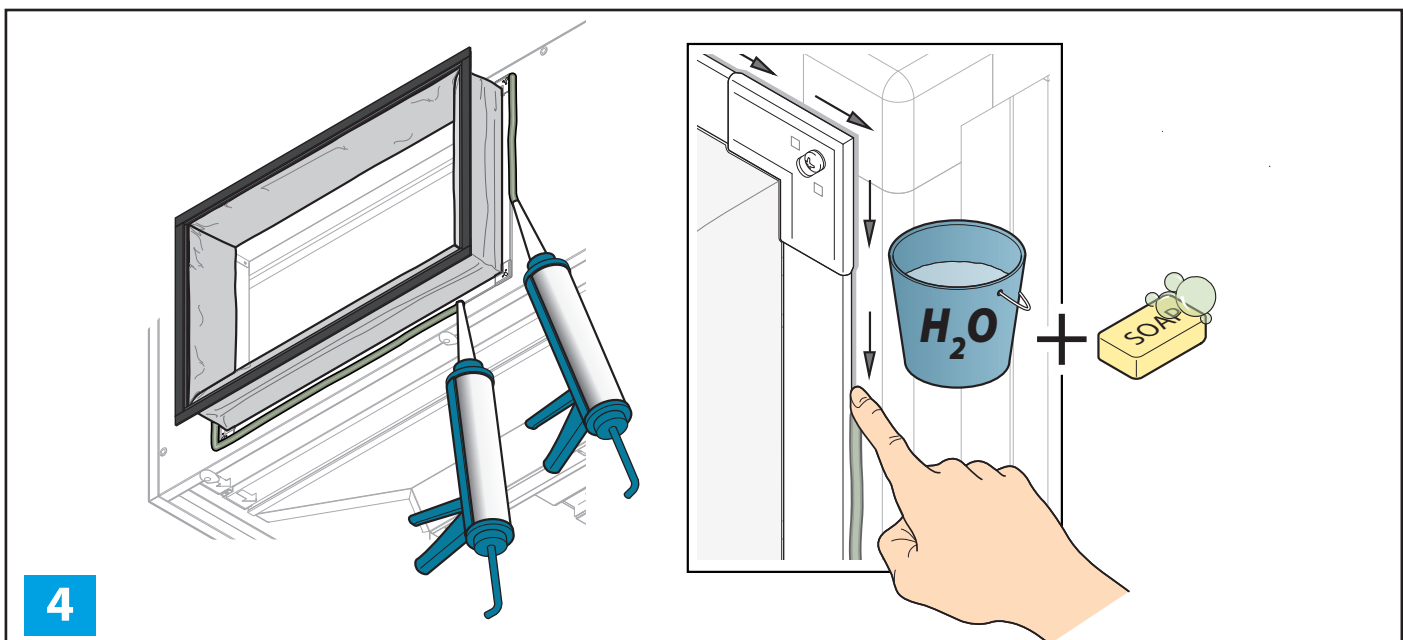
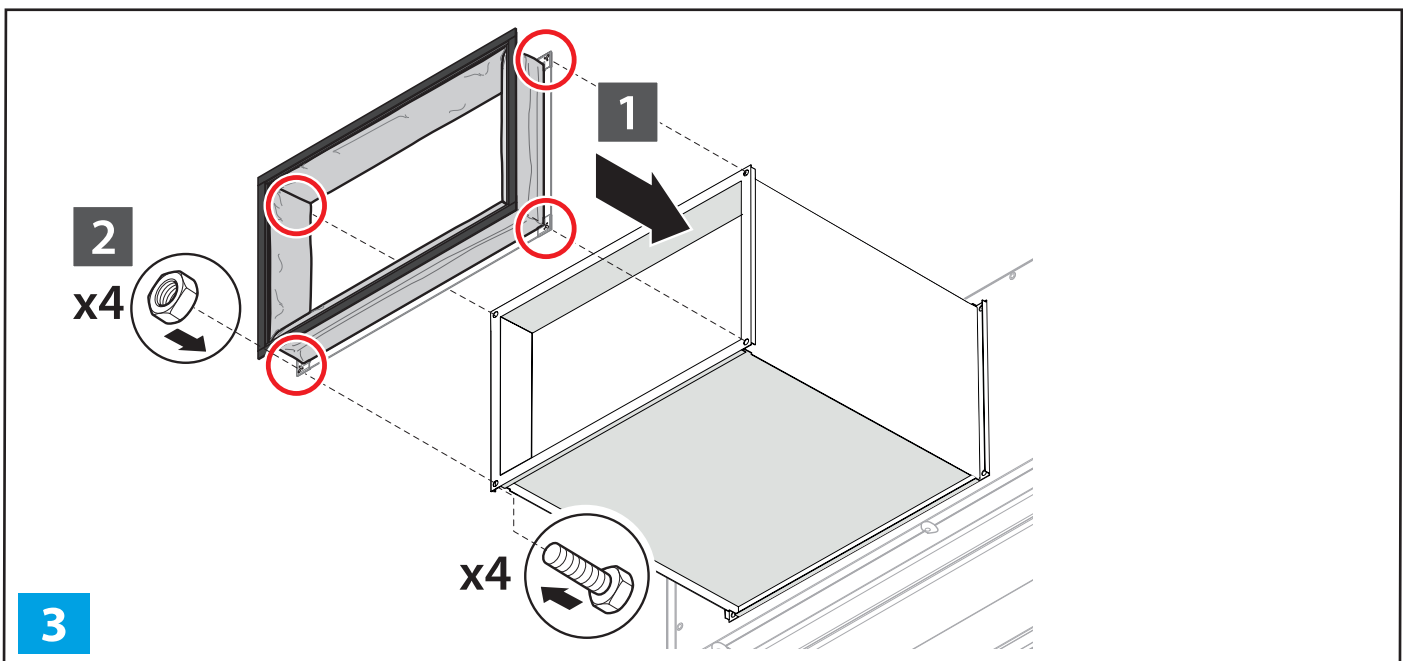
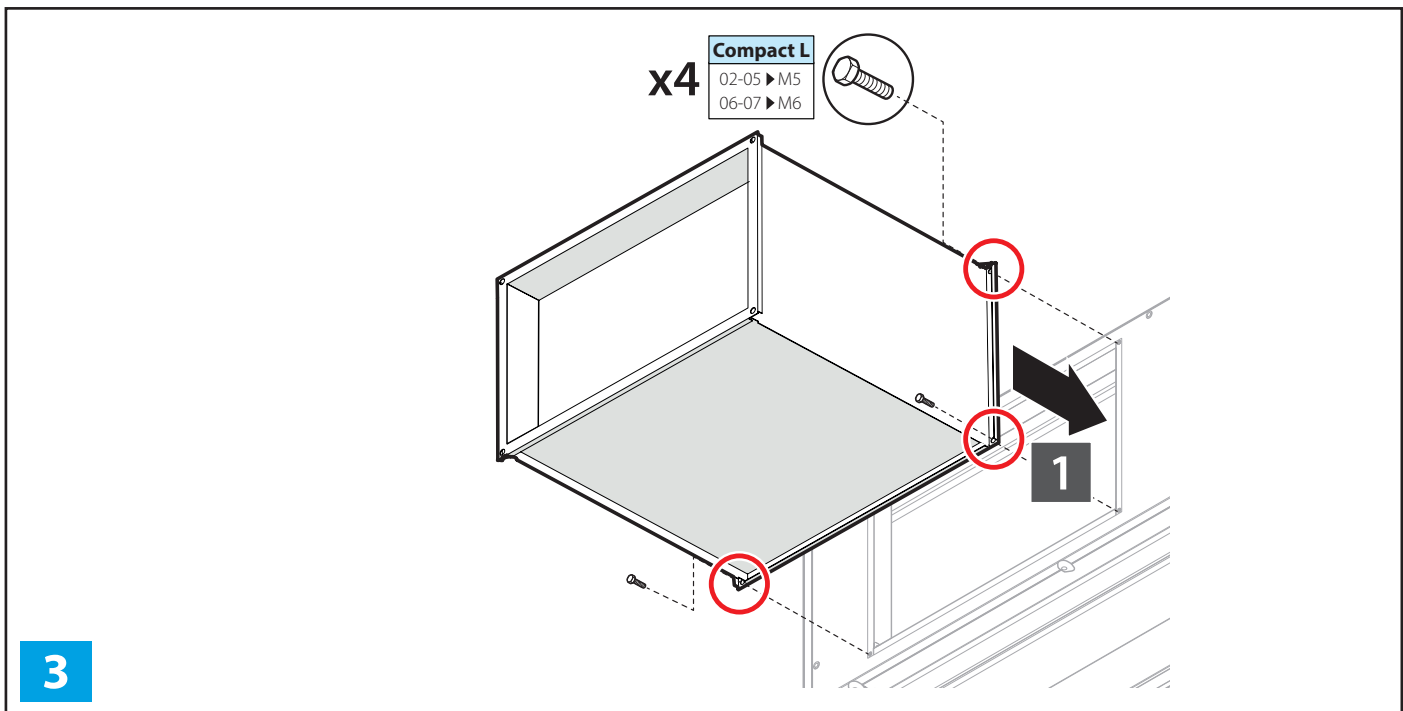
The specification plate provides important technical information: it is essential in case of device maintenance or repairs: we recommend you do not remove, damage or modify it.

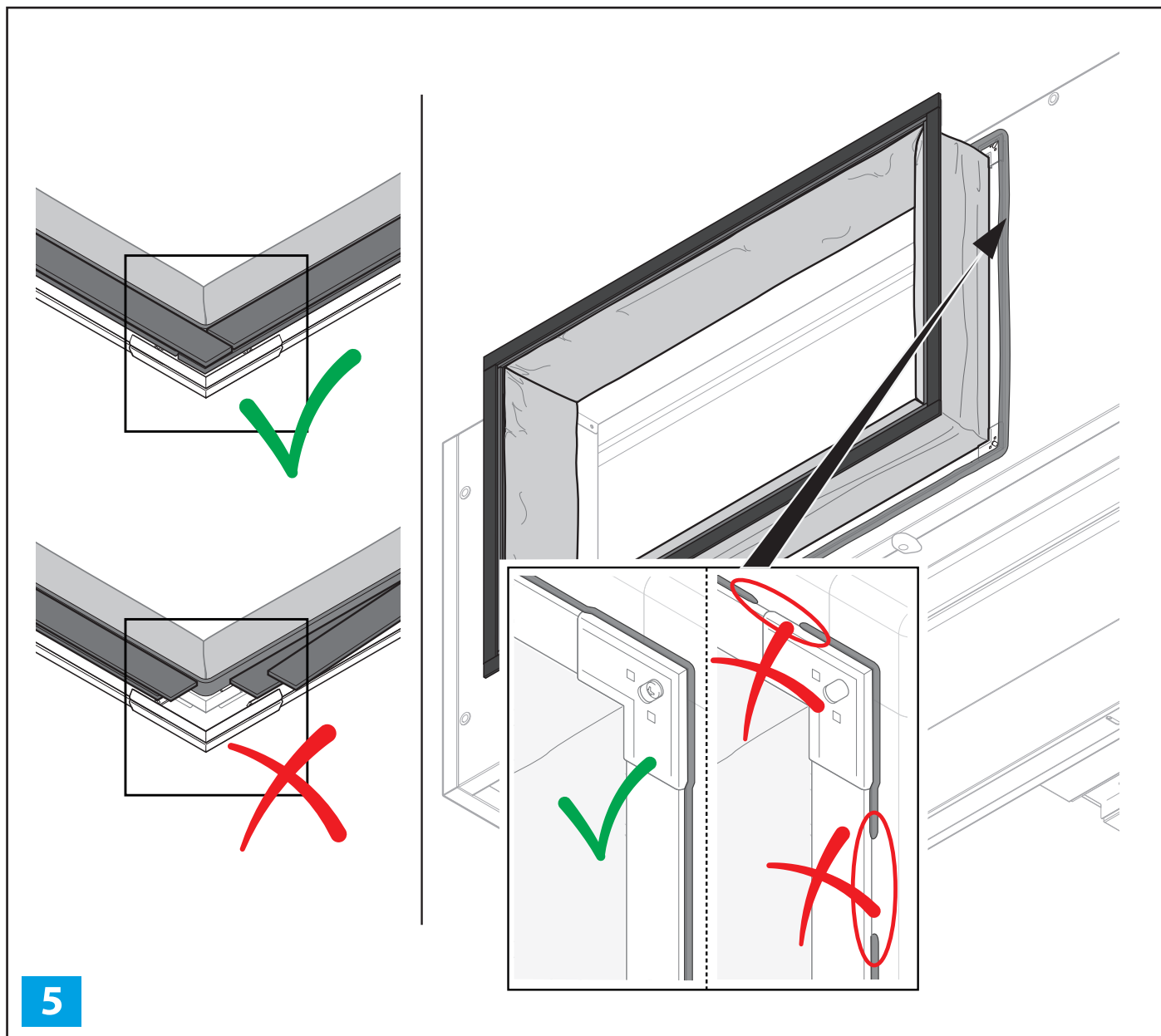
Failure to follow these instructions may cause damages and injuries, even fatal, voids the warranty and holds the manufacturer harmless from any liability.



Size	A	B
02	150 mm	250 mm
03	200 mm	400 mm
04-05	300 mm	500 mm
06-07	400 mm	700 mm







5

DAIKIN APPLIED EUROPE S.p.A. Via Piani S. Maria, 72 - 00072 Ariccia (Roma) Italy - www.daikinapplied.eu

This publication is drawn up only as technical support and does not constitute a binding commitment for Daikin Applied Europe S.p.A. Daikin Applied Europe S.p.A. has drawn up the content to the best of its ability. No explicit or implicit guarantee is given as to the completeness, precision or reliability of its content. All the data and specifications contained herein is subject to change without notice. The data stated at the time of the order takes precedence. Daikin Applied Europe S.p.A. accepts no liability whatsoever for any direct or indirect damage, in the broader sense of the word, deriving from or connected with the use and/or interpretation of this publication.

All the content is protected by Daikin Applied Europe S.p.A.'s copyright.

D-EIMOC0020-31_00EN